

PARADISE COAST

Whangamatā NEWS

ISSUE 129 - 8 NOVEMBER, 2024

FREE COPY

PLEASE TAKE ONE!



BREAKING NEWS

The mighty All Black 7s are coming to Whanga

PAGE 11



Hikuai School Food for Thought, P9



Once Upon a Time dance show, P14



GT Show & Shine, P18



FOLLOW US

BY LOCALS, FOR LOCALS, ABOUT LOCALS.

WE WELCOME YOUR CONTRIBUTIONS!

EMAIL WHANGAMATANEWS@GMAIL.COM • FACEBOOK [@WHANGANNEWS](https://www.facebook.com/WHANGANNEWS)

Taken home by bach owners and visitors to everywhere

SEE ALL OUR EDITIONS LIVE AT WWW.WHANGAMATANEWS.NZ

EDITORIAL & MEDIA SALES:

JENNIE BLACK - 021 0232 1661

DELIVERED TO WAIHI, WHIRITOA, WHANGAMATĀ, ONEMANA, HIKUAI, PAUANUI & TAIRUA

Get 2 Go students qualify

A group of Whangamata Area School students have qualified to represent the Waikato Region at the National Get 2 Go Adventure Sport finals in 2024.

The group of year 9 and 10 students took out the regional competition in Cambridge in term three and have now earned the right to compete at the National Finals at the Edmund Hillary Outdoors Centre in Tongariro in early December. The team, consisting of Felix Lloyd, Ryan Ellery, Mac Hamilton, Beau Rogers, Ella-Rose Luke, Ivy Joyce, Aiyana Webb, and Vivi Meyer defeated schools from as far afield as Taupo in the regional event. The challenge is a combination of kayaking, mountain biking and orienteering with further activities to be added at the national finals.

This is the first time WAS has ever had a team qualify for the national finals and team coach Ryan Thompson was proud of their efforts at the regionals. "The team worked well together and we are fortunate to have individual team members with high levels of

skill and experience in each of the disciplines. The key, however, is the team working together and this was necessary on the orienteering leg which really sealed the regional title."

The team are now training and fundraising hard for the national final for which they are needing to raise around \$10,000. Several local organisations, most prominently Blue Light have already given significant support and the team have been out and about at school events doing burger sales and other fundraisers. As part of the final push, there is an event specific donations page that anyone can contribute to.

These students are great ambassadors for our school and town and this is a great opportunity for them.

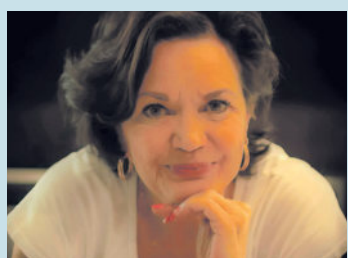
Any donations will be gratefully received and can be made via this web address: connect.vega.works/content/csharp/DonateFormAll.aspx?rfd3x0k=12CAB409-F3B3-4EDE-AOEE-715A4F310822&xInse5=5555



Welcome to the first November 2024 edition of Whangamatā News

– a magazine By Locals, For Locals, About Locals

Whangamatā News www.WhangamataNews.nz	
<p>EDITOR & SALES DIRECTOR Jennie Black Phone 021 0232 1661 WhangamataNews@gmail.com</p> <p>SPORTS REPORTER & PHOTOGRAPHER Mark James Phone 021 668 469</p> <p>ART DIRECTOR Anna Gledhill WhangamataNewsArt@gmail.com</p>	<p>PUBLISHING Printed by Beacon Media Group. Published by Whangamatā News 2021 Ltd</p> <p>All content featured in Whangamatā NEWS Limited is subject to copyright in its entirety and may not be reproduced in any form without permission from the Publisher. Any material supplied for publication is at the submitter's risk. All information is believed to be true by the Publisher at the time of printing. Views expressed in Whangamatā NEWS Limited are not necessarily those of the Publisher.</p>



For advertising queries contact Jennie Black
 Editorial/Sales Director
 Phone 021 0232 1661
jennieablack@gmail.com

We welcome your letters, articles, photos, news tips and advertising enquiries

- We ask that letters and articles be no more than 250 words, although exceptions can be made.
- Photos should be high resolution and in focus.
- Include your name, no noms de plumes.

For editorial or photographic matters, phone Jennie on 021 0232 1661 or email WhangamataNews@gmail.com

HON SCOTT SIMPSON

MP for Coromandel

Recognising outstanding academic achievement

Across the Coromandel electorate, the school year is winding down which means it's also the school prize giving season. This is the time of year when the community comes together to celebrate the academic success of our local students.

In recent weeks I've had the pleasure to attend the senior academic prize givings at Thames High School and Waihi College. They were terrific evenings which recognised the hard work put in by so many young New Zealanders.

Huge congratulations to every student who received an award

and best of luck for your exams. I have no doubt that you are prepared for any challenge that comes your way.

If anyone in the community is ever feeling despondent about the future of young people or the future of the country, go to a school prize giving. You'll come away enormously uplifted because there are bright, young, intelligent, articulate, capable, confident kids about to make their way in the world.

– Authorised by Scott Simpson MP, 614 Pollen St, Thames

Scott Simpson

MP for Coromandel

Contact me anytime
 0800 550 330 • scottsimpson.co.nz
mpcoromandel@parliament.govt.nz
[scottsimpsonmp](https://www.facebook.com/scottsimpsonmp)

Authorised by Scott Simpson, Parliament Buildings, Wellington.

For your design needs

- Adverts
- Signs
- Posters
- Flyers

- Magazines
- Business cards
- Gift vouchers

and more...

Contact Anna Gledhill
aljgledhill@gmail.com or 021 653 148

Designer for Whangamatā News & the Repco Beach Hop 24 programme



Climate Facts and Fears

Once again John Lipscombe leaves us with no doubt about his views on climate change. While boldly stating that “the facts are clear” he also describes how scientific theory is formed. Theory is not the same as proven fact and is often subject to challenge and peer review.

I suspect John is old enough to recall that in the early 1980’s “scientific modelling” predicted a catastrophic 3 metres of sea level rise by 2010. This theory did little to advance the credibility of scientific modelling. However, predictions and theory continue to be advanced today that calamity awaits our future generations.

Statements such as “climate change is a massive threat” or “our children will have to deal with horrific consequences” form the basis of another issue. A recent study has indicated that our kids are suffering increasingly from anxiety. Further, around 50% stated that climate change was the main cause of their torment.

Perhaps it is time for us to temper inflammatory language around climate change.

George Williams
WHANGAMATA

Another angry fisherman

Marine Reserves - High Protection Areas are a disaster for Coromandel fishers. The new High Protection Areas (HPA's) that are about to be signed into law are a disaster for Coromandel residents, holiday homeowners and visiting fishermen. Not only will the HPA's lock up many of our favourite fishing spots but purse seining and bottom trawling will still be allowed within the Hauraki Gulf Marine Park.

I feel we have been seriously let down by Scott Simpson our local constituent MP. Scott Simpson chaired the committee that passed this legislation through the select committee process ready for signing into law. He is very aware of all the issues, yet these decisions were made under his stewardship.

The proposed High Protection Areas have been chosen with no thought for the local community and no local consultation. All our official submissions and personal pleas were ignored. HPA's seem to have been chosen to satisfy a want to increase the total area of the Hauraki Gulf Marine Park in protected status to satisfy some United Nations commitment rather

than what will work to increase abundance overall.

Also, there is little scientific evidence to support closing the High Protection Areas at all. For years, communities have tried to stop commercial netting in our local harbours, only to be told by Scott Simpson that there is no scientific evidence to support such a ban. Yet this legislation allows the closure of these HPA's with no substantive research as to whether there is a problem in the first place. If there is no baseline research for measuring results, what will success look like?

The original Sea Change document identified many reasons for the depletion of the fish stocks and the degradation of the Hauraki Gulf Marine Park. Amongst these was the destructive commercial fishing practices like bottom trawling and purse seining. Despite a mountain of scientific evidence of the destructive nature of these practices, they are still allowed in the new legislation.

Ask yourself why there are no bait fish inshore, work-ups out wide, or seabirds. Not to mention Kina barrens and mushy flesh, poor condition snapper. But wait,

there's more... As a last minute slap in the face for recreational fishers, commercial fishing will be allowed within some of the HPAs - unbelievable! This is not a Tui ad. Scott Simpson should front to his constituents and explain how these decisions were reached. Scott, the doors of our fishing clubs are open...

Scott Lee
TAIRUA

We welcome your letters

- We ask that letters be no more than 250 words, although exceptions can be made.
- Include your name and where you're from - no noms de plumes.

Email your letter to whangamataneews@gmail.com

For editorial or photographic matters, phone Jennie on 021 0232 1661 or email whangamataneews@gmail.com

BUSINESS FOR SALE
“Time for a new chapter for Cindi”
After 26 years, Sorenson's Hair is selling, and Cindi is moving to Auckland to be with family. The centrally located salon is fully equipped with 4 chairs, 2 basins and very chic decor. Reasonably priced.
Don't wait ... contact to view! Cindi 0274 583 296 or 07 865 8117

Sorenson's
FOR HAIR & BEAUTY

709 PORT ROAD,
WHANGAMATA
PHONE 07 865 8117

IMPORTANT COMMUNITY ANNOUNCEMENT

The Whangamatā NZ Post Shop is moving.

When: Thursday November 14
To: 101 Casement Road (opposite Whanga Sports Bar)
New Hours: 9am to 4pm Monday to Friday.

We look forward to welcoming you into our new space.

**Why be fearful of Friday 13th?
We've got it covered...**

BOLD NOT BLACK
Shopping Promotion

Support our local businesses in Whangamatā between **Friday, 15 November** and **Friday, 13 December, 2024** and you could **win cash!**

Simple as – each time you shop, scan the QR code and go into the draw.

WIN

1st Prize: **\$500**
2nd Prize: **\$250**
3rd Prize: **\$150**

*The small print...
proof of purchase will be required to collect the prizes.*

RSA Spooky disco a delight of horror

What an epic night for the huge turnout of families, creeps, skeletons and spooks at our Whangamatā RSA on Halloween last week. A fabulous photo booth enabled pics of the children and all available on Facebook too. Check it out ghosties.

Well done to our RSA, you made it a night to remember!

- Jennie Black, photos by Mark James



NEW CO-LOCATED STORE NOW OPEN!

Come visit us at our co-located Carpet Court & CurtainStudio store

217 Pollen Street, Thames | 07 777 4994

Open Mon - Fri 8:30am - 5:00pm, Sat 8:30am - 2:00pm

Carpet | Vinyl | Wood | Rugs | Curtains | Blinds | Tracks | Accessories

* Offers are valid until 31/10/24. Terms and conditions apply. See instore or online for full details.

STOREWIDE SALE

50% OFF

Making & Lining on All Studio Custom Lined Curtains*

50% OFF

All Studio Custom Blinds*

Massive Madness flooring SALE

10% to **50% OFF** Selected Flooring*

35% OFF Rhino Hardfloor*

CurtainStudio

 **carpetcourt**

Snarlers snag banger prize

Whangamatā News is absolutely delighted to tell our faithful readers of the fantastic success of our local butcher team of Meat at the Beach, entrants in the 2024 Dunningham Sausage Competition, just held at the Viaduct in Auckland.

Over 800 bangers, snags, snarlers, meatballs and patties from 108 businesses competed across 16 categories - 13 for sausages and three mince sections, from the bottom of the South Island to the top of the North Island. Co-owner Janene told us that Meat at the Beach entered four categories, Beef, Pork, Flavoured Beef and the Black Pudding category.

Judging was a two-stage process. The first took eight days, with a 34-strong panel assessing composition, taste, texture and appearance. Top-scoring category entries moved on to the next round, where they competed for the Supreme Award.

Meat at the Beach Whangamata took out the Bronze Award for their 100% Pure Beef Sausages and we couldn't be more proud.

Our small team went up against tough competition with Supermarkets, huge butcheries and small butchers like themselves.

Janene said "It was a good exercise to see where we were against NZ, it's the second time we have entered



and the main reason was because of our customers encouragement, who said how awesome our sausages are, we wouldn't be where we are without our customers, they are an amazing support, it was their encouragement that made us do it."

"It's a real team effort as we are teaching other staff how to make the sausages, we have a fabulous team. Steve has been a Butcher for 27 years now, he started young and

always wanted to do the traditional butchering, he doesn't buy-in boxed meat, he makes all his own sausages, breaks down the bodies, the lot. Butchery is a dying trade and that's why he's trying to teach the young ones his skills".

Congratulations team for the recognition of the best snarlers we know!

- Jennie Black



Whangamata Club

Join Us AT THE **WHANGAMATA CLUB**

Top Covers Act

ruff copy

BAND

Rock RnB Country Rock Soul Reggae Blues

Party songs and classics

Come party with us!

9 November 2024
7:00 pm

SATURDAY
9 NOVEMBER

SUNDAY
17 NOVEMBER

SUNDAY
24 NOVEMBER

8:30AM - 10:00 AM

**ALL BLACKS
BREAKFAST**

BUFFET

SCRAMBLED EGGS
BACON
BREAKFAST SAUSAGES
GRILLED TOMATO
BAKED BEANS
HASH BROWNS
TOAST

●●●
\$20

THE WHANGAMATA CLUB
PRESENTS

**GERRI
AND
ARMAND**

SATURDAY 16TH NOVEMBER
6:30 PM

**OPEN
DAILY FROM
11AM**

BISTRO

Monday - Friday from 3pm
Saturday & Sunday from 12pm

DINNER MENU

From 5pm daily

RESTAURANT

Friday to Sunday from 5:30pm

404 PORT ROAD
FACEBOOK.COM/THEWHANGACLUB
WWW.WHANGAMATACLUB.CO.NZ
P. 07 865 8705

Carols in the Park are looking for singers



It is that time of year again when everyone is gearing up for Christmas. This year, Carols in the Park will again be entertaining families singing a range of carols at Onemana on 23 December and Williamson Park on 24 December.

This year, both Sandie Moss and Sandie Snook are working together to direct local singers who would like to participate. There will only be three rehearsals on 24 November,

1 December and 15 December.

We are also looking for fairies and elves to join us on our Santa Parade float on the 13 December. Santa has sent us a letter saying he will be available to join our concerts, but he needs a group of fairies to help him distribute lollies to the children.

He was concerned that last year he was overwhelmed and some little children missed out. We are looking

for anyone who would like to join in and sing in this event or be Santa's helpers (costumes provided). Please text or ring Sandie Moss on 027 472 7772 if interested.

The funds raised from Carol programmes is donated to the local food bank. Last year we raised over \$1000. Please come and join us for this fabulous family event. We are after singers of all ages.



Carols in the Park wants singers

of all age groups to sing Christmas carols at Onemana 23 December & Williamson Park 24 December

First practice at Baptist Church 4pm, Sunday 24 November

Also wanted:

Fairies and elves for the Santa Parade float and to help Santa distribute lollies at Williamson Park in 24 December.

**Contact Sandie Moss
027 472 7772**

Fashion parade perfection

There was a great vibe at the Pauanui Village on Sunday of Labour Weekend with the bi-annual Fashion Parade which has become a truly iconic event in Pauanui, that signals the start to summer. The Fashion Parade was hosted by local retailer Hello Friday, and was again a great success. A wonderful line-up of models - customers, friends and family - made up the team of 8 ladies and 4 men, parading on the

pavement at Pauanui Village and through one of the local eateries, Cabana Kitchen & Bar which was a full house.

The crowd loved the wide age range of the models, and there were many comments of appreciation seeing the new season clothing worn by 'real relatable' people of different ages and life stages. The store represents many well followed

lifestyle clothing brands including BLAK, Coop & Curate by Trelise Cooper, Elm & Foxwood, Humidity, Knewe, Lee Rider, Loobies Story & Madly Sweetly, Minx Shoes, New Zealand made Nes, Skechers, Stella + Gemma, Staple the Label, Superdry, Tuesday Label, Vassalli and Zaket & Plover.

Mandy and Paula of Hello Friday are quick to add that this is a real team

effort to bring the event together, with an army of helpers behind the scenes. If you'd like to see more photo's head over to their facebook page hellofridaypauanui or of course pop into the store, open 7 days, where the wonderful team pride themselves in taking time to help you find some perfect additions to your wardrobe or check out what is new at hellofriday.nz



Whangamata Real Estate Community Pool update

The Whangamata Real Estate Community Pool committee would like to thank the community for their patience.

As the weather warms, the days are longer and town begins to hum, our big refurbishment is almost there. We'd like to thank all members of the community for their patience.

The final coat of blue paint was applied to the pool's interior on October 27th and it looks fabulous. This was not without curve balls, which took some time, and additional coats of paint, to rectify. With a facility of this age, it is unfortunately inevitable that unforeseen issues arise during renovations.

The painting of the black lines on the bottom of the pool commenced on 31 October and was finished on 2 November, completing another milestone as we get closer to reopening.

Following this, the key remaining deliverables include the careful dismantling of the scaffolding and cover (so as not to damage the refurbished pool), along with refilling of the pool, balancing of the water chemicals and re-commissioning of heat pumps and solar panels to get our pool back up to a lovely 27 degrees.

We are expecting this thorough



refurbishment of the pool interior to stand the facility in good stead for the next decade or more.

The pool management committee is very conscious of how much the community has missed having the pool available, and the impact on regular users, including schools and

swimming club; swimmers have lost valuable training time.

With the works complete we look forward to a return to the levels of participation and enjoyment pre-refurbishment.

We thank all those businesses and volunteers that have supported the

refurbishment process in recent months, and look forward to having you back to the complex soon.

Keep an eye on whangapool.co.nz and WhangamataCommunityPool on Facebook for updates, including our special reopening day celebrations!

Sleep essentials sale.

UP TO

50% off

Sleepyhead Serenity.



Whangamata

419 Port Road
07 865 9027

Waihi

94 Seddon Street
07 863 8787

Locally owned & operated

Free local delivery

We will take away your old bed

NEW ZEALAND MADE

Whangamata Harbour Care Spring clean

Last Saturday saw over 50 people involved in another successful clean-up of Whangamatā's harbour and estuary margins. Bottles, cans, polystyrene, wrappers, straws, wire, industrial waste, an engine etc, etc, etc! Over 350kg of this rubbish was taken to the tip in four ute loads (a big thanks to Shubahm of TCDC for his support on the day).

Whangamata Harbour Care (WHC) was thrilled with the turnout of enthusiastic volunteers, but somewhat depressed by the amount of rubbish people are thoughtlessly and deliberately allowing to contaminate our harbour edge and marine environment.

Imagine the outcry if one of our regular Orca visitors were found dead in the harbour with the post mortem showing it had ingested rubbish that choked or fatally injured it.

While that is unlikely as Orca are probably too intelligent for that, what impact are we having on many of the fish and birds around us. WHC asks that everyone be more responsible with their rubbish.

But a big thank you to all those involved, particularly Kerry Gibb (WHC Project Manager) and our very supportive sponsors, including EPL who took a boat across the harbour to clean the shoreline there.

- Photos by Whangamatā News





Baker Glass & Glazing Ltd

"Craftsmanship with care"

- Glass Repairs
- Shower Glass
- Splashbacks

- Balustrades
- Retro-fit Double Glazing
- Insurance Quotes

Member AMN
Masterglaziers network
Proudly supported
by Metro Glass




Contact 021 514 497 | glass@bakerjoinery.co.nz

[FLOORINGXTRA.CO.NZ](http://flooringxtra.co.nz)



FLOORING TO SUIT YOUR STYLE

CARPET • VINYL • TIMBER • LAMINATE • RUGS

Phone or email us! We're measuring & laying! View samples instore!

WHANGAMATA

FLOORING XTRA

Whangamata | 636 Port Road | 07 865 8562 | whangamata@flooringxtra.co.nz

Food detectives came from Hikuai School

Hikuai primary teams from year 5 to year 8 came to our New World Whangamata to assist their programme of Food for Thought to empower students with nutrition education last week.

Hikuai School has been participating in Food for Thought, a free school-based nutrition education programme developed by expert nutritionists to help kids make informed food choices. As part of the programme, schools team up with New World to complete a real life label reading activity in store!

Food for Thought is designed to engage students with practical skills and interactive lessons. From understanding how a variety of foods can help us thrive to developing detective skills for



reading food labels and nutritional information, Food for Thought makes learning about nutrition both fun and informative. Whangamatā News understands the importance of teaching our tamariki the positive role food plays in nourishing a healthy body and mind. Taking a fun dive into food groups, essential nutrients, and how they keep our bodies thriving.

Food for Thought Nutritionist, Andy Kane, said "Information about nutrition is more complex than ever, which is why it's important for kids to have access to simple, credible information that equips them with the skills needed to make informed food choices. As part of the programme, we visit the

local New World, kids are given a practical opportunity to try some of their newly acquired skills in the real world."

Hikuai School Principal Rachell Leitch told us on the day "the students have been making a food inquiry about what is in our food in class, so they are looking at amounts of sugar, salt, what makes food a healthy choice and what makes food a 'sometimes food', looking at healthy food options for now and for the future as well, this visit is about putting it into practise and actually what's in our food."

At the end of the visit, the Hikuai students received a \$60 voucher to plan and spend on healthy shared

kai for lunch.

Food for Thought is the longest-running nutrition programme in New Zealand, with over 250,000 students having benefited from the programme. Run by a team of qualified nutritionists, Food for Thought is delivered in schools right across the country. Supported by Foodstuffs, the 100% New Zealand owned and operated co-operative behind the nation's New World, PAK'nSAVE and Four Square stores, and delivered in partnership with the New Zealand Heart Foundation.

For more information about Food for Thought, visit www.foodforthought.co.nz

- Jennie Black



FUNDRAISING MOVIE NIGHT.

ELEPHANT NATURE PARK RECENTLY SUFFERED SEVERE DAMAGE DUE TO FLOODING. ALL PROCEEDS FROM THIS EVENT WILL BE DONATED TO ENP.



Love & Bananas: An Elephant Story
WINNER OF 2018 GENESIS AWARD

Love & Bananas: An Elephant Story is an extraordinary documentary about the rescue of Asian elephants.

JOIN EMMA SCOTT & SUPPORT A GREAT CAUSE. EMMA HAS BEEN VOLUNTEERING & RAISING FUNDS FOR ENP FOR THE PAST 7YRS.

20TH NOVEMBER @ WHANGAMATA TENNIS CLUB.
6.30-8.30pm
PG recommended.
\$25 . Platters & nibbles provided & bar open for purchase of drinks.

**To purchase tickets contact Emma.
Ph or text 0274087678**

HIKUI SCHOOL PRESENTS
THE
HIKUI SCHOOL MARKET

**SUNDAY 8TH DECEMBER 2024
10:00AM - 2:00PM
THE HIKUI SCHOOL GROUNDS**

**COMMUNITY AND STUDENT STALLS/
SCHOLASTIC BOOK FAIR/ LIVE MUSIC/
CAKE AUCTION / FOOD / COFFEE AND
MORE!**



**PLEASE JOIN THIS EVENT AS WE CELEBRATE OUR COMMUNITY, FOOD AND FUN!
BOOK A STALL FOR YOUR BUSINESS OR COMMUNITY AGENCY
CONTACT US FOR MORE INFORMATION: 07 8647818**

Ladies' Golf Shootout

Congratulations to Adele Henderson, our Williamson Shootout winner on 30 October. Also, to Faye Saunders our runner-up. It was a great finish enjoyed by everyone. Well done.

It was a wonderful competition with some great golf, despite a few chilly showers. Many thanks to Anne, Diana, Shona and Judy - your time was very much appreciated by us all. Thank you to our sponsor Whangamata Real Estate.

Titoki Shootout is on 18 November - details closer to the day. The Annual Forum after golf is on Wednesday, 20 November. Our final day, with Christmas lunch and prize-giving, is on 2 December.





**ENTERPRISE
WHANGAMATA**
PARADISE COAST

*Join us for Whangamata
Lunch en Blanc*
Saturday 15 February 2025
12-4pm

Location - well that is a well kept secret, until the day




The idea all started with a simple desire to meet friends and share each others company, back in 1988 in Paris

All you need to do is gather your friends, put the date in your diary and scan the QR code to register

Numbers are strictly limited, \$40 per person
BYO Picnic Lunch & Beverages
Supporting Whangamata Surf Life Saving Club



HELP US TO HELP YOU. BECOME A MEMBER. www.whangamata.org.nz

Who is that lady?

As we wander through life, we often come across people we don't notice or pay much attention to. Patsy's one of those. Married to Les, Patsy is often at the squash club to support him and is always ready to lend a hand with club things. I see her there often and say hi as I make my way to the bar. Little did I know that Patsy has a rich tennis history not only unique to Whangamata but also to New Zealand.

April 1962 a team of four women and four men (the New Zealand Davis Cup Team) left to tour Europe for six months. Patsy a young shop girl from the prestigious Farmers was in the team with her salary continued to be paid by the store.

After a short stop in Darwin, it was off to England where she competed in several tournaments. The level of tennis was high, and they had mixed results, but they were learning. Next stop the French Open, Patsy loved the clay surface and performed very well. July and Wimbledon. After an arduous qualifying, she found herself in the main draw. On a nearby court the Aussie master, Rod Laver was working his way through the main draw.

"We were paid 50 pounds for getting into the main draw, which went to the team fund..." said Patsy, "The Wimbledon fortnight was just amazing, the ultimate for any tennis player. A few of the highlights were the Queen's Garden Party, the Wimbledon Ball, and of course the chattered black Bentley taking us to



and from the tennis courts".

After the excitement of Wimbledon, it was time to head home stopping off at Hong Kong, Bangkok, Tokyo and Ipoh in Malaysia playing a week in each country arriving back home in September. "How proud I was to wear the black New Zealand blazer, which I still have, but alas can't fit into it now".

Throughout her sporting career Patsy has been ranked in New Zealand, number two in tennis, number five in badminton and number seven in Squash.

- Shaun Fay

BREAKING NEWS All Black 7s coming to Whanga

In another great coup for Whangamatā town, the champion Men's All Black Sevens team are coming to Whangamatā for a training camp from 13 to 15 November.

As part of the build-up for the opening round in Dubai next week, the team are staying at the Whangamatā campground with a full day scheduled for Thursday 14th.

Head Coach Tomasi Cama, himself a legend in the sevens world, had visited Whangamatā in the past and liked what he saw, and with the team based in Mt Maunganui it made sense to schedule in a team trip away from the crowd.

Thursday, 14 November will include a school visit from 9am to 10am, with all local schools of Opoutere and Hikua invited to attend training sessions at the club grounds. This will be followed by a team meeting and lunch.

The same afternoon is where things get interesting for the public, with a training session from 1.30pm until 3pm, a great chance to come and check out our top athletes go through their paces. The Rugby Club will be open to everyone for refreshments, and after training the team refuels and will be available for a bit of community engagement, so come along, rugby fan or not and have a chat with some top sports people.

There is another training session



booked later on Thursday from 5.30pm to 6.30pm and after a recovery period the team will be dining at the Rugby Club from 7.00pm to 8.30pm. Once again the public are invited to come along and mingle with the elite sportsmen that will be in attendance.

On Friday 15th, the team will have another training run between 9am and 10am, with a visit to BodyWork Gym at 10.30am.

Whangamata Rugby Club President Russell Choat told Whangamatā News "our club is gaining a reputation for attracting events such as this, with a great small town atmosphere and good facilities." It's another string in our bow, with recent Provincial and Valley games and also in our exciting Whangamatā News 'Breaking News' the Chiefs' Women's team are looking at doing a training camp

here as well."

Choat says that "people just want to get out of dodge, get out of the big centres and take it around the country".

Make sure that you get on down to the Rugby Club and make use of the offer to join in with these top players.

- Mark James, Whangamatā News Sports Reporter

Unique Wonder for Mahjong

The twittering of the sparrows could be heard throughout the Whangamata RSA during the annual Unique Wonder Tournament last Saturday at the Whangamata RSA.

76 players attended from throughout the Auckland and the

Waikato district. The tournament was opened by President Geoff March who welcomed all the players.

Two sessions were held with 16 hands each session.

Whangamatā was well represented

in the top eight. Congratulations to all the prize winners!

Session 1 Winner
Marion Wall, Otorohanga

Session 2 Winner
Linda Mauschwitz, Katikati

OVERALL PLACINGS

- 1st Linda Mauschwitz, Katikati
- 2nd Sue Drury, Whangamatā
- 3rd Judith Robb, Papakura
- 4th Donna Bailey, Whangamatā
- 5th Marion Wall, Otorohanga
- 6th Shona Leggatt, Bethlehem
- 7th Diane Trembath, Whangamatā
- 8th Wendy Slaughter, Mt Maunganui





Richmond Villas

LIFESTYLE VILLAGE

*Living the lifestyle,
loving the choice...*

A Lifestyle Village in Thames on the Coromandel

AVAILABLE NOW:

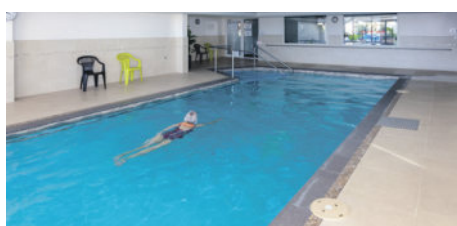
- 2 BEDROOM VILLA
- 3 BEDROOM VILLA
- 2 BEDROOM APARTMENT

ENQUIRE TODAY!

All villas and apartments are within walking distance to Thames' shops, cafes and walkways. The perfect location to enjoy your fun-filled retirement.

Our open plan, single level apartments feature covered balconies with fantastic views of the sea, Kuaeranga River and mountains.

Each unit's elegantly finished kitchen, lounge, bedroom and bathroom offer stylish warmth and light. All residents enjoy scenic views from each level's shared lounges, use of the Village Community lodge and participation in all activities and amenities at your leisure.



Phone us to view by appointment
Come and experience the difference!



82 Richmond Street, Thames
0800 868 5484
www.richmondvillas.co.nz

How to use the flood maps



The flood letter is news to me. I received mine on 16 October, 2024. I have attended all the workshops and most of the walk-arounds. Discussion did take place about the legal requirement to include natural hazards on LIM statements, but we strenuously requested letters should include solutions so owners would know how and when warnings could be removed from LIMs.

I visited the council and asked for the three images of the DEM's behind the flood map. These are height above sea level of the surface water (based on AVD1946), depth of water, and velocity. This information is too complex for online systems. Go to the council and get your copies.

From these I checked my FFL - Finished Floor Level which is 5.5m. The peak water heights on council's map do not make sense. The road has flooding to 4.6m but my back yard floods to 5.3m, yet there is a clear way between the built-up properties lower than 5.3M. This discrepancy is impossible. Water finds its lowest level. The LiDAR has missed key reference points between built up properties by omitting the connectivity of low-lying land between built spaces. This means ponding water heights are not accurate.

DEMs has another flaw - the survey modelling was done in 2013, yet I built in 2023. The LiDAR is 10 years out of date. I raised my low-lying land within the District Plan rules allowing 250m³ of fill over 250sqm in any one year.

I have been advised I have to wait until 2026 when the new 2023 LiDAR and DEM will include my changes. Maybe by then it will be

more accurate as well? Council has agreed to add a note to my LIM that the LiDAR is generated using 2013 topography and since then has a new building and ground level changes.

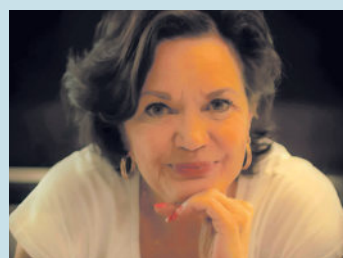
If you are one of the 3500 property owners you will know Whangamatā has been a busy building hub with hundreds of building consents issued since 2013. If you are like me and raised your ground lines, or if your home is close to the boundary the water heights may not be correct.

I find it disturbing that the council has not fronted with solutions but instead chose to issue 3500 warnings on LIMs as its stormwater priority. This is not what I joined the workshops to hear. Some of you have been waiting since cyclone Bola. Hundreds have unanswered RFS.

The Fact Sheet released with the letter is incorrect. Low lying land should be built up and floor levels raised to 150mm above the crown of the roads irrespective if flood levels may be lower. Downstream properties and neighbours are entitled to change the heights of bare land and building platforms which will affect the water heights around you. By law the Building Code requires 150mm above the crown of the road, not relying on some imaginary overland flow path that existed 50 years ago before roads were built and development took place.

More to come in the pop up sessions and December.

- Ian Holyoake, member of Whangamata Ratepayers Assoc. & stakeholder representative on the TCDC Stormwater Project workshops



For advertising queries contact Jennie Black
Editorial/Sales Director
Phone 021 0232 1661
jennieablack@gmail.com

We welcome your letters, articles, photos, news tips and advertising enquiries

- We ask that letters and articles be no more than 250 words, although exceptions can be made.
- Photos should be high resolution and in focus.
- Include your name, no noms de plumes.

For editorial or photographic matters, phone Jennie on 021 0232 1661 or email WhangamataNews@gmail.com

Stormageddon

Whangamatā has been hit by its most severe storm ever. This time it's not the rain ratepayers have to worry about.

Friday, 16 October, was a clear day with blue skies – but will be remembered as the day the council chose to advise 3500 property owners that they have been caught up in a flood modelling exercise and it will appear on LIMs. Whangamata Ratepayers' Association (WRA) does not accept councils 'blanket' approach to tag properties without correct or reliable information.

Natural Hazards NZ has only recorded 32 Whangamatā properties with damage up to 2024. The flood mapping uses a process called LiDAR, which stands for Light Detection and Ranging using light in the form of a pulsed laser to measure the topography of the ground, then creates digital elevation models (DEMs) as a representation of the water depth under certain rain events. In this case a 1% AEP or a 1 chance every 100 years probability of occurring. So much for 1% when we have experienced at least 9 such events since cyclone Bola in 1988? Many of you have witnessed these storms so you will know if DEM is accurate or not.

In Whangamata, each 200mm of our sand absorbed 100mm of rain (Opus) until the water table fills up. In prolonged and heavy rain events infiltration into sand becomes overwhelmed resulting in surface ponding. The modelling does not include any parameters so we don't know what exactly is being modelled..

The LiDAR information was collected in 2013 and is 10 years old. During this time Whangamatā has experienced extensive development. Development changes permeable ground into roads, roofs and concrete resulting in increases in runoff by 4 times (WRC). Roads were built in a criss cross manner filling and blocking the natural valleys preventing surface water finding its way to rivers and the ocean. This massive increase in run off required a stormwater management policy. We understand this plan was in place as early as 2001 but was not followed through.

Pipes can be used to drain road water – but these are only designed for smaller events like a 1:10 (10%AEP) or 1:50 (2%AEP) flood event up to 137mm/hour for a 10 minute duration. Soakage pits on the other hand have guidelines to soak up to 100mm rain in 24 hours.



Pipes will reduce but not stop surface flooding when soak pits fill or if pipes cannot discharge. We are not aware if the model has included discharge by pipe and by soakage pit.

Many of our roads don't have stormwater pipes. Neither do houses. These rely on soakage devices that become overwhelmed more often than a 1% AEP resulting in surface water ponding and flowing onto low lying surrounding land. This is called trespass water. The flood maps are in the main identifying where man-made flooding is being created because infrastructure is not in place. The blue flooding is not true natural hazard flooding like rivers overtopping. We created this situation.

Council is required to comply with the RMA (1991) to avoid or mitigate natural hazards, not create them, and to issue PIM's only if the existing roading, sewage, water and stormwater systems have adequate capacity. The Building Act 2004 requires council to ensure new building floor levels to be no less than 150mm above the crown of the roads as there are few natural overland flow paths left except the roads themselves. Had successive councils complied with the RMA and Building Act over the past 24 years fewer flood notices would need to be issued because stormwater management systems would be in

place. The DEM modelling is not distinguishing the major difference between floor levels flooding and bare land flooding. Floors flooding means damage, trouble with insurers, loss and harm. Surface flooding is nuisance water that eventually goes away without significant damage.

Council is required under the Local Government Official Information and Meetings Act to state if the property is subject to natural hazards one of which is flooding. Most of our flooding (the blue shading) is man-made originating from roading and new developments that increased water trespass. LIM notices must provide sufficient evidence of the correctness of the modelling exercise and reasons why the notice is required. Issuing 'blanket' notices to 3500 property owners is not acceptable and does not meet the reasonableness test of LGOIMA. Council has no excuse to 'blanket' issue warnings as it knows which properties it has 'proof' of flooding. Council holds specific and relevant records of all house floor levels, hundreds of flooding RFS it responded to, the Opus owners flood survey in 2003, flood photographs in papers, records from NZ Insurance Council, building consents issued since 2001 stormwater plan, Opus 30 odd recommendations for stormwater improvements that were not done and certainly after it received the

2013 LiDAR information behind DEM. Issuing 3500 letters is plain lazy and causing unnecessary stress to our community.

Council has failed to meet its duties under LGA by not installing the required infrastructure to approve development and building consents in the flood zones highlighted blue. Just 3 years ago Whangamatā had \$6.3M of rates collected to spend on stormwater. Where has this money gone? To modelling, not infrastructure.

Not affectionately called the Mooloo Lake this image was part of the 2005 Opus report. Over the last 19 years council has approved more development with more impervious ground resulting in deeper water taking longer to drain and now delivering flood letters and tags on LIM's. What was expected was drainage not warnings.

The Whangamata Ratepayers Association advises owners that received notices to visit councils offices and obtain the 3 maps of their properties. Get this information and come along to our public meeting in December. Date to be confirmed.

If you think you are affected by these letters, you should get your maps, attend council pop ups and consult your lawyer.

– Whangamata Ratepayers Association

Why on my LIM

Any LIM notice must be reliable (accurate if data used), specific (to the property it relates to), and include sufficient direction (not advice) that a lay owner can understand and take actions to resolve (MBIE Determinations). A familiar example is Geotech

warnings. Owners can engage a Geotech Engineer who has experience in specific designs to prepare a design to meet structural stability.

The DEM models include this statement of disclosure: TCDC

give no warranty in relation to the data (including accuracy, reliability, completeness or suitability) and accepts no liability (including, without limitation, liability in negligence) for any loss, damage or costs relation to any use of the data.

TCDC can hardly consider the LIM warning to be relevant and reliable if it disclaims all data content. No property owner has the ability by themselves to correct councils' failure to install infrastructure over the past 24 years.

Once Upon a Dream

Whangamata Dance Studio put on another memorable show at the Memorial Hall over the weekend. *Once Upon a Dream* featured over 140 students aged 5-18 years.

This was the first show at the helm for dance studio owner Amy Toroa. The production was based on the tale of *Sleeping Beauty*. The main character Rose (played by Torah Kennings) is put into a deep sleep by the evil Maleficent (played by Charlotte Lima). Rose journeys through dream lands of colours, elements and toys before discovering the secret of true love, which enables her to wake up.

A few sinister twists saw rag dolls turn rogue and zombies make their way onto the stage. Thankfully good triumphed over evil in the end! As



always, the show was a very high calibre production. Jazz, tap, hip hop and contemporary dances told the tale in a magical kaleidoscope of colourful costumes and amazing make up.

Amy and the Whangamata Dance Studio teachers would like to thank everyone who made the show possible.

- Photos by Katrina Brickwood



\$1 WINGS WEDNESDAY

from 4:30pm until sold out

FULL SIZE BUFFALO WINGS!!

\$1 PER WING!!

Dine in only

conditions apply

Pasta Thursday

ANY HAUS PASTA & EITHER A PINT OF TAP BEER OR GLASS OF HAUS WINE

Only \$23

Conditions apply

FRIDAY SHOUT

\$10 PINTS
\$10 PIZZAS
\$10 HOUSE WINE
\$10 COCKTAIL

Every Friday 2:30pm - 5:30pm

Pizzas are available for dine in or takeaway

SHELLFISH SATURDAY

Grab 1kg of NZ greenlipped mussels in a Thai green curry sauce & a pint of tap beer or glass of house wine

ONLY \$25

conditions apply

GIVE A SCHNIT SUNDAY

Grab a chicken OR pork schnitzel served with fries, slaw & gravy matched with a pint of tap beer OR glass of haus wine

ONLY \$20

conditions apply

Follow us on Facebook & Instagram to keep up to date with all our events & deals @crafthauswhanga

CRAFT HAUS
Gastropub Est. 2022

711 Port Road, Whangamata
@crafthauswhanga - www.crafthauswhanga.co.nz
07 865 6300

Run the Hoop with Twilight Croquet



Whangamatā News caught up with Filly Buchanan and the competitive players for the new season of Whangamata Twilight Croquet.

I've gotta say I didn't know a lot about the game, but I think I'm hooked! There are 32 players for the initial seven weeks, then a barbecue, then another seven weeks and before you know it the grand final, complete with spot prizes and pressies.

Catching up with my friend Coralea, as the youngest present, she told me "It's a bit of fun, great for skills and love bashing the other players' ball out of the way," apparently it's a



cut-throat game - I'm liking it now!

It's thought that the sport was invented in Ireland and introduced to England in the 1850s. You'll notice that croquet is a French word - it's believed that the French person discovered the sport when it was brought over to England from Ireland in the 1850s.

It's also thought that croquet started billiards - with the cold weather in England, they took the green inside, that's why the tables

are green and became the basis of billiards, snooker and pool. It's a really old game and yet Filly tells us local teenagers come to play too.

This is the beginning of the 36th year of croquet in Whangamatā, impressive, a strong but quiet group smashing competition, playing the hoops and having companionship and fun. Loved it.

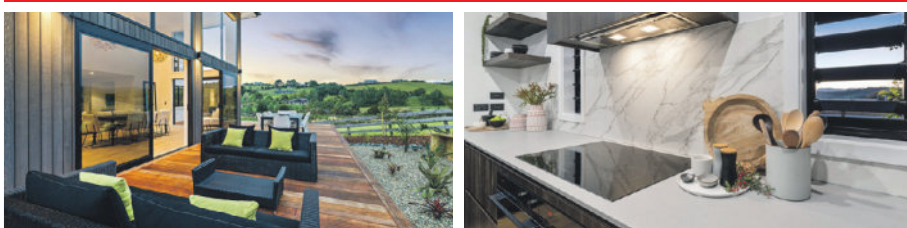
- Jennie Black



**Whatever the site, we'll help you
create the perfect home.**

Jennian
HOMES

614 Port Rd, Whangamatā E: coromandel@jennian.co.nz P: 07 865 6767




Baker Joinery Ltd
"Craftsmanship with care"

- Kitchens
- Laundry
- Joinery
- Bathrooms
- Wardrobe Solutions
- Pre-Hung Doors

For top-notch craftsmanship & expertise in joinery & cabinetry
contact 07 863 8962 | info@bakerjoinery.co.nz
Or pop into our Show Room 46 Johnston Street, Waihi

SHOW ROOM OPEN SATURDAYS

Curtains and Blinds and More



Whangamatā and surrounds for:

- Curtains, Sheers, and Linings
- Sun-screen, Light-filter, & Blockout Roller Blinds
- Wood, PVC, and Aluminium Venetian Blinds
- Honeycomb Blinds | Roman Blinds
- Wood and PVC Shutters
- Motorisation and Automation

Locally owned and operated providing a
complete in-home service from
consultation to installation

**Contact Louize or Gavin on
027 4777 916**
or email info@curtainsandblinds.co.nz

Whangamata Snooker Masters Singles 2024

The battle of the green baize concluded last Sunday afternoon at the Whangamata Club with the final event being played in front of a group of avid supporters and fans.

An intense battle took place between Michael Hewer of Kamo, and Maria Paul- Bennett of Tauranga; with Michael Hewer taking out the coveted Championship

title. Whether you are a seasoned player or a passionate fan, it was a weekend of talent, skill and the spirit of sportsmanship.

On other tables at the same venue players did battle for the other event titles with the results as follows:

- The Plate event was won by Tom Adams of Kaitaia, Runner Up Merv Gollan of Takapau.

- The Flight event was won by Scotty Friend of Tauranga, Runner Up Glenn Spotswood Of Waipukurau.
- The Consolation Plate event was won by Boy Ormsby of Papakura, punner-up Thomas Thompson of Kaitaia.

The event organisers acknowledge the support of local individuals and businesses whose financial

contributions boosted the prize pool, and congratulate those who were fortunate enough to have drawn the player who was a winner for them.

Thank you to all participants and their entourage who supported our event, we look forward to seeing you for more of the same next year.

- Jennie Black,
photos Whangamatā News



CARAVAN FOR SALE Jayco 28 Foot 2002

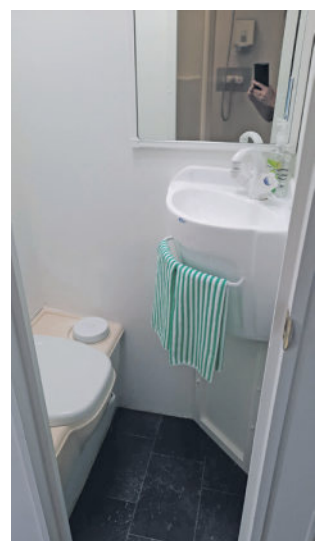
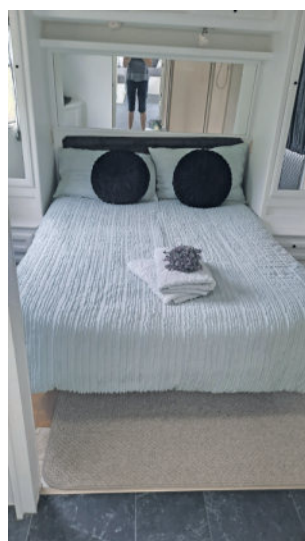


**Need room for family this summer?
Holiday workers need accommodation?**

AFFORDABLE TINY HOME!

Totally renovated, new carpet, vinyls, repainted interior, shower, toilet, double bed, oven, microwave, it really is chic! All the extras! New 5 year electrical warrant.

**View Chartwell Avenue, Whangamatā by appointment
Phone 021 0232 1661**





Whangamata Real Estate

LICENSED REAA 2008

07 865 8499 328 Ocean Road, Whangamata whangamatarealestate.co.nz



FOODBANK COLLECTION

Sunday 1 December 10am – 12pm

WHANGAMATA – ONEMANA – OPOUTERE

Our team will be driving all the streets with the help of our emergency services collecting non-perishable food items. You can also drop off any items at our Ocean Road office

Help us stock our local foodbank prior to Christmas!

WHANGAMATA CHRISTMAS PARADE & FAIR



**Friday 13 December
5.30pm – 8pm**

Join us on Port Road for the parade.

Get those creative imaginations buzzing and register a float, you still have time.

Collect a registration form from our office at 328 Ocean Road, Whanga Books or the Information Centre.

But the fun doesn't end there. After the Parade keep the excitement going at Williamson Park, with entertainment, games, delicious food, markets and activities for the whole family.

So, mark your calendars and joins us for some fun.



GT Falcon Show and Shine Display drew the crowds



The New Zealand GT Falcon Club had an impressive show of glistening chrome and paint with interiors to be envied last Saturday at the Whangamata Club car park.

The New Zealand club displayed 22 cars, mostly vehicles from the North Island, travelling from Whakatāne, Tauranga and just one from Whangamatā. They were joined by our Beach Hop contingent including the new Mustang prize for 2025.

The club used to have a large group from Auckland but, as owners aged and moved to other townships, it has scattered membership.

Thanks for coming to Whangamatā - it was absolutely brilliant.

- Jennie Black



Cricket season underway

Whangamatā News spoke last week to the newly elected President of The Whangamata Cricket Club, Nate Johnson, who explained the plans for the season ahead.

The Whangamatā cricket season is underway, with six teams battling it out in the highly anticipated twilight T20 competition - Carters, Crazy Horse, The Brothers, Windies, The Dark Side and The Pork Chops. In a round robin format, two teams play on Tuesday, Wednesday and Thursday up until Christmas (including a finals playoff), then another round the same in the new year.

There is a Thames Valley Sunday competition on again, with four teams from around the region(Thames, Whitianga, Waihi and Whanga) travelling to play each other as a home and away, with pride on the line. There will be a couple of tournaments arranged with 6-8 teams involved as well so it's a busy old season.

If you fancy a game, the teams are always on the lookout for new players, so get on down and speak to Nate, contact him through the fb page or just come on down and watch.

- Mark James



Sports results

MAH JONG

1 November: We had 56 players. Some out of towners here for the Unique Wonder Tournament. Good luck to you all joining in with that.

1st with 45 pts: Carol Ferris
2nd with 43 pts: Donna Bailey
3rd with 42 pts: Rosemary Forsyth

The lucky number was 11 and this was drawn by Shona Corbet.

TABLE TENNIS

31 October: 11 games each were played. Wayne Broome was first with 9 points, Roger Wolfe was second with 8 points and Keith Gribben was third with 7 points. Some great shots and good fun.

RSA 500 CARD CLUB

30 October: The winner on the day was Lloyd May. Robyne Curd won the chocolate bar and the raffle.

CLASSIFIEDS

WANTED TO BUY

VEHICLE WANTED: Reliable work car, station wagon or small van. Must have rego & warrant. **Phone 027 265 7112.**

PUBLIC NOTICE

WHANGAMATA SPORTS & RUGBY CLUB AGM

SUNDAY, 24 NOVEMBER at midday
Refreshments and light food after the meeting.
AICKIN ROAD, WHANGAMATA



Annual Bridge Spring Fling

Amazing concentration is shown in this photo of members of the largest group of Bridge players we have had in Whangamatā at least since the start of Covid. 28 players, from around town and from as far afield as Auckland, Pukekohe and Bethlehem, came together last

Friday at the Bowling Club rooms for a magical lunch, followed by an afternoon of bridge, and then very social drinks for an hour or so for the players and their partners. Renewing old friendships made the day so cool. Just marvellous.



Whangamata
Bridge Club

Free
Lessons!!

**Body not so agile these days?
Use BRIDGE to help your brain.**

For more info, call or text 027 209 9741

@realty

- Unbelievably *Low fees*
- Outstanding *Service*
- Incredible *Marketing*

Lindsay Turnbull | 0274 238 093

lindsay.turnbull@realty.co.nz

www.atrealty.com.au



Only the BEST TRADIES will do! Use Locals... For Locals... Support Locals!

ASIAN FOOD



A&A Asian Store

Shopping made easy

17 ROSEMONT ROAD, WAIHI (opp. Farm Source)
• Japanese • Korean • Filipino • Vietnamese
• Malaysian • Thai

Ramen & Buldak noodles, corn dogs, dumplings, fish cakes,
frozen meals, sweets, drinks and so much more...

FREE DELIVERY TO WHANGAMATA
Tuesday - Sunday 9am to 5pm • Phone 021 0256 107



SMALL ENGINE REPAIRS

ANTS REPAIRS

Whangamata-based small engine repairs & maintenance

- Chainsaws • Lawnmowers
- Ride ons • Weedeaters

121 Sharyn Pl • 021 0244 2791
ants.repairs.nz@gmail.com

SCAFFOLDING



SCAFFOLDING | SHRINK WRAP
TEMPORARY FENCING

027 611 6822
bradley@activesite.co.nz
www.activesite.co.nz
211 Peacockes Rd, Hamilton



LANDSCAPING

Beach Contractors & Landscape Supplies

LANDSCAPING SUPPLIES:

- | | | |
|----------------------------------|---|---|
| Bark, mulch, compost and topsoil | Sand, lime chip, river stones and pebbles | Cement, builder's mix and a range of metals |
|----------------------------------|---|---|

Delivery service available

Whangamata Yard 2546 Waihi Whangamata Rd M. 027 261 1262
Waihi Beach Yard 691 Waihi Beach Rd P. 07 863 5340

LAND DEVELOPMENT



Subdivisions
Boundary Markings
Land Use Consents Topographical Surveys
Building Setout and Certifications

Contact us
0508 4 BIRCH
tairua@birch.nz
244 Main Road, Tairua
www.birch.nz

EARTHWORKS



- Bobcat & excavator
- Tight access work
- Site works
- Topsoiling
- Driveways
- Hole drilling
- Concrete prep
- Cartage

Shay 021 742 966 | www.blackhillearthworks.co.nz
info@blackhillearthworks.co.nz

PAINTER & DECORATOR

BOOF BOLAND
PAINTER & DECORATOR

M: 0274 367 254
E: jenboof@outlook.com

IT SUPPORT

Boot it.

FIBRE INTERNET
now available to order from Boot I.T.

We are the Coromandel's only local Fibre Internet Provider, and the ONLY provider that offers 7 days per week support.

Call us on 0800 242 266 to find out more.

CONCRETE

BROWN MORE CONSTRUCTION
CONCRETE CONTRACTORS

Any Concrete Requirements: Slabs, driveways, patios, paths, etc
All types of concrete - colour - finish
Council Permits for Vehicle Crossings
Excavation to finished product • Saw cutting & drilling

We take pride in doing a quality job at a competitive rate

REX: 027 285 5489
P. 07 863 3364 • office@brownmoreconstruction.co.nz
www.brownmoreconstruction.co.nz

PAINTER & DECORATOR

Gavin Johnson
PAINTER & DECORATOR

Interior/Exterior Painting
Wallpapering
Cedar Cleaning and Restoration Service

0224 552 363
brushstrokeswhangamata@gmail.com

DIGGER & CARTAGE

COAST DIGGER & CARTAGE

- Digger & Tip Truck Hire
- Driveways
- Building Digouts
- Site Works
- Concrete removal
- Track work
- Hole Drilling
- Tree Felling & Removal

Murray Clarke 027 2010 209
muzzclarke66@hotmail.com

FENCING

RURAL FENCING • RESIDENTIAL FENCING
POST AND RAIL • RETAINING WALLS
POLE SHED BUILDINGS
ORCHARD BUILDS & MAINTENANCE

coastline
FENCING LTD

BLAIN TEMPELMEYER 027 784 6538
coastlinefencing7@gmail.com

PAINTER

Coastline Property Painters

Protecting your investment Communication is everything
Interior ■ Exterior ■ Roofs Updates & photos as your job progresses

Call Richard Upton: 0274 884 881 / www.coastlinepropertypainters.com


Use Only the Best Services in our Community!

Use Locals... For Locals... Support Locals!

OUTDOOR COVER

Covered.

- Louvres
- Privacy Panels
- Awnings
- Sails



LOUVRESYSTEMS

info@covered.co.nz 07 865 6207 or 027 497 1236
www.covered.co.nz 300 Casement Rd. Whangamata

CURTAINS / BLINDS



Specialising in:

- Curtains
- Roman Blinds
- Cushions
- Duvet Covers
- Roller Blinds
- Shutters

croft design

306 CASEMENT ROAD, WHANGAMATA
M. 0274 481 957 | E. beth@croftdesign.co.nz

CURTAINS / BLINDS

Curtains and Blinds and More
Whangamatā

LOCALLY OWNED AND OPERATED

- Curtains
- Roman Blinds
- Venetian Blinds
- Shutters
- Roller Blinds
- Honeycomb Blinds

100% Mobile Service
We come to you, Free Measure and Quote

Call Louize or Gavin
on 027 4777 916
or email info@curtainsandblinds.co.nz

FRAMING



- Picture framing
- Framed mirrors
- Art installation
- Pick up & delivery

Ade Cunningham
M. 0274 929 695 or P. 07 575 9149
info@framesnz.co.nz • www.framesnz.co.nz
118 Brook Pl, Whangamata

ELECTRICIAN

GREG HENSTOCK ELECTRICIAN LTD

Registered Electrician
One Man Band

WHANGAMATA
0272 580 366



HANDYMAN

HANDYMAN

30 yrs experience, specialising in:

- Bathroom, deck & building repairs
- Gib fixing & plastering
- Interior /exterior painting

Please ring Rex on 021 997 428

BUILDING & LANDSCAPING

HBL HANSEN BUILDERZ
BUILDING & LANDSCAPING
COMMITTED TO EXCELLENCE
Contact us to discuss your project & a free estimate today



ADRIAN 0274 263 895 | hansen.builderz@gmail.com | HBLHomesnz
Residential | Commercial | Alterations | Additions

ARCHITECTURAL BUILDERS

HOME & Lifestyle

- Architectural Builders
- Interior & Colour Design Services
- Project Management

For trusted expertise with your building project

Katrina Jackson 027 273 0685 | Leigh Goodman 027 4475 423
info@homeandlifestyle.co.nz

BUILDING WASHING

HOUSE WASHING

Exterior house or commercial building wash, roof wash, fences, driveway, patios – soft-wash for best moss and lichen clean and treatment, exterior window cleaning, or general water blasting, 100m of hose so access is no problem
Prompt local service with 20 years' experience

Ph 0800 747 787 email atlasgroup@xtra.co.nz
or dial Andy direct on 027 313 4386

CLEANING



we'll take care of it

- Carpet Cleaning
- Pest Control
- Flood & Fire Restoration
- Stain Removal
- Upholstery Cleaning

07 863 8358 or 0800 225 552
whangamata@jae.co.nz




AUTOMOTIVE & BOATS



BOAT TRAILERS, CARS, CLASSIC & HOT RODS

ONLY Repco STOCKIST IN TOWN! ONLY HONDA AGENT IN TOWN!

Aickin Road, Whangamata (next to Bunnings)
P. 865 9073 | E. office@jcdcustoms.co.nz
Mon-Fri from 8am

TRAVEL BROKER



Kay Gregan
TAANZ BONDED Travel Broker & CLIA Accredited Cruise Specialist

AWARD-WINNING TAANZ BONDED TRAVEL BROKER
Travel Broker & CLIA Accredited Cruise Specialist
Whangamata 07 865 9568 | M: 027 337 6222
Kay.Gregan@thetravelbrokers.co.nz
thetravelbrokers.co.nz/kaygregan



ELECTRICAL

For All Your Electrical Needs



Now Open In A Second Location
Introducing Laser Electrical Waihi

WAIHI 07 863 7746 WHANGAMATA 07 865 9309
waihi@laserelectrical.co.nz whangamata@laserelectrical.co.nz
40B Kenny Street 100 Lindsay Road

KITCHENS

McBeth Rd Orchard Joinery
Affordable joinery

Kitchens new or upgraded
Laundries & bathrooms
Wardrobes & storage units
Free estimates

Tony & Nicky Ball - 027 229 2255
Whangamata

BUTCHER

MEAT AT THE BEACH

- Specialty Cuts • NZ Home Grown Meat only
- In-Store made Sausages • Home of Whanga Bacon, Whanga Black Pudding & Ham on the Bone!

Get in to order your Christmas Ham

601 PORT ROAD, WHANGAMATA P. 07 865 7241
MON-FRI 8.30AM-5PM • SAT 8.30AM-3PM

Only the BEST TRADIES will do! Use Locals... For Locals... Support Locals!

BUILDER

MJC BUILDERS

Building with pride

- FENCING
- DECKS
- PERGOLAS
- ROOFING
- ALTERATIONS
- BUILDING REPAIRS
- CONCRETE DRIVEWAYS
- FULL LANDSCAPING



MIKE CUNNINGHAM M. 021 0677 555
E. mjc.builder.whangamata@gmail.com

TREE SPECIALIST



QUALIFIED ARBORIST

30 years experience in all aspects of tree work

- Pruning
- Felling
- Storm damage
- Hedge trimming
- Confined space dismantling
- Debris chipped
- Free quotes and more

Professional and reliable service – fully insured

Phone Greg Nicholson on 07 865 6769 or 021 133 0937
email: nicholsontreeservices@hotmail.com

PODIATRY

Pedicare Services

Professional Foot Care

Alison Walkington
Registered Nurse

Home visits by appointment



Mobile 027 663 2320 or
email alison.c.walkington@gmail.com

ARTWORK

PET PORTRAITS
& ANIMAL ART

by Donna

- animalartbydonnanz
- animalartbydonna
- 027 455 0608
- donnaredbeach@msn.com



PHOTOGRAPHER

Pete Stretch PHOTOGRAPHY

Family portraits • Weddings • Corporate

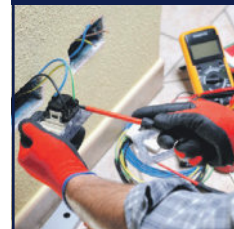
027 458 1179

peterstretchphotography@gmail.com

20% off all family group sessions
until 30th September 2024

ELECTRICIAN

PITCHER ELECTRICAL



YOUR TRUSTED
MASTER ELECTRICIAN
working in Whangamata,
Opoutere, Onemana and
Whiritoa

**RESIDENTIAL AND
COMMERCIAL SERVICES**

TONY PITCHER 0274 589 573

WINDOW CLEANING



Your
ecofriendly
window
cleaning
service.

Mike Horton
info@purenclean.co.nz

M 021 501 324
www.purenclean.co.nz

HEAT PUMPS



We Sell and Service all Major Brands

Your heat pump specialist
On site marine & commercial refrigeration

Call today for a hassle-free quote

027 933 8599

www.reefrefrigeration.co.nz

ROOFING



RIKKI ROOFING
we aim for the roof shout

Rikki Daysh, Owner/Operator
022 408 8424
rikkisroofing@gmail.com

- ▶ Residential re roofs & new roofs
- ▶ Spouting
- ▶ Cladding
- ▶ Maintenance & re screws

PLUMBER

Russell CHOAT
GAS & Plumbing

Whangamata

FOR ALL YOUR GAS-FITTING, PLUMBING,
DRAINAGE & ROOFING REQUIREMENTS
Registered craftsman & member
of Master Plumbers

M. 0274 714 869 E. office@choatsplumbing.co.nz

ELECTRICIAN / DOG GROOMER



Rusty Sparks

EVERYTHING
ELECTRICAL

Residential, Commercial,
Data, Alarms

021 800 017

admin@rustysparks.nz



**PIMPED
PUPS
GROOM
ROOM**

021 850 017
WHANGAMATA

WINDSCREEN REPAIRS

MONDAYS:
RSA Carpark
Whangamata

TUESDAYS:
Fresh Choice
Carpark
Waihi



André Gillbanks
Phone 021 617 664

Chip Repairs
Windscreen Replacements
Insurance Claims Arranged

ARBORIST & FIREWOOD

SHORT BACK 'N' SIDES LTD

Arboricultural Contractors

TREE PROBLEMS?

Dismantle, pruning, removal, stump grinding. BIG or SMALL – we do them ALL!

0274 390 367

www.shortbacknsides.co.nz

FIREWOOD

Available all year round. Smoking chunks or dust, kindling, bagged wood. Delivery available or pick up on Fridays from 15 Dean Cres, Waihi. Gold Card discounts. Also 100s of native and exotic milled slab timber, garden mulch, smoking wood.

0274 390 367 or our firewood hotline 022 043 1862



BUILDER



**RESIDENTIAL
SERVICES**

LBP Builder / Renovation Specialist

07 865 6555 / 027 238 1659

skfrs@xtra.co.nz

Use Only the Best Services in our Community!

Use Locals... For Locals... Support Locals!

BINS

Skip Bins, Wheelie Bins, Front Load Bins

Contact us today! *We can help!*



0800 4 MY BIN - www.smartbins.co.nz

Proudly 100% Kiwi owned

BOARDING KENNEL / CATTERY



SPOT X Quality care and facilities in a rural setting

Office hours: 9am-12 noon and 3-5pm daily
INSPECTION WELCOME
Ph 07 865 8242 or 027 624 3890
Annette Gillatt
4km south of Whangamata on the main road

BOARDING KENNELS AND CATTERY

DRIVING LESSONS




Helping young people to drive safely and intelligently.

Thames Driver Training

Book online at thamesdrivertraining.co.nz
Gavin Buchanan – Thames Driver Training
027 268 6381

REFRIGERATION & AIR CON



TIDELINE REFRIGERATION
WHANGAMATA

- * HEAT PUMPS
- * REFRIGERATION
- * AIR CONDITIONING
- * VENTILATION

SERVICING IN THE COROMANDEL AREA
0272121994 - 0277251820
TIDELINEREFRIGERATION@GMAIL.COM
WWW.TIDELINEREFRIGERATION.COM

PAINTER



TOTAL PAINTING SOLUTIONS

CALL LEE ON 0275 656 336
Lee.tpms@gmail.com

30 Years of Interior & Exterior Painting
Delivering High-Quality Service with Exceptional Results

ARBORIST



- Professional experienced and insured arborist
- All tree work including removal / pruning
- Hedge trimming and property maintenance
- Quality firewood and smoker wood

Heath van Leeuwen 0210 838 9922
email Heathsvan@gmail.com

TREE SPECIALIST



- Tree felling & pruning
- Hedge trimming
- Stump grinding
- Fully insured
- Qualified arborist

TREECARE WHANGAMATA LTD
Contact Ben 021 827 355
treecarewhangamata@gmail.com

LAWYERS

USSHER LAWYERS

- SINCE 2007 -

We can help with all of your general legal needs

- Conveyancing if you are buying or selling property
- Sale and purchase of business assets • Commercial leasing
- Relationship property • Trusts • Wills • Enduring powers of attorney

www.ussherlawyers.co.nz | Phone 07 865 8824
We've moved – now at 123 Lindsay Rd, Whangamata

WARDROBES



Steve Parkinson
Central, East & South
021 0733 100
steve@wardrobesdirect.co.nz

ALSO SERVICING WHANGAMATA
www.wardrobesdirect.co.nz

Showroom and office:
175 Marua Rd
Mt Wellington

LAUNDRY

WHANGA LAUNDROMAT



The only locally owned & operated laundromat in town!

OPEN 24 HOURS - 7 DAYS A WEEK
CASEMENT RD, WHANGAMATA (OPPOSITE WAITOMO FUEL)

SCAFFOLDING



- Mobile scaffolding
- Roof edge protection
- Construction scaffold

Servicing Whangamata and surrounding areas

Please ring 022 076 0160 or email whangamatascaffolding@gmail.com
102 Lindsay Road, Whangamata Est 2014

TYRE & BATTERY SERVICES



WHANGAMATA TYRE & BATTERY

KUMHOTYRES 7 Car tyres / Wheel alignment
4WD tyres / Tyre repair
Wheel balance

Phone Simon 865 7698 Small implement tyres
Batteries - car & marine

CHALLENGE Cnr Port & Ocean Rd, Whangamata
www.challenge.net.nz

WINDOW & DOOR SERVICES



WHANGAMATA WINDOW & DOOR SERVICES

Bryce Hall
M. 027 282 2057
Ph. 865 9714

Reglaze // Repairs // Maintenance
Retro Fit Double Glaze

whangamatawindowdoorservices@extra.co.nz

HOME SERVICES



YourLocal
NZ's Trusted Home Services

Avi@yourlocal.nz • www.yourlocal.nz • 022 534 5478

We specialise in

- Exterior house wash, windows, driveways, patios, decks, fences & roofs - Commercial, residential, rural, new builds & painters prep - Pests treatment (fumigation)
- Rodents & wasps - Chimney sweeping - Roof treatments

BUSINESS FRANCHISE FOR SALE

We cover Coromandel, Thames, Waihi, Waihi Beach, Whitianga, Whangamata

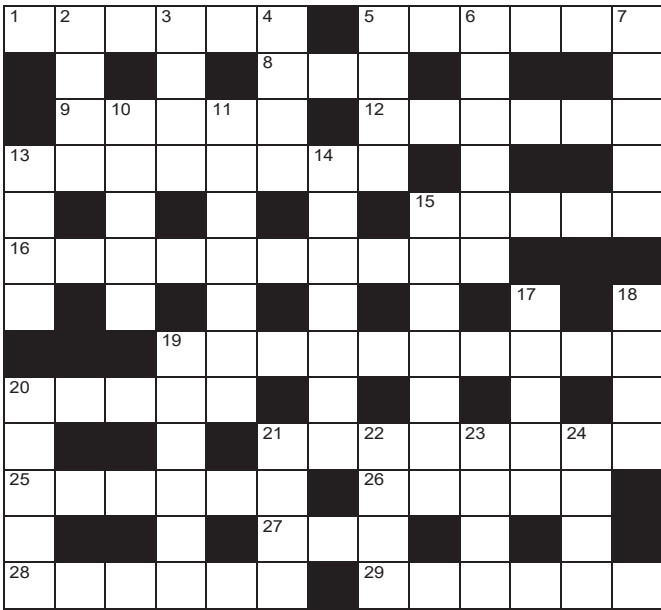
CLOTHING

YUKEYS
3620

Clothing Alterations and Repairs
LADIES - MEN - CHILDRENSWEAR

Open Tuesday to Friday 8.30am to 1.30pm
Saturday 9am to 12pm
105 Aickin Road (just off Port Road)
Whangamata
M. 021 0289 3968

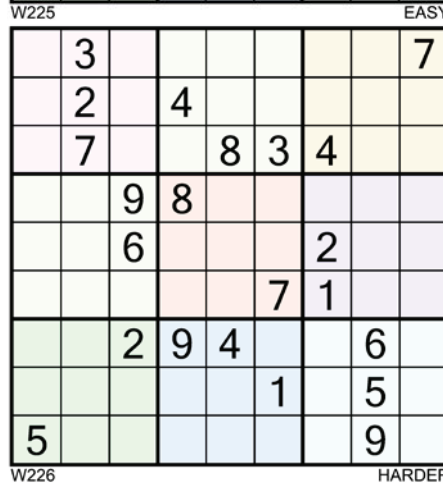
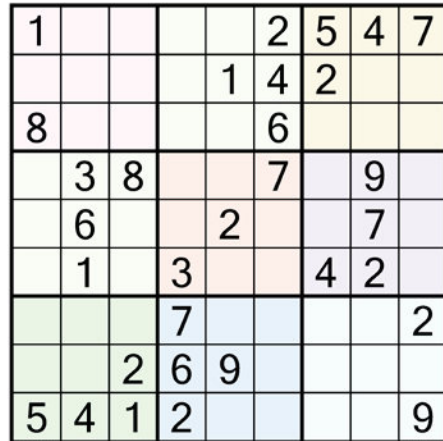
QUICK CROSSWORD



- Across**
 1. Soft felt hat (6)
 5. Disguised (6)
 8. Charge (3)
 9. Up and about (5)
 12. Atone (6)
 13. Install monarch (8)
 15. Inundate (5)
 16. Harshly (10)
 19. Inexorable (10)
 20. Liability (5)
 21. Piston chamber (8)
 25. Paid male escort (6)
 26. Farewell (Fr) (5)
 27. Spoil (3)
 28. Excellent (6)
 29. Supernatural being (6)
- Down**
 2. Style, flair (Fr) (4)
 3. Solemn promise (4)
 4. Bushy hairdo (4)
 5. Mother (Fr) (4)
 6. Provide (6)
 7. Old-fashioned (5)
 10. Strict or severe (5)
 11. Annoying (7)
 13. Test (4)
 14. A thing new and interesting (7)
 15. Lacking elasticity (7)
 17. Tolerate (5)
 18. Rip (4)
 19. Put upon (6)
 20. False (5)
 21. Search thoroughly (4)
 22. Cooking fat (4)
 23. Pleasant (4)
 24. Currency (4)

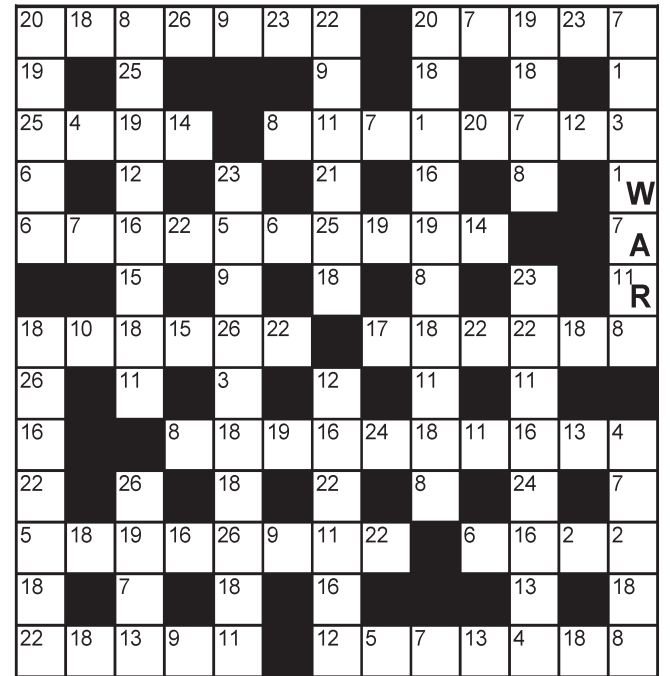
SUDOKU

Fill the grid so every row, column and 3x3 box contains the numbers 1-9



DECODER

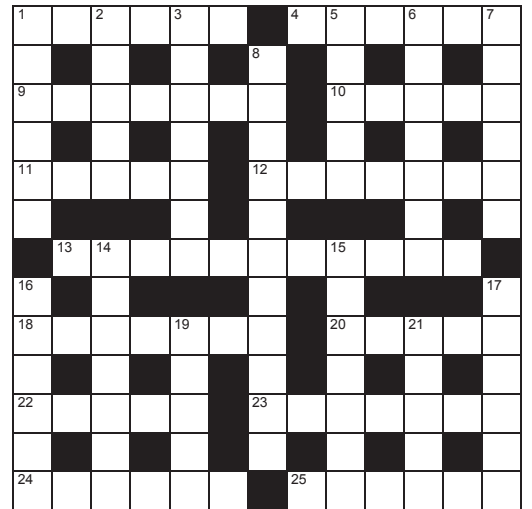
Each number below represents a different letter. Find the correct letter for each number by working out the word from the letters given. To keep track, cross the letters off on the grid below.



A	B	C	D	E	F	G	H	I	J	K	L	M	N	O	P	Q	R	S	T	U	V	W	X	Y	Z
1	2	3	4	5	6	7	8	9	10	11	12	13													
W						A					R														
14	15	16	17	18	19	20	21	22	23	24	25	26													

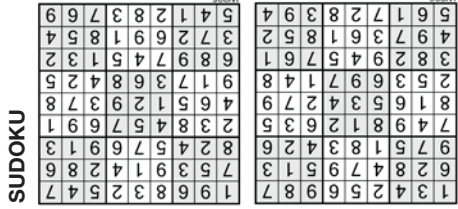
CRYPTIC CROSSWORD

- Across**
 1. Divide the cult in two? (6)
 4. Allow to be lean (6)
 9. Gets Tau a rat maybe or a lizard from NZ (7)
 10. Mr Spearman? (5)
 11. Diamond I'm out to get as extra (3,2)
 12. Managing the marathon (7)
 13. Where to look for chickens? (6,5)
 18. Shin, leg & tongue (7)
 20. What's in the ship "Escargot" (5)
 22. Had input into 18's development to a degree (5)
 23. Clive? He drove around in this (7)
 24. The most senior of the Bakersfield establishment (6)
- Down**
 1. Had nothing to do with robbin' – or did he as we speak? (6)
 2. Draws back the turf (5)
 3. The char, Nellie, worked in the house (7)
 5. Material used in any longline (5)
 6. Drag out fingerboard for burning (7)
 7. Menagerie Ian will come out of? (6)
 8. Miss by a whisker? (6,5)
 14. Got into gear but otherwise in use (7)
 15. It's served at the local? Oh! (7)



16. Hand grenade cad ejected inside ten years (6)
 17. Nonbelievers, Bernie goes out for books (6)
 19. Inventive designs encouraged initially as thought process (5)
 21. Ran cadre possibly (5)

SOLUTIONS



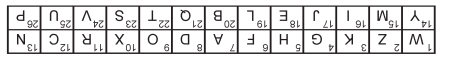
CROSSWORD

- Across:** 1. Fedora, 2. Euro, 3. Lard, 23. Nice, 4. Bogus, 21. Comp, 5. Tear, 19. Impose, 6. Flaccid, 17. Abide, 7. Exam, 14. Novelty, 8. Stern, 11. Irksome, 9. Supply, 7. Dated, 4. Afro, 5. Mere, 10. Supper, 29. Daemon, 11. Adieu, 27. Mar, 12. Cylinder, 25. Gigolo, 13. Impacable, 20. Blame, 16. Abrasively, 13. Enthroned, 15. Flood, 9. Astir, 12. Repent, 5. Masked, 8. Fee, 24. Federa, 25. Pictures of playground equipment (6)
- Down:** 2. Eian, 3. Oath, 1. Alcohol, 16. Decade, 17. Novels, 19. Ideas, 6. Bonfire, 7. Emerge, 8. Narrow shave, 14. Engaged, 1. Batmen, 2. Sward, 3. Chamel, 5. Nylon, 20. Cargo, 22. Angle, 23. Vehicle, 24. Eides, 25. Slides, 11. Add on, 12. Running, 13. Yellow pages, 18. English, 1. Bised, 4. Enable, 9. Tuatar, 10. Lance, 21. Raced.

CRYPTIC

- Across:** 1. Bised, 4. Enable, 9. Tuatar, 10. Lance, 11. Add on, 12. Running, 13. Yellow pages, 18. English, 20. Cargo, 22. Angle, 23. Vehicle, 24. Eides, 25. Slides, 1. Batmen, 2. Sward, 3. Chamel, 5. Nylon, 6. Bonfire, 7. Emerge, 8. Narrow shave, 14. Engaged, 15. Alcohol, 16. Decade, 17. Novels, 19. Ideas, 21. Raced.

DECODER



Husqvarna

Power and performance

SAVE \$750

TS142T
 42" Deck, Hydrostatic Transmission, 25hp Husqvarna Series V-Twin Engine

\$6,240
 \$6,990 RRP

Limited numbers
SPRING SPECIAL

SAVE \$1000

\$6,990
 \$7,990 RRP

Offers valid while stocks last.

TS142TXD
 42" cut, V-Twin Kawasaki engine, pedal operated hydrostatic transmission, auto locking differential.

Q CARD

24 MONTHS INTEREST FREE*

LONG TERM FINANCE

*24 months interest free is available on Long Term Finance (LTF) for in-store purchases only until 31/12/2024. Min spend \$3,490. Lending criteria, \$50 annual Account Fee, fees Ts&Cs apply. \$55 Establishment Fee applies to your first LTF transaction, \$35 Advance Fee applies to subsequent LTF transactions. Min payments of 3% of the monthly closing balance or \$10 (whichever is greater) are required throughout interest free period. Paying only the minimum monthly payments will not fully repay the loan before the end of the interest free period. Q Mastercard or Q Card Standard Interest Rate (28.95% p.a.) applies at the end of LTF Interest Free Period. Rates and fees subject to change. Columbus Financial Services Limited and Consumer Finance Limited reserve the right to amend, suspend or terminate the offer and these Ts&Cs at any time without notice. Valid 01/09/2024 - 31/12/2024.

PRESCOTTS GARAGES SINCE 1972

Shaun Prescott, Sales Manager
 021 285 4870 / 07 864 7801
 1 Hikuai Settlement Road, Hikuai
 www.prescottsgarages.co.nz

CARE

5 YEAR DOMESTIC WARRANTY*
 # Terms and Conditions apply, see HUSQVARNA.COM for details.

We sell and service Husqvarna's huge range of product. We also demonstrate and deliver.

Visit husqvarna.com today