

PARADISE COAST

Whangamatā

ISSUE 128 - 25 OCTOBER, 2024

NEWS

FREE COPY
PLEASE TAKE ONE!



Earthwatch Protest P21

Whangamata Mining Fast Tracked



Photo by Stuart Attwood Photography



BY LOCALS, FOR LOCALS, ABOUT LOCALS.

WE WELCOME YOUR CONTRIBUTIONS!

EMAIL WHANGAMATANNEWS@GMAIL.COM • FACEBOOK @WHANGANNEWS

Taken home by bach owners and visitors to everywhere

SEE ALL OUR EDITIONS LIVE AT WWW.WHANGAMATANNEWS.NZ

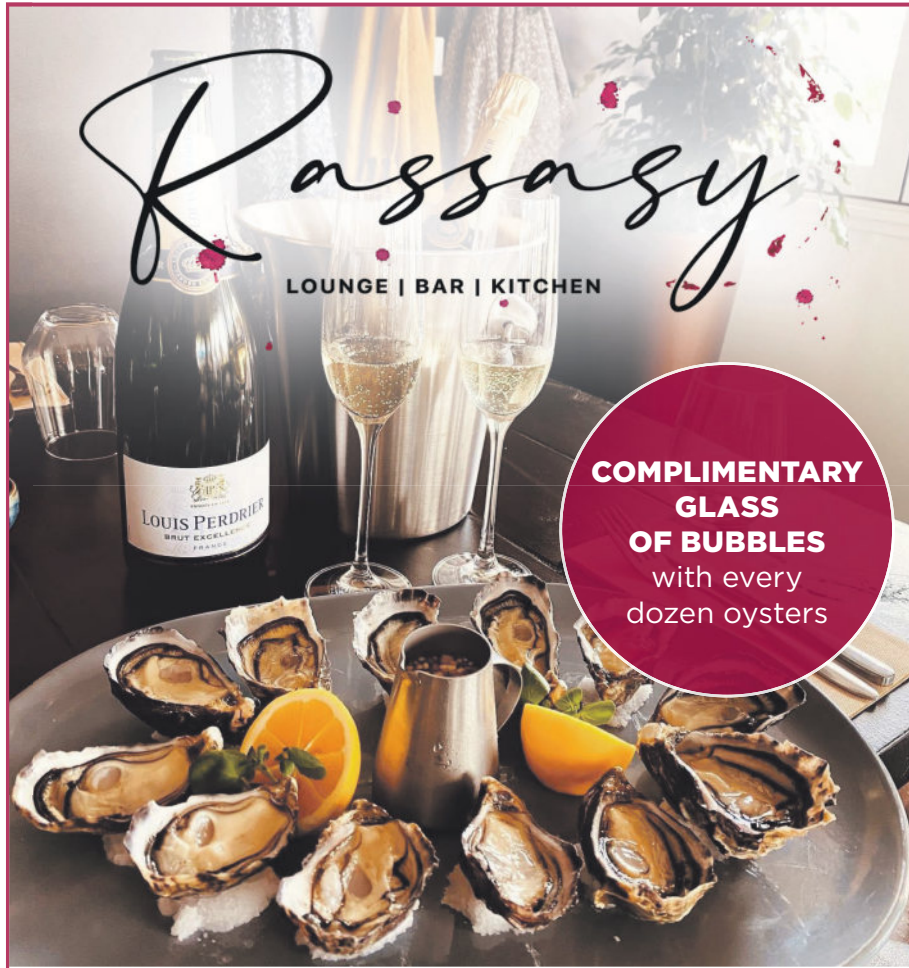
EDITORIAL & MEDIA SALES:

JENNIE BLACK - 021 0232 1661

DELIVERED TO WAIHI, WHIRITOA, WHANGAMATĀ, ONEMANA, HIKUAI, PAUANUI & TAIRUA

Welcome to the 2024 Labour Weekend edition of Whangamatā News

- a magazine By Locals, For Locals, About Locals



\$15 Selected lunchtime Tapas (12pm to 5pm)
\$12 Pornstar Martinis (12pm to 5pm)

OPEN LABOUR WEEKEND

Friday 5pm to late, Saturday & Sunday 12pm to late

Reserve your table now:
reservations@rassy.co.nz
07 2803945 • 501 PORT ROAD, WHANGAMATA
(Corner of Port & Lincoln St)

Applications open for DOC's Community Fund

A \$9.2 million fund to assist community conservation groups is an opportunity for local conservationists to apply for support to enhance biodiversity in our region, says National MP for Coromandel Scott Simpson.

"Conservation Minister Tama Potaka has announced applications for the Department of Conservation's Community Fund have opened for community-led conservation projects that protect New Zealand's unique wildlife and places."

"Our region has a proud tradition of conservation. Across the Coromandel, Hauraki and Western Bay of Plenty there are hard-working and passionate people doing their bit to protect and revitalise our natural environments."

"These groups and individuals play an essential role in protecting native species and their habitats. I encourage our local conservation groups to apply for support through

the DOC Community Fund."

Projects must meet all the eligibility criteria listed below:

Your project is focused on protecting and restoring threatened species and / or ecosystems.

The project is community-led, for example, led by whānau, hapū, iwi, community conservation groups, not-for-profit organisations or umbrella groups.

Government departments and local authorities cannot apply.

You are seeking funding for up to 3 years.

You are applying for a minimum of \$150,000, excluding GST. For example, \$50,000 per year.

Applications for the Community Fund close on 28 November 2024 and successful applications will be announced from late March 2025.

- Authorised by Scott Simpson, Parliament Buildings, Wellington

Scott Simpson MP for Coromandel

Contact me anytime

0800 550 330 • scottsimpson.co.nz
mpcoromandel@parliament.govt.nz
f [scottsimpsonmp](https://www.facebook.com/scottsimpsonmp)

National 
Authorised by Scott Simpson, Parliament Buildings, Wellington.



WHANGAMATA SURF LIFE SAVING CLUB (INC)



Project Transform

www.projecttransformslsc.co.nz



We need your help with Donations
to revitalise the Whangamata Surf Life Saving Club Clubrooms

Direct Bank Donations
BNZ Whangamata Surf Life Saving Club
(Inc) Building, 021-2540027806-010

Scan to Donate:





Power play

I would like to applaud both Richard Brown and John Lipscombe for their opposing contributions in your two previous letter pages. My own reasoning swings to the left but I do like to fact check whenever possible. At this moment we are witnessing the final run in for the American presidency. My question is, how could so many people, and not only Americans, still favour Trump? Recently I have been party to several political discussions when judgements have even been based on ethnicity. A typical Trump refrain would be "like you have never seen before" whilst privately uttering "Frankly I don't give a damn".

John Norris

The facts are clear

Conspiracy theories must always be confronted and hopefully the facts will stop more people falling down the rabbit holes. Firstly, there is no secret elite of liberals/

socialists who wish to impose world government on us. The UN, WHO and the World Economic Forum are not a threat to anybody. The right wing have always relied on creating fear from some threat or other, be it immigrants or criminals or some secret elite that is going to "exert more control over us" and is going "to track our every move".

If you push these ideas then you should expect that people will point out that Nazis believed in the same idea, that the world was controlled by a secret elite and that strong nation states needed to strongly oppose it. Another example would be when Trump talks about "poisoning the blood", and this too has a direct link to Hitler's use of this imagery.

The second conspiracy theory that has surfaced recently is the idea that tens of thousands of scientists have all been corrupted and paid off by some secret paymaster. This idea, as well as being really insulting to these highly educated people, shows a complete lack of understanding about the scientific method. Scientists collect evidence

and from this evidence they put forward a theory. If glaciers are shrinking, if there are far more extreme weather events and the climate is changing then they examine man's role in this process.

The facts are clear, man made climate change is a massive threat to the planet and if we don't change then our children will have to deal with some horrific consequences.

John Lipscombe
WHANGAMATA

Natural changes

Having read the letters by John Lipscombe (Issue 125) and the earlier letter, from Bernard Payne, it is pleasing to see a rational view on climate change from Richard Brown (Issue 127) particularly that "various government's controls have made no impact on the climate to date" and have been detrimental to the welfare of their citizens.

My opinion, for what it's worth, is that Nature has its own agenda.

Do those obsessed with what they consider to be man-made climate change, know anything about natural climate change.

This encompasses a great deal, including volcanic & sunspot activity; thermohaline ocean circulation; Heinrich events, (when icebergs break from glaciers); the Dansgaard-Oeschger rapid climate fluctuations; changes in the concentrations of the greenhouse gases of methane & carbon dioxide in millennial timescales - and bursts of cosmic rays.

Then there are the Milankovitch astronomical cycles of the Earth's orbits around the sun, which have over the past 2.5 million years caused massive temperature oscillations.

After considering all those, I agree with Richard that man's influence on climate change is relatively insignificant and all the rules & regulations being made are detrimental to our welfare.

Mike Ellis
WHANGAMATA

Victoria's Closet

Quality labelled pre-loved, new & near-new clothing, shoes & handbags

AFFORDABLE PRICES

\$20 OFF all clothing \$30 and over!

Open Friday to Monday from 10am
Ph 0274 989 360 · Port Rd, Next to Whangamata Pharmacy



SASKIA & CO

Beautiful People come to Saskia & Co

A little bit of nostalgia – long hair styling was particularly popular in the 1960's. The '60s saw many iconic hairstyles like beehive and long flowing locks. It's fascinating how trends influence salons.

Just like my parents Wayne and Katrina, we celebrate beauty in every style – whether long, short, or anything in between!

Featuring: Expert styling, personalised consultations, and a welcoming atmosphere.

Join us at Saskia & Co for the latest trends and timeless classics.

Open Monday to Saturday 9am to 5.30pm and Thursday and Friday till 8pm via appointment. Phone Saskia on 021 045 1236 or 07 865 8872.



Come see how history repeats in our era!





NEW OWNERSHIP
OPEN MON - SAT
7AM - 7PM

Incredible takeaways - fish & chips, burgers, hot dogs - the lot! Takeaways from 2pm.

Phone 021 100 8535



ENTERPRISE
WHANGAMATĀ
PARADISE COAST

Supporting our Business Members
Labour Weekend Eating/Dining Options

Coromandel Chocolate - 100 Hunt Road
Call: 027 353-3401

Crafthaus - 711 Port Road
Call: 07 865-6300

Luv Coffee - 701 Port Road
Call: 07 865-7377

Salt District Brewing - 102b Winifred Ave
Cellar Door open Thursday to Sunday 12 - 5.30pm

Smash Pipi - 603 Port Road
Call: 07 865-6562

Smoky Pallet - 427 Port Road
Call: 07 865-9050

The Whangamata Club - 404 Port Road
Call: 07 865-9705

Don't be disappointed - Bookings Essential

Police report



Good day, neighbours. William is on annual leave, so I have been asked to write this latest article for your perusal.

Our busy summer period is rapidly approaching, and we will all be adjusting to the increased population. May I suggest you use this as a reminder to adjust your security measures.

Let's start with the basics by locking up when we leave home and not leaving our keys in the ignition when we pop in to buy a pie. If you want to go the extra mile then why not ask Santa for a couple of CCTV cameras? They are the gold standard for us when it comes to prosecution time.

A golden nugget to take away from a recent chat I had with a burglar. They told me that the best places to find a spare key happen to be inside the bbq or under the door mat. Might be time to change where you keep yours so old mate

can't get in.

If you have young people in your family, then please help us by having a chat with them over the following. Last school holidays, we have had complaints about anti-social behaviour around the library, so if your family are using this space to congregate, behaving friendly is best for everyone. Knocking on people's doors and running away may be funny to the group doing it but I can tell you about the person on the other side of the door can get quite scared.

Lastly, if you own 50cc scooter, or similar, a licence and helmet are required.

We are lucky to live in a lovely and safe town. Together we have a responsibility to keep it that way.

Be kind and enjoy time with your family and friends.

*- Jack Driver, Acting Sergeant,
Whangamata Police*



Smart Buy furniture afterpay

Rugs	DID YOU KNOW?	Bunk Beds
Cusions		Giftware
Recliners	 <p>Leather Was \$2495 Now \$1995</p> <p>Angelo</p>  <p>Alfredo</p>  <p>Fabric Was \$1995 Now \$1485</p> <p>Kasai</p>	Dining
Entertainment units		Bedroom Furniture
Sleepyhead Beds		NZ Made Lounge Suites
Pillows		Mirrors
Barstools	WE'RE MORE THAN JUST BEDS Discover everything we have to offer!	Sofa Beds
Throws		Bean Bags
Manchester		Outdoor Furniture

Inside the BEDS R US WAIHI
94 Seddon Street, Waihi,
07 863 8787



Inside the BEDS R US WHANGAMATA
419 Port Road, Whangamata,
07 865 9027

Croquet celebrates milestone

Celebrating a remarkable milestone for the Whangamata Croquet Club – 50 years of being a cornerstone of this community. Deputy Mayor, Terry Walker gave a warm welcome to the Club President, members, and invited guests. He told the crowd " this is not just a celebration of longevity, but of the spirit of community, camaraderie, and well-being that this club has brought to Whangamata over the years."

"Though my personal history of the club may be limited, and we all know about the toilet block drama, but one highlight stands out: in 1989, Council provided a

5,000-gallon concrete water tank for the maintenance of the greens. Remarkably, that tank is still here today – a small symbol of how important investments like this have been in sustaining the club's future."

Walker wanted to acknowledge the vital role this club plays, not just in the lives of its members, but in enriching the broader community. Clubs like this one provide much more than recreation – they offer a space for connection, for health and well-being, for enjoyment. "That's why I've been proud to advocate for initiatives that ensure they remain strong. In 2021, he introduced "The Club Package" support fund,

designed to assist clubs where committees were feeling the burden of managing finances, IT, and minutes – tasks that were becoming difficult for some to continue. By lightening that load, it aimed to ensure clubs like this one can focus on what they do best: bringing people together.


"Congratulations to the

Whangamata Croquet Club for reaching 50 years. May you, the members, continue to nurture this club so that future generations will enjoy the same sense of fellowship and community that has flourished here for five decades."

Here's to many more years of success!



From left: Pat Finn (President), Terry Walker & Jo Schneeбели (life member).





Whangamata Lions

Monster BOOK SALE

LABOUR WEEKEND

**Saturday 26th &
Sunday 27th October**

9am - 2pm

**Anglican Church, Cornerstone House,
101 Ocean Road, Whangamata**

Conservation an excuse to exclude public fishing

Tripling the area where public fishing is excluded within the Hauraki Gulf Marine Park, while permitting Māori customary and commercial fishing is a gross insult to everyone who has worked hard to conserve fish over the past few decades, according to public fishing interests group, LegaSea.

“The last-minute change to the Hauraki Gulf Marine Protection Bill to allow commercial fishing to continue just demonstrates again what the public are up against when trying to protect their interests in taking a kid fishing,” says LegaSea Project Lead Sam Woolford.

“It’s bizarre to have a Marine Park that was set aside 24 years ago to benefit the people of the Gulf, and now we have officials and others colluding to deny us access to our food basket in the middle of a cost-of-living crisis.”

Contrary to statements from the Minister of Conservation, Hon Tama Potaka, amateur fishers say these late amendments to the Bill will not make any measurable difference to the health of the Marine Park.

The New Zealand Sport Fishing Council has been involved in the Sea



Change process since 2013, trying to find common solutions to restoring the abundance of fish and marine

diversity of the Hauraki Gulf. The agreed Sea Change report included a mix of fisheries management and

marine protection measures.

Bill McGarry is the local representative for the Council and secretary of the Outboard Boating Club, the largest in Auckland. Bill presented their collective views to the Environment Select Committee hearings in March this year. He believes this latest outcome is a travesty.

“If we had a functioning quota management system there would be no need to close off large fishing areas to protect biodiversity.

“Fisheries New Zealand has not operated in good faith with respect to public fishing; it’s as if their only constituency is fishing quota holders. The public has consistently offered up conservation measures to protect sea life in the Marine Park. This latest move by officials and the government is a slap in the face for democracy.”

- Fisheries Management & Communications



Have you visited your local brewery yet?

Or have you had a tasty Salt District beer at Craffhaus and you'd like to take some home or see where it's made?

We are located down the service lane behind Whanga Bar & Café at 101B Winifred Ave. ON TAP ALL LONG WEEKEND IPA, Pale Ale, Pilsner and Hazy Cans from \$10 including Coromandel Chocolate Stout

We are passionate about Craft beer and our fantastic community.
Pop in for a chat/sample and keep a lookout for events coming up this summer!

www.saltdistrictbrewing.co.nz @saltdistrict_brewing

Join us for Whangamata Lunch en Blanc
Saturday 15 February 2025
12-4pm
Location - well that is a well kept secret, until the day

The idea all started with a simple desire to meet friends and share each others company, back in 1988 in Paris..

All you need to do is gather your friends, put the date in your diary and scan the QR code to register

Numbers are strictly limited, \$40 per person
BYO Picnic Lunch & Beverages
Supporting Whangamata Surf Life Saving Club

HELP US TO HELP YOU. BECOME A MEMBER. www.whangamata.org.nz

Coromandel scallop dredging horrifies locals

Coromandel locals are horrified that Fisheries New Zealand is currently dragging a destructive industrial dredge through the local scallop fishery that has been closed due to depletion since March 2023.

“There has been overwhelming community support for the closure of the local Coromandel fishery because scallop numbers were the lowest we’d ever seen. After all the community’s conservation efforts over the past four years it’s unacceptable for Fisheries New Zealand to be using a dredge, especially given the risk of spreading the invasive seaweed *Caulerpa* throughout Coromandel waters. It’s not okay,” says Opito Bay Ratepayers Association Chairperson Chris Severne.

Until the fishery was closed, commercial fishers had used the Victorian Box Dredge for decades, causing depletion and damage to vital habitat that supports other sea creatures.

In May a multi-stakeholder working group chaired by Fisheries New Zealand agreed that a non-contact camera survey was acceptable given that the waters off East Northland, Hauraki Gulf, Coromandel and Bay of Plenty were all closed because there are not enough scallops to sustain commercial and recreational harvest.

Results of Fisheries New Zealand’s



studies over the past three years show that a dredge survey is only 70 percent efficient compared to camera-diver surveys which are 100 percent efficient. NIWA has just finished using cameras to survey the local Coromandel beds and found very few scallops.

“It’s dredging that has brought us to this point of depletion so it’s encouraging that the camera surveys that have been developed over the past couple of years are so efficient and less damaging. It’s unthinkable that anyone is considering using a dredge to find scallops that are clearly not there,” says Tairua-Pauanui Sports Fishing Club President Warren Maher.

In 2020 the Fishing Club, Ngāti

Hei, the Opito Bay Ratepayers Association, LegaSea, New Zealand Sport Fishing Council, New Zealand Underwater Association, and representatives from other Coromandel communities formed the Coromandel Scallop Restoration Team with the aim of restoring and sustaining scallop populations in local waters.

The Restoration Team commissioned a dive survey supported by local retailer Dive Zone Whitianga. Warren Maher, Team member and dive survey leader, was shocked by the survey results. At the time he relayed concerns from the divers about the damage caused by dredges and the low numbers of small scallops.

Project Lead Sam Woolford says LegaSea was one of many groups in 2021 calling on the Minister to reduce catches or buy out the quota in the Coromandel scallop fishery. He said it is very frustrating that officials are once again bowing down to commercial interests when they challenge the results of peer reviewed studies.

“The Coromandel area was the last commercial scallop fishery left in New Zealand, reduced from a highly successful fleet of 23, down to just four vessels. The results from the camera survey are clear. Dredging is not a successful or sustainable strategy. We need a buy-out so we can rebuild scallop numbers to a viable level, then when the fishery reopens, only permit low impact fishing techniques and seasonal closures.

“No problem was ever solved in the same consciousness that created it. A dredging survey now doesn’t make sense. The Minister must intervene and put a stop to any dredge survey, to ensure we have a high value scallop fishery in the future.”

- Mike Plant, Lead, New Zealand Sport Fishing Council Inc





Join Us AT THE WHANGAMATA CLUB




LABOUR WEEKEND ENTERTAINMENT



The Whangamata Club Presents

Gerry Lee

New Zealand's Premier Rock n Roll Pianist

Sunday 27TH October

from 6:30pm

THE WHANGAMATA CLUB SMOOTH & GROOVE PRODUCTIONS



2ND NOVEMBER

SATURDAY

Night

6-30PM START

* The Duke * Six W * Mark Williams * Herbs * Netherworld Dancing Toys * KC And The Sunshine Band

* Hello Sailor * Dragon * D-D Smash * Tim Finn * LAB * Kool And The Gang

* KIWIS CLASICS * REGGAE VIBES * PARTY HITS * OLD SCHOOL *

404 PORT RD, WHANGAMATA 07 865 8705

MEMBER PROMO

FASHION IN THE FIELD PRIZES PRE AND POST RACE PLATTERS COMPLIMENTARY GLASS OF BUBBLES BEFORE 4PM



Fashion in the Field

Best Hat Best Dressed Best Dressed Couple

TUES NOV 5 FROM 2PM

MELBOURNE CUP DAY

EXPERIENCE THE THRILL OF THE RACE! LIVE AND LOUD ON THE BIG SCREEN



BISTRO

Monday - Friday from 3pm
Saturday & Sunday from 12pm

DINNER MENU

From 5pm daily

RESTAURANT

Friday to Sunday from 5:30pm

404 PORT ROAD

FACEBOOK.COM/THEWHANGACLUB
WWW.WHANGAMATACLUB.CO.NZ
P. 07 865 8705



Freestyle Hair Design

Now stocking Davroe professional hair care products formulated from top quality natural ingredients leading the market in product performance innovation ethically and sustainability.
Sulphate and paraben free 100% vegan friendly.

My Services
My extensive training in haircutting, specialises in difficult hair and precise haircuts, cut to the head shape and creating long lasting sharp women's hair styles.

Follow my facebook page **Freestyle Hair Design** for upcoming product launch specials just in time for Christmas!

My boutique home-based salon creates a relaxed, comfortable and an inviting environment to make everyone feel pampered!

EMBRACE YOUR BEAUTY

Contact via call or txt 021 078 4941

MASTERCRAFT KITCHENS

NKBA

Kitchens • Laundries • Vanities • Wall Units • Wardrobes • Offices • BBQ Areas
COME IN AND SEE US AT OUR DESIGN STUDIO
108 Lindsay Rd, Whangamata 07 865 7947 www.mastercraft.co.nz

Love your view

fairview
EXCEPTIONAL WINDOWS & DOORS
WHANGAMATA
07 865 8919
www.fairviewwhangamata.nz

Adventure, growth, and connection

Now in its fourth year, the Tōku Ara programme is a vital part of the Whangamata Area School Year 10 student's educational journey. This year, they welcomed 23 boys onto Wharekawa Lodge with a beautiful Mihi Whakataū, kicking off their transformative four-week adventure.

The boys have settled into a full schedule, starting their days at 6:15 a.m. with a 3 km run or a hike up Maungaruawahine to watch the sunrise. Their routines include duties like cleaning, cooking, laundry, and maintaining the grounds, and they've embraced challenges such



as tug-of-war, the inca rope, and outdoor electives like fishing, bivvy-making, and whittling.

The boys have been enjoying outdoor pursuits, learning kayak 1 skills and paddleboarding. In week two, they'll kayak to Hauturu Island and learn about the history of Ngāti Pū from Mana Whenua, Errol Gilbert. They'll also camp for two nights at Wentworth and tramp from Wentworth valley to Parakiwai, adding navigation and map reading skills to their experience.

In addition to these activities, the boys are learning haka, waiata,

and karakia, deepening their connection to Te Ao Māori. Through their specially designed learning journals, they reflect on emotional management, identity, gratitude, wellbeing and connection.

The Toku Ara staff feel incredibly privileged to spend these weeks with the Year 10 students, guiding them through this very special programme. With three weeks to go, they are eagerly anticipating the boys Graduation ceremony on November 7th before welcoming the Year 10 girls on 10 November.

- Gina Kennings

ULTIMATE KIWI BACKYARD SPA & WEBER BBQ COMBO

mSpa

weber SPECIALIST DEALER



FROM ONLY
\$1,999!



Weber Family Q 3200N BBQ
bundled with the M Spa Mono 6
Hot Deal \$2,999 SAVE \$1299



Weber Family Q 3200 N BBQ
bundled with the Tekapo M Spa
Hot Deal \$1,999 SAVE \$799

**100%
HOME**

PHONE 07 865 9458 | PORT ROAD
WHANGAMATA

OPEN 7 DAYS
Mon-Fri 9am-5pm
Sat 9am-3pm
Sun 10am-2pm

Whangamata Garden Club goes potty

On 15 October, the garden club ladies excelled themselves with their beautiful, decorated pots and great array of entries in the

monthly competitions. Much thought and ingenuity was evident in the entries and the judges had a difficult task deciding winners.



The winning ladies were...

Small pots: 1st Sue Budenseik, 2nd Judy McClintock, 3rd Jacqui Clarke.

Medium pots: 1st Glennis Brew, 2nd Margaret Dickie, 3rd equal Jennifer Lawton and Yvonne Bartlett.

Large pots: 1st Liz Claridge, 2nd Dianne Trembath.

Well done, ladies, and congratulations to all the entrants. Every pot was beautiful.

The next meeting is on Tuesday, 18 November. The annual Spring Fling will be very busy and fun, with the annual Rose Show, Spud Growing competition and Spring Hats to be competed for. Do come along, wear your pretty hats and join the fun.

- Jan Collins



NEW to Whangamata

Come on in store and meet Vicki and her crew for a great food experience!



So much on offer with incredible Italian sub sandwiches with focaccia bread, Delicatessen meats and cheeses from Italy and other Italian grocery items, fresh volare loaves, fantastic smoothies made from scratch, the best ever Kettle popcorn being gluten and dairy free and of course coffee, hot chocolate and chai latte to accompany the perfect lunch.



OPEN
Wednesday to Monday
from 8am

Port Road
(formerly Foodie Pantry)

Phone Vicki
021 0247 2940

FLOORINGXTRA.CO.NZ



FLOORING TO SUIT YOUR STYLE

CARPET • VINYL • TIMBER • LAMINATE • RUGS

Phone or email us! We're measuring & laying! View samples instore!

WHANGAMATA
FLOORING XTRA

Whangamata | 636 Port Road | 07 865 8562 | whangamata@flooringxtra.co.nz

SMOKY PALLET

FREEHOUSE



\$20 PIZZA & JUG

With live Music

EVERY FRIDAY 4PM-6PM

@Smokypalletwhanga
 @Smokypallet

Great news for Whangamata beach-goers

Toes in the Water beach wheelchairs will be available again from Labour Weekend.

The beach matting will be going back down on 23 November this is to try and avoid the last of

the spring storms. The matting enables safe, accessible entry onto our beach via the boardwalk for everyone including wheelchairs, walkers, runners, pushchairs, and lightweight beach carts.

Derek will be there again this summer to keep the boardwalk and matting clear throughout the summer season. This will continue

to make Whangamata Beach now a more inclusive location for all to get their Toes in the Water!

You can book a beach wheelchair or walker at toesinthewater.co.nz. Text or call 021 0885 8939.

Toes in the Water is now also available in Whitianga. Text or call 020 434 1647.



Valid 1st Aug - 30th Sep 2024

FREE windoware MOTORISATION

AUGUST/SEPTEMBER 2024 | MIKRONWOOD, ROLLER & HONEYCOMB BLINDS



www.windoware.co.nz

Terms & Conditions Apply



Tara King
INTERIOR DESIGN
www.taraking.co.nz

✉ studio@taraking.co.nz
☎ 0210391086
f @tarakinginteriors
i tarakinginteriors




Whangamata SERVICE CENTRE

Full Mechanical Repairs, Lubrications and Services, WOFs, Tyres, Tune ups, Batteries, Wheel alignments, Diagnostics.

Scan Tool.
AA Breakdown services
First Assistance Breakdown services




P. 07 865 9435 • 201 Aickin Road, Whangamata
M. 027 608 5770 • E. wgmisc@xtra.co.nz

NEW CO-LOCATED STORE NOW OPEN!

Come visit us at our co-located Carpet Court & CurtainStudio store

217 Pollen Street, Thames | 07 777 4994

Open Mon - Fri 8:30am - 5:00pm, Sat 8:30am - 2:00pm

Carpet | Vinyl | Wood | Rugs | Curtains | Blinds | Tracks | Accessories

* Offers are valid until 31/10/24. Terms and conditions apply. See instore or online for full details.

STOREWIDE SALE

50% OFF

Making & Lining on All Studio Custom Lined Curtains*

50% OFF

All Studio Custom Blinds*



CurtainStudio

Massive Madness flooring SALE

10% to 50% OFF Selected Flooring*

35% OFF Rhino Hardfloor*



 **carpetcourt**

Arrows away!

The Clubs NZ Area Champs were held at the Whangamata Club on 11-12 October.

"I would like to extend my heartfelt gratitude to our host club, Whangamata, particularly Karen, Ray and their team. We truly appreciate the effort you all invested to ensure a memorable weekend."
- Thames Valley, Waikato, Bay of Plenty Clubs

Another successful tournament saw 140 players across the weekend compete keenly daily with the goal of being selected for inclusion in the Area Rep team to compete against other Area teams at the

North Island Champs Upper Hutt next February 2025.

Results:

LADIES PAIRS

Consolation Winners: Lyn Vaughn and Pauline Brooker.
Main Round Winners: Crystal Walters and Corrina Walters.



Runners-up: Shinaye Apapa and Zoe Skayman.

MEN'S PAIRS

Consolation Winners: Peter Ward and Mai Jonathon.
Main Round Winners: Josh Roberts and Mark Cleaver.
Runners-up: Alan McNeill and Richard Taylor.

LADIES' SINGLES

Consolation Winner: Averil Boon.
Main Round Winner: Bianca Ormsby.
Runner-Up: Crystal Walters.
Third Equal: Angie Harris and Connie Dick.

MEN'S SINGLES

Consolation Winner: Lloyd Cole.
Main Round Winner: Josh Roberts.
Runner-up: Sam Brown.
Third Equal: Paul Boot and Butch Pourau.

YOUTH

Winner: Aliko Quinn-Suaesi.
Runner-Up: Cameron Walsh.

JUNIOR

Winner: Mikaele Quinn-Suaesi.
Runner-up: Preston Wheeler.

TV/WAI/BOP 2025 AREA TEAM:

Bianca Ormsby, Crystal Walters, Daphne Walters, Angie Harris, KT Barnes, Josh Roberts, Mark Cleaver, Sam Brown, Paul Boot, Rodney Moreland. Manager: Paul Steventon.



At the AGM held on Saturday 12 October, the Whangamata Club was successfully awarded the Area Champs for a record fourth straight year in 2025 directly attributable

to the dedication and co-operation of all club staff and Darts members over the weekend.

- Photos by Mark James

Whangamata - the golf town

There are not many small towns in New Zealand that can boast having 27 holes of golf. The Titoki Course and the Williamson combine perfectly for this 'Golf Town'.

Williamson is the ideal course for learners and the time poor while Titoki is for those who have or want a bigger game.

This was one of the major attractions for local personalities the Wickham Brothers, James and Michael when they came to town.

They love their golf, and the two courses suit them both. "But our time is valuable and let's face it Whanga can often have average weather", said Michael. "...so we created another club for the town, The A Club, a golf simulator."

With access to the world's famous golf courses and cutting edge 2024 technology, the A Club will

not only improve your game you'll have a lot of fun doing it.

Initially, the golf simulator can be a little daunting for the tech wary, but if you can work a computer you can work this. Coaching and instruction is also available.

"We created this space to share with friends - people like us who just love and respect golf."

The A Club has an Open Day this Labour Weekend Sunday, 10am to 2pm. There's also the chance to win a \$1,000. The first hole in one on Pebble Beach's famous no. 7 on Sunday wins.

"James and I love being part of this town and our golf community. To be able to share what we believe is one of the best golf simulators in the country is something we're very proud of."

OPEN DAY

Sunday, October 27, Whangamata's A Club is opening its doors and inviting you to win a \$1,000 for a hole in one.

The A Club is a cutting edge golf simulator. Come learn how it works, play some of the world's best golf courses and take your shot at Pebble Beach's famous number 7 for \$1,000.

We have clubs and balls or bring your own.

Open Day
Sunday Oct 27, 10 to 2.
215 Aickin Road, Whangamata
- just past Bunnings.

Artful Insights



Arts Collective members travelled to the Whitianga Art Centre for an inspirational workshop with Peter Augustin, artist extraordinaire and gallery owner.

A talented artist and teacher of many mediums, Peter's humor and flowing style kept our group fully engaged and entertained for the last of our winter workshop series.



Labour Weekend Open Studios

Two well-known local artists are inviting you to visit their studios over the long weekend.

Sunday 27 October, 10am to 4pm and Monday 28 October, 10am to 12pm:

- Heather Watt - Kea iti Studio, 105 Kea Street, Whangamatā.
- Vicki Morris - 410 Ocean Road, Whangamatā.

A fun-family Christmas Fair at Opoutere is being planned for December 14th with all the bells and whistles for the festive season.

Stalls will be available contact

Sue on 0274 456 145.

The Harcourts Challenge premier event will once again be held from 24 to 26 January, 2025. The theme, The Senses, arises from the interaction between the external world and the human bodies sensory organs - these are sight, smell, taste or touch.

There is an artists' category and, for the first year in 2025, the new writers' section.

Calling all artists to let your imagination go wild and visit www.artscollective.co.nz to get the entry forms completed and your creations underway.

Come in and discuss your jewellery design or remake



Was \$6,973
Now **\$5,000**



Was \$3,995
Now **\$2,800**



**Nathan Steiner will be in store
Labour Weekend
Saturday from 9am to 3pm**

- He is a Manufacturer Jeweller and specialises in CAD Design
- Australasian Apprentice of the Year
- Official Jeweller for the Isle of Man TT MotoGP



Was \$15,275
Now **\$10,000**



Was \$4,940
Now **\$3,500**

Strictly Time

Rod Styles Watchmaker and Jewellers
640 Port Road, Whangamata | Phone 865 6477

Fashion-filled Sunday at Pauanui Village

Labour Weekend just got a whole lot more exciting! Head to Pauanui Village this Sunday, 27 October, for a Fashion Parade, proudly presented by a favourite local store, Hello Friday.

It's a great free community event that has become a regular feature on the calendar for Labour Weekend holiday-makers and locals alike.

Gather your friends and family and enjoy a relaxing morning out, explore the village before the Fashion Parade then grab a coffee to enjoy during the parade. Take in the latest summer trends as local models strut down the pavement, showcasing the new collections for women and men. Hello Friday boasts a great range of lifestyle clothing labels including BLAK, Coop & Curate by Trelise Cooper, Elm & Foxwood, Humidity, Knewe, Lee Rider, Loobies Story & Madly Sweetly, Minx Shoes, New Zealand made Nes, Skechers, Stella + Gemma, Staple the Label, Superdry, Tuesday Label, Vassalli and Zaket & Plover.

After a busy morning, and the opportunity to update your summer wardrobe with the latest must-haves, you'll be needing to



re-fuel - best you book ahead for lunch at one of the local cafés.

See you in Pauanui for the Fashion Parade!

For more information, follow Hello Friday on social media or visit their store in Pauanui Village or check out their website: hellofriday.nz

Fighting for the fish for future generations

Whangamatā News caught up with Barney O'Neill, who has just received his 15 year award for the Sport Fishing Council.

Barney is a delegate for the Te Aroha Angling Club. He is passionate about battling commercial fishing, where recreational fishing is being depleted.

Barney told us "It's about keeping fish in the ocean, they have all these trawl corridors here now, so what was the sense in setting up a reserve? The tarakihi beds used to be amazing here, now they are literally extinct, the bait fish are being sent to Australia for cray bait, it's got a lot more value leaving fish here in the water, for me it's about fighting for the fish for future generations".

Barney wants to encourage people, if you don't want to join a sports fishing club, maybe go look at Legasea website, they can give Legasea a donation and help fight the cause.

LegaSea is a non-profit organisation dedicated to restoring the abundance, biodiversity and health of New Zealand's marine environment: legasea.co.nz



What a warrior you are Barney. Congratulations on your well deserved award.

- Jennie Black

Fashion Parade

LABOUR WEEKEND
Sunday
27 October
11am

Hello Friday
Pauanui Village


The Little Gallery
TAIRUA & WHANGAMATA

497 Port Rd, next to Chill Café.
Open 10-3 all weekend including Monday.

All your favourite eats 2 go!


ORDER - PHONE - ONLINE - PICK UP - DELIVERY

CRAIG'S
TRADITIONAL FISH & CHIPS



WHANGAMATA

Fish and Chips
Burgers and Toasties
Fresh Fish Cabinet

Open Daily from 11am
Port Road **Ph 865 8717** 



KAFAL
INDIAN CUISINE

Dine-in, takeaway or delivery. Seating up to 70 people.
LUNCH COMBO \$15 for takeaway or dine-in
Order online: kafalindiancuisine.co.nz or menulog.co.nz
- all menus are available on website
OPEN 7 DAYS | 800 PORT ROAD | PHONE 07 865 8870



TURKISH MASTER KEBAB



Kebabs, iskender dishes, salads, meat with fries, baklava & turkish delight, vegan & gluten free options

OPEN SUN-THU 10:00AM-8PM • FRI & SAT 10:00AM-8.30PM

 **TURKISH MASTER KEBAB WHANGAMATA**




Whiritoa
GENERAL STORE & CAFE

NEW OWNERSHIP - OPEN MON - SAT 7AM - 7PM
Incredible takeaways - fish & chips, burgers, hot dogs - the lot! Takeaways from 2pm. Phone 021 100 8535



Real Fruit Ice Cream Cara Mela

ICE CREAM PARLOUR

Real fruit ice cream, crepes, sundaes, sweets & coffee. Lovely garden seating at rear of shop.
705 PORT ROAD

COROMANDEL CHOCOLATE.



Come in store for our Seasonal fruit bowl over Labour Weekend.
Fresh strawberries from Katikati and seasonal fruit covered with our delicious melted chocolate.



coromandelchocolate.co.nz
coromandelchocolate@outlook.com
Come in & meet Thomas & Jess!
027 353 3401

Closed Tuesday & Wednesday
Open Thursday to Monday 9am - 5pm
100 Hunt Road - beside The Chiropractor & across from Liquorland

Ying's @ the RSA
is open for
THAI CUISINE & EUROPEAN FOOD



OPEN 6 DAYS: TUESDAY TO SUNDAY
Open 11am to 3pm for lunch • Open 5pm to 8.30pm for dinners
Friday & Saturday open til late • Takeaway orders 07 865 9419 #4



WHANGAMATĀ
OPEN FRI & SAT TO 9PM
Large pizzas from **\$13**

Free delivery for our online deals

pizzaplazawhangamata.booknorder.co.nz
or **phone 07 865 8306**
427 Port Road, Whangamatā



MEAT AT THE BEACH

- Specialty Cuts • NZ Home Grown Meat only
- In-Store made Sausages • Home Kill Service

Enquire Instore about Smoking Game Fish
Home of Whanga Bacon, Whanga Black Pudding & Ham on the Bone!

601 PORT ROAD, WHANGAMATA P. 07 865 7241
MON - FRI 8.30AM-5PM • SATURDAYS FROM 8.30AM



CHILLI COVE
REDEFINING INDIAN FLAVOURS

\$20 LUNCH SPECIAL
OPEN 7 DAYS Mon to Wed 4pm-10pm
Thu to Sun 11am-2pm & 4pm-10pm
Dine in, takeaways and deliveries
Vegan & gluten-free options available
Visit us at www.chillicove.co.nz

Phone orders 07 865 6860 | 608C Port Rd, Whangamata
Follow us on Facebook & Instagram - your feedback means a lot to us!

Whangamatā NEWS



By Locals, For Locals,
About Locals!
Home delivered.

Whangamata Library busy in the holidays



Whangamata Library has just run their very first holiday program, from 30 September to 4 October, and it was a great success. Over 30 kids and their parents/grandparents showed up each day.

On Monday, they held a Lego Club where each child was challenged to create a creature. We bestowed Chris Brown from the Whangamatā Lions Club the impossible job of judging the best creation in which he deemed Bodhi and Blake the winners with their 'Kings Cross' dragon creature and fortress.

Whangamatā Lions Club have kindly sponsored us to be able run our 'Lego Club' that will start up next

term Tuesdays 3-4pm, which we are very excited about.

On the Wednesday they held a sock puppet craft session which saw all types of interpretations of sock puppets including many a unicorn and even a sock puppy or two.

The Friday saw a macramé lesson with local crafty legend Cherry Escort. Each child walked away with a beautiful macramé leaf and a new found skill.

Always popular, they had story time with John on the Tuesday and Thursday, which proved very entertaining with lots of giggles and theatrics emerging from the children's corner.



Whatever the site, we'll help you create the perfect home.

Jennian

HOMES

614 Port Rd, Whangamatā E: coromandel@jennian.co.nz P: 07 865 6767



Our Coromandel

News from Thames-Coromandel District Council



25 October 2024

Whangamatā stormwater flood modelling now available

Our Council has modelled stormwater flooding in Whangamatā to inform infrastructure improvements and help property owners manage risks.

\$9.2M has been allocated in the 2024-34 Long Term Plan for stormwater mitigation over the next six years. A digital map with the flood modelling and FAQs is available at tcdc.govt.nz/whangamatastormwater

The model uses NIWA data, showing areas affected by a 1-in-100-year flood. The information provided by the flood model allows us to understand geographic areas that are likely to be affected by this type of flooding and associated risks. It also helps our community to be better prepared and become more resilient to potential future flooding events.

Our Whangamatā property owners will receive a letter soon and we're holding drop-in sessions for property owners to speak to staff to get more detailed information.

Drop-in sessions: Whangamatā TCDC, 620 Port Road:

- Wednesday 6 November, 10am-2pm
- Monday 11 November, 10am-1pm
- Friday 15 November, 3-6pm
- Tuesday 19 November, 10am-1pm

Submit an RFS at tcdc.govt.nz/rfs or email customer.services@tcdc.govt.nz with any questions.

**GET READY:
EMERGENCY PREPAREDNESS
WORKSHOPS FOR OUR
COMMUNITY**

AGE CONCERN Hauraki Coromandel
THAMES-COROMANDEL DISTRICT COUNCIL

**WEDNESDAY 20 NOVEMBER:
WHANGAMATĀ, 9:30AM**
(VENUE TBC)

Our Council has partnered with Age Concern Hauraki Coromandel to offer Emergency preparedness workshops.

The workshops held so far have had a great turnout. This initiative aims to educate and support older persons on emergency preparedness and identifies the steps to developing their own emergency plan.

These helpful sessions cover important topics like understanding hazards, how to stay informed and personal preparedness. Participants work through the contents of an emergency plan and how to prepare your own plan.

HAURAKI OPPORTUNITY SURVEY TUKUA TŌ REO KIA RERE | LET YOUR VOICE FLY

If you live, work, or play in the Thames-Coromandel, Hauraki, or Matamata-Piako areas, we want to hear from you about what matters most, to help our community groups and our Council make decisions that matter.

The first 2,000 people to complete the survey will go into the draw to win one of 80 gift cards valued at \$25 each – one in every 25 wins.

Scan this QR code to complete the survey now.



THAMES-COROMANDEL

FUNDRAISING WORKSHOPS

ACQUIRE SKILLS AND INSIGHTS FROM JENNI GIBLIN AT FUNDING HQ ON HOW TO ACCESS AND SECURE FUNDING FOR YOUR GROUP OR ORGANISATION.

THAMES - 4 NOVEMBER **WHITIANGA - 6 NOVEMBER**
COROMANDEL TOWN - 5 NOVEMBER **WHANGAMATĀ - 7 NOVEMBER**

FUNDRAISING WORKSHOPS WITH FUNDING HQ

TCDC Whangamatā Community Board Room - Thursday 7 November, 9am-12pm

Community groups and not-for-profits are invited to a half-day workshop with Funding HQ, to learn about accessing sustainable funding streams. Funding HQ is a platform designed to support the not-for-profit sector, by providing resources, training and advice.

Funding HQ's founder, Jenni Giblin, will be visiting the region to deliver the workshops in-person, at our Council offices.

Find out more and register at tcdc.govt.nz/fundingworkshops



Whangamatā Community Board UPDATE

A word from our Board Chair, Dave Ryan -



"We can expect Labour Weekend to bring a real buzz to Whangamatā this year. Make sure you get out and support our local businesses over the long weekend. Drive safely on our roads, stay up to date with long weekend rule changes, and be kind."
dave.ryan@council.tcdc.govt.nz

In Council news, **the Whangamatā Motorhome Dump Station is no longer fit for purpose**, so we'll be getting a brand-new facility located on Lindsay Road. Construction will begin in the next couple of weeks and open before Christmas.

The Board's next meeting is on Tuesday 26 November, at 10am at the Council board room at 620 Port Rd. Agendas are at tcdc.govt.nz/meetings where you can also find links to recordings of meetings.



LABOUR WEEKEND

Some rules, regulations and schedules may change.



Kerbside collections

There will be no kerbside collections on Labour Day public holiday on Monday 28 October.

The Red week collections (rubbish and food scraps) will take place a day later than usual. Check out tcdc.govt.nz/bindays

Rubbish and Recycling Transfer Stations (RTS) will be open on Labour Day Monday from 8.30am-5.30pm. tcdc.govt.nz/rts



Alcohol Bans

Alcohol bans are in place over Labour weekend from 4pm Friday to 4pm Monday. tcdc.govt.nz/alcoholcontrol



Dog Rules

Dog restrictions are in place on some beaches this Labour weekend. Look out for Council's traffic light signage or go to our website to see what rules apply in your area. tcdc.govt.nz/dogownerguide



Council offices and district libraries

Closed on Monday 28 October. You can still contact us 24/7 on 07 868 0200 or email customer.services@tcdc.govt.nz

@ThamesCoromandelDistrictCouncil

coromandel_tcdc

Get our free eNewsletters!
www.tcdc.govt.nz/subscribe

tcdc.govt.nz

customer.services@tcdc.govt.nz
Private Bag, 515 Mackay St, Thames
Phone: 07 868 0200

TCDC0012024

Challenge Whangamata

Whangamata's Real Service Station

FREE DUNLOP VEST

with the purchase of a set of 4 Sport Maxx or Direzza DZ102+ tyres*



valued at \$150

STICK WITH **DUNLOP**

Offer ends 31 October 2024
T&Cs apply

PHONE SIMON 07 865 7698

WHANGAMATA
TYRE & BATTERY



Car tyres / Wheel alignment
4WD tyres / Tyre repair
Wheel balance / Small implement tyres
Batteries - car & marine

Great news for motorhomes on the move

A new dump station, due to be operative by Christmas, will be installed at 118 Lindsay Road, Whangamata.

It will include wastewater and water lines, and potable and non-potable water taps. It will be designed to the New Zealand Motor Caravan Association Dump Station Guide Standards.

The existing dump station on Martyn Road is no longer fit



for purpose with the facility having to be closed too often for maintenance.



NEARLY FULL
- don't be disappointed!

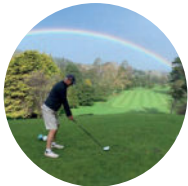
BAYLEYS

PARADISE COAST GOLF Classic

Three of the Coromandel's top golf courses -

- THE LAKES RESORT - PAUANUI
- TAIRUA GOLF & COUNTRY CLUB • TITOKI - WHANGAMATA

again join together for our golf tournament. The Paradise Coast Golf Classic is designed to bring you back to the coast you love, playing the game you adore.



FRIDAY 29 NOV
SATURDAY 30 NOV
SUNDAY 1 DEC

GROSS, NET AND STABLEFORD - TWOS
Max Men 27, Max Women 40

WHAT HAPPENS?

29 Nov - 70 play The Lakes Resort Pauanui and 70 play Tairua
30 Nov - These 70 players swap
1 Dec - Finals Day at Whangamata

PRIZES

Over \$10,000 worth of prizes
Fri-Sat daily prizes, Sun finals

\$10,000+ worth of PRIZES

THANKS TO: Enterprise Whangamata, TCDC, NZ Golf

\$200 Numbers limited to 140 people



To enter go to
www.golfgenius.com/ggid/mak68w

Curtains and Blinds and More



Whangamata and surrounds for:

- Curtains, Sheers, and Linings
- Sun-screen, Light-filter, & Blockout Roller Blinds
- Wood, PVC, and Aluminium Venetian Blinds
- Honeycomb Blinds | Roman Blinds
- Wood and PVC Shutters
- Motorisation and Automation
- Locally owned and operated providing a complete in-home service from consultation to installation

Contact Louize or Gavin on

027 4777 916

or email info@curtainsandblinds.co.nz



Tennis open day



An open day was held on 13 October by Whanga Tennis & Squash club, and what a great day they had. There was a forecast for rain - but it didn't. In fact, it got quite hot.

20 players arrived to play the yankee doubles, winners move up a court - losers split and play the next two in line. It was fun and moved very smoothly. Thank you, David Branks, for organising this. We all had great games.

This was followed by Challenge the Club Champ Simon Bratton. Shaun Fay was the first challenger; I'd say goal for goal but that's the wrong

terminology. So, anyway it ended with a 6-5 win to Simon. Good tennis to watch.

Then Terry, a young stud, challenged Simon. Some great tennis played, some good rallies, but happy to say Simon kept his title. Who's going to be the next challenger?

David finished off with a quiz asking anyone to recite 10 rules to a challenge match. Our youngest entrant Isaac Siddins was closest and received a Dunlop Cap. Well done Isaac, who by the way played some awesome tennis. His grandmother, Patsy Flemming, in her day played at Wimbledon,

so watch this space - we may be watching Isaac on TV one day soon.

Patsy and her husband Les are very involved in our squash group and are a very supportive couple in our club.

The day finished with barbecue sausages - thank you Mike Frogley and our cook Derek - mmm yummy onions too.

The bar, managed by Paula Lucas, helped with the sausages and mingled with the players - thanks Paula. "A great start to the season."

- Barb, Whanga Tennis & Squash
Main photo by Mark James



Labour Day.

Sale.

Run Out Sale.

Wonderest Dream Easy.



Beds-Rus

34 years of great sleep.



50% off.

Swisstek Elite.

40% off.

Selected Pillows.

UP TO

30% off.

Selected Sheet Sets.

50% off.

Chiropractic HDX Reflex.

Whangamata

📍 419 Port Road

☎ 07 865 9027

Waihi

📍 94 Seddon Street

☎ 07 863 8787

Locally owned & operated

Free local delivery

We will take away your old bed



NEW ZEALAND MADE

*Offer valid to 5.11.24 or while stocks last. Discount offers apply to selected beds and bedding only, prices as marked. Offers exclude Everyday Dream prices, run outs, clearance stock (unless otherwise stated) and not to be used in conjunction with any other offer. See in-store for details. We reserve the right to correct errors and misprints and to change product specifications. All products are advertised in good faith and will be available, except in circumstances beyond our control. Product ranges vary between stores and some products are available in selected stores only.

Kings Under The Mountain v2.0

Tighthead Ted signing out for the summer

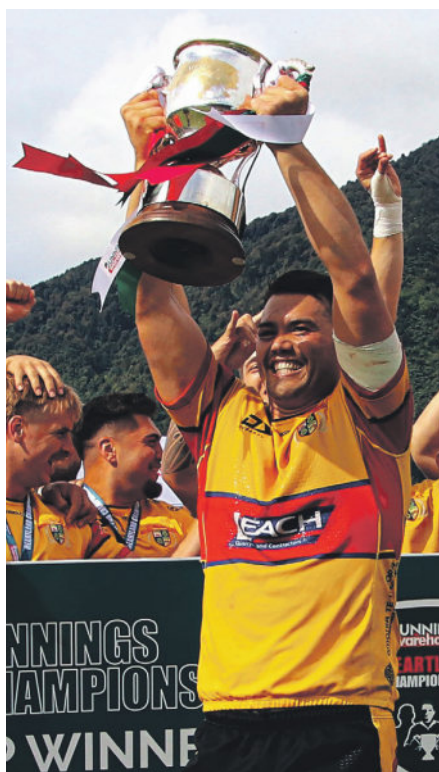
Yes, ole Tighthead Ted's used that headline once already this year, when the Valley beat North Otago in round robin play. But much like my early dating efforts, I was premature, so I'm rolling it out again. Kings under the mountain, Meads Cup Champions! How good is that, how good was Saturday, and how bad must the boys be feeling today as they bus around the Valley showing off the silverware!

The match started like a final too, uncompromising, no holds barred, big carries, big hits, it was a great spectacle. Valley failed to get off to their usual fast start, and were looking a little nervous, forcing passes and trying to make things happen, as opposed to just sticking to their processes and knowing it will come with patience. A Collard penalty after the opening exchanges was replied to by the MC Hammers putting their massive left winger in for a go ahead try. Valley trailing 3-5 after ten minutes was not on the match day schedule pinned up in the changing sheds.

Both teams had plenty of chances over the next few minutes, but attacks were diffused as neither team could gain any control. Valley were still forcing passes, and their normal accuracy was lacking. A ruck penalty on the Valley 22 saw the Hammers extend their lead to five, and after 20 minutes the visitors had some hope of taking home the Meads Cup.

From the restart the Hammers put their clearing kick out on the full, and the Swampies had the throw on the 22 metre mark. Fletch Morgan in midfield made the initial dent in the Hammers line, before finding Brett Ranga in close support. The big fella barrelled on putting the Hammers on the back foot, before Laulea Mau scored under a pile of bodies. Quinn Collard added the regulation conversion for Valley to take the lead back, 10-8.

Valley had a monopoly of possession after the Mau try and hammered (pun intended) away at the Mid Canterbury defence to no avail, but finally after 35 minutes the Valley cracked the defence again,



a line-out drive, then a nice surging run from Rodney Tongotea saw Mau grab a double with another hard earned try.

THT has to mention the Hammers' try-line defence here, all the Swampies four tries were worked for, and with Collard on fire with the boot, the two extras added, and the scoreline was starting to look more comfortable, 17-8 with five to go until the break for oranges.

The second spell did not start as planned, with the Hammers having upped their game and cut their error rate. Exerting all the early pressure, they breached the Valley line with a try to their left wing again, and the conversion from the sideline saw the lead slashed to 20-15. Big carries from Ranga, Alex Thrupp, Tongotea and Cam Dromgool saw the Hammers get pinged and rewarded with a yellow card on the five metre line.

Skipper Axtens called for the scrum, and went off the back, and was pulled down just short. Another penalty saw another scrum called by the skip. But unfortunately that stupid held up rule came into play after halfback Marsh was held up over the line after numerous phases.

The Hammers got to clear their line, and after a couple of good charges from Oneone Faafoou, Te Huia Kutia and McVerry, the ball went loose and the Hammers kicked long. Valley scrambled back but knocked on, and from the ensuing scrum, some wires were certainly crossed on defence, and the Mid Canterbury right wing found himself with 30 metres of space to work in, and dotted down for the try. The cracking conversion saw the Hammers take the lead for the second time in the match, 22-20, and the Valley were looking rattled with 27 minutes to go.

The Hammers clearing kick was charged, and with Faafoou and Mau carrying like berserkers, a series of attacks saw prop Kutia pick and go from a ruck and make the line. Lead regained, and after the Collard conversion, extended to 27-22.

From the kick-off, Valley made it two in two minutes. Collard launched a kick from his 22 after his forwards brought the kick-off down safely, and the crowd watched it sail over the Hammer fullback's head, bounce, and then roll gloriously into touch five metres from the line. The fatties did the rest, Dromgool took the line-out, and Lealau Mau, in fine try scoring form, scored his third for the day, all buried under a ton of bodies. Collard from out wide slotted the conversion, using the wind perfectly to bend the ball between the uprights.

The score had gone from two points down to 12 points up in the blink of an eye. Three more were rapidly added after Dromgool was first on the scene to a ferocious tackle by Etoni, and the Mid Canterbury player was penalised for holding on. From about 48 metres out on the angle, Collard saw the ball bounce in off the crossbar. In an eight minute spell the Swampies had piled on 17 points and put the game out of reach.

What a twelve minutes it was. A tackling clinic as the Hammers held onto the ball phase after phase, and the Valley defence, led by Kutia, Axten's, replacement flanker Kenan Gillson and replacement hooker Josh Tye, repelled wave after wave of attack. Finally the

Hammers coughed up the pill and were penalised, and fittingly, Mr Boot, Quinn Collard tapped and kicked the ball to touch, game over, CHAMPIONS!

Geez, it's tough to single out any players in a final like this. First, prop Lance McIntyre. Gave a hell of a shift after getting limited game time all season behind young tyro Will Martin. But rolled up his sleeves and got stuck in, and is now a Meads Cup winner. On the subject of props, try scoring Te Huia Kutia. Eighty minutes. Our hooker mate Oneone Faafoou was back to his running best, along with his locks, the veterans McVerry and Ranga. Both carried hard, and Ranga got around the field like a spring chicken running. The loose trio were outstanding too - Axtens tackled himself to oblivion, Dromgool was a menace over the ball, and Mau, three tries ample reward for a top match.

The backs though we're not just there to fill out their jumpers and brush their flowing locks. The midfield pairing of Morgan and Tongotea got the pack on the front foot with their strong running, as did Etoni on the wing. Etoni also put in some big hits that would have had the Hammers ball carriers looking for him. Ole mate the peroxide warrior, Alex Thrupp had limited chances and had to go looking for work, but he made the Hammers defence work hard to bring him down. Collard and Doolan, the fullback/first five hybrids controlled proceedings well with their boots, Collard's goal-kicking being a master class. Speaking of hybrids, halfback/winger Charlie Marsh cut the Hammers up early and was as per usual cleared crisply and accurately.

Geez, how PC is THT becoming, everyone gets a prize... but hell, it is the final, it was won, and no one made a prick of themselves. All is well in the world for another year.

Thames Valley 37 (L Mau 3, T Kutia tries; Q Collard 4 conversions, 3 penalties), beat Mid Canterbury 29 (4 tries, 3 conversions, penalty).

See loads of great photos on Facebook: Barts Rugby Photography!



Government fast tracks mining in Whangamata

Local environment group Earthwatch Whangamatā is raising the alarm over the Government's move to Fast-track mining.



Earlier this month, the first list of projects to be approved for Fast-tracking was released. There was disappointment and anger around the Peninsula at the inclusion of Oceana Gold's 'Waihi North' mine in the nationally significant public conservation land up behind the popular Parakiwai valley, at Wharekirauponga.

"Let's be honest, this mine will be located 8km from Whangamatā, in the head waters of our Otahu Estuary, this should be called 'Whangamatā South'" says Earthwatch Whangamatā Chairperson Kate Selby-Smith.

The proposal would see mining in the Coromandel Range for the first time since the 1800's.

Concerns have been raised around the significant impacts on freshwater, biodiversity, recreational values and the long-term impacts of mining such as toxic waste storage and acid mine drainage.



Waterfall at head of Parakiwai valley, from the swingbridge.

There are significant concerns about the impacts on water. "Our community is still reeling from the Ōhinemuri turning orange with mine waste in September, can you imagine having to stop swimming in the Otahu Estuary due to toxic mine waste in the river?"

The community is now deeply worried about what else is coming. "We know that other multinational

mining companies are looking at mining our backyard as well" says Selby-Smith. Exploration permits have recently been granted across the Coromandel Peninsula.

Rua Gold is actively sampling the Wentworth Valley and Mineralogy (Clive Palmer's company) has a permit extending from Whangamatā to Pauanui, even including land under Moana House.

"We all know that these places are too precious to mine, and we are shocked that our government is not only prepared to let these miners in, but that there will be no public participation - our communities will have no voice or choice".

Earthwatch Whangamatā is a group that formed back in the 1980's and successfully stopped a proposed gold mine at Onemana. The group reformed in recent years as it became more apparent that Oceana Gold were going to pursue mining under public conservation land.

"We are just locals who care, we love this area - that is why we all choose to live here. We don't want it destroyed by mining."

The group meet regularly and are gearing up to fight. "As a community we are being left out of decisions that will directly affect us, our wellbeing, our lifestyle and for many our livelihood for generations to come."

Earthwatch Whangamata asks everyone who wants to stop gold mining in our valleys to follow us on social media or email us at earthwatchwhangamata@gmail.com.



Ohinemuri River turned orange.



The latest drilling site set up above the waterfall, Parakiwai valley.

<p>\$1 WINGS WEDNESDAY</p> <p>from 4:30pm until sold out</p> <p>FULL SIZE BUFFALO WINGS!!</p> <p>\$1 PER WING!!</p> <p>Dine in only</p> <p>conditions apply</p>	<p><i>Pasta Thursday</i></p> <p>ANY HAUS PASTA & EITHER A PINT OF TAP BEER OR GLASS OF HAUS WINE</p> <p>Only \$23</p> <p>Conditions apply</p>	<p>FRIDAY SHOUT</p> <p>\$10 PINTS \$10 PIZZAS \$10 HOUSE WINE \$10 COCKTAIL</p> <p>Every Friday 2:30pm - 5:30pm</p> <p>Pizzas are available for dine in or takeaway</p>	<p>SHELLFISH SATURDAY</p> <p>GRAB 1KG OF NZ GREENLIPPED MUSSELS W GARLIC BREAD + A PINT OF TAP BEER OR GLASS OF HOUSE WINE</p> <p>ONLY \$25</p>	<p>-ONLY-\$20</p> <p>GIVE A SCHNIT SUNDAYS</p> <p>Choose from chicken or pork + pint of tap beer or glass of house wine</p> <p>Conditions apply</p> <p>Served w fries, slaw & gravy</p>
--	--	--	---	---

Follow us on Facebook & Instagram to keep up to date with all our events & deals @crafthauswhanga

CRAFT HAUS
Gastropub Est. 2022

711 Port Road, Whangamata
@crafthauswhanga - www.crafthauswhanga.co.nz
07 865 6300



PAUANUI WATERWAYS OPEN DAY

SATURDAY 26 OCTOBER

1-3pm Hammerhead
Salespeople onsite
Pontoons in place

Harcourts
Pauanui



1-2pm Open Homes
117 Motu Grande
123 Motu Iti
166A Waterways Parade



See the @harcourtspauanui
facebook page for more info!

2-3pm Open Homes
16 Ian Hopper Way
7 Ian Hopper Way

NEW Auction listing in the Villa Quays

Paradise Coast Realty Limited
Licensed Agent REAA 2208

BAYLEYS



Whangamata 504 Martyn Road

Enchanting private oasis

510 4 2

Nestled in the heart of Whangamata, this vibrant, unique beach home offers the perfect blend of character, comfort, and coastal charm. Designed for both memorable summer holidays and laid-back permanent living, this four bedroom retreat captures the essence of Whangamata's beach lifestyle. The upper level boasts a spacious, sun-soaked lounge that flows onto a covered deck—an ideal spot for morning coffee or evening gatherings. Two bathrooms (one on each level), an internal staircase, and a master bedroom sanctuary on the top floor. Chef's kitchen, island bench, gas hob, central wall oven, and an abundance of pantry space. The home is for sale on an "as is" basis - ask for disclosures.

Auction (unless sold prior)
11am, Thu 7 Nov 2024
96 Ulster Street, Hamilton

View by appointment

Gordon Turner 021 385 385
gordon.turner@bayleys.co.nz
MG REALTY LTE, BAYLEYS, LICENSED UNDER THE REAA ACT 2008

Carol Hatton 027 574 3758
carol.hatton@bayleys.co.nz
MG REALTY LTE, BAYLEYS, LICENSED UNDER THE REAA ACT 2008

bayleys.co.nz/2221364



Harcourts
Whangamata



113 Seabreeze lane

451m² 3 2 1

Seabreeze at the Beach

This deceased estate must be sold. Quality GJ Gardner Home built 2013. Double glazed, fully insulated. The vendor paid too much for it because he loved it and was to be his forever home. Unfortunately his forever was cut short by cancer. **The executors will consider all offers.** Come for a look, it's a great buy!

Open Home: Sunday 1:00pm - 2:00pm. 113 Seabreeze Lane, Whangamata.

Chris

Christopher Brown
027 257 6602



Paradise Coast Realty Limited
Licensed Agent REAA 2008
This document has been prepared to assist solely in the marketing of this property. While all care has been taken to ensure the information provided herein is correct.

BAYLEYS

NEW LISTING



Whangamatā 103 Hinemoa Street

An iconic beach opportunity

Nestled close to the end of a peaceful cul-de-sac on a generous 809 sqm (more or less) section, just metres from the ocean. Now, is your chance to create your own legacy by the sea. This property must be sold. Spread over three levels, this expansive home captures sweeping sea and island views from four of the five bedrooms and both living areas. Designed to embrace its stunning natural surroundings. Comprising of five spacious bedrooms and three well-appointed bathrooms, The top floor living space is a breathtaking retreat with its striking timber ceilings and panoramic views. Garaging for all your needs: Large double garage—perfect for a boat, motorhome, or extra storage for all your coastal toys. Built with enduring materials—brick, weatherboard, and Coloursteel roofing—this home showcases timeless style and durability. Disclosures apply.

bayleys.co.nz/**2221369**

809_{sqm}  5  3  2 

Asking price \$2,450,000

View 1.30pm Sat 26th & 10.30am Sun 27th Oct

Gordon Turner 021 385 385

gordon.turner@bayleys.co.nz

Carol Hatton 027 574 3758

carol.hatton@bayleys.co.nz

MH REALTY LTD, BAYLEYS, LICENSED UNDER THE REA ACT 2008

NEW LISTING



Onemana 123 The Grove

Beachside retreat 200m from sand and surf

Discover your dream beach property so close to the sparkling shores, tucked away at the end of a peaceful cul-de-sac. This single-level home offers a relaxed coastal lifestyle, with easy access to tennis courts, a petanque court, playground, reserve, and the local surf club - perfect for making the most of beachside living.

Key Features: Prime location, down a private driveway for peace and privacy. Three bedrooms, open-plan living flows out to wrap-around decks. Your choice of sun or shade on the decks that surround the house. Family-friendly flat lawn. A high stud garage, perfect for your boat or prized car collection. This property offers the perfect blend of comfort, convenience, and coastal charm. Don't miss the chance to secure this unique gem, where every day feels like a holiday!

bayleys.co.nz/**2221368**

861_{sqm}  3  2 

Auction (unless sold prior) 11am, Thu 21st Nov 2024

96 Ulster Street, Hamilton

View 1.30pm Sat 26th & Sun 27th Oct

Gordon Turner 021 385 385

gordon.turner@bayleys.co.nz

Carol Hatton 027 574 3758

carol.hatton@bayleys.co.nz

MH REALTY LTD, BAYLEYS, LICENSED UNDER THE REA ACT 2008



Lindsay Turnbull | 0274 238 093
lindsay.turnbull@realty.co.nz



PROPERTIES FOR SALE BY LINDSAY



217A TUI ROAD - TIME TO RELAX ON TUI
2 BED | 1 BATH | 1 CARPORT | 2 CABINS | 351m²
PRICE BY NEGOTIATION



401 OTAHU ROAD - ESTUARY ENCHANTMENT
3 BED | 2 BATH | 2 CAR
PRICE BY NEGOTIATION



299 CHARTWELL AVE - FULL SITE & SPACE FOR ALL
3 BED | 1 BATH | 2 CAR | 800m²
PRICE BY NEGOTIATION



UNIT 18 415 PORT RD - BEST VALUE AT THE BEACH
2 BED | 1 BATH | 2 CAR
\$460,000 (PLUS GST IF ANY)



387 WENTWORTH VALLEY RD - AMAZING & AVAILABLE
4 BED | 2 BATH | 5 CAR | PADDOCKS | 3.7006 Ha
PRICE BY NEGOTIATION



140B SHARYN PLACE - PEACEFULL OASIS
3 BED | 1 BATH | 1 COVERED CARPORT | 757m²
PRICE BY NEGOTIATION



143 LORRAINE PLACE - BRING THE FAMILY
3 BED | 1 BATH | 2 CAR | 989m²
PRICE BY NEGOTIATION



104 MAYFAIR AVE - SO CENTRAL
3 BED | 1 BATH | GARAGE | CABIN | 612m²
PRICE BY NEGOTIATION

LOCAL RESIDENT, TOTALLY RELIABLE,
MORE THAN REASONABLE RATES

Lindsay Turnbull | 0274 238 093
lindsay.turnbull@realty.co.nz
atrealty.co.nz/lindsayturnbull





OPEN HOME UNIT 12 SATURDAY 26 OCTOBER LABOUR WEEKEND 3PM

For sale 2 bedroom village units under ORA contract \$675,000. Open home at number 12 Wilson Gardens. Please note number 5 will be coming on the market shortly.

You will be entering a fully refurbished home with 2 bedrooms, an open plan lounge/diner and new modern kitchen with all new appliances. Heat pump in the lounge and under floor heating. Internal access to a single garage with laundry. A beautifully kept garden area attached to the units, that is maintained by our gardeners.

Great location close to all amenities and the beach.

Also available - one-bedroom serviced apartments within the main facility building, also under ORA selling at \$425,000. For those not ready for permanent care support but want to maintain their independence. We can provide services such as medication management and meals provision for an additional cost. These have one parking space available and exit either onto a small patio area or into the beautifully kept enclosed garden area.

For more information and to view the serviced apartments please contact the facility on 07 865 9643 and we will be happy to chat through this option with you.

Moana House Rest Home and Hospital has

vacancies for those who require just a little bit more daily support from our wonderful Health Care Assistants and Nurses. A nurse is on duty 24 hrs a day 7 days a week. Personalised Care Plans that support spiritual and cultural needs to be met as well as assistance with all your daily needs.

Our day centre is a great way to get to know us and for you to have some social activity.

Thinking of spoiling yourself, how about using our meals on wheels service. We have wonderful volunteers who deliver a nutritional meal to your door. Prices on enquiry.

A little time away from home or give your caregiver a break. We provide respite services, where you can come and stay for a short time. (room availability)

We have a wonderful activity team that services the whole site with a variety of activities and trips out.

If any of these services sound like you, please feel free to give us a call and we can chat through the options.

Please come along to Wilson Garden Village on Saturday 26th Oct at 3pm unit 12 for a look around and view our beautifully kept village and unit for Sale.

For more information, please phone (07) 865 9643
Deborah Padfield (General Manager)
353 Tairua Road, Whangamata

MOANA HOUSE & VILLAGE

He whare ahuru – *a caring safe place*

Whangamata

PRECISION
REAL ESTATE MREINZ



144 Te Tutu Drive, Whangamata

What a Stunning Home
Price By Negotiation

This home really does have the 'wow' factor. Built to a very high standard and covered by a master build guarantee, just move in and enjoy! It has 4 double bedrooms, 2 bathrooms, internal access garage and a magnificent living area. You must visit this home to appreciate the thought that has gone in to this super friendly design and use of quality materials, you will be impressed!

Open home Sun 27/10 1-1:30pm



164 Bambury Place, Onemana

Such A Cool Beach House
Price By Negotiation

Now this is a really great beach house, it ticks all the boxes – mostly flat section, 3 bedroom house, garden studio/sleepout, new garage with loft above. A perfect family bach with space for anyone that arrives to enjoy the magnificent Onemana Beach scene. Great coastal walks, surfing, swimming, diving or tow the boat a short distance to Whangamata and go fishing. If you like cafes and golf it's also only minutes away. Don't delay, be in for Christmas!

Open homes Sat/Sun 26-27/10 11-11:30am

PHIL CLARK 021 940 041

Precision Real Estate Ltd MREINZ Licensed REA 2008



Whangamata Real Estate

WHANGAMATA REAL ESTATE 2024 LTD (LICENSED REAA 2008)

07 865 8499

328 Ocean Road, Whangamata

whangamatarealestate.co.nz

OUR EXPERT SALES TEAM

Our loyal and long standing sales team is a testament to our company. In Murray`s words *"the company is only as good as the people who work for it"*. We are a consistent and experienced sales team with a long history of results to prove it.



Murray Cleland
Branch Manager
021 950 445

Time with WRE : 11 years
Years of Real Estate Experience : 40 +
Past occupation : Finance Manager, Auctioner



Colin Thompson
Sales Team Manager & Salesperson
021 723 723

Time with WRE : 19 years
Years of Real Estate Experience : 35
Past occupation : Plumber



Sharon Laurenson
Salesperson
027 662 3164

Time with WRE : 23 years
Years of Real Estate Experience : 23
Past occupation : Travel Consultant



Brooke Goodman
PA to Sharon Laurenson
027 870 5162

Time with WRE : 5 months
Years of Real Estate Experience : 5
Past occupation : Real Estate Administration



Nancy Millett
Salesperson
021 517 708

Time with WRE : 14 years
Years of Real Estate Experience : 14
Past occupation : IAG Insurance, Sales



Julian West
Onemana Salesperson
027 222 4364

Time with WRE : 12 years
Years of Real Estate Experience : 18
Past occupation : Construction



Chris & Katie Speedy
Salespersons
021 747 901 or 021 382 022

Time with WRE : 8 years & 1 year
Years of Real Estate Experience : 8 & 1
Past occupations : Sales/Marketing & Teacher



Sarah Speedy
Salesperson
027 843 4013

Time with WRE : 9 years
Years of Real Estate Experience : 9
Past occupation : PA to Sharon



Andrew McGee
Salesperson
021 135 5158

Time with WRE : 7 years
Years of Real Estate Experience : 16
Past occupation : Lawyer



Teal-Brae Cooney
Salesperson
027 420 1574

Time with WRE : 1 year
Years of Real Estate Experience : 1
Past occupation : Sales Cadet

If you are thinking of buying or selling property
Call any of our sales team and experience our exceptional service for yourself



Whangamata Real Estate

WHANGAMATA REAL ESTATE 2024 LTD (LICENSED REAA 2008)

07 865 8499

328 Ocean Road, Whangamata

whangamatarealestate.co.nz

PROVEN RESULTS



SOLD

WHANGAMATA
215 Beverley Tce



SOLD

WHANGAMATA
111A Esplanade Drive



SOLD

WHANGAMATA
208 Chartwell Ave



SOLD

OPOITERE
8 Kakakapa Road



SOLD

WHANGAMATA
105 Bruce Wallace Place



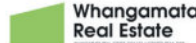
SOLD

WHANGAMATA
112A Kiwi Road



SOLD

WHANGAMATA
116B McKellar Pl



SOLD

WHANGAMATA
112A Ngati Pu Place



SOLD

ONEMANA
108 Oratia Place



SOLD

WHANGAMATA
305A Achilles Ave



SOLD

WHANGAMATA
111 Te Pamahue Drive



SOLD

WHANGAMATA
105 Avalon Place



SOLD

WHANGAMATA
105 McKellar Place



SOLD

WHANGAMATA
103 Everitt Cres



SOLD

ONEMANA
112 Oratia Place



SOLD

WHANGAMATA
642 Port Road



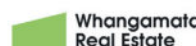
SOLD

WHANGAMATA
104B Linton Crescent



SOLD

WHANGAMATA
132 Achilles Ave



SOLD

WHANGAMATA
110A Waverley Place



SOLD

ONEMANA
107 Titiro Place



SOLD

WHANGAMATA
113 Moana Anu Anu Ave



SOLD

WHANGAMATA
300 Port Road



SOLD

WHANGAMATA
100 Sylvia Road



SOLD

WHANGAMATA
202 Otahu Road





Whangamata Real Estate

WHANGAMATA REAL ESTATE 2024 LTD (LICENSED REAA 2008)

Don't just dream it, live it



Your Bach or Development Opportunity

1005 Port Road, Whangamata

2 1 2

Auction 9 November 2024 at 1pm (unless sold prior)

Venue: 328 Ocean Road, Whangamata

- 1012m² extra density zoned development opportunity
- 2-bedroom 1960s bach
- Sleepout
- Separate double garage
- 4 houses from the wharf and Whangamata Ocean Sports Club
- One block from the surf
- Easy walk to cafés and shops
- Secure this rare opportunity

View 3pm Saturday 26 Oct & Sunday 27 Oct
3pm Saturday 2 Nov



Chris & Katie Speedy
M 021 747 901 & 021 382 022
View Listing whanga.co/8376



Prime Beach Zone

124 Ranfurly Road, Whangamata

4 3 2

Auction 9 November 2024 at 1pm (unless sold prior)

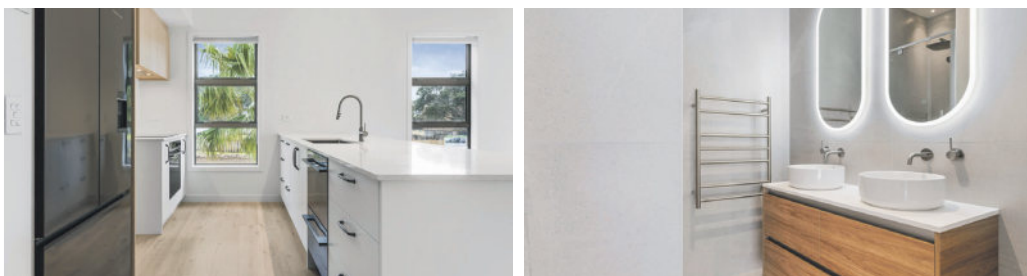
Venue: 328 Ocean Road, Whangamata

- Experience executive beach living with all the comforts in this brand-new, never-lived-in property
- Situated in a prime Whangamata location
- Designer kitchen with scullery
- North-facing deck for effortless entertaining
- Freehold title
- Lift for easy access
- Ducted heat pumps and outdoor heater

View 12pm Saturday 26 Oct & Sunday 27 Oct
12pm Saturday 2 Nov



Chris & Katie Speedy
M 021 747 901 & 021 382 022
View Listing whanga.co/8376



Space & Location

131B Barbara Avenue, Whangamata

5 2 2

Auction 9 November 2024 at 1pm (unless sold prior)

Venue: 328 Ocean Road, Whangamata

- This two-level home has room for all, with 5 double bedrooms, 2 bathrooms, and an internally accessed double garage
- Located just a short distance from the beach and town center
- Perfect for a permanent residence or holiday home
- The first-floor living space flows seamlessly to the outdoor entertaining area, complete with a louvre roof

View 1pm Saturday 26 Oct & Sunday 27 Oct
1pm Saturday 2 Nov



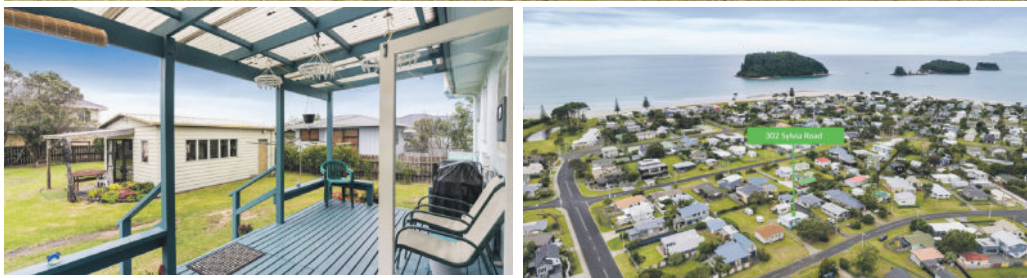
Chris & Katie Speedy
M 021 747 901 & 021 382 022
View Listing whanga.co/8376



Whangamata Real Estate

WHANGAMATA REAL ESTATE 2024 LTD (LICENSED REAA 2008)

Don't just dream it, live it



Classic Kiwiana

302 Sylvia Road, Whangamata

1 1

\$1,395,000

- Original 1-bedroom, 1-bathroom bach
- Spacious full site, freehold 852m² (more or less)
- Ample room for boats, tents, and outdoor activities
- Prime location
- Potential for future development or land banking
- Extra space: Garage/sleepout ideal for guests
- Just minutes' walk to the beach and surf club

View 10am Saturday 26 Oct



Chris & Katie Speedy
M 021 747 901 & 021 382 022
View Listing whanga.co/8322



Make This Your Next Move

205A Philomel Road, Whangamata

4 2 2

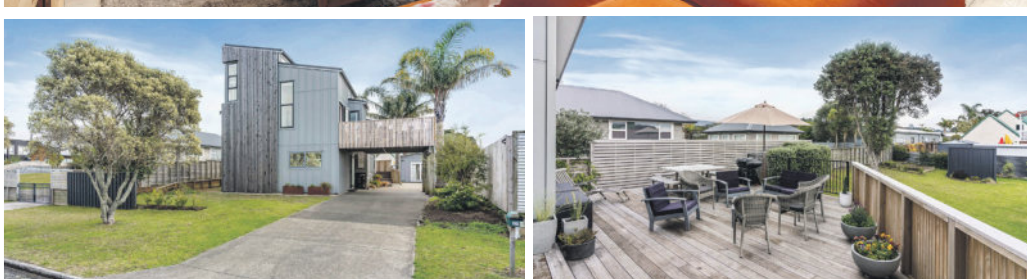
\$1,540,000

- Located a short stroll to the beach and town
- 3 bedroom main house with indoor outdoor living
- Open plan living on the ground floor
- Courtyard for entertaining with pizza oven
- Boat shed and sleepout with 1 bedroom, bathroom and living
- The perfect property for families, holiday makers and boating enthusiasts

View 1pm Saturday 26 Oct
1pm Saturday 2 Nov



Chris & Katie Speedy
M 021 747 901 & 021 382 022
View Listing whanga.co/8392



Love It On Linton

221 Linton Crescent, Whangamata

3 3

Price by Negotiation

- Level full site of 738 m² (more or less)
- Quality renovation ready to be enjoyed
- Multipurpose loft space
- Stylish kitchen is positioned to be the heart of the home
- Spacious open-plan living area with high stud ceilings
- Large, sunny, north-facing deck
- Separate garage / utility with bathroom facilities.
- Short walk to the beach and Otahu Estuary

View 2pm Sunday 27 Oct



Chris & Katie Speedy
M 021 747 901 & 021 382 022
View Listing whanga.co/8344

Whangamata Real Estate

WHANGAMATA REAL ESTATE 2024 LTD (LICENSED REAA 2008)

Don't just dream it, live it



Beauty on Bellona

2 🚗 2 🚿

215A Bellona Road, Whangamata

Deadline Sale 3pm, 6 November 2024 (unless sold prior)

- Located in the beach zone, with the surf club within reach
- Enjoy easy access to a 9-hole golf course right at your fingertips
- Garage doubles as a sleepout, providing extra space
- Front deck for morning sun all year round

View 11am Saturday 26 Oct & Sunday 27 Oct, 11am Saturday 2 Nov



Chris & Katie Speedy

M 021 747 901 & 021 382 022

View Listing whanga.co/8385



Golfers Paradise

2 🚗 1 🚿 2 🚗

423 Achilles Avenue, Whangamata

Enquiries over \$995,000

- Flat, 406sqm (more or less) freehold site
- Open-plan living and dining
- Secure parking, storage, and laundry
- Walking distance to golf course, beach, school, and pool

View 2pm Saturday 26 Oct & 2pm Saturday 2 Nov



Chris & Katie Speedy

M 021 747 901 & 021 382 022

View Listing whanga.co/8375



Secluded Retreat

5 🚗 4 🚿 2 🚗

118 Brook Place, Whangamata

\$1,895,000

- Located close to the estuary
- Presented in immaculate condition
- Extra accommodation including 60m² separate self-contained 1 bedroom unit
- Beautifully landscaped and private 1368m² section

View 1pm Sunday 27 Oct



Chris & Katie Speedy

M 021 747 901 & 021 382 022

View Listing whanga.co/8325



A New Lifestyle Awaits

3 🚗 2 🚿 5 🚗

68 Parakiwai Quarry Road, Whangamata

\$2,295,000

- A beautiful 2 hectare lifestyle block with large 236sqm house
- Kitchen has been upgraded, generous living spaces
- Covered deck area with louver roofing
- Separate 3 bay garaging/workshop

View 11am Sunday 27 Oct



Chris & Katie Speedy

M 021 747 901 & 021 382 022

View Listing whanga.co/8274



Quality & Position

4 🚗 2 🚿 2 🚗

102B Hinemoa Street, Whangamata

\$2,495,000

- Breathtaking views of the sea & islands
- Fully renovated in 2014
- Open plan living, dood sized deck for entertaining
- Borders Island View Reserve

View 11am Saturday 26 Oct & 11am Saturday 2 Nov



Chris & Katie Speedy

M 021 747 901 & 021 382 022

View Listing whanga.co/8275



Whangamata Real Estate

WHANGAMATA REAL ESTATE 2024 LTD (LICENSED REAA 2008)

Don't just dream it, live it



Kiwi Classic Bach In Kiwi

217 Kiwi Road, Whangamata

2 1

Auction 9 November 2024 at 1pm (unless sold prior)

Venue: 328 Ocean Road, Whangamata

- Exceptional opportunity to secure this beach home
- Major renovations recently completed
- Ideally suitable for permanent or family beach holidays
- Spacious level contour site provides for extra vehicle parking
- Rear covered and screened sundeck opens onto private rear yard area
- Separate lined garage provides for extra space
- Secure this property and be in for summer

View 3pm Saturday 26 Oct & 1pm Sunday 27 Oct



Colin Thompson

M 021 723 723

View Listing whanga.co/8388



Solid Beach Opportunity

308A Given Avenue, Whangamata

3 3 1

Auction 9 November 2024 at 1pm (unless sold prior)

Venue: 328 Ocean Road, Whangamata

- This 3 1/2 year old home is presented very well
- Would be ideally suitable for permanent or holiday living
- 3 double bedrooms plus serviced studio area
- Open plan easy living opening onto to a screened patio
- Internal access garaging with combined laundry
- Modern low maintenance construction
- Excellent beach and estuary location
- Just add the finishing landscape design and make it yours

View 1pm Saturday 26 Oct



Colin Thompson

M 021 723 723

View Listing whanga.co/8381



Kiwi Beach Living

132 Kiwi Road, Whangamata

3 2 2

Price by Negotiation

- Recent extensions and quality refurbishment makes for relaxed easy living
- Master bedroom with direct deck access
- North facing for maximum sun
- Open plan living with raked ceiling, and designer kitchen
- Expansive deck with wide views overlooking the golf course
- Level 809m2 site with easy care landscaped grounds
- Internal access garaging plus off street parking.

View 2pm Saturday 26 Oct & 12pm Sunday 27 Oct



Colin Thompson

M 021 723 723

View Listing whanga.co/8386



Whangamata Real Estate

WHANGAMATA REAL ESTATE 2024 LTD (LICENSED REAA 2008)

Don't just dream it, live it



DEADLINE SALE

Location Wins Every Time

208A Ocean Road, Whangamata

3 2 1

Deadline Sale 4pm, 31st October 2024 (unless sold prior)

- Central location, walk to town and beach
- Open plan easy ground floor living and sunny aspect
- Excellent connection to outdoor entertainment area
- Three double bedrooms - Master bedroom on either floor
- Dual bathrooms, one on each level
- Internal access garage and auto door
- Modern construction and features
- Low maintenance home and grounds
- The perfect lock and leave holiday or permanent home
- Selling furnished

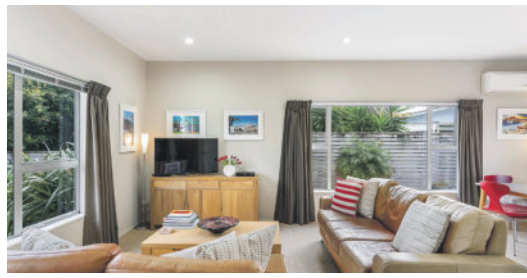
View 2pm Saturday 26 Oct



Sharon Laurenson

M 027 662 3164

View Listing whanga.co/8373



DEADLINE SALE

Reserve Front – Overlooking Marina

111 Moana Anu Anu Avenue, Whangamata

3 2 2

Deadline Sale 4pm 31 October (unless sold prior)

- Spacious three bedroom single level home
- Master bedroom with ensuite and walk in robe
- Open plan kitchen dining and lounge connected to north facing decks
- Kitchen enjoys morning sun and a view of the boats
- Lounge warmed by natural sun, heatpump or wood burner
- Recently renovated bathroom with separate toilet
- Large double garage / workshop
- Established fruit trees and gardens
- Ample off street parking for boats and campervans

View 12pm Saturday 26 Oct



Sharon Laurenson

M 027 662 3164

View Listing whanga.co/8378



Absolute Waterfront Property

117A Patuwai Drive, Whangamata

5 2 2

Enquiries over \$3,350,000

- Be mesmerized by the ever-changing estuary outlook
- On boundary of grassy reserve
- Easy access to water for a kayak or swim
- Expansive deck overlooking reserve and estuary
- Open plan living area
- Self-contained area for guests
- Internal access double garage - extra height for boat
- Freestanding fire
- Hot / cold outdoor shower
- Great holiday or permanent home

View 12pm Sunday 27 Oct



Sharon Laurenson

M 027 662 3164

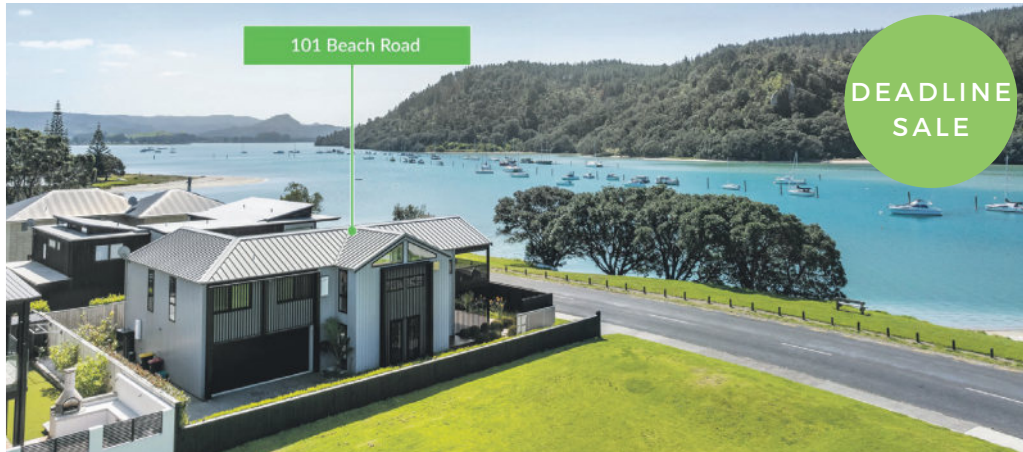
View Listing whanga.co/8378



Whangamata Real Estate

WHANGAMATA REAL ESTATE 2024 LTD (LICENSED REAA 2008)

Don't just dream it, live it



Prime Harbour Front - Whangamata

101 Beach Road, Whangamata

4 3 2

Deadline Sale 4pm 31 October 2024 (unless sold prior)

- Panoramic views of beach, bay, boats, wharf and headland
- Owners mooring out front, an optional extra
- Modern luxury four bedroom home on freehold title
- Clever design with quality construction and finish
- Open plan entertainer's kitchen and living area
- Elevated north facing covered deck
- Spacious master suite with walkin robe & ensuite
- Second lounge connects well to pool, sun loungers & pool bar
- Internal access double garage – fully lined and carpeted

View 3pm Saturday 26 Oct



Sharon Laurenson

M 027 662 3164

View Listing whanga.co/8376



Tangaroa Road Beach Retreat

107 Tangaroa Road, Whangamata

4 2 1

Enquiries over \$2,700,000

- Prime location across from the beachfront
- Ocean views
- Easy access to beach and surf
- Multiple outdoor entertainment areas offering sun or shade
- Open plan kitchen, dining and living area flanked by dual decks
- Expansive covered deck extends living area for year-round use
- Second lounge / Family room with kitchenette
- 875sqm freehold title
- Fully fenced and gated rear yard

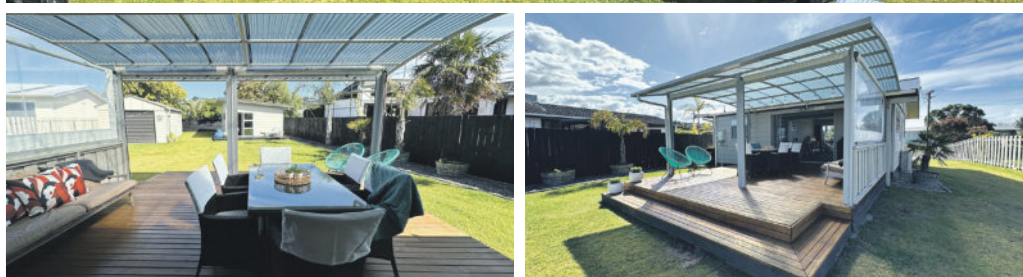
View 1pm Saturday 26 Oct & Sunday 27 Oct



Sharon Laurenson

M 027 662 3164

View Listing whanga.co/8391



Hot Property - It's Cool!

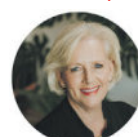
304 Linton Crescent, Whangamata

4 2 1

Deadline Sale 4pm 20 November 2024 (unless sold prior)

- Freehold 743sqm full site, fully fenced and gated
- Renovated and modern two bedroom dwelling plus
- Two bedroom self contained sleepout
- Modern kitchen, lounge and bathroom
- Single level living with great connection to outdoors
- Perfect indoor/outdoor link to dual deck options
- 8.3m deep boat garage to store all the toys
- Located between the town and estuary
- Selling fully furnished and ready to go for summer
- Immaculate, functional, low maintenance property

View 2pm Saturday 26 Oct & Sunday 27 Oct



Sharon Laurenson

M 027 662 3164

View Listing whanga.co/8387

Whangamata Real Estate

WHANGAMATA REAL ESTATE 2024 LTD (LICENSED REAA 2008)

Don't just dream it, live it



Move In & Make It Your Own

112 Isabel Street, Whangamata

3 2 2

\$839,000

- Located within walking distance of Moana Point Reserve, the harbour, and the marina
- Open plan kitchen, dining, and living area with access to a sunny deck
- Freestanding fireplace plus the bonus of a heat transfer system
- Freehold 609m2 section, partially fenced with easy-care garden
- Single garage, single carport, and woodshed
- Ideal for families, investors, or first-time home buyers

View 11am Saturday 26 Oct



Sharon Laurenson

M 027 662 3164

View Listing whanga.co/8365



Stylish Starter

109 Sharyn Place, Whangamata

1 1

Closes 4pm 20 Nov (unless sold prior)

View 11am Saturday 26 Oct

- Freehold full site 639sqm
- Self contained garage with shower & toilet
- Covered deck and outdoor area
- North West aspect for excellent all day sun
- Nice level building platform

Sharon Laurenson

M 027 662 3164

View Listing whanga.co/83



Estuary Sanctuary

103 Estuary View, Whangamata

3 2 2

Enquiries over \$1,395,000

View 1pm Saturday 26 Oct

- Freehold full site 600sqm
- Elevated site with views
- Open plan living, modern kitchen
- Excellent indoor / outdoor connection
- Established gardens, some exotic planting

Sharon Laurenson

M 027 662 3164

View Listing whanga.co/8204



Sea View & Tree Tops

119 Chevron Crescent, Whangamata

3 2 1

\$1,470,000

View 12pm Saturday 26 Oct

- Master bedroom with sea views
- Spacious kitchen, dining and living area
- Lounge with expansive garden and bush views
- Sheltered & secluded north facing patio
- Elevated location

Sharon Laurenson

M 027 662 3164

View Listing whanga.co/8231



The Beverley Terrace Bonus

320 Ocean Road, Whangamata

6 2 1

Enquiries Over \$2,260,000

View by Appointment

- Dual road frontages
- 835sqm Extra Density Zone
- Development potential
- Expansive deck
- Separate garage and storage lockup

Sharon Laurenson

M 027 662 3164

View Listing whanga.co/8182



Your Coastal Paradise Awaits

504 Linton Crescent, Whangamata

3 2 2

Deadline Sale 3pm, 12 November 2024 (unless sold prior)

- Located close to estuary and beach
- The outdoor features truly set this property apart
- The spacious deck offers a wonderful setting for alfresco dining
- Open-plan living area seamlessly integrates with the outdoors
- Spacious bedrooms and 2 well-appointed bathrooms
- The large yard and nicely planted gardens are an entertainer's delight
- Ample space to unwind
- This property ticks all the boxes, make it your forever home or your holiday retreat

View 12pm Saturday 26 Oct & Sunday 27 Oct



Nancy Millett
M 021 517 708

View Listing whanga.co/8389



A Charming Family Home

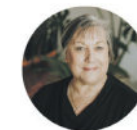
3 2 2

105 Ngati Pu Place, Whangamata

Deadline Sale 3pm, 12 November 2024 (unless sold prior)

- A beautifully presented property
- Open plan living space
- The deck offers alfresco dining for summer gatherings
- Excellent indoor/outdoor connection

View 2.30pm Saturday 26 Oct & Sunday 27 Oct



Nancy Millett
M 021 517 708

View Listing whanga.co/8389



Holidays Made Easy

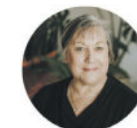
2 1

20/415 Port Road, Whangamata

\$445,000 + GST (if any)

- Situated at the Palm Pacific Resort & Motel
- Selling fully furnished
- Resort-style amenities right at your doorstep
- Very close to the town centre & cafes

View by Appointment



Nancy Millett
M 021 517 708

View Listing whanga.co/8366



A Great Starter Package

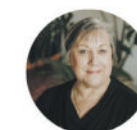
2 1 1

112D Ngati Pu Place, Whangamata

\$690,000

- Located in a quiet neighbourhood
- Open plan living with north facing aspect
- Ample off-street parking
- Ideal for first-time buyers, retirees, or investors

View 1.30pm Saturday 26 Oct & 1.30pm Sunday 27 Oct



Nancy Millett
M 021 517 708

View Listing whanga.co/8359

Whangamata Real Estate

WHANGAMATA REAL ESTATE 2024 LTD (LICENSED REAA 2008)

Don't just dream it, live it



Sitting Pretty

216 Russell Bruce Place, Onemana

3 1 2

Enquiries Over \$1,150,000

- Recently renovated property
- An easy stroll to Onemana beach, cafe and playground
- This property enjoys all day sun
- North facing deck area boast lovely ocean and island views
- Open plan living with spacious kitchen
- Double garaging with internal entry
- Freehold site

View 1pm Saturday 26 Oct & Sunday 27 Oct



Julian West
M 027 222 4364

View Listing whanga.co/8371



First Time to the Market

226 Onemana Drive, Onemana

2 1

Enquiries over \$1,450,000

- Prime position in Onemana
- Slightly elevated with a sunny north facing aspect
- Beautiful reserve, beach, ocean and outer island views
- Spacious beach facing sunny deck
- Open plan living, kitchen and dining
- Freehold title 522sqm site, flat to gentle slope
- Off road parking
- Only 10kms to Whangamata.
- Secure now and be in for summer!

View 12pm Saturday 26 Oct & Sunday 27 Oct



Julian West
M 027 222 4364

View Listing whanga.co/837



The Pick of Ngati Pu

104 Ngati Pu Place, Whangamata

3 1 2

\$950,000

- Very well presented property
- Separate generously sized lounge, modern kitchen
- Dining room with a heat pump for those winter mornings.
- Separate laundry, separate toilet, separate bathroom
- Lockup single entry garage/workshop plus cabin style sleeper
- Very nicely set out grounds featuring easy care garden plots, natives and fruit trees
- Fully fenced, garden shed, firewood storage

View 11am Saturday 26 Oct & Sunday 27 Oct



Julian West
M 027 222 4364

View Listing whanga.co/8269

Whangamata Real Estate

WHANGAMATA REAL ESTATE 2024 LTD (LICENSED REAA 2008)

Don't just dream it, live it



Rather Rare Opportunity "Section"

160 Bambury Place, Onemana

Enquiries over \$560,000

- Camp, glamp, landbank, develop - you choose
- Not often do sections in Onemana come to the market
- 889sqm (more or less) freehold land
- Utility shed with shower and toilet
- A good solid container, garden shed plus a little sleeper
- Location at the end of a cul-de-sac, down a right-of-way
- Privacy guaranteed
- The site enjoys good sun early afternoon through to summer sunsets

View by Appointment



Julian West

M 027 222 4364

View Listing whanga.co/8361



Hilltop Holidays

441 Onemana Drive, Onemana

3+ 3

Enquiries Over \$975,000

- Panoramic ocean, island and rural views
- Charming two bedroom cottage
- Modern kitchen and bathroom
- Generous open plan living with cosy woodburner
- Great sun aspect
- Two bedroom cottage
- Serviced sleepout + 2 x separate cabins
- Multiple outdoor entertaining options
- Freehold 593sqm full site

View 11am Saturday 26 Oct & Sunday 27 Oct



Sarah Speedy

M 027 843 4013



Julian West

M 027 222 4364

View Listing whanga.co/8332



Onemana Seaside Charm

120 Onemana Drive, Onemana

3 1 2

\$1,050,000

- North/east facing aspect captures all day sunshine
- Expansive deck area complete with a retractable electric sunshade
- Open plan kitchen and dining, spacious lounge
- Polished timber floors, raked timber ceilings
- Sun-drenched sunroom
- Elevated view towards the ocean and Onemana village
- Easy and flat walk down to Onemana beach, tennis courts and cafe

View 2pm Saturday 26 Oct & Sunday 27 Oct



Sarah Speedy

M 027 843 4013



Julian West

M 027 222 4364

View Listing whanga.co/8339



Whangamata Real Estate

WHANGAMATA REAL ESTATE 2024 LTD (LICENSED REAA 2008)

Don't just dream it, live it



Starter Package or Weekend Escape

1 1 1

121 Waireka Place, Whangamata

\$670,000

- 809m² elevated site offering harbour and bush views
- Utilise now and develop the potential later
- Cul-de-sac street with direct access to kauri reserve
- 1 bedroom portalodge plus caravan and separate serviced utility

View 12pm Saturday 26 Oct



Colin Thompson

M 021 723 723

View Listing whanga.co/8380



Priced to Sell - Act Now

2 1 1

500A Port Road, Whangamata

\$785,000

- Excellent sunny corner site with dual driveways
- Easy walking distance to town centre and cafes
- Open plan living area and 2 double bedrooms
- Attached single garage with auto opening door

View 11am Sunday 27 Oct



Colin Thompson

M 021 723 723

whanga.co/8246



Live The Lifestyle

4 2 2

11 Titoki Lane, Whangamata

Price by Negotiation

- New architectural designed build will surely impress
- Adjacent to 18 hole golf course with cafe and clubrooms
- Superbly appointed kitchen and scullery
- Large living area opens onto covered alfresco area

View by Appointment



Colin Thompson

M 021 723 723

whanga.co/8283



Bang for Buck on Barbara Avenue

1 1

Unit 9 106 Barbara Avenue, Whangamata

\$499,000

- Lock and leave apartment lifestyle
- Nicely elevated unit with pleasant outlook
- Open plan lounge and dining with balcony access
- Convenient Body Corp management & maintenance

View 10am Saturday 26 Oct



Sarah Speedy

M 027 843 4013

View Listing whanga.co/8395



A Great Starter Package

2 1

108B Everitt Crescent, Whangamata

\$782,000

- Close proximity to the upper harbour
- Open plan living with north facing aspect
- Separate study or third bedroom
- Ample off-street parking

View by Appointment



Teal-Brae Cooney

M 027 420 1574

View Listing whanga.co/8393

ONEMANA FAMILY FUN DAY
VENUE: ONEMANA RESERVE

SATURDAY OCT 26
10AM TO 1PM

PRIZES
BEST-DRESSED TEDDY BEAR COMPETITION

PRIZE FOR BEST DRESSED TEDDY BEAR

GAMES & FUN ACTIVITIES FOR ALL AGES

ALSO INCLUDING ONEMANA INFORMATION DAY
FIND OUT ABOUT...
 Surfclub
 Fire Service
 Weedbusters
 Beachcare
 Pools
 Dotterels
 Events
 and more...

FOOD & DRINK AVAILABLE FOR PURCHASE

IF INCLEMENT WEATHER ON THIS DAY, THE FAMILY FUN DAY WILL TRANSFER TO SUNDAY OCT 27

Proudly sponsored by BAYLEYS Carol Hatton Bayleys Whangamata NEW WORLD frucor

WHANGAMATA HARBOUR CARE
 INCORPORATED 1997
 Helping Nature Restore

Whangamatā Spring Clean 2024

The Spring Clean is coming soon
Saturday 2nd November 1pm - 3pm.

Volunteers needed - come and help us

The plan is to tackle the key areas where litter gathers along our harbour and estuary edges. We will be working on the Otahu estuary, the Moana Anu Anu estuary, the causeway edges and the Beach Rd shoreline.

There will be two assembly points as per below;
Otahu Estuary - Kotuku Road boat ramp
Hetherington Road - Humphrey the Sea Lion carpark

At each assembly point there will be a coordinator who will do a brief safety briefing and then assign people to different areas to ensure each area is well covered. Bags will be provided and participants need only bring themselves and gloves if desired.

Afterwards, all are welcome to congregate at the Sea Lion car park for a free BBQ and the opportunity to view displays and exchange stories of the variety of rubbish found. There may well be a spot prize for the most unusual item found.

For further information, visit the Whangamata Harbour Care Facebook page.

A big thank you to all our community sponsors & supporters

CLASSIFIEDS

GARAGE SALES

GARAGE SALE: 117 Tamaki Road, Whangamata

Sunday 27 October from 8:30am to 12:00pm

Fridge, children's toys, books and women's clothing.

GARAGE SALE: 207 Rangi Rd, Saturday 9-2, Sunday 9-2

Clothes, toys and more.

Treasure Trove Huge Garage Sale

LABOUR WEEKEND SATURDAY & SUNDAY

Come treasure hunting...

• Appliances • Clothing (lots of labels) • Decor • Furniture • Toys

SOUTH PACIFIC MOTEL & CONFERENCE CENTRE

Port Rd, for early viewing by appointment call Carly & KB (07) 865 9580

WANTED TO BUY

CAR

xxx

DEATH NOTICE

Tony 'Radar' Rea

Died suddenly October 12th.

Much loved brother of Chris, son of Des and Lyn, uncle of Hannah and Mitch.

Much love, rest in peace little brother.

PUBLIC NOTICES

GT FALCON
 CLUB OF NEW ZEALAND INC

SHOW & SHINE DISPLAY

Free Admission

Saturday 2nd November 9.15am to 12pm

Whangamata Club Carpark
 404 Port Road

Proudly sponsored by Ocean Ford Whakatane

Recycling at Info Centre

Good news for drinks and liquid carton recycling in Whangamatā... A collection point is now installed in our Information Centre for 7 day drop off access.

Please cut open flatten and wipe clean first. We will empty often and forward to a recycling centre where it is made into construction wallboard in Hamilton.

Also, a big thank you to the Whangamata Sunday market crew for their generous donation of \$300 for our e-waste transportation costs to assist the Whangamatā resource recovery trust in our weekly service.

Only the BEST TRADIES will do! Use Locals... For Locals... Support Locals!

SCAFFOLDING

ASP ACTIVE SITE PARTNERS
SCAFFOLDING | SHRINK WRAP
TEMPORARY FENCING

027 611 6822
bradley@activesite.co.nz
www.activesite.co.nz
211 Peacockes Rd, Hamilton

SITWISE GOLD 2023/24

SMALL ENGINE REPAIRS

ANTS REPAIRS

Whangamata-based small engine repairs & maintenance

- Chainsaws
- Lawnmowers
- Ride ons
- Weedeaters

121 Sharyn Pl • 021 0244 2791
ants.repairs.nz@gmail.com

LANDSCAPING

Beach Contractors
Landscape Supplies

LANDSCAPING SUPPLIES:

Bark, mulch, compost and topsoil	Sand, lime chip, river stones and pebbles	Cement, builder's mix and a range of metals
----------------------------------	---	---

Delivery service available

Whangamata Yard: 2546 Waihi Whangamata Rd, M. 027 261 1262
Waihi Beach Yard: 691 Waihi Beach Rd, P. 07 863 5340

PAINTER & DECORATOR

BOOF BOLAND
PAINTER & DECORATOR

M: 0274 367 254
E: jenboof@outlook.com

Master Painters New Zealand

PAINTER & DECORATOR

Gavin Johnson
PAINTER & DECORATOR

Interior/Exterior Painting
Wallpapering
Cedar Cleaning and Restoration Service

BRUSH STROKES
PAINTERS & DECORATORS
PH 0224 552 363 WHANGAMATA

0224 552 363
brushstrokeswhangamata@gmail.com

GLAZIER

Baker Glass & Glazing Ltd
"Craftsmanship with care"

- Glass Repairs
- Shower Glass
- Splashbacks
- Balustrades
- Retro-fit Double Glazing
- Insurance Quotes

Member AMN Masterglaziers network
Proudly supported by Metro Glass

METRO
PERFORMANCE GLASS

Contact 021 514 497 | glass@bakerjoinery.co.nz

LAND DEVELOPMENT

Birch
LAND DEVELOPMENT CONSULTANTS

Subdivisions
Boundary Markings
Land Use Consents Topographical Surveys
Building Setout and Certifications

Contact us
0508 4 BIRCH
tairua@birch.nz
244 Main Road, Tairua
www.birch.nz

IT SUPPORT

Boot it.

FIBRE INTERNET
now available to order from Boot I.T.

We are the Coromandel's only local Fibre Internet Provider, and the ONLY provider that offers 7 days per week support.

Call us on 0800 242 266 to find out more.

EARTHWORKS

Blackhill
EARTHWORKS

- Bobcat & excavator
- Tight access work
- Site works
- Topsoiling
- Driveways
- Hole drilling
- Concrete prep
- Cartage

Shay 021 742 966 | www.blackhillearthworks.co.nz
info@blackhillearthworks.co.nz

CONCRETE

BROWNMORE
CONSTRUCTION
CONCRETE CONTRACTORS

Any Concrete Requirements: Slabs, driveways, patios, paths, etc
All types of concrete - colour - finish
Council Permits for Vehicle Crossings
Excavation to finished product • Saw cutting & drilling

We take pride in doing a quality job at a competitive rate

REX: 027 285 5489
P. 07 863 3364 • office@brownmoreconstruction.co.nz
www.brownmoreconstruction.co.nz

DIGGER & CARTAGE

COAST DIGGER & CARTAGE

- Digger & Tip Truck Hire
- Driveways
- Building Digouts
- Site Works
- Concrete removal
- Track work
- Hole Drilling
- Tree Felling & Removal

Murray Clarke 027 2010 209
muzzclarke66@hotmail.com

FENCING

RURAL FENCING • RESIDENTIAL FENCING
POST AND RAIL • RETAINING WALLS
POLE SHED BUILDINGS
ORCHARD BUILDS & MAINTENANCE

coastline
FENCING LTD

BLAIN TEMPELMEYER 027 784 6538
coastlinefencing7@gmail.com

Use Only the Best Services in our Community! Use Locals... For Locals... Support Locals!

PAINTER



Coastline Property Painters

Protecting your investment Communication is everything
 ■ Interior ■ Exterior ■ Roofs ■ Updates & photos as your job progresses

Call Richard Upton: 0274 884 881 / www.coastlinepropertypainters.com

OUTDOOR COVER



Covered.

- Louvres
- Privacy Panels
- Awnings
- Sails

LOUVRESYSTEMS

info@covered.co.nz 07 865 6207 or 027 497 1236
www.covered.co.nz 300 Casement Rd. Whangamata

CURTAINS / BLINDS



Specialising in:

- Curtains
- Roman Blinds
- Cushions
- Duvet Covers
- Roller Blinds
- Shutters

croft design

306 CASEMENT ROAD, WHANGAMATA
 M. 0274 481 957 | E. beth@croftdesign.co.nz

CURTAINS / BLINDS

Curtains and Blinds and More
 Whangamatā

LOCALLY OWNED AND OPERATED

- Curtains
- Venetian Blinds
- Roller Blinds
- Romans Blinds
- Shutters
- Honeycomb Blinds

100% Mobile Service
 We come to you, Free Measure and Quote

Call Louize or Gavin
 on 027 4777 916
 or email info@curtainsandblinds.co.nz

FRAMING



• Picture framing

• Framed mirrors

• Art installation

• Pick up & delivery

Frames NZ

Ade Cunningham
 M. 0274 929 695 or P. 07 575 9149
info@framesnz.co.nz • www.framesnz.co.nz
 118 Brook Pl, Whangamata

HANDYMAN

HANDYMAN

30 yrs experience, specialising in:

- Bathroom, deck & building repairs
- Gib fixing & plastering
- Interior /exterior painting

Please ring Rex on 021 997 428

BUILDING & LANDSCAPING



HBL HANSEN BUILDERZ
 BUILDING & LANDSCAPING

COMMITTED TO EXCELLENCE

Contact us to discuss your project & a free estimate today

ADRIAN 0274 263 895 | hansen.builderz@gmail.com | HBLHomesnz
 Residential | Commercial | Alterations | Additions

ARCHITECTURAL BUILDERS

HOME & Lifestyle

- Architectural Builders
- Interior & Colour Design Services
- Project Management

For trusted expertise with your building project

Katrina Jackson 027 273 0685 | Leigh Goodman 027 4475 423
info@homeandlifestyle.co.nz

BUILDING WASHING

HOUSE WASHING

Exterior house or commercial building wash, roof wash, fences, driveway, patios – soft-wash for best moss and lichen clean and treatment, exterior window cleaning, or general water blasting, 100m of hose so access is no problem

Prompt local service with 20 years' experience

Ph 0800 747 787 email atlasgroup@xtra.co.nz
 or dial Andy direct on 027 313 4386

CLEANING



Jae

we'll take care of it

- Carpet Cleaning
- Pest Control
- Flood & Fire Restoration
- Stain Removal
- Upholstery Cleaning

07 863 8358 or 0800 225 552
whangamata@jae.co.nz 50 YEARS

AUTOMOTIVE & BOATS



JCD CUSTOMS & MARINE

BOAT TRAILERS, CARS, CLASSIC & HOT RODS

ONLY **Repco** STOCKIST IN TOWN!
 ONLY **HONDA** AGENT IN TOWN!

Aickin Road, Whangamata (next to Bunnings)
 P. 865 9073 | E. office@jcdcustoms.co.nz
 Mon-Fri from 8am

TRAVEL BROKER



Kay Gregan
 TAA NZ BONDED Travel Broker & CLIA Accredited Cruise Specialist

THE TRAVEL BROKERS
 a member of **hello world TRAVEL LIMITED**

AWARD-WINNING TAA NZ BONDED TRAVEL BROKER
 Travel Broker & CLIA Accredited Cruise Specialist
 Whangamata 07 865 9568 | M: 027 337 6222
Kay.Gregan@thetravelbrokers.co.nz
thetravelbrokers.co.nz/kaygregan

BUILDER

Keith the Builder LBP

Need something done?
 For maintenance, decking, fencing, repairs, interior work and all enquiries



PHONE FOR FREE QUOTE
 Keith phone 0272 262 039

ELECTRICAL

For All Your Electrical Needs



Electrical Laser
 "Totally Dependable"

Now Open In A Second Location
 Introducing Laser Electrical Waihi

WAIHI 07 863 7746 WHANGAMATA 07 865 9309
waihi@laserelectrical.co.nz whangamata@laserelectrical.co.nz
 40B Kenny Street 100 Lindsay Road

KITCHENS

McBeth Rd Orchard Joinery
 Affordable joinery

Kitchens new or upgraded
 Laundries & bathrooms
 Wardrobes & storage units
 Free estimates

Tony & Nicky Ball - 027 229 2255
 Whangamata

Only the BEST TRADIES will do! Use Locals... For Locals... Support Locals!

BUTCHER

MEAT AT THE BEACH

- Specialty Cuts • NZ Home Grown Meat only
- In-Store made Sausages • Home of Whanga Bacon, Whanga Black Pudding & Ham on the Bone!

Get in to order your Christmas Ham

601 PORT ROAD, WHANGAMATA P. 07 865 7241
MON-FRI 8.30AM-5PM • SAT 8.30AM-3PM

BUILDER

MJC BUILDERS

Building with pride

- FENCING
- DECKS
- PERGOLAS
- ROOFING
- ALTERATIONS
- BUILDING REPAIRS
- CONCRETE DRIVEWAYS
- FULL LANDSCAPING



MIKE CUNNINGHAM M. 021 0677 555
E. mjc.builder.whangamata@gmail.com

TREE SPECIALIST



QUALIFIED ARBORIST

30 years experience in all aspects of tree work

- Pruning
- Felling
- Storm damage
- Hedge trimming
- Confined space dismantling
- Debris chipped
- Free quotes and more

Professional and reliable service - fully insured

Phone Greg Nicholson on 07 865 6769 or 021 133 0937
email: nicholsonsreeservices@hotmail.com

PODIATRY

Pedicare Services

Professional Foot Care

Alison Walkington
Registered Nurse

Home visits by appointment



Mobile 027 663 2320 or
email alison.c.walkington@gmail.com

PHOTOGRAPHER

Pete Stretch PHOTOGRAPHY

Family portraits • Weddings • Corporate

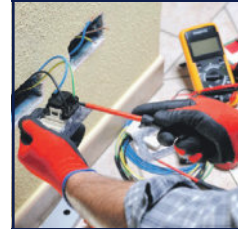
027 458 1179

peterstretchphotography@gmail.com

20% off all family group sessions
until 30th September 2024

ELECTRICIAN

PITCHER ELECTRICAL



YOUR TRUSTED
MASTER ELECTRICIAN
working in Whangamata,
Opoutere, Onemana and
Whiritoa

RESIDENTIAL AND
COMMERCIAL SERVICES

TONY PITCHER 0274 589 573

WINDOW CLEANING



Your
ecofriendly
window
cleaning
service.

Mike Horton
info@purenclean.co.nz

M 021 501 324
www.purenclean.co.nz

HEAT PUMPS



We Sell and Service all Major Brands

Your heat pump specialist
On site marine & commercial refrigeration

Call today for a hassle-free quote

027 933 8599

www.reefrefrigeration.co.nz

ROOFING



RIKKI ROOFING
we aim for the roof shout

Rikki Daysh, Owner/Operator
022 408 8424

rikkisroofing@gmail.com

- ▶ Residential re roofs & new roofs
- ▶ Spouting
- ▶ Cladding
- ▶ Maintenance & re screws

PLUMBER

Russell CHOAT GAS & Plumbing

Whangamata

FOR ALL YOUR GAS-FITTING, PLUMBING,
DRAINAGE & ROOFING REQUIREMENTS

Registered craftsman & member
of Master Plumbers

M. 0274 714 869 E. office@choatsplumbing.co.nz

ELECTRICIAN / DOG GROOMER



Rusty Sparks

EVERYTHING
ELECTRICAL

Residential, Commercial,
Data, Alarms

021 800 017

admin@rustysparks.nz



PIMPED
PUPS
GROOM
ROOM

021 850 017
WHANGAMATA

WINDSCREEN REPAIRS

MONDAYS:
RSA Carpark
Whangamata

TUESDAYS:
Fresh Choice
Carpark
Waihi



André Gillbanks
Phone 021 617 664

Chip Repairs
Windscreen Replacements
Insurance Claims Arranged

ARBORIST & FIREWOOD

SHORT BACK 'N' SIDES LTD

Arboricultural Contractors

TREE PROBLEMS?

Dismantle, pruning, removal, stump grinding. BIG or SMALL - we do them ALL!

0274 390 367

www.shortbacknsides.co.nz

FIREWOOD

Available all year round. Smoking chunks or dust, kindling, bagged wood. Delivery available or pick up on Fridays from 15 Dean Cres, Waihi. Gold Card discounts. Also 100s of native and exotic milled slab timber, garden mulch, smoking wood.

0274 390 367 or our firewood hotline 022 043 1862



BUILDER



RESIDENTIAL SERVICES

LBP Builder / Renovation Specialist

07 865 6555 / 027 238 1659

skfrs@xtra.co.nz

Use Only the Best Services in our Community!

Use Locals... For Locals... Support Locals!

BINS

Skip Bins, Wheelie Bins, Front Load Bins

Contact us today! *We can help!*



0800 4 MY BIN - www.smartbins.co.nz

Proudly 100% Kiwi owned

BOARDING KENNEL / CATTERY



SPOT X Quality care and facilities in a rural setting

Office hours: 9am-12 noon and 3-5pm daily
INSPECTION WELCOME
Ph 07 865 8242 or 027 624 3890
Annette Gillatt
4km south of Whangamata on the main road

BOARDING KENNELS AND CATTERY

DRIVING LESSONS




Helping young people to drive safely and intelligently.

Thames Driver Training

Book online at thamesdrivertraining.co.nz
Gavin Buchanan - Thames Driver Training
027 268 6381

REFRIGERATION & AIR CON



TIDELINE REFRIGERATION
WHANGAMATA

- * HEAT PUMPS
- * REFRIGERATION
- * AIR CONDITIONING
- * VENTILATION

SERVICING IN THE COROMANDEL AREA
0272121994 - 0277251820
TIDELINEREFRIGERATION@GMAIL.COM
WWW.TIDELINEREFRIGERATION.COM

PAINTER



TOTAL PAINTING SOLUTIONS

CALL LEE ON 0275 656 336
Lee.tpms@gmail.com

30 Years of Interior & Exterior Painting
Delivering High-Quality Service with Exceptional Results

ARBORIST



- Professional experienced and insured arborist
- All tree work including removal / pruning
- Hedge trimming and property maintenance
- Quality firewood and smoker wood

Heath van Leeuwen 0210 838 9922
email Heathsvan@gmail.com

TREE SPECIALIST



- Tree felling & pruning
- Hedge trimming
- Stump grinding
- Fully insured
- Qualified arborist

TREECARE WHANGAMATA LTD
Contact Ben 021 827 355
trecarewhangamata@gmail.com

LAWYERS

USSHER LAWYERS

- SINCE 2007 -

We can help with all of your general legal needs

- Conveyancing if you are buying or selling property
- Sale and purchase of business assets • Commercial leasing
- Relationship property • Trusts • Wills • Enduring powers of attorney

www.ussherlawyers.co.nz | Phone 07 865 8824
We've moved - now at 123 Lindsay Rd, Whangamata

WARDROBES



Steve Parkinson
Central, East & South
021 0733 100
steve@wardrobesdirect.co.nz

ALSO SERVICING WHANGAMATA
www.wardrobesdirect.co.nz

Showroom and office:
175 Marua Rd
Mt Wellington

LAUNDRY

WHANGA LAUNDROMAT



The only locally owned & operated laundromat in town!

OPEN 24 HOURS - 7 DAYS A WEEK
CASEMENT RD, WHANGAMATA (OPPOSITE WAITOMO FUEL)

SCAFFOLDING



- Mobile scaffolding
- Roof edge protection
- Construction scaffold

Servicing Whangamata and surrounding areas

Please ring 022 076 0160 or email whangamatascaffolding@gmail.com
102 Lindsay Road, Whangamata Est 2014

TYRE & BATTERY SERVICES



WHANGAMATA TYRE & BATTERY

Car tyres / Wheel alignment
4WD tyres / Tyre repair
Wheel balance
Small implement tyres
Batteries - car & marine

KUMHOTYRES 7
Phone Simon 865 7698

CHALLENGE Cnr Port & Ocean Rd, Whangamata
www.challenge.net.nz

WINDOW & DOOR SERVICES



WHANGAMATA WINDOW & DOOR SERVICES

Bryce Hall
M. 027 282 2057
Ph. 865 9714

Reglaze // Repairs // Maintenance
Retro Fit Double Glaze

whangamatawindowdoorservices@extra.co.nz

HOME SERVICES



YourLocal
NZ's Trusted Home Services

Avi@yourlocal.nz • www.yourlocal.nz • 022 534 5478

We specialise in

- Exterior house wash, windows, driveways, patios, decks, fences & roofs - Commercial, residential, rural, new builds & painters prep - Pests treatment (fumigation)
- Rodents & wasps - Chimney sweeping - Roof treatments

BUSINESS FRANCHISE FOR SALE

We cover Coromandel, Thames, Waihi, Waihi Beach, Whitianga, Whangamata

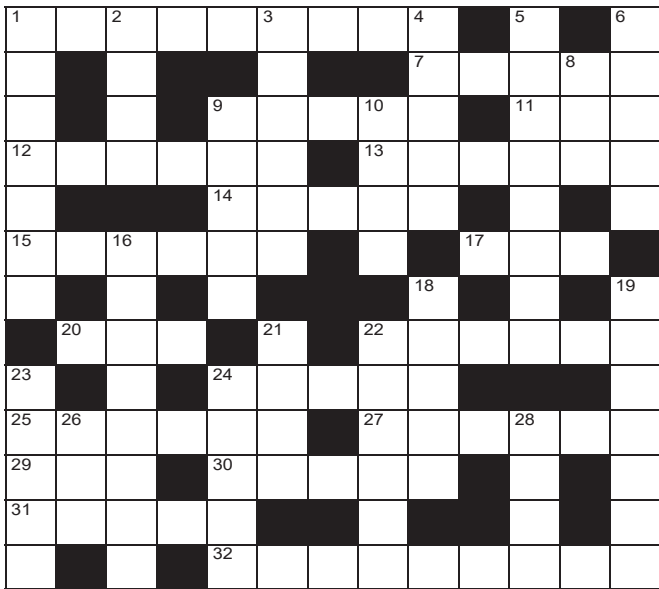
CLOTHING

YUKEYS
3620

Clothing Alterations and Repairs
LADIES - MEN - CHILDRENSWEAR

Open Tuesday to Friday 8.30am to 1.30pm
Saturday 9am to 12pm
105 Aickin Road (just off Port Road)
Whangamata
M. 021 0289 3968

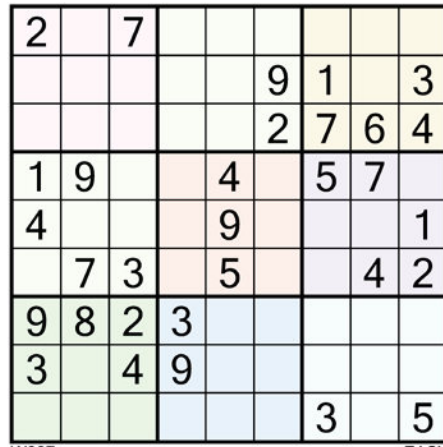
QUICK CROSSWORD



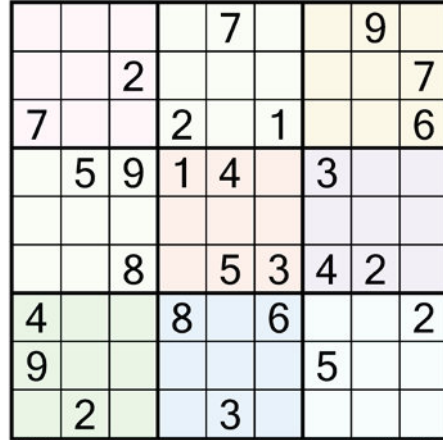
- Across**
- Large marine predator (9)
 - Lightweight wood (5)
 - Food on a stick (5)
 - Short-lived craze (3)
 - Firearm loading stick (6)
 - Origin (6)
 - Correct (5)
 - Neck adornment (6)
 - Pompous fool (3)
 - Animal house (3)
 - Nap (6)
 - Sceptic (5)
 - State emphatically (6)
 - Wolf-like (6)
 - Swamp (3)
 - Go in (5)
 - In a higher position (5)
 - Top university degree (9)
- Down**
- Basic principles or truths (7)
 - Paper measure (4)
 - Film acknowledgement (6)
 - Head monk (5)
 - In the open air (8)
 - Weary (5)
 - Pouch (3)
 - Sacred book of Islam (5)
 - Like burnt powder (4)
 - Force Majeure (3,2,3)
 - Bring upon oneself (5)
 - Daydream (7)
 - Song of praise (4)
 - Noiseless (6)
 - Secret political clique (5)
 - System of beliefs (5)
 - Watch chain (3)
 - Greek letter (4)

SUDOKU

Fill the grid so every row, column and 3x3 box contains the numbers 1-9



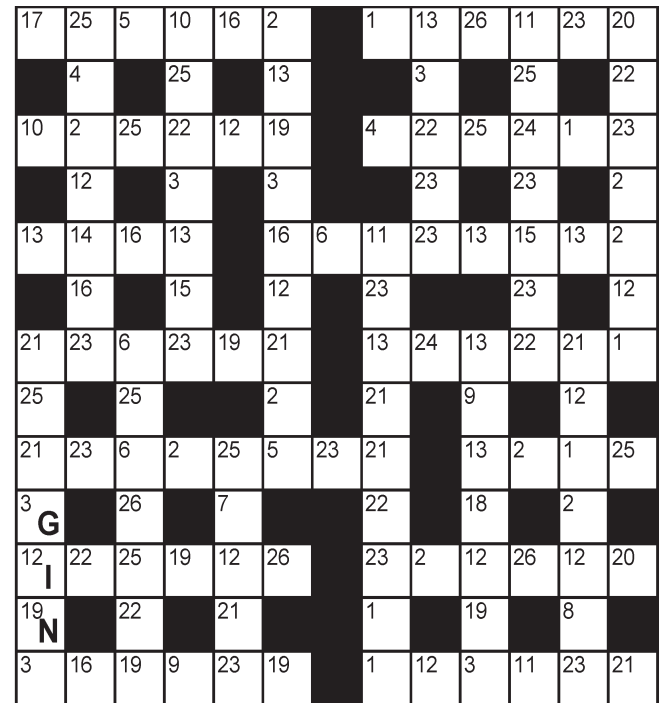
W227 EASY



W228 HARDER

DECODER

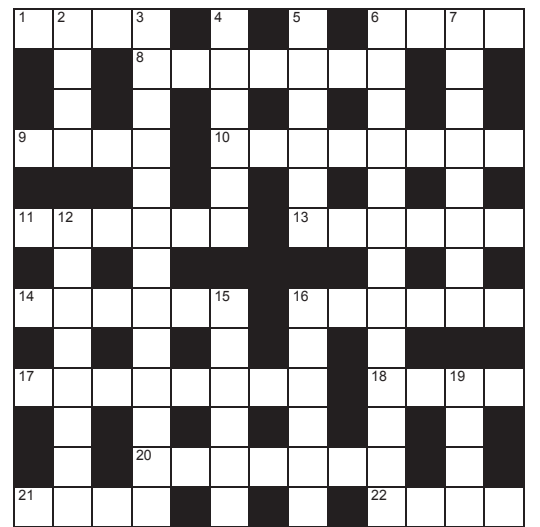
Each number below represents a different letter. Find the correct letter for each number by working out the word from the letters given. To keep track, cross the letters off on the grid below.



A	B	C	D	E	F	G	H	I	J	K	L	M	N	O	P	Q	R	S	T	U	V	W	X	Y	Z
1	2	3	4	5	6	7	8	9	10	11	12	13													
						G																			
14	15	16	17	18	19	20	21	22	23	24	25	26													
										N															

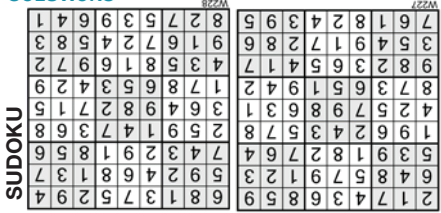
CRYPTIC CROSSWORD

- Across**
- Rugby player used on stage (4)
 - Issue discovered when cabin boy loses coin (4)
 - Go over the terrace again (7)
 - Amuse flasher maybe, but not the full monty (4,8)
 - Spot twitch in vinegar acid (6)
 - Disaster for the seamstress? (6)
 - Crept imperially (6)
 - Picky, so lad leaves dayschool troubled (9)
 - Crier fit? Yes – Fantastic! ... (8)
 - ...and cute in between calls (4)
 - This clue maybe no more in France (7)
 - Bird extension (4)
 - Press down to thank the member (4)
- Down**
- Graded in acting school initially (4)
 - Get some returns from hot spring fair (6,7)
 - When a cat is in charge it is minute (6)
 - Alma gets no parking around the fire jelly (6)
 - Teen out by cast for pretty big judgement (6,7)
 - Not as contemptible but with no foundation (8)
 - Cite font as origin of wedding droplets (8)

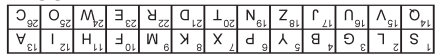


- How to counter de-parry (6)
- The sound of a witch's chook? (6)
- Former mother returned for test (4)

SOLUTIONS



DECODER



- Across:** 1. Prop, 6. Baby, 8. Retrace, 9 & 10ac. Half measures, 11. Acetic, 13. Mayhem, 14. Inched, 16. Choosy, 17. Traffic, 18. Twee, 20. Nonplus, 21. Wing, 22. Tamp.
- Down:** 2. RADA, 3. Profit sharing, 4. Atomic, 5. Napalm, 6. Beauty contest, 7. Baseless, 12. Confetti, 15. Defend, 16. Cackle, 19. Exam.

CROSSWORD

- Across:** 1. Barracuda, 2. Ream, 3. Credit, 4. Abbot, 5. Affresco, 6. Jaded, 8. Sac, 9. Koran, 10. Ashy, 16. Act of God, 18. Incur, 19. Reverse, 21. Hymn, 22. Silent, 23. Cabal, 24. Creed, 26. Fob, 28. Iota.
- Down:** 1. Bedrock, 2. Doctorate, 30. Enter, 31. Above, 27. Lupine, 29. Bog, 24. Cynic, 25. Affirm, 20. Sty, 22. Snooze, 15. Cravat, 17. Ass, 13. Source, 14. Right, 11. Fad, 12. Ramrod, 7. Balsa, 9. Kebab.

All puzzles © The Puzzle Company

Power and performance

TS142T
42" Deck, Hydrostatic Transmission, 25hp Husqvarna Series V-Twin Engine

SAVE \$750
\$6,240
\$6,990 RRP

Limited numbers **SPRING SPECIAL**

SAVE \$1000

TS142TXD
42" cut, V-Twin Kawasaki engine, pedal operated hydrostatic transmission, auto locking differential.

\$6,990
\$7,990 RRP

Offers valid while stocks last.

Q CARD
24 MONTHS INTEREST FREE*

LONG TERM FINANCE

*24 months interest free is available on Long Term Finance (LTF) for in-store purchases only until 31/12/2024. Min spend \$3,490. Lending criteria, \$50 annual Account Fee, fees Ts&Cs apply. \$55 Establishment Fee applies to your first LTF transaction, \$35 Advance Fee applies to subsequent LTF transactions. Min payments of 3% of the monthly closing balance or \$10 (whichever is greater) are required throughout interest free period. Paying only the minimum monthly payments will not fully repay the loan before the end of the interest free period. Q Mastercard or Q Card Standard Interest Rate (28.95% p.a.) applies at the end of LTF Interest Free Period. Rates and fees subject to change. Columbus Financial Services Limited and Consumer Finance Limited reserve the right to amend, suspend or terminate the offer and these Ts&Cs at any time without notice. Valid 01/09/2024 - 31/12/2024.

Shaun Prescott, Sales Manager
021 285 4870 / 07 864 7801
1 Hikuai Settlement Road, Hikuai
www.prescottsgarages.co.nz

5 YEAR DOMESTIC WARRANTY*
Terms and Conditions apply, see HUSQVARNA.COM for details.

We sell and service Husqvarna's huge range of product. We also demonstrate and deliver.

Visit husqvarna.com today