

PARADISE COAST

Whangamata NEWS

ISSUE 56 - 3 DECEMBER, 2021



FREE COPY
PLEASE TAKE ONE!

Dirt riders rule

PAGE 10

Levi, 7, from Whitianga tears up the Peewee track!
PHOTO BY MARK JAMES



STAGE TWO
is now underway

DETAILS PAGE 4

JOIN US! DONATE!

Donate to ANZ Account:
06-0457-0768992-00

'Toes in the Water Whangamata'



 LIKE US!

WE WELCOME YOUR CONTRIBUTIONS!
EMAIL WHANGAMATANEWS@GMAIL.COM
FACEBOOK@WHANGANNEWS

SEE ALL OUR EDITIONS LIVE AT
WWW.WHANGAMATANEWS.NZ
EDITORIAL & MEDIA SALES:
JENNIE BLACK - 021 0232 1661

Welcome to the first December 2021 edition of Whangamatā NEWS

- a magazine By Locals, For Locals, About Locals

Whangamatā NEWS

www.WhangamataNEWS.nz

EDITOR & SALES DIRECTOR

Jennie Black
Phone 021 0232 1661
WhangamataNEWS@gmail.com

PHOTOGRAPHER

Mark James
Phone 021 668 469

ART DIRECTOR

Anna Gledhill
WhangamataNewsArt@gmail.com

FREELANCE JOURNALIST

Cameron Scott

REGISTERED OFFICE

2666a Waihi Whangamatā Road
Whangamatā 3691

PUBLISHING

Printed by Inkwise NZ. Published by Whangamatā News 2021 Ltd

All content featured in Whangamatā NEWS Limited is subject to copyright in its entirety and may not be reproduced in any form without permission from the Publisher. Any material supplied for publication is at the submitter's risk. All information is believed to be true by the Publisher at the time of printing. Views expressed in Whangamatā NEWS Limited are not necessarily those of the Publisher.

Emergency numbers

For all genuine emergencies requiring Whangamatā St John Ambulance, Fire Brigade, Coastguard, Surf Life Saving or Police, **DIAL 111 immediately.**

Other useful numbers:

MENTAL HEALTH HELPLINE
1737

WHANGAMATĀ SURF CLUB
07 865 8401

WHIRITOA SURF CLUB
07 865 9045

ONEMANA SURF CLUB
Laurie 021 2666 114

WHANGAMATĀ POLICE
07 865 0300

ST JOHN AMBULANCE
07 865 9011

COROVETS - VET CLINIC
07 865 8109

WHANGAMATĀ MEDICAL CENTRE
07 865 8032

COASTGUARD
07 865 8800

HARBOURMASTER
021 594 563

THAMES-COROMANDEL DISTRICT COUNCIL, WGM
07 865 0060

WHANGAMATA COMMUNITY SERVICES TRUST
07 865 7065

We welcome your letters, articles, photos, news tips and advertising enquiries.

- We ask that articles be no more than 250 words, although exceptions can be made.
 - Photos should be high resolution and in focus.
- For editorial or photographic matters, phone Jennie on 021 0232 1661 or email WhangamataNEWS@gmail.com

INDEX

- Toes in the Water stage two; Police report
- Dire need for night ambulance
- Scott Simpson MP column; CFM radio pops up for summer beat
- Celebrate the artists
- E-waste drives coming; Brits at the Beach cancelled
- Twinkle Toes dance show
- Enduro Sprints a dirty race
- Colour, scent and skill
- Pinnacles of success; Bella and Travis lead the way
- Waireka Native Tree Reserve Working Bee with Lions
- Special people leave lasting footprints on our shores
- Volunteer of the Month; Fencing disputes
- Classifieds; sports results and tide guide
- Whangamata 'Flash' memories

PARADISE COAST
Whangamatā NEWS
SAVE THE DATES!

2022 DEADLINES FOR FORWARD PLANNING

Due to fantastic support from our community, readers and advertisers, Whangamatā News continues to publish TWICE MONTHLY. It is with pride that Jennie continues breaking the news!

DELIVERY

Friday, 31 December, 2021	New Year's edition
Friday, 7 January, 2022	
Friday, 21 January, 2022	
Friday, 4 February, 2022	Waitangi Day weekend edition
Friday, 18 February, 2022	

GLAUCOMA

A progressive vision condition that can lead to blindness.



Risk factors for developing glaucoma:

- Myopia
- Diabetes
- Thyroid disease
- Migraine
- Eye injury
- Family history of glaucoma

Glaucoma is known as the sneak thief of sight. To be sure that you, not your guide dog, are seeing what is important to you book your appointment today.

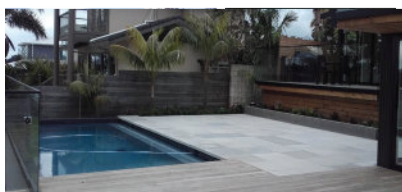
Visique O'Hagan Vision Care

612 Port Road, Whangamata • Phone 07 865 0007



See the difference

fusion
LANDSCAPE DESIGN
Creating Your Sense Of Place



For a free no obligation discussion contact Lynn 021 123 5650 or visit www.houzz.co.nz > fusion-landscape-design to view some of our previous work, discover more about Lynn, her company and read previous client comments

Your local and the only Registered Master Landscaper based on the Coromandel Peninsula

Scott Simpson

MP for Coromandel

Contact me anytime

0800 550 330
mpcoromandel@parliament.govt.nz
scottsimpson.co.nz
scottsimpsonmp



Authorised by Scott Simpson, 614 Pollen St, Thames.



For advertising queries contact Jennie Black

Editorial/Sales Director
Ph 021 0232 1661
jennieablack@gmail.com



ORANGE LIGHT

This applies when community transmission is putting pressure on the health system.

What happens?

- Record keeping and scanning required.
- Face coverings mandatory on flights, transport, retail, public venues and encouraged elsewhere.
- Public facilities, retail open with capacity limits, 1m distancing.
- Schools open with public health measures.
- Workplaces open.
- No regional boundary restrictions.

Venues using vaccine certificates:

- No limits on gatherings at events, retail, hospitality.

Venues not using vaccine certificates:

- Contactless pickup only for hospitality.
- Gatherings, weddings, funerals limited to 50 people with 1m distancing.
- No indoor or outdoor events.
- No gyms, hairdressers or close contact businesses.



We welcome your letters! Email to: whangamataneews@gmail.com

Townie reality check

Jeff Hayward (NZ Herald 22/11/21) questions the validity of farmer protests and asks what they intend to do about methane emissions and pollution of waterways.

Rather than making accusations of ignoring these issues, Hayward should conduct his own reality check. Farmers have invested heavily and continue to invest in riparian fencing and planting to protect waterways and are levied to cover the cost of research into methane mitigation measures.

There is wide acknowledgement of the plight of Auckland businesses and the crippling of the tourism sector means our primary industries will play a vital role in the recovery of our economy.

That is the reality.

George Williams
WHANGAMATA

Our footpath to nowhere

It is beautifully sculpted but its purpose is unclear. I stupidly thought that we were getting a footpath from the new pedestrian crossing that's going in on Ocean Road, to go into Williamson Park, turn right and meet up with the Park Road. This would then have enabled wheelchair and pram users access to not only the park, but also easy and safe access to the beach.

As it is, it seems to start from a grass verge and end up back on Ocean Road, the design of which I am told will make it safer for everyone. In its present design I'm not sure who will use it. Maybe a new skateboard path?

How anyone in a wheelchair will access it from Lowe Street corner (the busiest corner in



Whangamatā at Christmas)? I do not know, as there is no footpath on that side of the road. Plus wheelchair users really do prefer straight footpaths to travel on.

However, I am hoping that it is just the start of a great new footpath to go somewhere?

K. Baker
WHANGAMATĀ

TE-RA FISHING
~ Since 1989 ~

SUMMER TIMETABLE
26 DECEMBER - 31 JANUARY

Departing Whangamata wharf twice daily

8am-2pm & 3pm-8.30pm

\$60 Adult \$40 Child

\$10 Rod Hire

Bait Available

Have your catch filleted!

BOOKINGS:
Phone Chris or Karyn
022 643 2515
Email te_ra@outlook.com

Jordana Calala

Available in 4 colours

Tango's

Whitianga 07 866 4465 | Whangamatā 07 865 8088
WWW.TANGOSSHOES.NZ

OxiPay, Zip & Laybuy welcome.

Tyre specials

CHALLENGE Whangamata www.challenge.net.nz Cnr Port Rd & Ocean Rd, Whangamata

GOODRIDE

RP28 - A computer enhanced tread design for low noise and excellent water drainage. Silica technology for fuel savings and square shoulder design for better handling during cornering.

Goodride RP28
175/70/13..... \$79.90
175/65/14..... \$89.90
185/65/14..... \$89.90
195/65/14..... \$99.90
185/70/14..... \$89.90
185/60/15..... \$99.90
185/65/15..... \$99.90
195/60/15..... \$99.90
205/65/15.. \$109.90
205.55/16.. \$109.90

**Includes fitting and balancing. Case disposal additional.*

KUMHO

TA31 - The TA31 is designed to withstand the rigors of urban driving. It features a tread compound designed specifically for high performance as well as high levels of wet and dry traction for excellent handling and braking.

KUMHO TA31
195/60/15...\$149.90
185/65/15...\$149.90
185/60/15...\$149.90
205/65/15...\$149.90
205/50/17..\$179.90
215/45/17....\$169.90
235/65/17..\$229.90

**Includes fitting and balancing. Case disposal additional.*

PHONE SIMON 07 865 7698

Car tyres / Wheel alignment
4WD tyres / Tyre repair
Wheel balance / Small implement tyres
Batteries - car & marine

Stage Two is underway and we implore people to donate

Fantastic news – the first target of \$16,000 has been met to purchase the adult and child beach wheelchairs and the walker.

HERE'S THE UPDATE:

Dave Ryan, who is heading the Toes in the Water committee, explains "the second trial run was made last week, with a disabled person in the chair coming back off the soft sand and onto the boardwalk. It is still difficult to work with... that's why we really need 40 metres of beach matting to get traction."

The matting is \$20,000 for the 40 metres required. We also need a shed to house the chairs beside

the Whangamata Surf Club, and that must use galvanised metal framing to ensure longevity.

The shed is over \$16,700 and also will require a concrete pad put in underneath for the flooring.

So this is Stage Two: We need to raise another \$40,000.

The committee still has the trial chair and a sample of the matting, they just need more donations to get this all underway – and get the pad down hopefully just before Christmas. *Whangamata News* can not emphasise enough: this would make an incredible difference to a disabled persons life this summer.

HOW TO HELP

You can donate at any of the collection boxes at Whangamata Information Centre, Luv Coffee, Mums Corner Store, Smoky Pallet, 100% Whangamata, Unichem Whangamata, RSA, Whangamata Club and the Ocean Sports Club.

Or you can contact Dave Ryan on 0274 965 406 or email him on redryan1948@gmail.com.

You will also be able to donate at the Santa Parade Saturday, 4 December, from 3pm. Please get some cash out to give.

Pay it forward and help a disabled person put their 'Toes in the Water'. Better still, use the 'Toes in the Water Whangamata' ANZ account: 06 0457 0768992 00.



POLICE REPORT

Offending in Pauanui area



Waikato Police are investigating a spate of offending involving the theft of property from vehicles in the Coromandel Peninsula.

Overnight on November 17 to 18, there were 14 incidents of vehicles broken into around the Pauanui township.

Most vehicles were parked outside homes and in driveways where the offenders have entered the vehicles and rummaged through belongings, targeting cash and valuables and in one case taking a wallet.

Within hours the victim's bank card was then used in multiple transactions in Waihi to the value of \$450 and again in an attempt in Tauranga.

In most cases the vehicles were left unsecured on properties and Waikato Police would like to remind everyone to ensure their vehicles are secured and any valuable property is removed, Detective Sergeant Ben Norman said.

As we head into the summer season beachside towns across the Coromandel are likely to experience an influx of people. Police urge all residents and visitors not to be complacent. Make sure you lock your vehicles, park them off the road where possible and remove any belongings and valuables.

Police have also had recent reports of the theft of high-end boats.

"We encourage all boat owners to ensure their property is secure, use a wheel lock and remove expensive fishing and watersports equipment, and fuel tanks overnight."

Offenders regularly travel distances to target certain areas they believe maybe vulnerable and will take these opportunities for their own gain.

Police are following strong lines of inquiry to identify and locate these offenders.

It's also important that if you see something suspicious or feel something is out of place, you report it to police immediately via 111.

- Phillipa Yalden

RSA WHANGAMATA

**Open Tuesday to Sunday
4.30pm to 8pm**



**LUNCH, DINNER & TAKEAWAYS
Thai & European Cuisine
OPEN 6 DAYS Tuesdays to Sundays**

The Executive Committee, at its meeting, voted unanimously to designate the Whangamata RSA as a Vaccination Pass Venue.

We are required to follow all Government Legislation and Regulations and we will act on those as and when we receive them. This means that from the time the 'Traffic Light' System comes into place, you will need to be fully vaccinated to enter the RSA and scan your Vaccine Pass on entering the premises.

At this stage we will be going into the 'Traffic Light' System as at 11.59pm on Thursday 2nd December 2021.

This will mean that all Members, Guests, Staff, Contractors and Delivery Drivers entering the RSA premises will need to scan their Vaccine Pass, either paper form or on their phone.

P. 07 865 9419 @whangamatarsa www.whangamatarsa.com

Dire need for night ambulance services

How many Whangamatā residents have needed an ambulance at night?

Well, that's the question I asked when it came to light that there is no service here from 7pm to 8am. It borders on the ridiculous.

Whangamatā News caught up with local woman Sandra Perry, as she spoke of her concerns, so much so that she wrote to John Armitt, Territory Manager for St John Hauraki Coromandel. You can see his response beside this article.

Sandra found everyone she spoke to very helpful towards her belief, that there is no ambulance service available during night call outs.

John Armitt told her the problem was a shortage of volunteers.

"We are in the process of training some but because of Covid we are yet to start training the two or three people who have shown interest," he said.

So, although we have two ambulances here, locals end up waiting for urgent assistance at night from Paeroa, Waihi, Tairua or Thames.

Whangamatā man Murray Cleland, who recently had a fall in town one night, breaking his hip, said he lay on the ground for about two hours in the rain.

"I had help from friends who comforted me while they endeavoured to get an ambulance through the 111 service but it seemed they really didn't understand that help was required.

"In the end an ambulance came from Paeroa, but was delayed due to the fact they had to deal with another call on the way to Whangamatā."

I can add an experience I recently had with a friend, who dislocated her shoulder starting a weed eater. This is early afternoon, so taking her straight to Whangamatā Ambulance Bay (wearing masks of course), I saw an officer sitting in the sun on a chair behind two empty ambulances. He told me to stop, I asked if he had a wheelchair because my friend is now out on the footpath screaming in pain.

He said he did not and I would have to call 111. Incredible - I'm standing 10 metres from two empty ambulances! I couldn't believe my ears. Protocol or not, clearly he was not rushed off his feet.

Luckily, two volunteers came out of the station and all three gentlemen got it together to get my friend in the ambulance, medicated and off to Thames Hospital.

In essence, we need volunteers urgently - it can not be stressed enough, especially with our large proportion of over-65s in the community

How would you feel if your loved one was experiencing any complaint, life threatening or not, and couldn't get an ambulance locally in a timely fashion?

Yes, there are first responders who can get a doctor from the medical centre with the defibrillator for those types of emergencies.

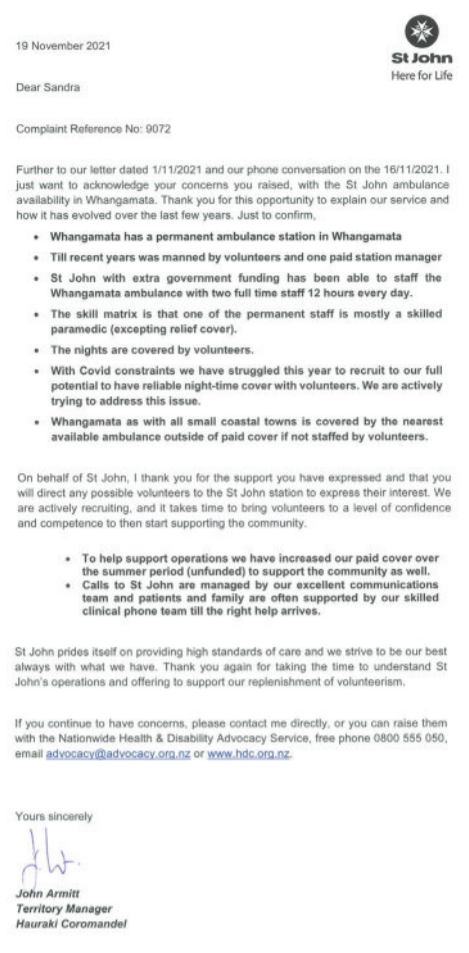
However, I am deeply concerned about the lack of volunteers - Covid-related training issues or not, people still need the lifesaving service here in this township.

As helpful as senior St John management has been, is the training underway as yet?

And will they service this area rather than outer areas over the hills?

My question is, should the government fund permanent or part time ambulance staff - is this the only way to get enough qualified personnel?

A 12-hour shift for any ambulance volunteer is stretching it - many people don't have 12 hours free. Eight hours seems more normal.



Whangamatā News welcomes anyone to write to The Editor on your experience, and I'm not knocking the wonderful people we have now, it's just not good enough at night to expect an ambulance which can be up to two hours to arrive.

- Jennie Black, Whangamatā News

Smart Buy furniture

Perfect pillows

Quality pillows with fill adjustment to suit personal comfort. Stain resistant fabric.

ONLY \$65 EACH



Jamieson suite 3 + 2 seater



NZ made and choice of fabrics.

Was \$3995 NOW \$3195

Wishing you a wonderful

Dream Season.

And very merry Sleepyhead savings.

50% off.

THE EXPERTS IN SLEEP

50% off. Chiropractic HD Queen Mattress & Base **From \$2949**

50% off. Chiropractic Prime Queen Mattress & Base **From \$2149**

419 PORT RD, WHANGAMATĀ PH 865 9027

(Across from the Post Office)

We deliver Waihi-Whangamatā



Vaccination status employment minefield to ensue

On one hand the Government today has attempted to simplify My Vaccine Pass verification with the launch of the NZ Pass Verifier app.

On the other, it opened up a potential employment relations minefield as Minister Michael Wood announced requirements for workers in businesses where vaccine mandates apply to be fully vaccinated against Covid by January 17, says National's Spokesperson for Workplace Relations, Scott Simpson.



"Business will welcome the extra tool to validate the vaccine status of employees but the threat of employers still being entangled in personal grievance or constructive dismissal actions remains.

"People who have their jobs

terminated because they are unvaccinated are highly likely to take legal recourse that will be both costly and time consuming for employers who just want to get on with doing business.

"National would give employers

protection from such actions as long as either this new tool or a formal health and safety risk assessment has been conducted.

"It's a pity the Labour Government has been so slow in establishing this new tool. They've had more than a year to consider it and leaving its introduction to the eleventh hour and rushing legislation under urgency is poor policy process."

Authorised by Scott Simpson MP, 614 Pollen Street, Thames

Radio pops up for summer beat

We Love It Here – might be our catch cry but it's especially true for Whangamatā. John and Lynda Grant are the local owners of Coromandel's CFM, local radio for and by local people. John and Lynda are residents of the Coromandel and have a long history and association with Whangamatā.

A family batch on Ocean Road across the road from Achilles Store where every summer was spent while their children were growing up provide a connection for the town "we spent many hours and days with the kids on Whangamatā Beach and the



a matter of time before finding a place to set up as a base in Whangamatā. It's been a challenge to find affordable premises in the right location, but we have set up temporarily in the old Jennian Homes office at 626 Port Rd, right next to the mini-golf.

John and Lynda also have shares in Coromandel Insurance Services, so it was a no-brainer to set up joint offices at this location. Pop by and say hello. Daily broadcasts will commence from 1 December so tune in on 95.1FM to hear about everything local and some great summer music from your own local station.



daily family walk along the beach and into town for an evening ice cream are just some of the great memories", say Lynda.

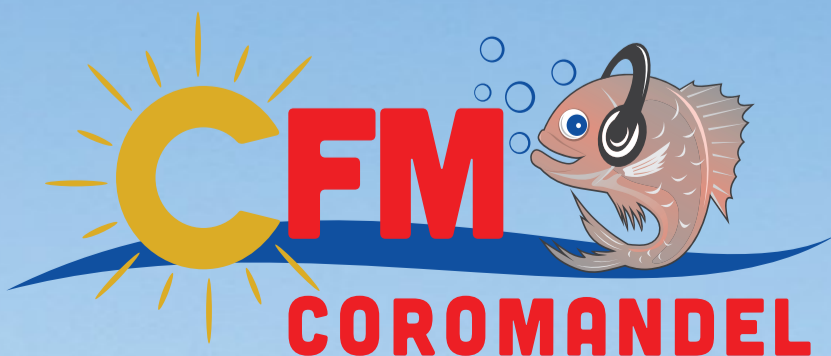
This love for the Coromandel made the decision to return and set up a radio station an easy one. Coromandel's CFM started broadcasts from Whitianga in

November 2018 and rapidly expanded so the signal can be heard around the Peninsula and from the Bombay's to Hamilton and across the Hauraki plains to Paeroa to give an audience potential of over 60,000 listeners.

With studios already in place in Whitianga and Thames it was just



PROUD TO BE LOCAL



95.1 FM

Celebrate the artists this Sunday

Art in the Park is nearly here! Artists and musicians will come together for a celebration of the Arts at Bushland Park on Sunday, 5 December, from 11am – 4pm. The new Traffic Light system will be in place and the Arts Collective committee will manage the event, according to the traffic light colour identified for Whangamata.

Bushland Park in the Wentworth Valley is idyllic and the perfect setting for a picnic. To enhance this, two food trucks, the Leveret wine stand and water spring stations will be on site. However, visitors should note it is not permitted to take their own alcohol on to the property, in accordance with the liquor licence.

The 34 artists from Whangamata, Whiritoa, Opoutere and Tairua reflect the diversity and vibrancy of the local arts scene, displaying many different art forms and some Christmas gift pieces. The art will be for sale, via cash or online banking. You will find the artists in the leafy boulevard and the village green of Bushland Park.

People are always hugely impressed by the really high standard of art within the Arts Collective artists and here we are excited to introduce three younger artists, who are relatively new to the Collective. Their work is colourful, bold and dramatic and will add plenty of 'zing' to the



Dianna Smith, Christina McGrath and Merel van den Nieuwenhuizen (Birdy).

exhibition: Dianna Smith; Christina McGrath and Merel van den Nieuwenhuizen (Birdy).

Exploring their styles and philosophies in art and their individual journeys, it is evident why their art is so refreshing and vibrant:

Dianna Smith enjoys exploring textures and abstract shapes using mixed media. Lately she has been developing her skills around paper-making techniques and recycled fibres. She gains

support and inspiration from the Arts Collective, exhibiting for the first time with them in last year's Harcourts Challenge. Dianna will be multi-tasking at Art in the Park; she will also be serving doughnuts and coffee from Dandelions Food Truck.

Christina explains that her art explores fluid media. "I'm always in the water in my mind, that is why the fluid mediums appealed to me. I love to see the paint flow across the canvas, a little out of control and morphing into different

shapes. It's like the ocean. There is a certain richness that pouring and layering the deep blue colours creates."

Merel is a mural artist who came from the Netherlands to New Zealand three years ago. In the past, she has created a lot of black and white prints on paper with paint markers or designs on the iPad in procreate, but now has started to experiment with colours on murals and canvasses. Merel's company is Birdy Design, her mural designs are in various places around the town, and so named because 'merel' is a black bird in Dutch.

Musicians will also keep you entertained throughout the day in two chill-out zones; the line-up including Garnham Woodruffe, Julia Smithson, Kevin Prout, Roger Drury, Evan Vaughters, Jim and Denise Carbery, Andy Warneford, Jono Peet, Parko, Pete Aldrich, the poet, and the Surfin' Ukes.

Entry is by koha and parking is in the DOC site opposite; just follow the flags. A shuttle service will operate between the Information Centre and Bushland Park from 11am.

We have booked a fine day but if necessary, there is a weather postponement date on 12 December.

- Lynne Robinson, Arts Collective

MEETING OF THE WHANGAMATA PROSTATE CANCER SUPPORT GROUP

7:00 pm Tuesday 7 December

Cornerstone Centre, Ocean Road, Whangamata

[Next to Challenge beside Anglican Church Op Shop]

If you are living with a prostate cancer diagnosis, are a survivor, or are caring for someone who is we invite you to join us in this meeting of your local Prostate Cancer Support Group. WIVES/PARTNERS ESPECIALLY WELCOME.

Guest Speakers: Two of our own members sharing their Prostate Experiences.

Come and support them and be encouraged.

Visitors most welcome.

For meeting information contact:
Ian Hunt 027 479 1768
or Ross Falconer 021 894 832



For more information or support
0800 477 678 prostate.org.nz

fairview
EXCEPTIONAL WINDOWS & DOORS

FAIRVIEW WHANGAMATA
304 CASEMENT RD,
WHANGAMATA
07 865 8919
WWW.FAIRVIEWWHANGAMATA.NZ

Arts Collective

Art in the Park

CELEBRATION OF THE ARTS

Join the Arts Collective artists & musicians

BYO picnic; food trucks and Leveret wine stand on site

Bushland Park Garden Sunday, 5 December
444 Wentworth Valley Rd 11am – 4pm
Koha entry

Parking in DOC site opposite Bushland Park

Weather postponement date: Sunday, 12 December

Shuttle service between Information Centre and Bushland Park, from 11am

E-Waste Drives coming to Whangamata & Whitianga

Whangamatā Resource Recovery Trust is holding an E-Waste Drive on Saturday 18th and Sunday 19th December 2021.

A temporary drop-off centre will be set up at 101 Lindsay Road. Inwards vehicle access is located opposite the gym on Lindsay Road. Operating from 10am to 2pm on both days, we will be accepting any unused or unwanted electronic waste (anything with a plug or battery-operated).

A donation for smaller items is welcomed. Larger items may incur a small fee. Examples of electronic waste (e-Waste) include TV's, computers, mobile phones, and batteries. We will also be accepting printer cartridges.

All funds raised will go towards the planning and construction of the Whangamata Resource Recovery Centre. Funding is provided for this e-Waste Drive from Thames-Coromandel District Council (TCDC) out of their Waste Minimisation Fund.

They have also kindly donated the use of the premises for the two days.

We would like to thank them for their financial and promotional support.

We would also like to thank Whangamatā Residents and Ratepayers Association, Aspire Refillery & Eco Store and MenzShed Whangamatā for providing promotional support in getting the message out to all of our local businesses, residents and ratepayers.

Our Whitianga Resource Recovery Centre Trust friends have an e-Waste Drive the same weekend at the proposed new Refuse Transfer Station (RTS) site on Moewai Road in Whitianga. Head past the airport towards the bike park, and you will find them on the right-hand side of the road, just past Paradise Pets Whitianga (located on the left).

There will be signage showing you where to enter. If you are heading in their direction, you can take your e-Waste items there instead. Alternatively, we will be holding two more drives in 2022, so make sure you join our Facebook group and keep an eye out for an announcement on when these will be happening.

WHAT: e-Waste Drive
WHEN: 18 & 19 December, 2021, 10am to 2pm
WHERE: 101 Lindsay Road, Whangamatā

Dear Britsers...

It is with a very heavy heart we have to bring you the sad news of our decision to cancel the 2022 Brits at the Beach Festival.

We apologize to all those who will no doubt be as terribly disappointed by this news, as we are, but we hope you understand our reasoning behind making this extremely hard decision.

It is also made in the full knowledge that Covid is here and it will show up some time (very) soon on the Coromandel once Auckland and Waikato fully open up. Whangamatā is only a small beach resort and although our town would be considered well serviced, our solitary medical clinic would not cope with a major outbreak.

After examining the new 'traffic light' policy for events of our size, we've concluded "the uncertainty surrounding running events makes it simply too risky."

We would be continuing to organize an event without knowing what colour light we will have in February, but at the same time knowing that two out of the three colours means cancellation of the event and the associated large losses. The new policy framework also adds costs at the front end with a new administration workload and extra event staffing to comply fully. There may also be the erecting of fencing to control public access again at

a considerable cost. Finally, we feel most uncomfortable asking untrained volunteers to be responsible for checking the general public's health status. The only answer would be to install security (at great cost) to man compliant entry gates.

Over the last 13 years we have been truly blessed at Brits. We've been able to run your event with an incredibly tiny group of volunteers, made possible of course, through your cooperation and the genuine good nature of our festival attendees. Unfortunately, common sense is of little value under this new traffic light system.

We must now ask you to have patience with us as we work through the crediting process. We have 177 orders to arrange refunds for and this will take some time. We have all of your online purchasers and associated email addresses, so all online purchases for the 2022 festival will receive an email from us before the end of this week detailing how credits will be issued.

Again, we are very sorry to be the bearers of this bad news. We hope our early decision allows you to make other arrangements for that weekend.

All the very best.

- Col McCabe, Organizer, Brits at the Beach

WHANGAMATA RESOURCE RECOVERY TRUST

E-WASTE RECYCLING DRIVE



101 LINDSAY ROAD, WHANGAMATA
INWARDS ACCESS IS OPPOSITE THE GYM

- Tv's - Refrigerators - Washing Machines
- Air Conditioners - Computers
- Computer Monitors - Faxes
- Photocopiers - Mobile Phones
- Printers - Printer Cartridges
- Batteries - Anything with a plug/battery operated

*A SMALL DONATION WILL APPLY FOR LARGER ITEMS

Saturday 18 & Sunday 19 December 2021 10am-2pm

PROUDLY SUPPORTED BY:



For further enquiries please phone 027 286 5709



aspire

REFILL & ECO STORE

aspirewhangamata.com

417 Port Road, Whangamata

Bulk Food • Personal Care • Household Cleaning Products
Petcare • Eco-Friendly Household Products and Gift ideas

REUSE and **REFILL** your containers,
DITCH the plastic and help **REDUCE** waste!

Aspire to help reduce waste ... shop Eco-consciously!



Twinkle toes delight



The cutest wee dance show in town, was performed in the first week of November by the students of Whangamatā Dance Studio's 'Twinkle Toes' Class.

The students, aged 3 & 4 years old, proudly danced their way through a range of their favourite dances! Dressed up in their 'glow' leotards, lycra and tutu's they showed off their moves including demi plie's, pointed toes and dancing dinosaurs.

Keeping with the Government's guidelines of a maximum audience of 100 people, dance teacher's Debbie Anderton and Amy Miller were thrilled that the children were able to perform and complete their show!

Many thanks to the wonderful parents and audience who came and supported our students! We are super proud of each one of them!

- Debbie Anderton



FREE ham!



Offer ends Dec 20 2021



The best value for money of the appliances we sell!

with purchase of any **beko** whiteware product over \$799

beko

Live like a Pro

Everyone deserves peace of mind

5 YEAR MANUFACTURERS WARRANTY **MADE IN EUROPE**

*Register your appliance within 90 days of purchase of 5 year warranty. T&C's apply. **Serviced locally.**

Brraaaap! Enduro Sprints a dirty race

Saturday, 27 November, at Parakiwai Quarry Road saw the first and new event to the Whangamatā Dirt Rider Club.

The club ran the event professionally, with transponders, accurate timing and medical assistance on site to make for an awesome day of dirt and tree weaving.

An incredible 81 entries registered on the day with 60 seniors (17 years+) and 20 juniors (smaller 85 cc size bikes) even a small track for the Pee Wees, just so the little ones could have a ride on their bikes.

Winners of the Junior 'Unders' 85cc where Hayden and Caleb, our locals who were the only ones to finish all their races, and Hayden's

Mum, Kelly, told us "Out there it's pretty gnarly and they got battered and bruised, but to see them on their 85's going up the massive hills and down those hills... Awesome".

Her children Hayden and Rylin have been participating and riding motocross before they could even ride a push bike.

Kelly said 'It's real character building too, for them to go out into the bush, battling out in the mud, and Mum and Dad aren't there, they have to do it on their own. To be brave enough, build their confidence and show actual heartiness, being strong and fit for it, it creates a healthy lifestyle. It's friendships too, something in common to have these youngsters

go off and do it together."

Seeing the super fast seniors, Kelly told us there were professional athletes at the event. With at least 6 women racing across the categories.

"Sprints are a time trial, you have your transponder on, you go out at separate times so everyone could have a clear track to see how fast they could do it in. Then the overall points are counted up on each lap to see overall leaders.

"The fastest time at 12 minutes, 38 seconds is real quick!"

Whangamatā News also spoke to Alan Jamieson, also on the committee and he backed that up, professional riders

Ethan Harris, Jason Davis, Chris

Birch all attended on Saturday, and they continue to participate in all the cross country series throughout North and South Island.

Special thanks to the committee-who did the hard yards to get the race ready,

Cameron, Alan, Steve, Brendon, Roy and Kelly making this an inaugural event of success, weaving through the woods, dirt flying and blood flow pumping for riders and spectators alike.

Twilight rides, Thursday night rides and trail rides could well be on the upcoming agenda for the club.

If you want to know more about these events contact Kelly on 021 078 4941.



Results

JUNIOR UNDERS 85CC
 1st Caleb Jameson
 2nd Hayden Tunnicliffe

JUNIOR OVERS 85CC-125CC
 1st Zion Jolly
 2nd Logan Smith
 3rd Oliver Singlilton

WOMEN
 1st Jordyn Watt
 2nd Alivia Singer
 3rd Lisa Flanagan

SENIOR B
 1st Guy Johnson
 2nd Jack Mclean
 3rd Nick Wightman

SENIOR A
 1st Ethan Harris
 2nd Callum Dudson
 3rd Kayne Lamont

VETS 35+
 1st Spencer McClintock
 2nd Shane Firth
 3rd Andrew Gaddes



You can
make a difference!



WE NEED YOUR HELP!

CHRISTMAS FOODBANK APPEAL

As a result of the pandemic we are unable to proceed with our annual foodbank collection. However, we still need your help to support our local foodbank with food and funds this Christmas.

From now and leading up to Christmas, we need the help of our community to provide festive parcels for local families who are facing hardship.

HOW TO DONATE:

Non-perishable goods can be dropped off at:

- Whangamata Real Estate Office – 328 Ocean Road, Whangamata

OR

- Whangamata Community Services Trust – 505 Port Road, Whangamata

OR

- Monetary donations can be made at givealittle.co.nz/cause/whangamata-christmas-foodbank-appeal

**One of our team will happily come and collect any items
from you – phone us on 07 865 8499**

Thank you from the team at Whangamata Real Estate



**Whangamata
Real Estate**

LICENSED REAA 2008

Colour, scent and skill



The final meeting for the Whangamata Garden Club this year saw the usual array of monthly competitions.

The overall winner for the monthly competition with a beautiful gladioli was Irene Tyler.

It was also the month for the Rose Show and the potato competition.

The potato competition saw Gael Elliot winning the highest single-weight, with a potato weighing in at 184 grams.

The total weight was won by

Angela Scott with an overall weight for her entry of 936 grams.

ROSE SHOW RESULTS:

- Miniature**Errin Roigard
- Decorative**Errin Roigard
- Exhibition**Catherine Kidd
- Full Bloom**Dianna Eastwood
- Floribunda**Errin Roigard
- Vase of Roses**...Irene Tyler

Congratulations to Catherine Kidd (pictured) for being awarded Best in Show, with her award-winning Exhibition Rose.

- Photos by Sara Bain




\$4449
inc GST

HOT PRICE

HUSQVARNA TS 138
38" cut, 14.7 hp engine, foot pedal operation



\$5989
inc GST

HUSQVARNA TS 142T
42" cut, V-Twin Husqvarna series engine, pedal operated hydrostatic transmission



\$599
inc GST

Saving \$70 LIMITED STOCK

HUSQVARNA 325iLK,
Battery Multi-Purpose Tool, Trimmer Head Included, Skin Only



From \$685
inc GST

Hot prices on all models

Husqvarna Lawnmowers
Husqvarna Series
Engines, Push and Self Propelled, Mulch & Catch

New stock arriving daily
A small selection of the great Husqvarna Deals at Prescotts Garages



Shaun Prescott, Sales Manager
021 285 4870 / 07 864 7801
1 Hikuai Settlement Road, Hikuai
www.prescottsgarages.co.nz

Pinnacles of success with learning

The Duke of Edinburgh Hillary Award is open to 14 to 24-year-olds. It's an award that creates opportunities for our youth to learn a new skill (or develop an existing one), get physically active, give service to their communities, and take part in an adventure exploring the natural beauty New Zealand has to offer – whilst being self-sufficient for the two to four day exploration.

The award challenges young people to leave their comfort zones and to learn about themselves – which is definitely what it's done at Whangamata Area School.

At the start of 2020, we had four Year 11 girls sign up to do their Bronze Duke of Edinburgh award.

With the adversities of Covid it has

taken longer for them to complete the bronze award than anticipated, but they are now there (or near enough).

They have all completed different parts of the award on their own, across different activities including dance, cheer-leading, snowboarding, piano playing and learning a different language to name just some.

They can be diverse in their activities then come together as a group, completing two great explorations of the Pinnacles and through the Karangahake Gorge, to complete the adventurous section of the award.

It has been a great adventure for them, learning a lot about themselves along the way. They enjoyed it so much that they're



Left to right: Students Amber-Leigh Williamson, Cheyenne Clark-Smith, Bella Muir, Sidney Woodroffe.

going straight to the Gold Award, which also incorporates a residential activity aspect. One student has already signed up for the Spirit of Adventure for their residential experience. They will be doing four day adventurous explorations as a group, their biggest, and hardest, decision being which parts of New Zealand to explore.

This group has been the pioneer at Whangamata Area School, but following in their footsteps, we have 20 Year 10 students who have been able to use some of their activities from Toku Ara, at the beginning of the year, to put towards their Bronze Awards.

Many of these students will complete their award over the summer holidays and will be starting their silver award next year. In 2023, we will have all three levels of the award running for the first time.

Congratulations Vicky Bradshaw – Whangamata Area School teacher, motivator and leader of our youth!

– Jennie Black, Whangamatā News

Bella and Travis: Smart and leading the way

Whangamatā News met with the new Head Girl and Head Boy of Whangamata Area School 2022.

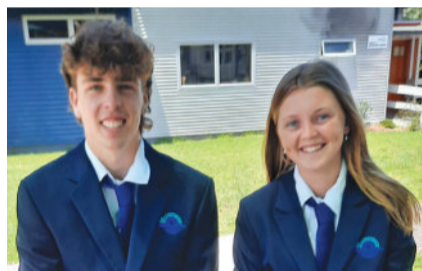
Head Girl Bella Muir and Head Boy Travis Ogg have maturity and perspective beyond their 17 years. I asked both of the Year 12 students how they felt about their recent attainment.

Bella is passionate about everything in our environment.

"Growing up in Tairua, and the daughter of a charter boat business Dad, I have grown up beside the ocean. I scuba dive and I do surf lifesaving as well, so I'm passionate about keeping the sea safe and protecting it for our future".

I asked her: if a student came to you with a problem, how would you handle that scenario?

"I would talk to the student and ask if they were comfortable to tell me what's happening, put my own experience in to play to show



how they can get help". Clearly in my opinion Bella exudes passion, empathy and strength.

Travis is very involved in the Sports Academy at WAS, with 10 students in the group all playing individual sports. Travis is into multi-sports activities of cricket and soccer as well as golf, skating and surfing.

I asked Travis how he would assist a youngster who still wasn't getting over the line with his sport of choice.

"I would tell him that sport doesn't come naturally to everyone, a lot of hard work goes into sport, so when you see the big players and

athletes you don't see the training and hard work that gets put in. The 10,000 hour rule says after all that time you will get good, so put in the work and effort and then eventually it will start to click. Also surround yourself with people who will push you to be great."

Of course, I had to ask the question... how Bella and Travis felt about 12-year-old students, and older, getting vaccinated. If a student said to them 'I can't do it' or 'I don't know much about it', what would you say?

Because their world is a different one to mine, in my late 50's.

Bella answered "I would say get the vax, make an informed decision for yourself. I don't think it is a blanket statement that everyone should get it, I definitely think it's something personal."

Travis said "there are two sides to every story, if there was someone who didn't want to get the

vaccine I'm not going to pressure or enforce it, I going to let them know, like, what's up? If they give me a valid reason, I'd say, how can we work around that and maybe change it."

Both students told me it's quite a touchy subject here, and even with our community here in Whangamatā and Tairua. It's 'real iffy' and 'almost eerie'. "You don't know where anyone stands. It's a scary thing."

"I feel like here in Whangamatā, people feel secluded from it, like it's a little safe town and we don't want to get it, I can see where they are coming from but, probably, eventually it will creep in", Travis said.

I have to say, interviewing these two moved me, all day I realised - they 'speak it the way they see it' and there can not be a better way of understanding our youth.

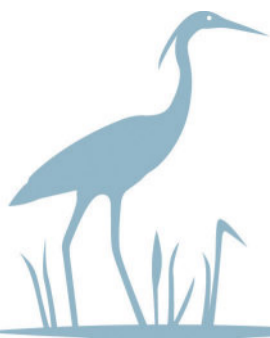
– Jennie Black, Whangamatā News

**YOUR LOCAL
COROMANDEL
BREAKFAST SHOW**
MIKE AND MICHELLE 5.30 -10AM



LISTEN NOW ON
rova

MORE FM
COROMANDEL PENINSULA



Richmond Villas

LIFESTYLE VILLAGE

*Living the lifestyle,
loving the choice...*

A Lifestyle Village in Thames on the Coromandel

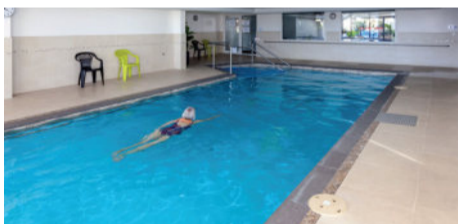
NEW 1 & 2 BEDROOM APARTMENTS AVAILABLE

ENQUIRES FOR STAGE 2 ARE WELCOME!

The 24 new apartments in Stage 1 at Richmond Villas Lifestyle Village are now completed - and all are within walking distance to Thames' shops, cafes and walkways. The perfect location to enjoy your fun-filled retirement.

Our open plan, single level apartments feature covered balconies with fantastic views of the sea, Kauaeranga River and mountains.

Each unit's elegantly finished kitchen, lounge, bedroom and bathroom offer stylish warmth and light. All residents enjoy scenic views from each level's shared lounges, use of the Village Community lodge and participation in all activities and amenities at your leisure.



Phone us to view by appointment
Come and experience the difference!



Waireka Native Tree Reserve Working Bee with Lions

Just across the Moana Anu Anu River causeway is a small 3-acre valley which is fast becoming the town's own Native Tree Reserve. The land was once the site of public water-supply bores ("Waireka" means "sweet water"). Now, astonishingly, after 20 years of planting & track development - and despite a disastrous storm in early 2017 - there are over 570 Kauri trees (saplings mostly bought by the public & many planted by the purchasers) and over 2,200 other native trees (the majority planted by the Whangamata Lions Club & its members and by Opoutere School children and Council staff.)

It's really easy to find: the Reserve can be accessed from below, via a right of way beside 123 Waireka Place or from above, via the right of way to the water tanks next to 105 Te Pamahue Drive, which is up - and to the right of - Tirohanga Drive, in the suburb of Moana Point. We extend an invitation to the public to come and enjoy the peaceful ambiance of the Reserve and to see & learn about our native trees.

How did this project start?

During the year 2000, when the Kauri 2000 Trust celebrated its 20th Anniversary, Lions Clubs around the Coromandel received and answered a call from the 'Kauri 2000' campaign to re-clothe the Coromandel in Kauri trees (*Agathis australis*). The Trust has facilitated the planting of more than 53,000 kauri trees on the Coromandel since its inception. So our Lions Club took up the challenge, with approval from the Whangamata Community Board, to develop Waireka Place (which was basically waste land), as a public Reserve within walking distance of the town, with a picnic area and walking tracks through the native bush, enabling residents & visitors to learn about our native trees and to experience the tranquil atmosphere of the Reserve.



Looking to the Future

Whilst extensive work has continued by members of the Lions Club, with help from the public, over the past 20 years, with planting, construction of tracks, steps, seating and removal of exotic trees and weeds, there are still ambitious plans for further development which will include preparing a plan of the tracks in the Reserve, installing track signage, erecting Native tree identification labels adjacent to selected trees, detailing the tree's common and Maori name, some statistics and the tree's value in days gone by. It is intended to undertake control programmes for invasive plants such as blackberry, ginger, wattle, pampas, banana passionfruit and jasmine, as well as improving the information displayed in the Information Kiosk, such as local Iwi's use of the land, a map of the Reserve to show, in particular, the layout of the tracks and the location of the Kauri trees, including a list of the respective owners. Planting of Native trees is virtually complete apart from a few bare patches of land that still require attention.

Our objective has been to provide a valuable asset for our community and when this essential work has been achieved, our Club will pass the continuing responsibility for the reserve over to Thames-Coromandel District Council.

The working bee led by the Whangamata Lions team recently shows how the work carries on, perhaps unnoticed by us all, but incredibly important in all aspects of future proofing for all of us!

Special people leave lasting footprints on our shores

Many saw the farewell to Whangamatā New World management at the Whangamata Bowling Club on 19 November.

Terry Walker, of the Community Board, gave this very fitting speech...

"Firstly I would like to thank Peter Burgess and the Whangamata Bowling Club for hosting this farewell evening for a Neville, Ricky and staff at Whangamata New World.

Today is a special day for special people.

Neville Singh and his family arrived in Whangamatā in 2015 to take over the Whangamata New World.

Married to Rose, the quiet supportive women in the background, along with family they settled quietly into town.

Neville, not unaccustomed to working 80 plus hours a week, set out to turn the supermarket into a thriving business and succeeded in 2018, 2019, 2020 by becoming one of the top three New World stores in New Zealand.

When Neville had the business ticking along, he looked around town to see who he could support, well he has ended up supporting



Ricky Mataura and Neville Singh.

most if not all community groups at some stage during his time in Whangamatā.

Neville said when he arrived in our town, I may not be able to give you my time but I will support you with goods and product.

Neville is the greatest example of a business volunteer who is prepared to do what it takes to support a community function and make it a success.

He is a person of integrity and substance.

Many businesses and clubs he has supported, including the following, would like to thank Neville and his staff personally:

Whangamata School - Alister Luke
Whanga Police - Will Hamilton

Onemana Fire Bridge - Jo Adams
Bowling Club - Keith Miles.

Some of the other organisations he has supported wanting to say thank you include:

Letters of thanks from
Arts Collective - Graeme Smith
Golf Club - Richard White
Surf Club - Andrea Paynter

Along with the Rugby Club, Soccer Club, Tennis & Squash Club, Surf Lifesaving, Ocean Sports Club, Softball, Cricket, Bowling Club, Fishing, Whangamata & Opoutere School, Fruit for Kids, sport and fundraising events, kids' playcentres, Whangamata Club, RSA, Community Trust, Lions Club, Golf Clubs Titoki and Williamson, local real estate agents, Beach Hop, Bunnings, Carters... and the list goes on. A key one to mention is Gold Card Tuesday - now that's been a great success.

There is bound to be several groups I've missed, and on behalf of them a big thanks for the amazing support and service you

have provided to our community over the last six years.

Neville, what can I say...

You, are the example of what these Community Service Awards stand for.

We wish you and your family all the best in your new adventure and your new PAK'nSAVE, it's a big step up but we are confident you will have it running smoothly in short order.

Please accept this Community Service Award Medal on behalf of our community, CB and TCDC.

We could not let this evening pass without mentioning your 2IC, Ricky Mataura. He has been your rock, working quietly but very efficiently behind the scenes, helping community groups, and keeping the New World flag flying.

Ricky is a valued member of the community and he will be a valuable asset to Neville in his new store, we thank him also for his contribution and wish him well in the future.

Please also accept this Community Service Award on behalf of our community, Community Board and TCDC."

- Terry Walker

Join Us

AT THE

WHANGAMATA CLUB

NEW MEMBERSHIP YEAR - JOIN THE WHANGAMATA CLUB FAMILY TODAY!

With instant membership and an annual fee of \$35 this is the place to be for all age groups. To our existing members: don't forget to renew your membership

WE ARE OPEN FROM 11AM - 7 DAYS A WEEK

(closed Christmas Day)

Lunch available from 12pm daily, with Dinner from 5.30pm.

Dine in our Restaurant Thursday - Sunday from 5.30pm.

Call 07 865 8705 to book your table today.

Head to our website to view our wide selection available.

BATHURST 1000

Coverage from 11am
Sunday 5 December
Watch all the action
Live on the Big Screen

LIKE US ON FACEBOOK

@THEWHANGACLUB

to stay up to date as we move through the Traffic Light System

404 PORT ROAD WWW.WHANGAMATACLUB.CO.NZ P. 07 865 8705

FACEBOOK.COM/THEWHANGACLUB

Table Talk

Fabulous Festive Food FOR CHRISTMAS HAS ARRIVED IN STORE!

Gift baskets for friends, family or staff! Our team are ready to help you to put your order together!

652 Port Rd - in the heart of Whangamata
07 865 7514

WINE TUMBLER WINE COOLER BEER COOLER



Volunteer of the Month

Know them. Appreciate them. Love them.

Every month, *Whangamatā News* celebrates one of our wonderful volunteers. And every month there's a \$20 Chill Café voucher to go with it. Send a nomination to whangamataneews@gmail.com

DECEMBER: Shannon Hughes, Onemana Fire Brigade

At just 20, Shannon is already a legend and one of our most valuable volunteers. From a well-known local Opoutere family, Shannon began as a junior at Onemana Fire Station. Station boss

Jo Adams was impressed right from the start.

"His enthusiasm, commitment and willingness to put his hand up for anything made him an early stand-out. He's come along in leaps and bounds and we're now lining him up for crew boss courses. Unbelievable

for someone of his age."

Well done Shannon - we are very grateful for your service.

Like to help put out fires this summer? Contact Joe Adams 027 449 3034 or just turn up to the Onemana Fire Station every Wednesday at 6.

Book

Living the Dream

BY DEREK MORRISON

When your beach holiday ends, don't you wish you could stay on?

Many people dream of a waterfront home and a laid back lifestyle, of finding another way of working so they can surf, swim, kayak, bike or go fishing every day.

They imagine pulling their kids out of mainstream schools so they can live on a wild beach.

This book tells of the stories of a range of people who made it happen.

From humble baches passed down through generations, to architect designed beach houses, These homes and their occupants show how it can be done.

AVAILABLE FROM WHANGA BOOKS



Fencing disputes

Fencing Disputes are a perennial problem. Often they will ignite because a property owner has not bothered to engage a neighbour but merely presents them with a plan and tells him/her "this is what I am building, like it or lump it."

Not surprisingly this causes some push-back.

The procedure is not that difficult and the law is governed by the Fencing Act 1978. A helpful website for finding this piece of legislation is www.legislation.govt.nz.

The main provision is that neighbours should share equally in the cost of the erection of a boundary fence. The law provides that any occupier who wants to compel a neighbour to contribute to the cost of work on a fence shall serve a notice. This notice has to follow the

form in the schedule to the Act and this is where people get unstuck as they frequently fail to do this.

If you get served with a fencing notice which complies with the Act you still have rights to object and you should within 21 days of service of the notice prepare and serve a cross notice (again following the form in the schedule to the Act).

Fencing Disputes can be quite expensive when lawyers get involved so at the very least endeavour to discuss options. Your neighbour may even have a better proposal than you so be open to creative solutions. If it becomes difficult a mediator can be a good idea as such a person is skilled in helping parties reach their own decisions.

- Neil Evans, Keam Standen Lawyers, neil@keam.co.nz or 021 859 303

Driver Licence Training

I've got my Learner Licence, but how do I...

- Learn the right skills?
- Apply the Give Way rules?
- Know when it's safe to go?

What I need is someone to help me...

- Avoid Mum & Dad's bad habits!
- Learn how & where to position the car on the road correctly
- Know where to look and how to determine when it's safe to go
- What is expected of me to pass my test!

Gavin Buchanan from AA Driving School is in Whangamata each month to help you learn the correct skills required to pass your driving test.

thamesdrivertraining.co.nz
email gavinb@outlook.co.nz • Call or text Gavin 027 268 6381



Book a lesson now

AA Motoring Driving School

Operated locally by: **Thames Driver Training**

FLOORINGXTRA.CO.NZ

FLOORING TO SUIT YOUR STYLE

CARPET • VINYL • TIMBER • LAMINATE • RUGS

Phone or email us! We're measuring & laying! View samples instore!

WHANGAMATA FLOORING XTRA

Whangamata | 636 Port Road | 07 865 8562 | whangamata@flooringxtra.co.nz

CCS ROOFING

LOCALLY OWNED & OPERATED

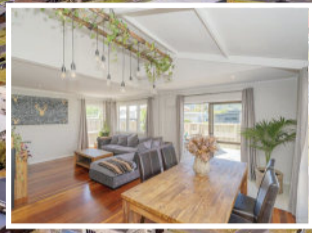
For: New roofing | Re-roofing
Continuous spouting | Metal fascia
Downpipes

CALL US FOR YOUR FREE QUOTE
Geordie Walden: 022 396 4143
ccspouting@gmail.com | www.ccspouting.co.nz



AUCTION

Auction In Our Offices at
501a Port Rd, Whangamata
Sat 1pm, 15th January 2022
(unless sold prior)



Web# FNPC1097



207a Tuck Road
Open Home: Sat & Sun 1pm

New Price



Web# ENPC1084



Onemana

The Ultimate Location

Much loved Tuck Road! 521 sqm site & only 300m to the beach. Cafes & shops just around the corner. Large 4 bedrm home (2 have ensuites), 3 bathrms in total. Open plan living flows to the large outdoor deck. Dble garage.

\$ AUCTION
Robyn Joslin
027 273 5864
robyn@corofirstnat.co.nz



Paradise Found

So many lifestyle options with this charmer. 4 bedrms + office, 2 bathrms & just 200m from the beach. O/plan living extends to the large deck. Relax & take in the restful view. Mezzanine area for more possibilities. Kent style fire for winter.

\$1,195,000
Carol Hatton
027 574 3758
carol@corofirstnat.co.nz



Web# FNPC1058

Whangamata

Yellow lines are Indicative Only



Web# FNPC1088

AUCTION

Onemana

Prime Development

4.92Ha block between The Drive & SH25 & overlooking WGM's famous Titoki Golf Course. This prime piece of land has the ability to be one of WGM's biggest subdivisions allowing multiple section sites & multiple apartments.

\$ By Negotiation
Gordon Turner
021 385 385
gordon@corofirstnat.co.nz



Perfect Holiday Home

An iconic kiwi bach in idyllic Onemana. Open plan living flows to the conservatory & deck where you can relax & enjoy the beach vista. 2 good sized bedrms & recently renovated bathrm & Indry. Add your touch.

\$ AUCTION
Carol Hatton
027 574 3758
carol@corofirstnat.co.nz



Web# 11908151423

Tairua



Web# FNPC1083

AUCTION

Auction On Site
Sat 11am, 18th December 2021
(unless sold prior)

Tairua

122 Pepe Road
Open Home: Sat 1pm

Affordable Investment

The Most Affordable Investment In Tairua. A Polynesian inspired Villa on a Freehold Title in the heart of town. Includes one car park adjacent to Villa. Easy living or ideal holiday escape. 3 main city centres only 2 hrs away.

\$ PBN
Sandie Faiers
027 622 7717
sandie@corofirstnat.co.nz



Award Winning Home

Gold Award Master Builders House of the Year boasting 4 bedrms, 2 lounges, 2 bathrms, powder room & internal access garage. Sit back & enjoy your spectacularly large deck & stunning views to Mt Paku.

\$ AUCTION
Neil Kember
021 0840 5991
neil@corofirstnat.co.nz



Be part of a growing business...

With offices in **Tairua, Whangamata, Whiritoa & Waihi Beach**, we have openings for **cadets & experienced salespeople**. Opportunities in our growing company are available throughout the **Coromandel & coastal areas**. If you'd like to find out more, please email... **deadline@corofirstnat.co.nz** (confidential) or call... **Gordon Turner 021 385 385**





Whangamata Real Estate

LICENSED REAA 2008

07 865 8499

328 Ocean Road, Whangamata

whangamatarealestate.co.nz



126 Avalon Place

- A great little 2 bedroom home with sunroom and a warm timber interior
- Located on a full site in a quiet cul-de-sac just metres from reserve
- Add your own touch to this property by means of a garage, extend the house, upgrade to your own taste
- Great potential here and lots of options

Auction 2pm 12 December at 328 Ocean Rd (will not be sold prior)



Pete Sheppard 027 609 4955
Chris Speedy 021 747 901
Pete.chris@whangamatarealestate.co.nz

View Listing: whanga.co/8020



133 Bruce Wallace Place

- Immaculately presented with four bedrooms, two bathrooms, two lounges, and a lift
- Large modern kitchen
- Woodburner, heat transfer system
- Wrap around decks
- Extra-long tandem garaging, internal access plus additional storage space
- A great location, within easy distance to the harbour, town and beaches
- View by appointment only



Julian West
027 222 4364
julian@whangamatarealestate.co.nz

View Listing: whanga.co/8018



107 Elsinore Close

- This modern four bedroom appealing home includes a sleepout and is presented in a superb condition
- A spacious kitchen, open plan living with direct deck access makes for great summer entertaining
- The bonus of a separate sleepout with tiled shower and separate lounge area creates many options
- Internal entry to double garage
- Landscaped grounds
- View by appointment only



Colin Thompson
021 723 723
colin@whangamatarealestate.co.nz

View Listing: whanga.co/8024



442 Onemana Drive

- Located near the top of Onemana Drive and boasting 180 degree ocean and rural views
- Four double bedrooms, four bathrooms
- The spacious lounge overlooks the ocean with a direct view to Slipper Island and the Aldermans
- A massive deck area sets the tone for serious entertaining/dining or simply lounging in the sun soaking in the vitamin D
- Be prepared to be impressed
- Viewing by appointment only



Julian West
027 222 4364
julian@whangamatarealestate.co.nz

View Listing: whanga.co/8018



Whangamata Real Estate

LICENSED REAA 2008

07 865 8499

328 Ocean Road, Whangamata

whangamatarealestate.co.nz

109 Moana Anu Anu Avenue

- Located on the boundary of a grassy reserve leading to the water's edge
- Three bedrooms, two bathrooms, open plan living and modern kitchen
- Dual deck areas for outdoor entertaining
- Separate double garage/workshop and extra garage/bunkroom
- 897sqm freehold full site
- Fully fenced and gated rear yard
- View via open homes or by appointment

Deadline 4pm 16 December (unless sold prior)



Sharon Laurenson
027 662 3164
sharon@whangamatarealestate.co.nz
View Listing: whanga.co/8022



**DEADLINE SALE:
ENQUIRIES
OVER
\$1,500,000**

200 Tamaki Road

- Four bedrooms and a fantastic location
- Beach and town are very handy, great deck on the north side plus a good-sized conservatory
- The living is open plan, modern kitchen, new flooring & also a heat pump and gas hot water
- The perfect bach, good rental or first home
- Secure now and settle late January 2022 with plenty of summer left to enjoy at the beach



Pete Sheppard 027 609 4955
Chris Speedy 021 747 901
Pete.chris@whangamatarealestate.co.nz
View Listing: whanga.co/8019



**ENQUIRIES
OVER
\$1,175,000**

302B Given Avenue

- An easy stroll to both the surf beach and estuary
- Freehold title of 541sqm (includes the exclusive use driveway)
- Character bach plus separate lined and insulated serviced garage/bunkroom
- Open plan kitchen, dining & living area, sunny conservatory
- Selling furnished, it's ready to go
- Please ask the agent about specific disclosures for this property
- View via open homes or by appointment



Sharon Laurenson
027 662 3164
sharon@whangamatarealestate.co.nz
View Listing: whanga.co/8021



**ENQUIRIES
OVER
\$1,025,000**

100D Waverley Place

- This property will have wide market appeal for its simplicity, size and outdoor entertainment options
- Spacious with open plan living, four bedrooms and two bathrooms means plenty of space for all
- A separate single carport with large lock up shed
- Covered outdoor patio area for entertaining
- Fully fenced and gated rear yard
- View by appointment



Sharon Laurenson
027 662 3164
sharon@whangamatarealestate.co.nz
View Listing: whanga.co/8023



**ENQUIRIES
OVER
\$935,000**

CLASSIFIEDS

PERSONAL

LOOKING FOR COMPANIONSHIP

Are you in your seventies?
Young at heart, enjoy what life has to offer.

This gent would love to meet a lady who enjoys good humour and fun times. Local travel. Wine and dine. Share home cooking.

A casual arrangement would be ideal and who knows where it may end. Be prepared to exchange photo and contact details. As if this appeals the next step would be to arrange a meet and greet. Venue, time and date of your choice.

I live alone, independent, financially secure.
Can even dance if required.

Give it a chance and phone 027 766 2601

PUBLIC NOTICES



LIONS BOOK SALE

Saturday, 4th December
at the Memorial Hall
9am until 2pm

Heaps of books: fiction; non-fiction; cooking; gardening; kids' books.
Come along and browse. CASH ONLY.

PUBLIC NOTICES

GARAGE SALE

105 MOA ST, 4 DECEMBER
moving sale, from 9am-1pm.

Furniture, bedding, clothing, books, bring cash.

WORK WANTED

Decks, fencing, light renovations, home maintenance anything considered.

Phone Paul 021 057 7065.

IN MEMORIAM

BILLY FAGAN, 1941 - 2016.

I have a place within my heart that's for you alone. It's filled with lasting memories of Christmases we have known. Five years.

God I miss you, Billy Boy.

Sports results

GOLF CROQUET

22 November:

John Flinn - 21;
Norma Devlin - 20;
Pat Worth - 20.

TABLE TENNIS

First day back saw only a handful with Keith Gribben and Brendon Ryan taking out top spot. By the second week, word was around and a much better turn

out with Gary Small in the lead just pipping Roger Wolfe. This week, back to normal, with Wayne Broome in top spot with Brian Ford next.

WHANGAMATA TWILIGHT CROQUET

22 November:

Dare Devils 15 v Come Backs 22
Rumblers 20 v Quizzers 16
Cornerstone 17 v Bits & Pieces 18
Bridge Buddies v Probus 20

Whangamatā Tides 2021

November 2021

☾ New Moon: 5th ☀ Full Moon: 19th

Date	High tide AM	Height (m)	High tide PM	Low tide AM	Height (m)	Low tide PM	Sun rise	Sun set
19 Fri	7:58	1.7	20:08	1:37	0.3	13:59	05:53	20:09
20 Sat	8:40	1.8	20:49	2:19	0.3	14:41	05:52	20:10
21 Sun	9:19	1.8	21:29	2:58	0.3	15:22	05:52	20:11
22 Mon	9:58	1.8	22:07	3:36	0.3	16:01	05:51	20:12
23 Tue	10:36	1.8	22:46	4:13	0.3	16:41	05:51	20:13
24 Wed	11:15	1.7	23:26	4:50	0.3	17:21	05:50	20:14
25 Thu		1.7	11:55	5:29	0.4	18:02	05:50	20:15
26 Fri	0:07	1.6	12:37	6:10	0.4	18:46	05:49	20:16
27 Sat	0:51	1.6	13:22	6:55	0.4	19:34	05:49	20:17
28 Sun	1:40	1.6	14:11	7:44	0.4	20:24	05:49	20:18
29 Mon	2:34	1.6	15:03	8:38	0.4	21:18	05:48	20:19
30 Tue	3:33	1.6	15:58	9:36	0.4	22:15	05:48	20:20

December 2021

☾ New Moon: 4th ☀ Full Moon: 19th

Date	High tide AM	Height (m)	High tide PM	Low tide AM	Height (m)	Low tide PM	Sun rise	Sun set
1 Wed	4:34	1.7	16:54	10:36	0.4	23:12	05:48	20:21
2 Thu	5:35	1.7	17:50	11:35	0.4		05:47	20:22
3 Fri	6:34	1.8	18:47	0:09	0.2	12:33	05:47	20:23
4 Sat	7:30	1.9	19:43	1:04	0.1	13:30	05:47	20:24
5 Sun	8:25	2.0	20:38	1:58	0.1	14:26	05:47	20:25
6 Mon	9:18	2.0	21:33	2:51	0.0	15:21	05:47	20:26
7 Tue	10:11	2.0	22:28	3:43	0.0	16:16	05:47	20:27
8 Wed	11:05	2.0	23:22	4:35	0.0	17:10	05:47	20:27
9 Thu		1.9	11:58	5:26	0.1	18:05	05:47	20:28
10 Fri	0:16	1.8	12:52	6:19	0.2	18:59	05:47	20:29
11 Sat	1:12	1.8	13:46	7:14	0.3	19:55	05:47	20:30
12 Sun	2:09	1.7	14:41	8:10	0.4	20:50	05:47	20:31
13 Mon	3:07	1.7	15:34	9:08	0.4	21:46	05:47	20:31
14 Tue	4:05	1.6	16:27	10:06	0.5	22:40	05:47	20:32
15 Wed	5:02	1.6	17:17	11:03	0.5	23:32	05:48	20:33
16 Thu	5:55	1.6	18:06		0.4	11:56	05:48	20:33
17 Fri	6:44	1.7	18:53	0:21	0.4	12:45	05:48	20:34

SITUATIONS VACANT

URGENTLY REQUIRED

Part-time caregiver

Part-time caregiver needed in Whangamata to assist with personal care for lovely lady in her 70's.

Good hourly rate offered, training provided.

Phone Margaret on 865 6596.



Only the BEST TRADIES will do!

Use Locals... For Locals... Support Locals!

BUILDER



MAINTENANCE ON PROPERTIES

- Decks & retaining walls
- Fences & handyman work

No mess, no stress

PHONE REX: 021 997 428

AGED CARE

Beside the Seaside

WHANGAMATA

Since 2014
Beside the Seaside
Aged care

Diana 07 865 9385
www.besidetheseaside.co.nz



EARTHWORKS



- Bobcat & excavator
- Tight access work
- Site works
- Topsoiling
- Driveways
- Hole drilling
- Concrete prep
- Cartage

Shay 021 742 966 | www.blackhillearthworks.co.nz
info@blackhillearthworks.co.nz

EARTHWORKS

BOBCATS & DIGGERS WHANGAMATA

Phone Dylan
027 837 0850



Phone Earl
027 650 6620

- Bobcat & digger hire
- Truck & hiab hire
- Building site & driveway excavations
- Building demolition
- Metal & soil supplies
- Landscaping
- Drilling

IT SUPPORT



Boot it.

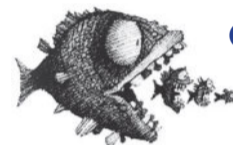
FIBRE INTERNET
now available to
order from **Boot I.T.**

We are the Coromandel's
only local Fibre Internet
Provider, and the **ONLY**
provider that offers 7 days
per week support.

Call us on 0800 242 266
to find out more.

HIRE / SUPPLIES

Bubba's



Outdoors & Hire

321 Casement Rd,
Whangamata

OPEN 7 DAYS

- LPG Refills
- Ice
- Bait
- Rods
- Reels
- Tackle
- Chandlery
- General Hire

P. 07 865 7464

KITCHEN



ROD ROUTLEY

P. 07 865 8988
M. 027 285 6959
E. brnkitchens@gmail.com

SHOWROOM:

313 Casement Rd, Whangamata

LANDSCAPING

Beach Contractors
& Landscape Supplies

LANDSCAPING SUPPLIES:

Bark, mulch, compost and topsoil	Sand, lime chip, river stones and pebbles	Cement, builder's mix and a range of metals
----------------------------------	---	---

Delivery service available

Whangamata Yard
2546 Waihi Whangamata Rd
M. 027 261 1262

Waihi Beach Yard
691 Waihi Beach Rd
P. 07 863 5340

CONCRETE

**BROWNMORE
CONSTRUCTION**

CONCRETE CONTRACTORS

Any Concrete Requirements: Slabs, driveways, patios, paths, etc

All types of concrete - colour - finish

Council Permits for Vehicle Crossings

Excavation to finished product • Saw cutting & drilling

We take pride in doing a quality job at a competitive rate

REX: 027 285 5489

P. 07 863 3364 • office@brownmoreconstruction.co.nz

www.brownmoreconstruction.co.nz

PLUMBING

Russell CHOAT
GAS & Plumbing

Whangamata

**FOR ALL YOUR GAS-FITTING, PLUMBING,
DRAINAGE & ROOFING REQUIREMENTS**

Registered craftsman & member
of Master Plumbers

M. 0274 714 869 E. CHOATS@XTRA.CO.NZ

LAWNS

**Coastal
lawns & landscapes**
PROFESSIONAL • QUALIFIED • RELIABLE

- FULLY INSURED
- FRUIT TREE CARE
- LAWN MOWING
- IRRIGATION
- TREE PRUNING
- LANDSCAPE MAINTENANCE

GREG FOSTER 021 0278 6990
E. info@coastallawns.co.nz

PAINTER

**Coastline
Property Painters**

Protecting your investment
■ Interior ■ Exterior ■ Roofs

Communication is everything
■ Updates & photos as your job progresses

Call Richard Upton: 0274 884 881 / www.coastlinepropertypainters.com

CLOTHING

Marty's
**Clothing Alterations
and Repairs**

LADIES - MEN - CHILDRENSWEAR

Open Tuesday to Friday 8am to 1pm
105 Aickin Road (just off Port Road),
Whangamata | M. 027 253 5515

CURTAINS / BLINDS



croft design

Specialising in:

- Curtains
- Roman Blinds
- Cushions
- Duvet Covers
- Roller Blinds
- Shutters

306 CASEMENT ROAD, WHANGAMATA
M. 0274 481 957 | E. bethlord12@gmail.com

EARTHWORKS

D.M. EARTHWORKS LTD

- Driveways
- Retaining walls
- Augering
- Concrete prep
- Floor pads
- General digger & truck work
- 3.5 ton digger
- 6 ton tipper truck

Damian Martin: 027 353 2599
damomartin863@outlook.com

Use Only the Best Services in our Community!

Use Locals... For Locals... Support Locals!

PAINTERS

Gerards Painting Services

Small jobs are my speciality!

PHONE: 021 108 5996



LAWN & GARDEN CARE

Harry's Lawn & Garden Care

Whangamata



Quality, honesty and reliability

Mobile 021 623 375 harrysgreenthumb@gmail.com

BUILDER

HBL HANSEN BUILDERZ

BUILDING & LANDSCAPING

COMMITTED TO EXCELLENCE

Contact us to Discuss your project & a free estimate today



ADRIAN 0274 263 895 | hansen.builderz@gmail.com | HBLHomesnz.co.nz
Residential | Commercial | Alterations | Additions

LOCKSMITH

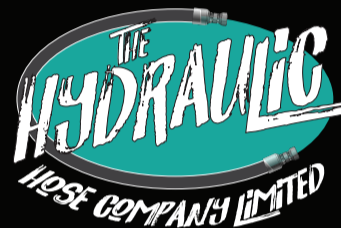
Homesafe Locksmiths & Services

ONE key to fit ALL doors!
FREE advice on your lock requirements

Ian McAuley (Macca) Owner/Operator
• 126A Tamaki Rd, Whangamata

• P 021 719 495 or 07 865 7092 • E imacca2003@yahoo.co.nz

HYDRAULIC HOSES



Mobile Hydraulic Hose Service, Whangamata
Matt: 0274 123 996 Owner/operator

email: hyd hosecompany@gmail.com

CLEANING



we'll take care of it *

- Carpet Cleaning
- Pest Control
- Flood & Fire Restoration
- Stain Removal
- Upholstery Cleaning



07 863 8358 or 0800 225 552

whangamata@jae.co.nz



INDIAN CUISINE



LUNCH SPECIAL
\$11.99 takeaway
or \$13.99 dine-in

Dine-in, takeaway or delivery. Barista coffee available all times.
Seating up to 70 people. Come & experience the new decor.

Order online: kafalindiancuisine.co.nz or menulog.co.nz
- all menus are available on website

Dinner open 7 days, 4pm-late • Lunch Fri to Sun, 11.30am-2pm
800 PORT ROAD | PHONE 07 865 8870

PET SITTING

Helen McFurr

Pet Nanny

Whangamata - Onemana
Pet care at home when you are going away - casual day or overnight stays, daily visits



Ph 027 286 5709 to discuss your pet's needs

BUILDER

Keith the Builder LBP

Need something done?

For maintenance, decking, fencing, repairs, interior work and all enquiries

PHONE FOR FREE QUOTE
Keith phone 0272 262 039



ELECTRICAL



"Totally Dependable"

AVAILABLE 24/7

Residential | Commercial | Heat Pumps
Fire Systems

P. 865 9309 | whangamata@laserelectrical.co.nz
Visit our Aickin Road Showroom today!

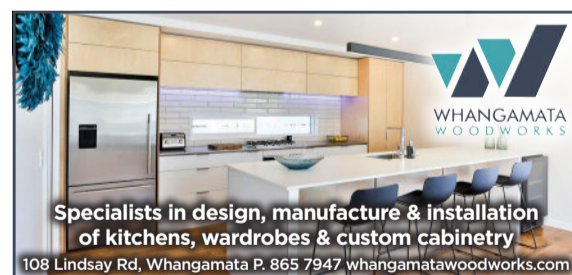
PLUMBING



- ✓ Plumbing ✓ Gas fitting
- ✓ Drainage ✓ General maintenance

Phone 865 7151 | Whangamata
whangamata@laserplumbing.co.nz

KITCHENS



Specialists in design, manufacture & installation of kitchens, wardrobes & custom cabinetry

108 Lindsay Rd, Whangamata P. 865 7947 whangamatawoodworks.com

MASTERCRAFT KITCHENS

BUILDERS

MJC BUILDERS

Building with pride

- FENCING
- DECKS
- PERGOLAS
- ROOFING
- ALTERATIONS
- BUILDING REPAIRS
- CONCRETE DRIVEWAYS
- FULL LANDSCAPING



MIKE CUNNINGHAM M. 021 0677 555
E. mjc.builder.whangamata@gmail.com

TREE SPECIALIST



QUALIFIED ARBORIST

30 years experience in all aspects of tree work

- Pruning
- Felling
- Storm damage
- Hedge trimming
- Confined space dismantling
- Debris chipped
- Free quotes and more

Professional and reliable service - fully insured

Phone Greg Nicholson on 07 865 6769 or 021 133 0937
email: nicholsontreeservices@hotmail.com

SCAFFOLDING

For all your scaffolding needs



- New houses, renovations
- Edge protection house painting
- Be safe get it done

Phone David 021 155 7469

Only the BEST TRADIES will do! Use Locals... For Locals... Support Locals!

BUILDER

LOOKING FOR EXPERT CRAFTSMANSHIP FOR YOUR NEXT BUILDING PROJECT?

Over 40 years of building expertise

- ✓ DESIGN & BUILD
- ✓ PROJECT MANAGEMENT
- ✓ ESTIMATING
- ✓ RENOVATION & REPAIRS
- ✓ CONSULTING
- ✓ COUNCIL LIAISON
- ✓ ADVICE



CONTACT US TODAY: 027 526 4414

hello@onemanabuilders.co.nz | www.onemanabuilders.co.nz

ONEMANA BUILDING CO

ELECTRICIAN

PITCHER ELECTRICAL



SERVICING WHANGAMATA FOR OVER 50 YEARS!
THREE GENERATIONS
NO JOB TOO BIG OR TOO SMALL

Electrical Installations and Service Repairs for all your Home Appliances
Authorised F&P Service Centre

P. 865 8848 | M. 0274 589 571

POOL & SPA SERVICES

Pool Queen LTD
MOBILE POOL & SPA CLEANING SERVICES
Sharleena Tucker ~ poolqueen@outlook.co.nz
027 316 3384
Coromandel Peninsula

WINDOWS

Ecofriendly window & house washing, shower glass restoration PLUS
Roof spraying & waterblasting

FAMILY BUSINESS

Nathan Midwinter M. 021 501 324
WHANGAMATA W. www.purenclean.co.nz

HEAT PUMPS

Reef REFRIGERATION & AIR CONDITIONING LTD

We Sell and Service all Major Brands
Your heat pump specialist
On site marine & commercial refrigeration
Call today for a hassle-free quote
027 933 8599
www.reefrigeration.co.nz

VEHICLE REMOVAL

WANTED **VEHICLES: DEAD, ALIVE, DAMAGED,**
de-registered, mechanical problems, no WOF - we buy it all.

We pay cash for any cars, vans, utes, 4x4, trucks

FREE Pickup

Freephone now on 0800 333 398
Or text 021 344 449 www.vehicleremovals.co.nz

BINS

Skip Bins, Wheelie Bins, Front Load Bins

Contact us today! **We can help!**

0800 4 MY BIN - www.smartbins.co.nz
Proudly 100% Kiwi owned

BOARDING KENNEL / CATTERY

SPOT X
BOARDING KENNELS AND CATTERY

Quality care and facilities in a rural setting
Office hours: 9am-12 noon and 3-5pm daily
INSPECTION WELCOME
Ph 07 865 8242 or 027 624 3890 - Annette Gillatt
4km south of Whangamata on the main road
Christmas booking essential

PERSONAL

Stay Dry PRODUCTS

Manufacturer of **Environment Friendly Washable Products**

- Incontinence underwear
- Mattress protectors
- Comfy's
- Meal-time protectors
- Aprons
- Nightwear & special needs products
- Limb protectors

318 Casement Rd, Whangamata | P. 07 865 9647
www.staydry.co.nz | products@staydry.co.nz

TREE SPECIALIST

- Tree felling & pruning
- Hedge trimming
- Stump grinding
- Fully insured
- Qualified arborist

TREECARE WHANGAMATA LTD
Contact Ben 021 827 355
treecarewhangamata@gmail.com

HEAT PUMPS

TRUSTED LOCAL EXPERTS
WHANGA COOL

HEAT PUMPS
VENTILATION
AIR CONDITIONING
REFRIGERATION

07 865 9061
IQP CERTIFIED

SCAFFOLDING

- Mobile scaffolding
- Roof edge protection
- Construction scaffold

Servicing Whangamata and surrounding areas

Please ring **022 076 0160** or email whangamatascaffolding@gmail.com
102 Lindsay Road, Whangamata Est 2014

TYRE & BATTERY SERVICES

WHANGAMATA TYRE & BATTERY

KUMHO TYRES 7

Car tyres / Wheel alignment
4WD tyres / Tyre repair
Wheel balance
Small implement tyres
Batteries - car & marine

Phone Simon 865 7698

CHALLENGE Cnr Port & Ocean Rd, Whangamata
www.challenge.net.nz

UPHOLSTERY

WINDWOVEN UPHOLSTERY

For all your upholstery needs
• Home • Office • Boat • Caravan
Available 6 days for your convenience
Free quotes • Free pick up and delivery

07 865 8774
021 066 5788

Whangamata

'FLASH'

BREWERS CONVENTION

A brewers convention was held at Ian Laybourne's place in Ocean Road, recently

Nine competitors entered their beers for the Convention Cup which was presented by S. Beniston.

The winner was Mr and Mrs O. Treen. The judge was Mr Chook Thompson. A good time was had by all and another tasting will be held soon.

Restaurant Captain's Table

Port Road Whangamata

Bookings Ph. 292

B.Y.O.

DINNER 6 p.m. til late

SURFERS BREAKFAST

Labour Weekend Sat, Sun. and Mon 7.30 am. \$3.50

Thank you

On behalf of the parents, relatives and friends of the four people lost at sea please accept our heartfelt thanks for your magnificent efforts to locate them.

In particular the local co-ordinators of the Sea/Air Rescue team and the Police department. The individual efforts of the launch owners and their helpers who spared no time and effort in their endeavours can only be described as magnificent.

Pat Cameron

'Birthday of a Queen'

In all the world, humanity is One, Though widely differing in all that can be shared. Reject it, and our Race may not be spared! This is the greatest thing beneath the sun:

Alas! we see throughout the world today Insistent emphasis on drive to arms — As though Security permits no other way But that of frightfulness and monstrous harms!

From ancient times we've strained this way to 'live', This way of wolfishness, of herding into packs — Intent on what we 'get', whate'er we choose to 'give', Hold tense resistance, poised for sneak attacks!

Thus highly ego-centred, we've built the State And then the Empire, tensions in between, Commonwealth reclaiming, still with hate, — But honour well the birthday of a Queen!

Raymond E. Hansen Whangamata
26th May, 1981

WHANGAMATA WINE CENTRE

Max and Faith McKillop

Phone 757

SPECIAL — Muller Thurgau

Usually \$3.85

\$2.95

GEORGE BARTON FOODMARKET LTD.

Dear Customer,

We are pleased to announce that our Store is now a member of the New Four Square "Discount Group". Our new pricing policy means bigger savings every day for you.

However in order that our customers may continue to enjoy these most favourable discount prices we have decided to discontinue our Credit facilities.

Therefore as from the 1st January, 1980 we will be stopping all credit and from that date we will be dealing on a cash/cheque basis only.

We trust we will have the understanding and continued good will of you, our Valued Customer.

The Flash memories...

Whangamata News thought our readers would thoroughly enjoy excerpts from the Whangamata 'Flash' - we are fortunate to have hard copies from 1979 and 1980.

Read the clippings on alcohol prices, vehicle sales, property pricing and even bloopers in classified adverts - there are even three digit phone numbers!

If you also have old newspaper cuttings from this era or earlier, I would love to photograph them to keep this series of memorabilia publishing for a while.

VEHICLES FOR SALE

Thames Freighter, flatdeck. \$700 o.n.o. Phone 58-282.

Avenger Alpine 1973, mechanically sound. Very tidy cond \$2850 ono. Collectors item, 1956 Studebaker station wagon, plenty of spares. \$400 ono. Ph 58-072.

1969 Leyland van, complete with workbench (bed), as is where is, \$350. Offers over \$1500 also accepted. Ph 829 Whanga. or contact Peter Thompson.

MOVIES

Ron Slater Theatres
Whangamata

Sat. 17th Nov., 1979

8.15 p.m. HEAVEN CAN WAIT (GY)
Hot Comedy.

Sun. 8th Nov., 1979

8.15 p.m. ROCKY II (GA) The story continues.

Sat. 24th Nov (1979

8.15 p.m. GO TELL THE SPARTANS (R16) War action.

Sun. 25th Nov., 1979

8.15 p.m. BUTCH & SUNDANCE, THE EARLY DAYS (GY)

HERALDING SUMMER

A flight of approx. 150 Godwits was seen along the harbour beach last week. These migratory birds fly from Siberia, and are a sure sign that summer is coming.

ST. JOHN AMBULANCE ASSOC.

At a recent meeting of drivers and attendants it was decided to give a new method of rostering a trial until the end of the year. Volunteers have been split into teams of 6, 3 drivers and 3 attendants to form their own roster over a period of three weeks. Each team is then off for 6 weeks when two other teams are on duty. When the team members meet to arrange their roster a training will take place. It is hoped with this new system to increase a volunteer's chances of practical experience on the ambulance.

As usual, anyone wishing to volunteer for ambulance duty will be warmly welcomed.

PETROL SHORTAGE CAUSES CONCERN

Petrol restrictions over the Christmas and New Year period will still cause problems for petrol resellers and motorists on the Coromandel Peninsula. Resellers see the problem of handling the demand during restricted hours over this period when their facilities are normally stretched to their limit as a real problem. The number of pumps a reseller has is controlled by the average sales over a year not by the peak gallonage he sells. It is envisaged that long queues will form at times especially on Christmas Eve and New Years Eve.

Motorists will not have petrol available from the Saturday noon prior to both these days until 6 a.m. and then pumps will close at 9 p.m. on these two Monday nights and remain closed until 6 a.m. on the Wednesday mornings. Local resellers who normally over this period operate extended hours to cope with the seasonal influx will have their hours cut between 22nd December and 6th January by approximately 41%. At this time of the year their pumps are working above the capacity that they are designed for and the reduction in hours will place even further pressure on equipment and forecourt staff. Local customers are advised to fill up early in the mornings or in the evenings to avoid the expected queues. The carless days

scheme has been totally lifted over the holiday period but comes back into operation on January 21st.

Over Anniversary Weekend the petrol restraints mean that there will be no petrol sales from noon on the Saturday until Monday 6 a.m. This weekend is usually the busiest of the year for local garages as most families with school-children return home on the Monday to prepare for the return to school. Most petrol resellers on the Coromandel Peninsula have

GALA FINALS

The Gala Day Committee have had a final meeting and report the total takings of the Gala was \$5630.00. The Sports Complex will benefit by \$2750.

This is by far the largest amount ever raised. The fine sunny afternoon was certainly an important factor to keep the crowds lingering, and the decision to start the parade and Gala later than other years may have also helped.

The Gala Committee who worked so hard were Mesdames Margaret Martin, T. Martin, P. Murphy and Messrs Dave Leov, Peter Waters and Mel Hollands.

Thanks were extended to everyone concerned who made the 1979 Gala such a great success.

T.A.B. OPENS

The Totalisator Agency Board's new premises in Winifred Avenue, Whangamata, opens for business on Friday 24th October 1980

This has come about through an increasing demand for a T.A.B. in Whangamata by many holiday makers and local residents. Many locals will be employed on a full and part time basis to keep the agency operating on every race day of the year.

The T.A.B. looks forward to a long and happy association with the growing township of Whangamata.

MOANA POINT

We have sections for sale from \$9,500
10% deposit * 10 years to repay * 9 1/2% interest
That's only \$25 per week and we provide water, sewage, underground power and telephone, topsoil and grass.

Interested? Call at REID REAL ESTATE, Port Road, Whangamata. — Tel 58-214 — After Hours 58-926 or 58-760

