

PARADISE COAST

Whangamatā

ISSUE 127 - 11 OCTOBER, 2024

NEWS



The stride of 1718 entrants

PAGE 11

FREE COPY
PLEASE TAKE ONE!

Photos by Mark James



BY LOCALS, FOR LOCALS, ABOUT LOCALS.

WE WELCOME YOUR CONTRIBUTIONS!

EMAIL WHANGAMATANNEWS@GMAIL.COM • FACEBOOK [@WHANGANNEWS](https://www.facebook.com/WHANGANNEWS)

Taken home by bach owners and visitors to everywhere

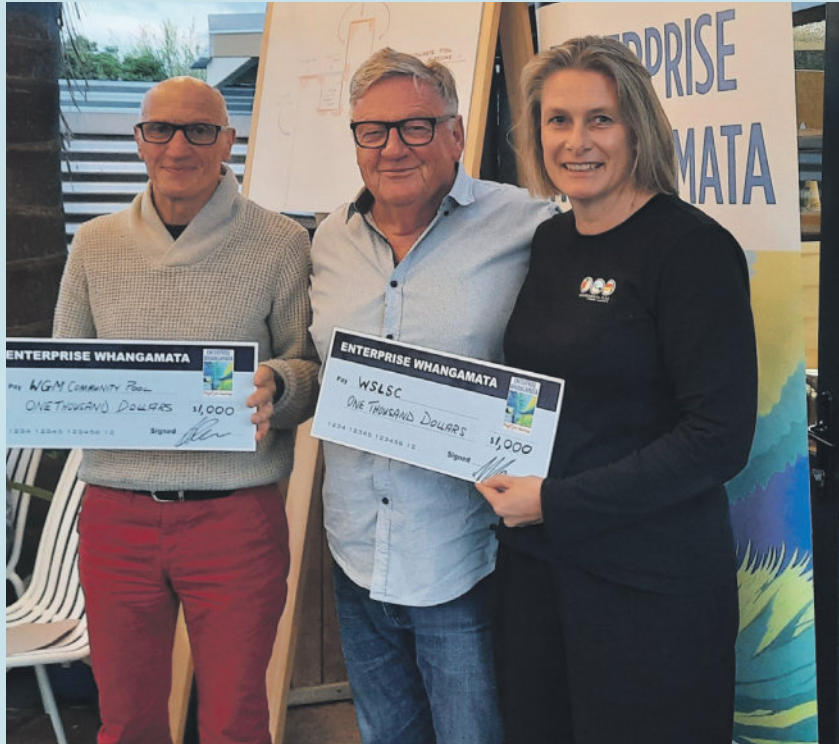
SEE ALL OUR EDITIONS LIVE AT WWW.WHANGAMATANNEWS.NZ

EDITORIAL & MEDIA SALES:

JENNIE BLACK - 021 0232 1661

DELIVERED TO WAIHI, WHIRITOA, WHANGAMATĀ, ONEMANA, HIKUAI, PAUANUI & TAIRUA

Enterprise Whangamata gives generously



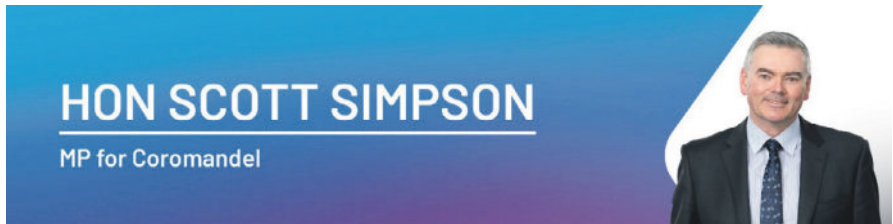
On Thursday, 26 September, Enterprise Whangamata (EW) held their monthly Business After 5 (BA5) at the Whanga Bar attended by some 40 local businesses and guests.

The Whangamata Community Pool and the Whangamata Surf Life Saving Club are currently undergoing major capital refurbishment. EW invited representatives from both organisations to give an update

on work and their progress. Both organisations have experienced unexpected cost increases so are actively seeking further local support.

On behalf of the EW Board, Chairman Patrick Kerr was delighted to present a cheque for \$1,000 towards each project to Rob Boston from Whangamata Community Pool and Dianna Harrison Manager of WSLSC.

- Jennie Black



FamilyBoost payments available

For many families with pre-school children, the cost of early childhood education can be a big challenge to household budgets. That's why the Government announced some time ago that there would be extra financial support by way of the FamilyBoost programme.

Registrations for FamilyBoost payments are now open. I encourage local parents to apply through Inland Revenue's myIR platform. Those who are eligible can apply to be reimbursed for the early childhood care fees they have paid between 1 July and 30 September of up to 25% of the weekly fee costs, up to \$75 per week or \$975 every three months.

While everyone has been affected by the cost of living in recent years, the combined impact of higher food prices and interest rates have hit

young families particularly hard. For many families this reimbursement will make a real difference and I think it will be really worth people applying to receive it.

Across the country the programme is expected to support over 100,000 families and 140,000 children. To be eligible, you must care for a child aged 5 or under, have a household income under \$180,000 a year, be paying early childhood education to a licensed provider, and be a New Zealand tax resident.

This policy is part of our commitment to ease the cost of living and make it easier for parents to manage household expenses while ensuring their children get quality early education.

- Authorised by Scott Simpson MP, 614 Pollen St, Thames

Welcome to the first October 2024 edition of Whangamatā News

- a magazine By Locals, For Locals, About Locals

Whangamatā News		www.WhangamataNews.nz	
EDITOR & SALES DIRECTOR Jennie Black Phone 021 0232 1661 WhangamataNews@gmail.com	PUBLISHING Printed by Beacon Media Group. Published by Whangamatā News 2021 Ltd	All content featured in Whangamatā NEWS Limited is subject to copyright in its entirety and may not be reproduced in any form without permission from the Publisher. Any material supplied for publication is at the submitter's risk. All information is believed to be true by the Publisher at the time of printing. Views expressed in Whangamatā NEWS Limited are not necessarily those of the Publisher.	
SPORTS REPORTER & PHOTOGRAPHER Mark James Phone 021 668 469			
ART DIRECTOR Anna Gledhill WhangamataNewsArt@gmail.com			

Scott Simpson MP for Coromandel

Contact me anytime
0800 550 330 • scottsimpson.co.nz
mpcoromandel@parliament.govt.nz
[f scottsimpsonmp](#)

Authorised by Scott Simpson, Parliament Buildings, Wellington.

For advertising queries contact Jennie Black
Editorial/Sales Director
Phone 021 0232 1661
jennieablack@gmail.com

We welcome your letters, articles, photos, news tips and advertising enquiries

- We ask that letters and articles be no more than 250 words, although exceptions can be made.
- Photos should be high resolution and in focus.
- Include your name, no noms de plumes.

For editorial or photographic matters, phone Jennie on 021 0232 1661 or email WhangamataNews@gmail.com

SHOW & SHINE DISPLAY

Free Admission

Saturday 2nd November 9.15am to 12pm

Whangamata Club Carpark
404 Port Road

Proudly sponsored by Ocean Ford Whakatane

Local Golf Tournament Scores Unique Golf Prize

Even if you don't play golf, chances are you have heard of the amazing new golf complex north of Auckland. Te Arai Links, Mangawhai Heads is a world top 10 golf course and the chance to play there is many golfers dream.

The Bayleys Paradise Coast Golf Classic has secured two tees times which includes luxury accomodation and breakfast. Valued at \$4,500 it is the Paradise Coast Golf Classic's major prize.

Patrick Kerr, Chair of Enterprise Whangamata, the creators and organisers of the event, believe this is one of the best prizes in golf. "While it's a substantial part of our prize pool, we believe it will be a huge incentive for people to enter the PCGC", said Patrick.

"To that end, rather than reward the best gross or highest stableford we want to give everyone who enters the chance to win, so there'll

be a draw on the Sunday at Whangamatā".

Bayleys Paradise Coast Golf Classic is played over three local courses on The Coromandel - Pauanui Lakes Resort, Tairua Golf and Country Club and the final at the Whangamata Golf Club.

All courses are within a short drive from each other and offer a diverse range of challenges. There's the long Lakes Resort course, the tight and tidy Tairua with its legendary ladies morning tea and of course the highly regarded Whangamatā course with its infamous water holes.

Bayleys Paradise Coast Golf Classic, \$10,000 in prizes including Te Arai Links. The tournament is restricted to just 140 players. Handicap Max men 27, women 40. Gross, net, stableford and twos.

The Bayleys Paradise Coast Golf Classic runs from 29 November until 1 December.

To enter, visit paradisecoastgolfclassic.co.nz
For inquiries, contact Patrick Kerr 021 56 00 18 or Shaun Fay, Marketing and PR, 027 931 7157.

Playground looking ideal



Whangamatā News has been monitoring the playground (to the right hand side, behind the Fire Station).

After our first story, a wise owl cordoned it off and saw the emergency of safety as the school holidays approached. Broken seating, sharp steel, matting in a mess, swings in operable and decking a shocker.

The playground was listed in the 2021-2031 Long Term Plan as due for renewal in the 2022/23 financial year, with a budget of \$156,000. This was deferred in the 2023/24 Annual Plan process due to the huge amount of budget and staff that needed to be diverted to cyclone recovery work.

The playground project wasn't included in the 2024-2034 Long

Term Plan because an inspection last year determined that the playground could, with minor work, continue to be usable for the short term, with frequent monitoring to ensure its safety.

I'm delighted to say, action (for the interim) has happened and a Thames contractor has leapt into action with new timber on all the platforms, removed the swings and table and at a small cost of \$2000 - \$4000 gave it a face lift...for now.

Understandably, to source an exact replica of old playground equipment that is missing is unlikely, however I'm sure 4 swings could be sourced and safe non- trip matting ?

- Jennie Black, new grandmother!

PARADISE COAST

GOLF Classic

Three of the Coromandel's top golf courses –

- THE LAKES RESORT – PĀUANUI
- TAIRUA GOLF & COUNTRY CLUB • TITOKI – WHANGAMATĀ

again join together for our golf tournament. The Paradise Coast Golf Classic is designed to bring you back to the coast you love, playing the game you adore.

FRIDAY 29 NOV

SATURDAY 30 NOV

SUNDAY 1 DEC

WHAT HAPPENS?

29 Nov – 70 play The Lakes Resort Pāuanui and 70 play Tairua

30 Nov – These 70 players swap

1 Dec – Finals Day at Whangamatā

\$10,000+

worth of

PRIZES

GROSS, NET AND STABLEFORD – TWOS

Max Men 27, Max Women 40

PRIZES

Over \$10,000 worth of prizes

Fri–Sat daily prizes, Sun finals

THANKS TO: Enterprise Whangamatā, TCDC, NZ Golf

\$200 till 30 September Numbers limited to 140 people

To enter go to www.golfgenius.com/ggid/mak68w

Challenge Whangamata

Whangamata's Real Service Station

FREE DUNLOP VEST

with the purchase of a set of 4 Sport Maxx or Direzza DZ102+ tyres*

valued at **\$150**

STICK WITH DUNLOP

Offer ends 31 October 2024

T&Cs apply

PHONE SIMON 07 865 7698

WHANGAMATA TYRE & BATTERY

Car tyres / Wheel alignment
4WD tyres / Tyre repair
Wheel balance / Small implement tyres
Batteries – car & marine

Fire Brigade Patron cuts the ribbon

During August, the brigade attended a total of nine calls ranging from three medical, three fire related and three motor vehicle incidents. This totals to 76 so far for the year, 100 calls down from our weather events in 2023.

With the settled weather we all still need to take precautions and maintenance to prevent risks. Have gutters, spouting and water exits cleared frequently, inspect trees and structures for signs of deterioration, and restock emergency kits for periods of isolation.

With severe weather becoming more common these tasks can

prevent problems starting.

Our Whangamata Fire Brigade kitchen has been upgraded and our members and guests enjoyed a shared dinner following Ralph and Doreen Pitcher cutting the ribbon.

Both have been an active part of our brigade for over 58 years with Ralph also being our brigade patron. This upgrade allows our brigade to keep our strong family values but also during large incidents we are able to function more efficiently and allow members to have better rest breaks.

Wishing a safe and happy Spring.

- CFO Nigel Airey



Ralph & Doreen Pitcher cut the ribbon.

To the **EDITOR**

We welcome your letters! Email to: whangamatanews@gmail.com

Climate change debate

I follow with interest the letters to the editor regarding climate change. John Lipscomb's recent attack on Bernard Payne sadly turned personal with talk of likening opposing views as somehow being related to the Nazis which was unwarranted.

I am very well travelled and see both sides of the equation, but the point I would like to make is - who stands to gain? As always 'follow the money'.

John's comment that NASA's research on change is supported by 97% of 'climate scientists'

needs to be rationally reviewed. Sadly in my experience 'scientists', 'experts' and 'researchers' tend to produce results and statistics that support their paymasters, who often have ulterior motives.

It would be very foolish to ignore that relationship.

The excessive taxation and control that various left leaning governments have implemented in the name of 'climate change' have made no impact on the climate to date, but they have negatively affected the incomes and spending power of their citizens.

And that should be evaluated too.

Richard Brown

Whangamata
Bridge Club

Free Lessons!

**Body not so agile these days?
Use BRIDGE to help your brain.**

For more info, call or text 027 209 9741

Curtains and Blinds and More



Whangamatā and surrounds for:

- Curtains, Sheers, and Linings
- Sun-screen, Light-filter, & Blockout Roller Blinds
- Wood, PVC, and Aluminium Venetian Blinds
- Honeycomb Blinds | Roman Blinds
- Wood and PVC Shutters
- Motorisation and Automation
- Locally owned and operated providing a complete in-home service from consultation to installation

Contact Louize or Gavin on
027 4777 916
or email info@curtainsandblinds.co.nz

RSA WHANGAMATA



OPEN 6 DAYS
Tuesdays to Sundays from 12 noon

Live shows & entertainment
Families welcome!
Come in on Tuesdays for RSA Gold Card Deals

WHANGAMATA RSA PRESENTS
LEX GREAVES SPECIAL GUEST RANGI LEGGAM
SUNDAY 13th October 4PM - 7PM
\$5 door charge

GLENN CARLEY 26th OCTOBER
\$5 DOOR CHARGE
7PM - 10PM
@ THE WHANGAMATA RSA

HELEN RILEY
Welcomes you to an afternoon of music
DOOR CHARGE \$5
SUNDAY 20 OCTOBER 4PM - 7PM

Halloween DISCO PARTY
31 OCTOBER 5:00PM - 7:00PM

Ying's Thai & European Cuisine
OPEN 6 DAYS: TUE-SUN
LUNCH, DINNER & TAKEAWAYS
Everyone welcome
Lunches daily 11am-3pm • Dinner from 5pm
P. 07 865 9419 @whangamatarsa www.whangamatarsa.com

Obituary: Larree Wallace

A very sad farewell to a wonderful lady whose brilliant smile and joie de vivre lit up our town for over 20 years.

RIP Larree Wallace, who died on 16 September, and whom we honoured at the Whangamata Club on 26 September with a send off she would have loved, laughed, sang along and probably danced to as well! And then she would have slipped off for a quick turn on those favourite pokies!

After working here at Westpac Bank where her smile welcomed all comers, Larree hadn't long retired before she departed Whangamatā just seven years ago, to take up another stage in her life with new partner Dave Muir at the Greenwood Park Retirement Village in Welcome Bay, Tauranga, where again she became a shining light producing several highly acclaimed musical productions just as she had done to our enjoyment for many years for the local Theatre Society here.

Well known at Westpac by many of the townsfolk and local business owners, Larree used that banking acumen to apply it to her role as Treasurer at the Theatre Society for several years, a Society whose coffers she filled regularly with her highly acclaimed musical productions which she regularly starred in as a singer with a pure voice, as a highly talented pianist and as a very popular Director. Many in this town will attest to her ability to bring out the best in

the worst of us. She had the ability to transform the hopeless singers into superstars! A truly generous professional. And that generosity of talent, her spirit and love of life, friends and family, ran over into all aspects of her life including her love of entertaining when parties at her welcoming home in Given Ave, were always joyous, memorable occasions usually ending around the piano singing many old favourites to Larree's accompaniment.

Her passion for theatre apart, she was also an excellent golfer, a member of the Whangamata Golf Club where she consistently displayed an enviable natural talent for the game.

With heartfelt tributes from partner Dave, family and friends, with memories from the likes of Greg Amos and other locals presently out of town, her memory was further honoured by a haunting duet of the old Everly Brothers number Dream, beautifully sung by the highly talented local songbirds, Sandie Moss and Tracey Blake. From sadness to Larree's love of the stage and shows, the Whangamata Ukelele Group had everyone singing along to evocative old Music Hall faves ending appropriately with *We'll Meet Again!*

Taken too soon by the nasty brain cancer, Larree was a bright light in the lives of many. May your rest be as sweet as your heart was kind dear girl.

- Anne Hunter



SASKIA & CO

My name is Saskia, I am the new owner of my beautiful salon Saskia & Co.

Together with Hayley and Lizzy, we specialise in transformative makeovers, creative color work, and all aspects of hair styling.

We offer a complimentary consultation service, with no obligation, so you can meet your stylist and discuss your specific needs.



Open Monday to Saturday 9am to 5.30pm and Thursday and Friday till 8pm via appointment. Phone Saskia on 021 045 1236 or 07 865 8872.

For your design needs

- Adverts
- Signs
- Posters
- Flyers
- Magazines
- Business cards
- Gift vouchers and more...

Contact Anna Gledhill
aljgledhill@gmail.com or 021 653 148

Designer for Whangamatā News & the Repco Beach Hop 24 programme



Fashion Parade

LABOUR WEEKEND
Sunday
27 October
11am



Hello friday
Pauanui Village



Richmond Villas

LIFESTYLE VILLAGE

*Living the lifestyle,
loving the choice...*

A Lifestyle Village in Thames on the Coromandel

AVAILABLE NOW:

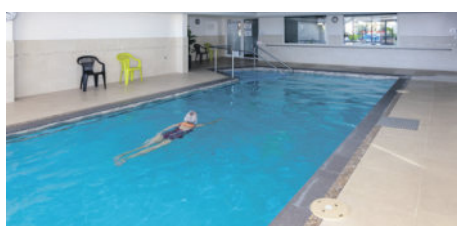
- 2 BEDROOM VILLA
- 3 BEDROOM VILLA
- 2 BEDROOM APARTMENT

ENQUIRE TODAY!

All villas and apartments are within walking distance to Thames' shops, cafes and walkways. The perfect location to enjoy your fun-filled retirement.

Our open plan, single level apartments feature covered balconies with fantastic views of the sea, Kuaeranga River and mountains.

Each unit's elegantly finished kitchen, lounge, bedroom and bathroom offer stylish warmth and light. All residents enjoy scenic views from each level's shared lounges, use of the Village Community lodge and participation in all activities and amenities at your leisure.



Phone us to view by appointment
Come and experience the difference!



82 Richmond Street, Thames
0800 868 5484
www.richmondvillas.co.nz

Once Upon a Dream



Whangamatā Dance Studio end of year production will delight us all, I am sure! The show concept is **Sleeping Beauty with a twist. We follow Rose (Sleeping Beauty) through her dreams as she figures out the power of love and her way back home.**

The Dance Studio will have an incredible 132 dancers performing ranging in age from 5 to 18 years.

Throughout the year all the dancers work really hard on their exam work and this year they all did exceptionally well across the board.

Two students to note are Lexi Meyer and Lucy Sergent who both received scholarship nominations

in Hip Hop. This allows them to attend a National Masterclass Workshop in Wellington where they train with world-class instructors and collaborate with other talented dancers from around the country. This scholarship is only awarded to a select number of students who NZAMD examiners feel display the highest quality of performance.

Unfortunately, this year the NZAMD scholarship weekend falls on the same weekend as our show. Both students (who have main roles in the show) have decided to remain and perform.

- Amy Toroa,
Whangamatā Dance Studio

Cast: Rose: Torah Kennings (Sleeping Beauty)
Fairy Godmothers: Sage Dunn, Pippi Haddock, Lucy Sergent
Maleficent: Charlotte Lima

Supporting Cast: Ivy Joyce, Emily Archer, Lexie Mainwaring, India Kennings, Lexi Meyer, Zippora Brown.

Shows are Friday, 1 November 7pm, Saturday, 2 November, 1pm and 7pm, just three shows - be quick for tickets!

Tickets on sale via www.whangamatadancestudio.com or at the Information Centre. \$20 each.

Adventure Race this Saturday



Whangamatā Adventure Race, brought to you by Crazy Kea Events, is taking place this weekend (12 October).

Get ready to embark on an unforgettable journey through the stunning coastal town of Whangamatā, New Zealand.

This exhilarating multi-sport event invites you to embrace the spirit of adventure and discover the joy of outdoor challenges. Join them for a day filled with excitement, camaraderie, and fun!

The Whangamatā Adventure Race, featuring trail running, mountain biking, orienteering, and surprise

challenges, is designed to cater to participants of all levels. Whether you're a seasoned athlete or a first-time adventurer, this event promises a memorable experience in the heart of nature's beauty.

Gather your friends, form a team, and prepare to create lasting memories as you tackle this extraordinary course. Join in for an adventure that will leave you smiling from ear to ear. The Whangamatā Adventure Race awaits, where the joy of the journey is the ultimate reward!

Enter now!
Go to whangamatataevents.co.nz

Back to the Future delights audience

A highlight of term three learning at Hikui school was the planning, preparation and performance of the school production. This event only happens every three years and is a much loved part of the arts curriculum.

Work started way back in term two, with students so keen that music choices were selected and dance rehearsals began immediately. Lunchtimes became dance classes and the older pupils taught the younger ones all the moves.

The seniors decided upon the theme. *Back to the Future* is a brand new TV game show. The hosts traveled in the time machine DeLorean car and visited the 50s, 60s, 70s, 80's, 90's and 2000's. Finding out what life was like and celebrating each decade. Our live studio audience (yes, audience participation was

expected) got to be a part of the action through quiz questions and points.

The show opened to full houses on both nights at the end of the term and also included a matinee performance for those who could not make the evening shows.

It was great to see community members not connected to the school in the audience, including a group from Tairia Residential Care who were invited to attend. Feedback from the whole community was that the show was very much enjoyed by all and has a real kid-made feel.

Hikui school is a small rural school and would like to acknowledge all the work put in by students, staff, families and the community who all supported this big ticket event and made it the success it was.



Lambs and horses come to school



Next term, Hikui School has their Pet Day on Friday, 25 October. This will be awesome and a real photo opportunity if it's anything like last year.

Pet Day celebrates our rural life learning point of difference as a little country school. We had lambs and a horse last year along with a stack of dogs and dog trials that were a real hoot!

School athletics day is on Thursday, 31 October and will be a whole school family day of the usual athletics Day sports. Come along and join our adventure of learning!



\$1 WINGS WEDNESDAY

from 4:30pm until sold out

FULL SIZE BUFFALO WINGS!!

\$1 PER WING!!

Dine in only

conditions apply

Pasta Thursday

ANY HAUS PASTA & EITHER A PINT OF TAP BEER OR GLASS OF HAUS WINE

Only \$23

Conditions apply

FRIDAY SHOUT

\$10 PINTS
\$10 PIZZAS
\$10 HOUSE WINE
\$10 COCKTAIL

Every Friday 2:30pm - 5:30pm

Pizzas are available for dine in or takeaway

SHELLFISH SATURDAY

GRAB 1KG OF NZ GREENLIPPED MUSSELS W GARLIC BREAD + A PINT OF TAP BEER OR GLASS OF HOUSE WINE

ONLY \$25

GIVE A SCHNIT SUNDAYS

Choose from chicken or pork + pint of tap beer or glass of house wine

Conditions apply

Served w fries, slaw & gravy

-ONLY-\$20

Follow us on Facebook & Instagram to keep up to date with all our events & deals @crafthauswhanga

CRAFT HAUS
Gastropub Est. 2022

711 Port Road, Whangamata
@crafthauswhanga - www.crafthauswhanga.co.nz
07 865 6300

'That Bloody Woman' punk rock musical set for stage



Whangamatā News caught up with Bianca Till, Director, and Sacha Ulrich, Production Manager, from the Waihi Drama Society, to talk about their rock opera *That Bloody Woman*.

The musical is a journey about Kate Sheppard, her travels to New Zealand and joining the Women's Christian Temperance Union.

Three local Whangamatā talents have joined the Waihi Drama Society cast, Sandie Moss plays the part of Mary Levitt, Adelle Eddy is lead guitarist in The Hallelujah Bonnets and Tracey Blake is Jennie, Kate Sheppard's best friend. The lead role of Kate Sheppard is played by Tracey Carter from Katikati.

The story unravels how women in the day petitioned to get the vote, how many times they had to do it and what they came up against.

The temperance community was a powerful lobby group. The New Zealand Alliance urged its supporters to abandon voting on party lines for members of Parliament, and to vote only for those candidates who had a record of supporting prohibition.

Now obviously we can't say too much about the rock musical, but know the show features a cast of 19, including a four member rock band, with students from Waihi, Paeroa and Katikati Colleges, we know that many enthusiasts will definitely travel to see the show, being central and accessible for all to come to Waihi.

Written by two kiwi guys, Gregory

Cooper and Luke Di Somma's, starting in 2016 at the Christchurch Fringe Festival and then on to Auckland Theatre Company in 2018 and also the Auckland Musical Theatre and in the last two years it has been around the country.

Bianca told us "I hadn't seen it, but heard it was amazing, it was held in Rotorua so I went to see it, I was engaged from the beginning through to the end, that's what hooked me, together with the ensemble, I really wanted to include our teenagers here in Waihi".

The show has both boys and girls ensembles, Bianca said "we know the band has to be really good and the singing has to be really good, it's a rock opera without a lot of situational scenes, its songs, songs, songs."

I'm sure the production will take a lot of the youth totally out of their comfort zones, for some, it's their first time on stage. Musical Director, Victoria Menary, is a local teacher from Waihi Beach, so bring it on Victoria.... I cant wait to hear them 'rock it out'. And Bianca, this is so exciting, I'm even more happy to know it contains strong language!

Tickets are just \$30 or \$27 for members and you can book online at waihidrama.co.nz

Shows are Thursday 17 to Saturday 19 October, 7pm, Sunday 20 October, 4pm matinee, and then Thursday 24 to Saturday 26 October, 7pm.

- Jennie Black



Whangamata

PRECISION[®]
REAL ESTATE MREINZ

Recipe For Success

The 4 essentials to sell your home

1. Great Photos
2. Effective Marketing
3. Exceptional Closing & Negotiating Skills
4. Relentless Agent On Your Side

We will stage/style your property for free!
Photos are important, we do everything we can to make sure they are fantastic.
My commission rate is extremely competitive. I have been successfully selling real estate for 30 years in all market conditions.
You don't need a big team, you need someone who will get the job done!

"We would unreservedly recommend Phil Clark as one of the hardest working, ethical real estate agents we have ever had the pleasure to work with."

PHIL CLARK 021 940 041
Precision Real Estate Ltd MREINZ Licensed REA 2008

Arts Collective – an absolute array of skill

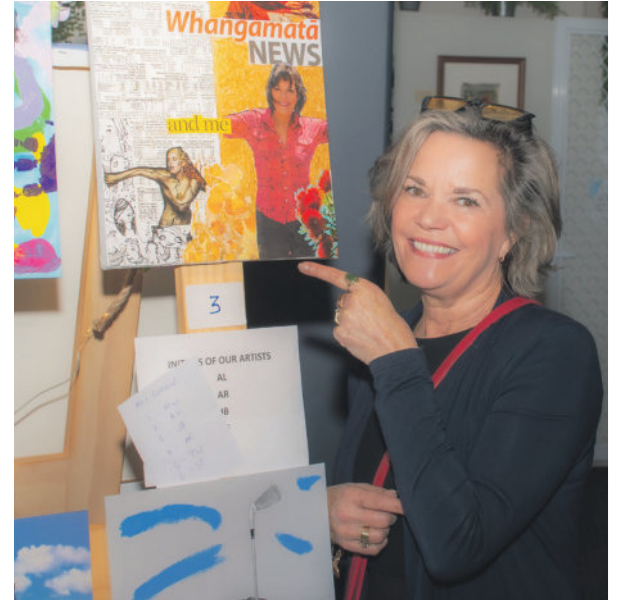
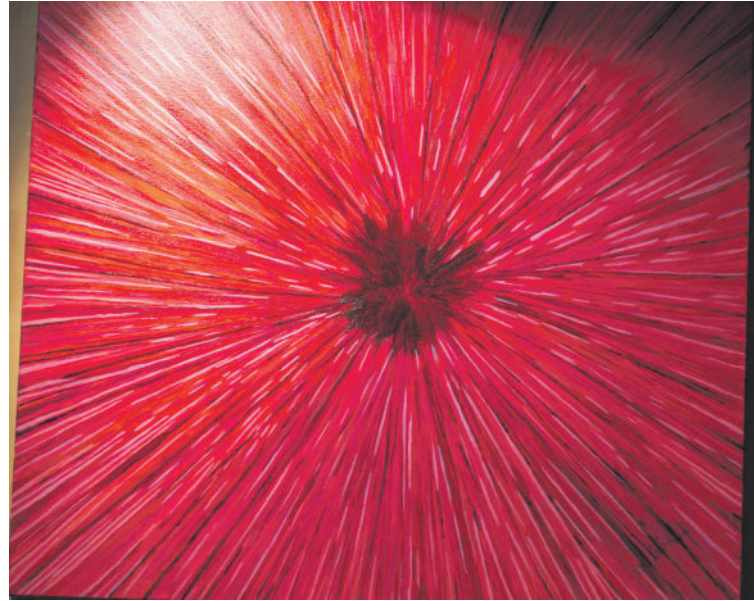
What a pleasure it was to attend the Arts Collective' *Touch of Spring* on Sunday afternoon, 29 September, at the Whangamata Club.

The talent was, as always, incredibly high, great spot prizes and of course there was the mystery celebrity challenge.

Great nibbles and drinkies, commentary from Graeme Smith and with Heather Watts at the helm, it was the best outing for a long time!

I hope you saw the incredible insights from the talented artists for Whangamatā, along with a few mystery celebrities who submitted their best.

– Jennie Black





Join Us AT THE **WHANGAMATA CLUB**



THE WHANGAMATA CLUB PRESENTS



GERRI AND ARMAND

SATURDAY 12TH OCTOBER
6:30 PM

Toucan
Cause two Can!

Featuring V.A.C. Award Winners



WHANGAMATA CLUB

Ken Strong Karen Davy

Saturday 19th October
6.30pm - Late

LABOUR WEEKEND ENTERTAINMENT



RUDE INTRUSION LIVE

LABOUR WEEKEND
SAT OCT 26
WHANGAMATA CLUB - FROM 7.30 PM

The Whangamata Club Presents

Gerry Lee

New Zealand's Premier
Rock n Roll Pianist

Sunday 27TH October
from 6:30pm



**OPEN
DAILY FROM
11AM**

BISTRO

Monday - Friday from 3pm
Saturday & Sunday from 12pm

DINNER MENU

From 5pm daily

RESTAURANT

Friday to Sunday from 5:30pm

404 PORT ROAD

FACEBOOK.COM/THEWHANGACLUB

WWW.WHANGAMATACLUB.CO.NZ

P. 07 865 8705

Surf Club in urgent need of funding to complete renovations



Where are we at?

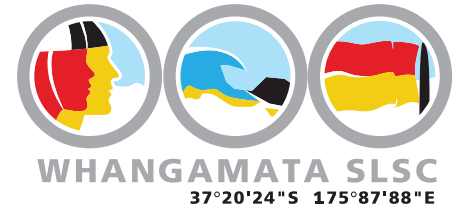
The project timeline has been pushed out to accommodate modifications to our original plans. These changes have been required to respond to a number of unknowns discovered during the demolition stage and, more importantly, to reflect some external and internal enhancements generated by discussions over Easter. Our original design and plans, for budget reasons, were largely based on exterior and structural remediation and renovation with many internal spaces and features remaining largely untouched. The revised plans reflect exterior and interior enhancements to the club which will enhance operational and member experience – both aesthetically and functionally.

These discoveries and new features required additional engineering and design inputs and a modification to our consented plans. A revised cost estimate has also been developed, firming up some of the provisional estimates we already had in place.

What are some of the new features?

The renovations will now encapsulate:

- Re-fitting the ground floor space to: (a) expand female changing and shower facilities – to reflect the gender balance of our life guards (at least 50% being young women); (b) provide more privacy for patients in our first aid facility; (c) ensure floor surfaces and suitable drying facilities so the ground floor is an appropriate “wet” space, avoiding the impact of sand and water on the upper floor areas.
- Installing of new larger skylights; raising window/door heights to significantly improve the natural lighting on the first floor.
- Replace, upgrade, and modernise the first aid room; toilets, kitchen and meeting areas to provide the ambiance and functionality to the spaces created by the main renovations – including durable floor coverings to minimise the impact of sand and water. This includes reflecting gender balance



re amenities and also providing for better disabled and age access to all Club spaces.

- Improving ventilation and heating throughout both floors, with specific focus on the downstairs toilet and changing room areas. Consolidate and update the electrical distribution/wiring through the club (ensuring the extended patrol tower has fit-for-purpose electrical and data capability).
- Installing new outdoor showers for club members – particularly our nearly 200 junior surf participants.
- Modernising the fit-out of our extended patrol tower/mezzanine area – and public access area.
- Adding new exterior supports to enable better/extended shading across the decks/front of the club – which are used extensively by lifeguards on patrol.

To create the Club we want for 2025, we still need additional funds to get to the finish line.

At this stage we have an estimated funding gap of around \$500,000. This reflects a total project cost of around \$300,000 more than our initial projections. The design changes we have had to make for structural and safety reasons, along with the new internal and external features mentioned above has bumped up our funding needs.

We have had strong levels of support from Surf Lifesaving New Zealand, Trust Waikato along with significant contributions from the Lotteries Board and a number of individuals connected with the Club and the Whangamatā community. A big thanks to them all!

To make a donation visit our website Project Transform or contact Dianna (Dide) manager@whangamatasurf.co.nz or reach out to our Project Director direct (Bryan Black) at bryan@manco.co.nz).

FLOORINGXTRA.CO.NZ

FLOORING TO SUIT YOUR STYLE

CARPET • VINYL • TIMBER • LAMINATE • RUGS

Phone or email us! We're measuring & laying! View samples instore!

Whangamata | 636 Port Road | 07 865 8562 | whangamata@flooringxtra.co.nz

Half Marathon reached record numbers

Whangamatā News Couch to 10km: Finish time 1:34:54

The 2024 G.J. Gardner Homes Whangamatā Half Marathon reached record numbers of 1718 entrants.

Sitting at The Wallow's new location at Beach Access 4, Hunt Road on the Tuesday after the event, a passer-by approaches asking "Are you the local celebrity runner from The Wallow? How did it go?".

If you don't count the mercy call for a pair of shorts to replace the ones that split early on the course, judging by the results - it went great.

"I think I want to do it again" Liam admits, surprised at his own words. "I never in a million years thought I'd say that, but I know I can do it better".

"Everyone was so supportive and the positivity vibe was amazing. On event day it makes you feel way fitter and faster than you actually are," laughs Liam.

"From the start hooter to Williamson Golf Course - I went too hard. Then I realised I wasn't even a quarter of the way there!"

Hugs and cheer signs from the kids at the halfway mark bolstered spirits, along with a surprise beer from a friend on-course for some



questionable refreshment, and Liam was feeling optimistic about the last 1km.

"I had 1km to go and I said to myself 'you can run from here, you can do this' he recounts, then adding "I lasted maybe 200m and thought 'nope'."

"Then, I was in front of Williamson Park and people were cheering me on saying 'come on Tusky,

finish strong. You can do this - run brother!."

Crossing the finish line in a time of 1 hour 34 minutes and 54 seconds Liam not only completed the 10km event, he won his wager with Whangamatā Adventure Run organiser Ryan Thompson. While stakes were never named, Liam completed the 10km faster than Ryan finished his half marathon



(Ryan's final time was 1:48:11 for the 21km).

"I think I actually did more than 10km" claims Liam, "with all the high fives and hugs from people I was weaving back & forth to different people which definitely would have added up to more than 10km".

The 2024 G.J. Gardner Homes Whangamatā Half Marathon reached record numbers of 1718 entrants. Liam "Tusky" Bethell did not think he'd be one of them, but thanks to the Whangamatā News Couch to 10km, Liam conquered his goal, and maybe inspired a few others to also give it a go. There's always next year too - save the date for Saturday 20 September 2025.



Power and performance

Limited numbers
SPRING SPECIAL

SAVE \$1000

Q CARD
24 MONTHS INTEREST FREE*

LONG TERM FINANCE

*24 months interest free is available on Long Term Finance (LTF) for in-store purchases only until 31/12/2024. Min spend \$3,490. Lending criteria, \$50 annual Account Fee, fees Ts&Cs apply. \$55 Establishment Fee applies to your first LTF transaction, \$35 Advance Fee applies to subsequent LTF transactions. Min payments of 3% of the monthly closing balance or \$10 (whichever is greater) are required throughout interest free period. Paying only the minimum monthly payments will not fully repay the loan before the end of the interest free period. Q Mastercard or Q Card Standard Interest Rate (28.95% p.a.) applies at the end of LTF Interest Free Period. Rates and fees subject to change. Columbus Financial Services Limited and Consumer Finance Limited reserve the right to amend, suspend or terminate the offer and these T&Cs at any time without notice. Valid 01/09/2024 - 31/12/2024.

TS142T
42" Deck, Hydrostatic Transmission, 25hp Husqvarna Series V-Twin Engine

\$6,240
\$6,990 RRP

TS142TXD
42" cut, V-Twin Kawasaki engine, pedal operated hydrostatic transmission, auto locking differential.

\$6,990
\$7,990 RRP

Offers valid while stocks last.

Shaun Prescott, Sales Manager
021 285 4870 / 07 864 7801
1 Hikuai Settlement Road, Hikuai
www.prescottsgarages.co.nz

5 YEAR DOMESTIC WARRANTY#
Terms and Conditions apply, see HUSQVARNA.COM for details.

We sell and service Husqvarna's huge range of product. We also demonstrate and deliver.

Visit husqvarna.com today

Overall Best Team

The Waihi Junior Rugby Club sent 3 teams to the New Zealand Junior Rugby Festival in Taupō and returned home with the Ultimate Prize and more! 134 teams

competed from 67 clubs from Thursday 19th September to Sunday 22nd. Waihi sent an Under 10s 49kg and Under 11s 49kg, and Under 12s 57kg.



The Whangamatā team members.



Becoming the New Zealand Junior Rugby winners of the Overall Best Team Award 2024 - Waihi Under 12s.

Waihi Under 12s chose to combine their team with players from around the Thames Valley district - four boys from Whangamatā were selected: Kobe Mulrennan, Millen Lloyd, Maddox Smith and Dacey Woodyard.

These boys played a pivotal role in the team and helped bring the big

trophy home to Waihi.

The team and coaches also want to shout out to their incredible sponsors who helped them get there: EPL Construction and Waikino Estate who sponsored hoodies for all the players and coaches; Oceana Gold who donated towards food and expenses for the tournament.

Thames Valley victorious

Thames Valley U19 Boys emerged victorious at the Whangamata Rugby Ground on Saturday, 28 September. It was a closely contested match against Waikato Harlequins in the Northern Regions U18 Tama Ora competition, with Max Baker securing the win with a penalty conversion in the final minutes. The match ended 27-24, crowning Thames Valley as the tournament champions.

- Don Mackay, Photos by Mark James



League in Whanga takes flight

The Whangamatā Whai was brought to life by Daniel Paul 2023. This club was born out of necessity for our youngsters who wanted to play league. Kids from Whangamatā would attend one off tournaments for rugby league but never get to play a season. Thus the Whangamatā Whai Rugby League Club was born.

2023 saw humble beginnings for the Whangamatā Whai with forty players registered. Fast forward one year to 2024 with 128 registered players, seven kids teams and

one senior men's. Rugby league in Whangamatā was taking flight. Our main focus as a club is our tamariki first. With that mind-frame we would always have kids coming through the club wanting to play. A club is nothing without its junior players. A huge push we had this year was promoting the game to our girls. With the NRLW taking off and the Warriors bringing back their women's team, the game of league is thriving for our young kotiro. Thanks to some words of motivation from players like Kiwi *Fern Honey

Hireme-Smiler, Canberra Raider Zahara Temara and captain of the Gold Coast Titans Georgia Hale we were able to achieve that goal with 13 registered girl players.

2024 saw huge growth for tamariki interested in rugby league and the Whangamatā community threw its support behind our juniors and seniors. Our players span across Tairua, Hikuai, Opoutere, Whangamatā, Waihi and Raglan. The junior competition is run by Hauraki District Rugby League, other clubs who have teams in our district include Tairua, Whitianga, Manaia, Thames, Ngatea, Paeroa, Te Aroha and Matamata.

This year we were able to purchase team jerseys for our kids, all thanks to sponsors and whanau. The jersey design is special and significant to Whangamatā. Whangamatā sits in Te Tara o Te Ika (Barb of the fish) of Te Ika a Maui (North Island) which resembles a stingray or Whai. A collective of stingrays is called a fever. The term 'fever' is linked to how they move. Coordinated, energetic and fearsome, resembling a feverish swarm. Their wings move through water, appearing to fly and they often travel in large competitive groups.. A couple of our famous



club mottos are 'Up the Whai' and 'Wings up!' You can find out a bit more about us on Facebook.

Our men's team have been successful in their first season - making the semi finals this weekend. With a good chance of making grand finals. Local players make up the men's team and are all home grown heroes in our young players eyes. Tradies throughout the working week transform into the Whangamatā Whai warriors on the weekend. Led by coaches David Dyer and Daniel Paul. Both are just happy to see rugby league being played in Whangamatā and the wider Hauraki. Whangamatā Whai, Chair, Stephanie Paul says bring on the women's team!

- Photos by Mark James



Spring is in the air - and with this comes a new chapter in cycling in Whangamatā



Highline
MTB
BIKES • BEACH • COMMUNITY

All thriving retail and customer focused stores require motivated, engaging owners. A new era has begun at Whangamata Cycle and Outdoors, known as Pedal & Paddle, with Mike and Trae taking over the cycling side of the business located at 700 Port Rd.

They have brought over Highline MTB from its original location and began trading on the 1st of October from the iconic Pedal & Paddle building.

Mike and Trae will continue and, indeed, add considerable knowledge and application as cycling continues to thrive. They are cornerstone supporters of the world class Whangamata Ridges MTB park.

Chris will continue with urban hire, watersports, kayak and SUP hire. Tours will be added to Whenuakura Island again, and the spectacular coastal region here at the Paradise coast.

A new central location will be the venue... Watch this space!



OPEN 6 DAYS

700 PORT RD, WHANGAMATA

Mike 021 498 763

Chris 027 224 2207

Keep looking when you're cooking

Whangamatā News caught up with Paul Hughes, organiser of the Whangamata Fire Brigade open day last weekend.

A good crowd turned out to see educational displays to keep the message strong to save lives. Paul told us "the main purpose of the open day is to educate people, this is not entertainment to see fires.

"We set up a kitchen fire at night to showcase good, safe kitchen practices. Keep looking when you're cooking, don't drink and fry. We had an oil fire on the stove, to show how you can put a lid or a chopping board on it, but never put water on the oil fire, it will explode. Get out, escape and call the fire brigade"

They discussed, with the crowd, the importance of families with young children to have an escape plan in your house.

The open day also showed the cutting up of a vehicle and the extraction of a patient - god forbid that would be required in Whangamata.

Paul said "like a lot of what we do, we have to train regularly - we know it will happen one day."

It was great to see the Whiritoa Volunteer also attended the annual event.

- Jennie Black



Come HOME to paradise AND LIVE IN A SERVICED APARTMENT

Serviced apartments make life easier and more comfortable for those who need support with day-to-day tasks. Support is available from healthcare professionals, carers, and housekeeping staff within the comfort of your own home. Retain privacy and independence without compromising on care or companionship.

We have two serviced apartments available—both are comfortable, safe, warm one-bedroom homes in a friendly garden setting. The kitchenette flows into an open plan living and dining area. There is a separate bedroom and an ensuite with a level entry shower and lots of storage. The bathroom is especially equipped with fixtures and fittings designed for comfort, safety, and ease of use.

An easy access shower with well placed grab rails assists residents whose mobility is compromised. There is also a 24/7 emergency call button located in the bathroom.

Staying active and connecting with others is easy from these serviced apartments. Centrally located in the heart of the facility, down the hall from the activities room, these apartments are your gateway for enjoying everything Moana has to offer. If you need a bit of extra support with meals or personal care, we can provide these as one-off services or as a care and support package—regular household cleaning, laundry services, personal and medical care, delicious meals are some of the services on offer.

These apartments are under an ORA (Occupational Right Agreement).

For more information, please phone (07) 865 9643
Deborah Pudfield (General Manager)
353 Tairua Road, Whangamata

MOANA HOUSE & VILLAGE

He whare ahuru – a caring safe place

Don't just dream it, live it



Your Bach or Development Opportunity

1005 Port Road, Whangamata

2 🚗 1 🚿 2 🚗

Auction 9 November 2024 at 1pm (unless sold prior)

Venue: 328 Ocean Road, Whangamata

- 1012m² extra density zoned development opportunity
- 2-bedroom 1960s bach
- Sleepout
- Separate double garage
- 3 houses from the wharf and Whangamata Ocean Sports Club
- One block from the surf
- Easy walk to cafés and shops
- Secure this rare opportunity

View 3pm Saturday 12th and 19th October



Chris & Katie Speedy

M 021 747 901 & 021 382 022

View Listing whanga.co/8376



Prime Beach Zone

124 Ranfurly Road, Whangamata

4 🚗 3 🚿 2 🚗

Auction 9 November 2024 at 1pm (unless sold prior)

Venue: 328 Ocean Road, Whangamata

- Experience executive beach living with all the comforts in this brand-new, never-lived-in property
- Situated in a prime Whangamata location
- Designer kitchen with scullery
- North-facing deck for effortless entertaining
- Freehold title
- Lift for easy access
- Ducted heat pumps and outdoor heater
- Wired for an EV charger

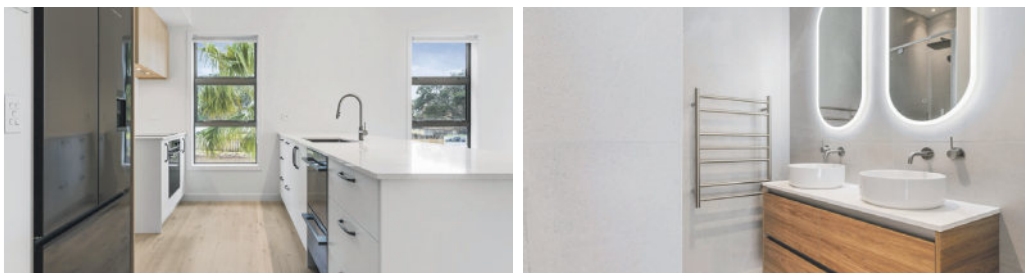
View 12pm Saturday 12th and 19th October



Chris & Katie Speedy

M 021 747 901 & 021 382 022

View Listing whanga.co/8376



Space & Location

131B Barbara Avenue, Whangamata

5 🚗 2 🚿 2 🚗

Auction 9 November 2024 at 1pm (unless sold prior)

Venue: 328 Ocean Road, Whangamata

- This two-level home has room for all, with 5 double bedrooms, 2 bathrooms, and an internally accessed double garage
- Located just a short distance from the beach and town center
- Perfect for a permanent residence or holiday home
- The first-floor living space flows seamlessly to the outdoor entertaining area, complete with a louvre roof

View 1pm Saturday 12th and 19th October



Chris & Katie Speedy

M 021 747 901 & 021 382 022

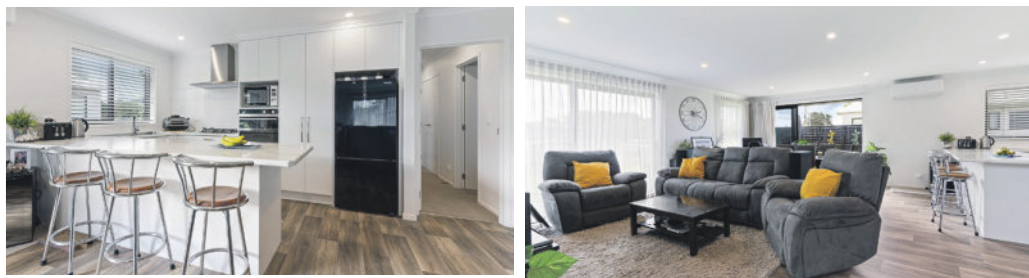
View Listing whanga.co/8376



Whangamata Real Estate

WHANGAMATA REAL ESTATE 2024 LTD (LICENSED REAA 2008)

Don't just dream it, live it



Solid Beach Opportunity

308A Given Avenue, Whangamata

3 3

Auction 9 November 2024 at 1pm (unless sold prior)

Venue: 328 Ocean Road, Whangamata

- Very well presented 3 ½ year old home
- 3 double bedrooms plus serviced studio area
- Open plan easy living opening onto a screened patio
- Spacious main with ensuite and wardrobe
- Internal access garaging with combined laundry
- Modern low maintenance construction
- Excellent beach and estuary location
- Just add the finishing landscape design and make it yours

View 1pm Saturday 12 October and 19 October



Colin Thompson
M 021 723 723

View Listing whanga.co/8381



Reserve Front – Overlooking Marina

111 Moana Anu Anu Avenue, Whangamata

3 2 2

Deadline Sale 4pm 31 October (unless sold prior)

- Spacious three bedroom single level home
- Master bedroom with ensuite and walk in robe
- Open plan kitchen dining and lounge connected to north facing decks
- Kitchen enjoys morning sun and a view of the boats
- Lounge warmed by natural sun, heatpump or wood burner
- Recently renovated bathroom with separate toilet
- Large double garage / workshop
- Established fruit trees and gardens
- Ample off street parking for boats and campervans

View 12pm Saturday 12 October and 19 October



Sharon Laurenson
M 027 662 3164

View Listing whanga.co/8378



Beach Base or Holiday Haven

131B Tangaroa Road

4 2

Enquiries over \$1,390,000

- Beach location, across the road to sand, surf and swimming
- Peeps of ocean and Mayor Island
- Four bedrooms accommodate a crowd
- Two lounges gives plenty of space and choice
- Dual bathrooms (one on each level) keep life simple
- Internal access storage garage keeps all the toys stowed and safe
- Excellent storage providing space for bikes, boats and boards.
- Outdoor hot / cold shower is a warm welcome after a swim
- Take this opportunity to secure your spot on a desirable street



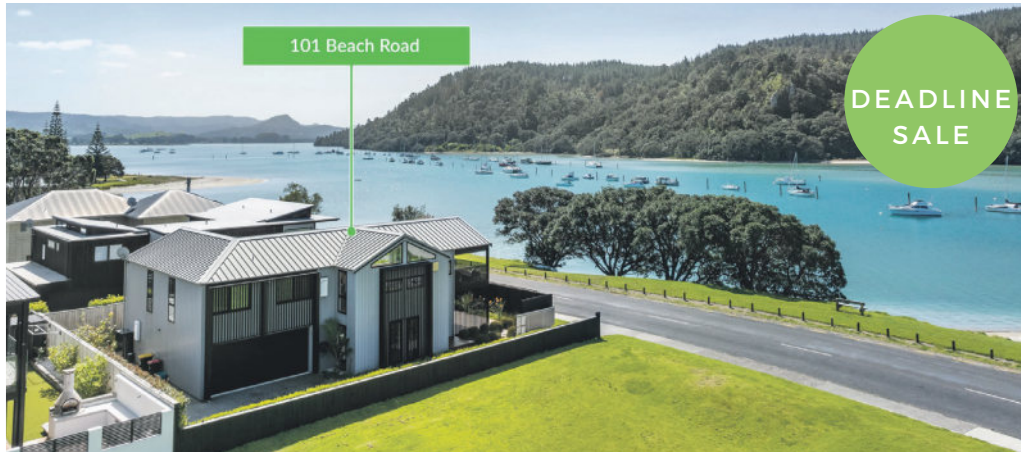
Sharon Laurenson
M 027 662 3164

View Listing whanga.co/8353

Whangamata Real Estate

WHANGAMATA REAL ESTATE 2024 LTD (LICENSED REAA 2008)

Don't just dream it, live it



Prime Harbour Front - Whangamata

101 Beach Road, Whangamata

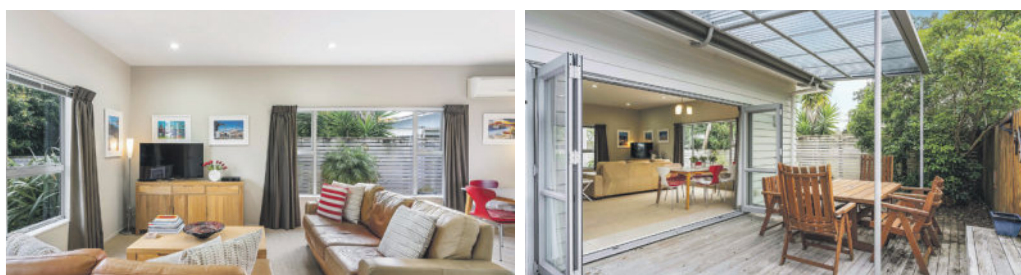
4 3 2

Deadline Sale 4pm on the 31st October 2024 (unless sold prior)

- Waterfront position, overlooking Whangamata Harbour
- Panoramic views of beach, bay, boats, wharf and headland
- Owners mooring out front, an optional extra
- Modern luxury four bedroom home on freehold title
- Clever design with quality construction and finish
- Open plan entertainer's kitchen and living area
- Elevated north facing covered deck
- Spacious master suite with walkin robe & ensuite
- Second lounge connects well to pool, sun loungers & pool bar
- Internal access double garage – fully lined and carpeted



Sharon Laurenson
M 027 662 3164
View Listing whanga.co/8376



Location wins every time

208A Ocean Road, Whangamata

3 2 1

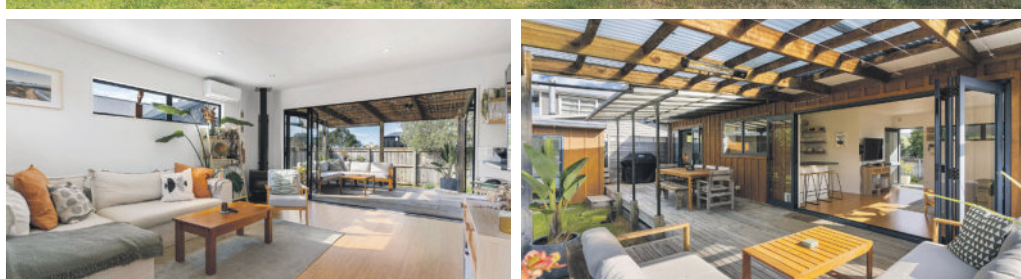
Deadline Sale 4pm, 31st October 2024 (unless sold prior)

- Central location, walk to town and beach
- Open plan easy ground floor living and sunny aspect
- Excellent connection to outdoor entertainment area
- Three double bedrooms - Master bedroom on either floor
- Dual bathrooms, one on each level
- Internal access garage and auto door
- Modern construction and features
- Low maintenance home and grounds
- The perfect lock and leave holiday or permanent home
- Selling furnished

View 2pm Saturday 12 October & 2pm Saturday 19 October



Sharon Laurenson
M 027 662 3164
View Listing whanga.co/8373



Kiwi Cracker !

112A Kiwi Road, Whangamata

2 1

Price by Negotiation

- Whether its home or holiday pad, its got the 'feel good' factor
- The view of the Golf Course (overlooking the 8th) is a bonus
- Located in the Surf Club & Golf Course zone
- 2 bedrooms plus Portacom
- New modern tiled bathroom
- Sunny open plan living
- Heat pump and fireplace
- Great indoor /outdoor flow to private deck & fenced yard
- Dual decks for catching morning and afternoon sun
- Screened Hot / Cold outdoor shower



Sharon Laurenson
M 027 662 3164
View Listing whanga.co/8376

Let's paint Pauanui pink!

It was a busy weekend in Pauanui with the second Pauanui Pink Walk taking place last Saturday.

The Pauanui Village was a wash of pink with the shop fronts being decorated with Balloon garlands on Friday morning in preparation for the event – there was no question that something very pink was happening!

The local businesses came on board

with great offers – shop and win promos, gift with purchase, guess the number of balloons competition, pink cocktails, discount vouchers for adult entrants, special pink products, raffles, a pink degustation dinner, accommodation discount offer, topped off with Sunday morning Yoga, and a ladies 9-hole golf tournament at the Lakes Resort. A full weekend of activities for everyone.



The shopping centre was a great spectacle of more than 350 entrants – men, women, children and furry friends, all dressed in pink commencing the walk at 10am and finishing at Pauanui Club for refreshments and a noon prize-giving where more than \$1500 of spot prizes were given away.

The walk was not a timed event with place getter categories, just a gentle ramble with plenty of spot prizes –

the majority of them being vouchers to spend at the local businesses. The major spot prize was one night accommodation and breakfast for two at Grand Mercure Puka Park Resort.

It was a hugely successful weekend, with great feedback bringing people to Pauanui while fundraising for Breast Cancer Foundation NZ.

– Photos supplied by Pat Courtney



A sentimental journey

We are extremely fortunate in the Coromandel to have many very talented singers – one of those is Pauanui's Owen Rogers.

Owen has been persuaded to provide an afternoon concert for people who appreciate easy listening music.



Owen appreciates that music brings people together and makes them feel good, so, if you feel like a pleasant afternoon of well-known songs, come to Pauanui.

With no open mic on the horizon and no guests in the pipeline for the rest of the year, he feels there is a gap in Pauanui's musical programme. Owen has decided to fill that gap.

He is calling it 'A Sentimental Journey' because he will sing some of the many songs that he has enjoyed over his many years. He has been singing all his life in family quartets, choirs and musical shows so he has plenty of material and plenty of practice. He will do his best to give you an entertaining and heart-warming time come and be pleasantly entertained.

A Sentimental Journey – a concert of songs sung by Owen Rogers.
Pauanui Community Church
Sunday, 13 October, at 2pm.
Gold coin donation to defray expenses.



CLASSIFIEDS

SITUATIONS VACANT

Healthcare Assistants

Part-Time, Casual and Weekend Positions Available

We are looking for part time and casual Health Care Assistants to work rostered shifts which include morning, afternoon, nights and weekends who will complement our amazing team of carers who are passionate about the health needs of older people. You will work alongside experienced staff at Moana House, an aged residential care facility, situated in the beautiful town of Whangamata.

Previous experience is preferred but not always necessary as training will be given.

Moana House has a total of 47 beds with either Rest Home or Hospital level of care.

If you are compassionate with a flexible approach, please send your CV with a covering letter to: office@moanahouse.nz or to request an application form and job description use the email address provided.

Please note, these positions do not support a Visa application.

GARAGE SALE

Treasure Trove Huge Garage Sale LABOUR WEEKEND SATURDAY & SUNDAY

Come treasure hunting...
• Appliances • Clothing (lots of labels) • Decor • Furniture • Toys

SOUTH PACIFIC MOTEL & CONFERENCE CENTRE
Port Rd, for early viewing by appointment call Carly & KB (07) 865 9580

SITUATIONS VACANT

URGENTLY REQUIRED

Part-time caregiver

Part-time caregiver needed in Whangamata to assist with personal care for lovely lady in her 70's.

Good hourly rate offered, training provided.

Phone Margaret on 865 6804.



WHANGAMATA SLSC
37°20'24"S 175°87'88"E

Whangamata Surf Life Saving Club (WSLSC) is a charitable organisation dedicated to protecting our community in the water.

An opportunity has arisen for an Administrative Assistant to provide support to our wonderful WSLSC team on a 12-month fixed term contract or contractor basis. The role will be 10 - 15 hours per week and preference will be given to candidates who can be flexible and work these hours as/when required either in the office or from home. Training will be provided to the successful applicant.

Preference will be given to those with:

- Experience as an office or administration manager with a familiarity of Xero accounts and payroll (preferred).
- Familiarity of Microsoft 365 esp. Word and Excel
- Attention to detail, self-direction and a desire to complete tasks efficiently.
- Great organisation skills.
- Excellent communication, a strong work ethic and a positive team-player attitude.
- Ability to work with a wide range of people, both internally and externally.
- Flexibility and the ability to work some weekends/public holidays if required.
- Eligibility to work in New Zealand.

Get in touch! Questions or further information wanted? Please contact the club manager on manager@whangamatasurf.co.nz including a copy of your CV. Role description is available upon request.



Trustee Vacancies

Eastern Coromandel Community Services Trust is actively looking for new volunteer trustees to fill three pending vacancies.

The board meets monthly either face to face or via Zoom, and is responsible for the oversight of the Community Services Trust which is a not-for-profit organisation delivering a range of services to our community. These include medical drives, budgeting and financial mentoring, a foodbank, Comfort Kai (weekly community meal), van services to nearby towns and cities, supported shopping, a school holiday programme, plus the delivery of a range of government contracts held with MSD and Oranga Tamariki which includes counselling and social work.

We are the only local agency of its kind covering Whangamatā, Tairua, Pauanui, Hikuai, Onemana, Opoutere and Whiritoa.

If you have governance experience, or if you aspire to become a trustee, then we would like to hear from you.

Key attributes sought based on the gaps in our skills matrix are:

- Knowledge or experience in the social sector
- Fundraising experience
- Legal skills
- Accounting skills
- An ability to guide the Board in its understanding of and respect for Tikanga
- Experience as either Chair, Treasurer and Secretary at Board level

Our values are:

**Whānau & Community Led
Whānau & Hapori**



**Respectful Relationships
Whanaungatanga**



**Confidential & Safe Space
Matapu**



**Empowering
Whakama**



**Continual Growth & Development
Poutama**



The principles of Te Tiriti o Waitangi



For more information on our activities, you can visit www.communityservices.org.nz or the Charities Office (Registration Number CC11448).

If you want to make a difference in our local community, please contact Michelle Crook (Chair) via manager@communityservices.org.nz for more information or to register your interest.

Whangamatā Tides 2024

OCTOBER 2024											
☾ New Moon: 3 rd ☀ Full Moon: 18 th											
Date	High tide	Height (m)	High tide	Height (m)	Low tide	Height (m)	Low tide	Height (m)	Sun rise	Sun set	
	AM		PM		AM		PM				
11	Fri	1:11	1.6	13:53	1.7	7:22	0.4	20:00	0.5	06:37	19:28
12	Sat	2:05	1.6	14:50	1.7	8:16	0.4	20:58	0.5	06:35	19:29
13	Sun	3:04	1.6	15:49	1.7	9:16	0.4	21:58	0.5	06:34	19:30
14	Mon	4:08	1.6	16:48	1.8	10:18	0.4	22:58	0.4	06:33	19:31
15	Tue	5:13	1.7	17:45	1.8	11:19	0.3			06:31	19:32
16	Wed	6:14	1.8	18:40	1.9	11:56	0.3	12:18	0.3	06:30	19:33
17	Thu	7:12	1.9	19:34	2.0	0:52	0.2	13:14	0.2	06:28	19:34
18	Fri	8:06	2.0	20:27	2.0	1:46	0.1	14:09	0.1	06:27	19:35
19	Sat	8:59	2.0	21:18	2.0	2:38	0	15:02	0.1	06:26	19:36
20	Sun	9:51	2.0	22:10	2.0	3:28	0	15:54	0.1	06:24	19:37
21	Mon	10:42	2.0	23:01	1.9	4:18	0	16:47	0.2	06:23	19:38
22	Tue	11:34	2.0			5:08	0.1	17:40	0.3	06:22	19:39
23	Wed	11:53	1.8	12:27	1.9	5:58	0.2	18:34	0.3	06:20	19:40
24	Thu	0:46	1.8	13:21	1.8	6:50	0.3	19:30	0.4	06:19	19:41
25	Fri	1:41	1.7	14:17	1.7	7:43	0.4	20:28	0.5	06:18	19:42

Only the BEST TRADIES will do! Use Locals... For Locals... Support Locals!

ASIAN FOOD



A&A Asian Store

Shopping made easy

17 ROSEMONT ROAD, WAIHI (opp. Farm Source)

- Japanese • Korean • Filipino • Vietnamese
- Malaysian • Thai

Ramen & Buldak noodles, corn dogs, dumplings, fish cakes, frozen meals, sweets, drinks and so much more...

FREE DELIVERY TO WHANGAMATA
Tuesday - Sunday 9am to 5pm • Phone 021 0256 107



SCAFFOLDING



SCAFFOLDING | SHRINK WRAP
TEMPORARY FENCING

027 611 6822
bradley@activesite.co.nz
www.activesite.co.nz
211 Peacocks Rd, Hamilton



SMALL ENGINE REPAIRS

ANTS REPAIRS

Whangamata-based small engine repairs & maintenance

- Chainsaws • Lawnmowers
- Ride ons • Weedeaters

121 Sharyn Pl • 021 0244 2791
ants.repairs.nz@gmail.com

LANDSCAPING

Beach Contractors & Landscape Supplies

LANDSCAPING SUPPLIES:

- | | | |
|----------------------------------|---|---|
| Bark, mulch, compost and topsoil | Sand, lime chip, river stones and pebbles | Cement, builder's mix and a range of metals |
|----------------------------------|---|---|

Delivery service available

Whangamata Yard 2546 Waihi Whangamata Rd M. 027 261 1262
Waihi Beach Yard 691 Waihi Beach Rd P. 07 863 5340

LAND DEVELOPMENT



Subdivisions
Boundary Markings
Land Use Consents Topographical Surveys
Building Setout and Certifications

Contact us
0508 4 BIRCH
tairua@birch.nz
244 Main Road, Tairua
www.birch.nz

EARTHWORKS



- Bobcat & excavator
- Tight access work
- Site works
- Topsoiling
- Driveways
- Hole drilling
- Concrete prep
- Cartage

Shay 021 742 966 | www.blackhillearthworks.co.nz
info@blackhillearthworks.co.nz

PAINTER & DECORATOR



BOOF BOLAND
PAINTER & DECORATOR

M: 0274 367 254
E: jenboof@outlook.com

IT SUPPORT



Boot it.

FIBRE INTERNET
now available to order from Boot I.T.

We are the Coromandel's only local Fibre Internet Provider, and the ONLY provider that offers 7 days per week support.

Call us on 0800 242 266 to find out more.

CONCRETE

BROWNMORE CONSTRUCTION

CONCRETE CONTRACTORS

Any Concrete Requirements: Slabs, driveways, patios, paths, etc
All types of concrete - colour - finish
Council Permits for Vehicle Crossings
Excavation to finished product • Saw cutting & drilling

We take pride in doing a quality job at a competitive rate

REX: 027 285 5489
P. 07 863 3364 • office@brownmoreconstruction.co.nz
www.brownmoreconstruction.co.nz

PAINTER & DECORATOR

Gavin Johnson PAINTER & DECORATOR

Interior/Exterior Painting
Wallpapering
Cedar Cleaning and Restoration Service

0224 552 363

brushstrokeswhangamata@gmail.com



DIGGER & CARTAGE

COAST DIGGER & CARTAGE

- Digger & Tip Truck Hire
- Driveways
- Building Digouts
- Site Works
- Concrete removal
- Track work
- Hole Drilling
- Tree Felling & Removal



Murray Clarke 027 2010 209
muzzclarke66@hotmail.com

FENCING

RURAL FENCING • RESIDENTIAL FENCING
POST AND RAIL • RETAINING WALLS
POLE SHED BUILDINGS
ORCHARD BUILDS & MAINTENANCE



BLAIN TEMPELMEYER 027 784 6538
coastlinefencing7@gmail.com

PAINTER

Coastline Property Painters

Protecting your investment ■ Interior ■ Exterior ■ Roofs ■ Communication is everything
Updates & photos as your job progresses


Call Richard Upton: 0274 884 881 / www.coastlinepropertypainters.com

Use Only the Best Services in our Community! Use Locals... For Locals... Support Locals!

OUTDOOR COVER

Covered.

- Louvres
- Privacy Panels
- Awnings
- Sails



LOUVRESYSTEMS

info@covered.co.nz 07 865 6207 or 027 497 1236
www.covered.co.nz 300 Casement Rd. Whangamata

CURTAINS / BLINDS



Specialising in:

- Curtains
- Roman Blinds
- Cushions
- Duvet Covers
- Roller Blinds
- Shutters

croft design

306 CASEMENT ROAD, WHANGAMATA
M. 0274 481 957 | E. beth@croftdesign.co.nz

CURTAINS / BLINDS

Curtains and Blinds and More
Whangamatā

LOCALLY OWNED AND OPERATED

- Curtains
- Roman Blinds
- Venetian Blinds
- Shutters
- Roller Blinds
- Honeycomb Blinds

100% Mobile Service
We come to you, Free Measure and Quote

Call Louize or Gavin
on 027 4777 916
or email info@curtainsandblinds.co.nz

FRAMING



- Picture framing
- Framed mirrors
- Art installation
- Pick up & delivery

Ade Cunningham
M. 0274 929 695 or P. 07 575 9149
info@framesnz.co.nz • www.framesnz.co.nz
118 Brook Pl, Whangamata

HANDYMAN

HANDYMAN

30 yrs experience, specialising in:

- Bathroom, deck & building repairs
- Gib fixing & plastering
- Interior /exterior painting

Please ring Rex on 021 997 428

ELECTRICIAN

GREG HENSTOCK ELECTRICIAN LTD

Registered Electrician
One Man Band

WHANGAMATA
0272 580 366



BUILDING & LANDSCAPING

HBL HANSEN BUILDERZ
BUILDING & LANDSCAPING
COMMITTED TO EXCELLENCE
Contact us to discuss your project & a free estimate today



ADRIAN 0274 263 895 | hansen.builderz@gmail.com | HBLHomesnz
Residential | Commercial | Alterations | Additions

ARCHITECTURAL BUILDERS

HOME & Lifestyle

- Architectural Builders
- Interior & Colour Design Services
- Project Management

For trusted expertise with your building project
Katrina Jackson 027 273 0685 | Leigh Goodman 027 4475 423
info@homeandlifestyle.co.nz

BUILDING WASHING

HOUSE WASHING

Exterior house or commercial building wash, roof wash, fences, driveway, patios – soft-wash for best moss and lichen clean and treatment, exterior window cleaning, or general water blasting, 100m of hose so access is no problem
Prompt local service with 20 years' experience
Ph 0800 747 787 email atlasgroup@xtra.co.nz
or dial Andy direct on 027 313 4386

CLEANING

jae we'll take care of it

- Carpet Cleaning
- Pest Control
- Flood & Fire Restoration
- Stain Removal
- Upholstery Cleaning

07 863 8358 or 0800 225 552
whangamata@jae.co.nz



AUTOMOTIVE & BOATS

JCD CUSTOMS & MARINE

BOAT TRAILERS, CARS, CLASSIC & HOT RODS

ONLY Repco STOCKIST IN TOWN! ONLY HONDA AGENT IN TOWN!

Aickin Road, Whangamata (next to Bunnings)
P. 865 9073 | E. office@jcdcustoms.co.nz
Mon-Fri from 8am



TRAVEL BROKER

Kay Gegan
TAANZ BONDED Travel Broker & CLIA Accredited Cruise Specialist

THE TRAVEL BROKERS
a member of helloworld TRAVEL LIMITED

AWARD-WINNING TAANZ BONDED TRAVEL BROKER
Travel Broker & CLIA Accredited Cruise Specialist
Whangamata 07 865 9568 | M: 027 337 6222
Kay.Gegan@thetravelbrokers.co.nz
thetravelbrokers.co.nz/kaygegan



PHOTOGRAPHER



Pete Stretch
PHOTOGRAPHY
Family portraits • Weddings • Corporate
027 458 1179
peterstretchphotography@gmail.com
20% off all family group sessions
until 30th September 2024

ADVERTISING

Whangamatā NEWS

By Locals, For Locals,
About Locals! Home delivered.
Call Jennie 021 0232 1661.



Only the BEST TRADIES will do! Use Locals... For Locals... Support Locals!

ELECTRICAL

For All Your Electrical Needs



Now Open In A Second Location
Introducing Laser Electrical Waihi

WAIHI 07 863 7746 WHANGAMATA 07 865 9309
waihi@laserelectrical.co.nz whangamata@laserelectrical.co.nz
40B Kenny Street 100 Lindsay Road

KITCHENS

McBeth Rd Orchard Joinery
Affordable joinery

Kitchens new or upgraded
Laundries & bathrooms
Wardrobes & storage units
Free estimates

Tony & Nicky Ball - 027 229 2255
Whangamata

BUTCHER

MEAT AT THE BEACH

- Specialty Cuts • NZ Home Grown Meat only
- In-Store made Sausages • Home of Whanga Bacon, Whanga Black Pudding & Ham on the Bone!

Get in to order your Christmas Ham

601 PORT ROAD, WHANGAMATA P. 07 865 7241
MON-FRI 8.30AM-5PM • SAT 8.30AM-3PM

BUILDER

MJC BUILDERS
Building with pride

- FENCING
- DECKS
- PERGOLAS
- ROOFING
- ALTERATIONS
- BUILDING REPAIRS
- CONCRETE DRIVEWAYS
- FULL LANDSCAPING



MIKE CUNNINGHAM M. 021 0677 555
E. mjc.builder.whangamata@gmail.com

TREE SPECIALIST

Nicholson
Tree Services

QUALIFIED ARBORIST

30 years experience in all aspects of tree work

- Pruning
- Felling
- Storm damage
- Hedge trimming
- Confined space dismantling
- Debris chipped
- Free quotes
- and more

Professional and reliable service – fully insured

Phone Greg Nicholson on 07 865 6769 or 021 133 0937
email: nicholsontreeservices@hotmail.com

PODIATRY

Pedicare Services

Professional Foot Care

Alison Walkington
Registered Nurse

Home visits by appointment



Mobile 027 663 2320 or
email alison.c.walkington@gmail.com

ELECTRICIAN

PITCHER ELECTRICAL



YOUR TRUSTED
MASTER ELECTRICIAN
working in Whangamata,
Opoutere, Onemana and
Whiritoa

**RESIDENTIAL AND
COMMERCIAL SERVICES**

TONY PITCHER 0274 589 573

WINDOW CLEANING



Mike Horton
info@purenclean.co.nz

M 021 501 324
www.purenclean.co.nz

HEAT PUMPS

Reef REFRIGERATION &
AIR CONDITIONING LTD

We Sell and Service all Major Brands

Your heat pump specialist
On site marine & commercial refrigeration

Call today for a hassle-free quote

027 933 8599

www.reefrefrigeration.co.nz

ROOFING

RIKKI ROOFING
we aim for the roof shout

Rikki Daysh, Owner/Operator
022 408 8424
rikkisroofing@gmail.com

- ▶ Residential re roofs & new roofs
- ▶ Spouting
- ▶ Cladding
- ▶ Maintenance & re screws

PLUMBER

Russell CHOAT
GAS & Plumbing

Whangamata

**FOR ALL YOUR GAS-FITTING, PLUMBING,
DRAINAGE & ROOFING REQUIREMENTS**

Registered craftsman & member
of Master Plumbers

M. 0274 714 869 E. office@choatsplumbing.co.nz

ELECTRICIAN / DOG GROOMER

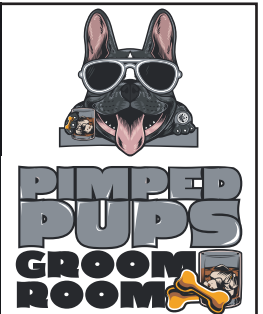
Rusty Sparks

EVERYTHING
ELECTRICAL

Residential, Commercial,
Data, Alarms

021 800 017

admin@rustysparks.nz



021 850 017
WHANGAMATA

WINDSCREEN REPAIRS

secureglass | windscreen repairs

MONDAYS:
RSA Carpark
Whangamata

TUESDAYS:
Fresh Choice
Carpark
Waihi

André Gillbanks
Phone 021 617 664

Chip Repairs
Windscreen Replacements
Insurance Claims Arranged

ARBORIST & FIREWOOD

SHORT BACK 'N' SIDES LTD

Arboricultural Contractors

TREE PROBLEMS?

Dismantle, pruning, removal, stump grinding. BIG or SMALL – we do them ALL!

0274 390 367

www.shortbacknsides.co.nz

FIREWOOD

Available all year round. Smoking chunks or dust, kindling, bagged wood. Delivery available or pick up on Fridays from 15 Dean Cres, Waihi. Gold Card discounts. Also 100s of native and exotic milled slab timber, garden mulch, smoking wood.

0274 390 367 or our firewood hotline 022 043 1862



Use Only the Best Services in our Community! Use Locals... For Locals... Support Locals!

BUILDER



RESIDENTIAL SERVICES
LBP Builder / Renovation Specialist
07 865 6555 / 027 238 1659
skfrs@xtra.co.nz

BINS

Skip Bins, Wheelie Bins, Front Load Bins
Contact us today! *We can help!*



0800 4 MY BIN - www.smartbins.co.nz
Proudly 100% Kiwi owned

BOARDING KENNEL / CATTERY



SPOT X
BOARDING KENNELS AND CATTERY

Quality care and facilities in a rural setting
Office hours: 9am-12 noon and 3-5pm daily
INSPECTION WELCOME
Ph 07 865 8242 or 027 624 3890
Annette Gillatt
4km south of Whangamata on the main road

DRIVING LESSONS



Helping young people to drive safely and intelligently.

Thames Driver Training
Book online at thamesdrivertraining.co.nz
Gavin Buchanan - Thames Driver Training
027 268 6381

REFRIGERATION & AIR CON

TIDELINE REFRIGERATION
WHANGAMATA

- * HEAT PUMPS
- * REFRIGERATION
- * AIR CONDITIONING
- * VENTILATION

SERVICING IN THE COROMANDEL AREA
0272121994 - 0277251820
TIDELINEREFRIGERATION@GMAIL.COM
WWW.TIDELINEREFRIGERATION.COM

ARBORIST



TREE TOPS ARBORIST

- Professional experienced and insured arborist
- All tree work including removal / pruning
- Hedge trimming and property maintenance
- Quality firewood and smoker wood

Heath van Leeuwen 0210 838 9922
email Heathsvan@gmail.com

TREE SPECIALIST



- Tree felling & pruning
- Hedge trimming
- Stump grinding
- Fully insured
- Qualified arborist

TREECARE WHANGAMATA LTD
Contact Ben 021 827 355
trecarewhangamata@gmail.com

LAWYERS

USSHER LAWYERS
- SINCE 2007 -

We can help with all of your general legal needs

- Conveyancing if you are buying or selling property
- Sale and purchase of business assets • Commercial leasing
- Relationship property • Trusts • Wills • Enduring powers of attorney

www.ussherlawyers.co.nz | Phone 07 865 8824
We've moved - now at 123 Lindsay Rd, Whangamata

WARDROBES



WD WARDROBES DIRECT

Steve Parkinson
Central, East & South
021 0733 100
steve@wardrobesdirect.co.nz

ALSO SERVICING WHANGAMATA
www.wardrobesdirect.co.nz

Showroom and office:
175 Marua Rd
Mt Wellington

LAUNDRY

WHANGA LAUNDROMAT



The only locally owned & operated laundromat in town!
OPEN 24 HOURS - 7 DAYS A WEEK
CASEMENT RD, WHANGAMATA (OPPOSITE WAITOMO FUEL)

SCAFFOLDING



- Mobile scaffolding
- Roof edge protection
- Construction scaffold

Servicing Whangamata and surrounding areas

Please ring 022 076 0160 or
email whangamatascaffolding@gmail.com
102 Lindsay Road, Whangamata Est 2014

TYRE & BATTERY SERVICES



WHANGAMATA TYRE & BATTERY

KUMHOTYRES 7

Car tyres / Wheel alignment
4WD tyres / Tyre repair
Wheel balance
Small implement tyres
Batteries - car & marine

Phone Simon 865 7698

CHALLENGE Cnr Port & Ocean Rd, Whangamata
www.challenge.net.nz

WINDOW & DOOR SERVICES



WHANGAMATA WINDOW & DOOR SERVICES

Bryce Hall
M. 027 282 2057
Ph. 865 9714

Reglaze // Repairs // Maintenance
Retro Fit Double Glaze

whangamatawindowdoorservices@xtra.co.nz

HOME SERVICES



YourLocal
NZ's Trusted Home Services

Avi@yourlocal.nz - www.yourlocal.nz - 022 534 5478

We specialise in

- Exterior house wash, windows, driveways, patios, decks, fences & roofs - Commercial, residential, rural, new builds & painters prep - Pests treatment (fumigation)
- Rodents & wasps - Chimney sweeping - Roof treatments

BUSINESS FRANCHISE FOR SALE

We cover Coromandel, Thames, Waihi, Waihi Beach, Whitianga, Whangamata

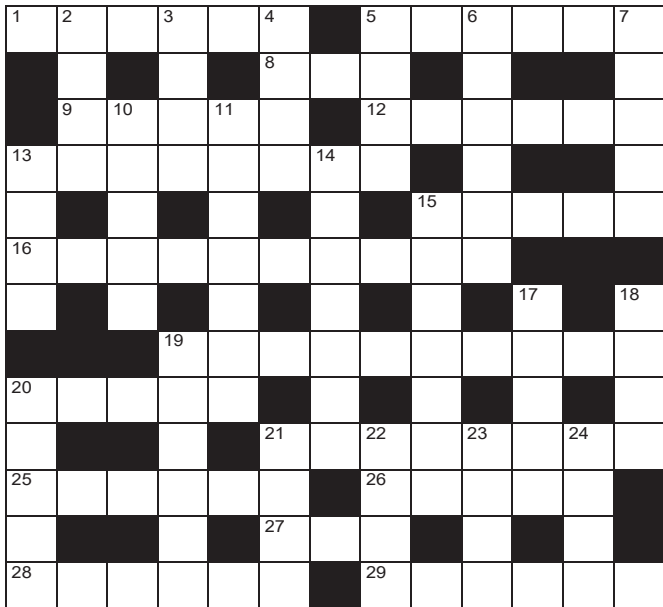
CLOTHING

YUKEYS
3620

Clothing Alterations and Repairs
LADIES - MEN - CHILDRENSWEAR

Open Tuesday to Friday 8.30am to 1.30pm
Saturday 9am to 12pm
105 Aickin Road (just off Port Road)
Whangamata
M. 021 0289 3968

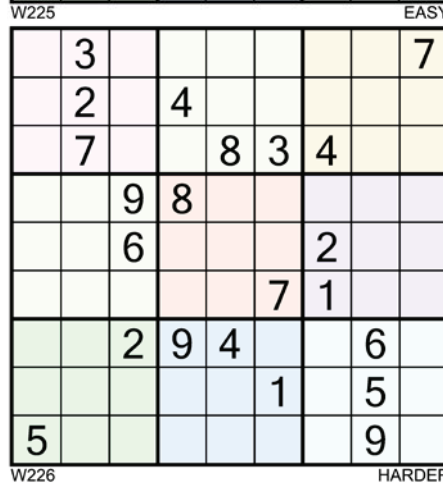
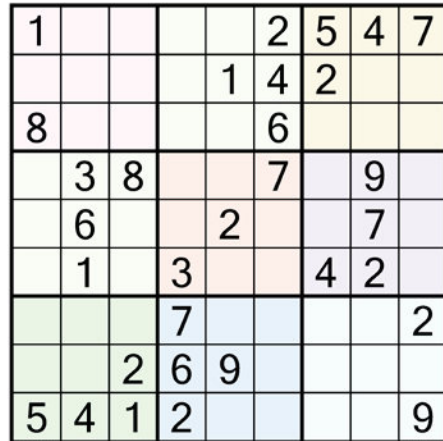
QUICK CROSSWORD



- Across**
- Soft felt hat (6)
 - Disguised (6)
 - Charge (3)
 - Up and about (5)
 - Atone (6)
 - Install monarch (8)
 - Inundate (5)
 - Harshly (10)
 - Inexorable (10)
 - Liability (5)
 - Piston chamber (8)
 - Paid male escort (6)
 - Farewell (Fr) (5)
 - Spoil (3)
 - Excellent (6)
 - Supernatural being (6)
- Down**
- Style, flair (Fr) (4)
 - Solemn promise (4)
 - Bushy hairdo (4)
 - Mother (Fr) (4)
 - Provide (6)
 - Old-fashioned (5)
 - Strict or severe (5)
 - Annoying (7)
 - Test (4)
 - A thing new and interesting (7)
 - Lacking elasticity (7)
 - Tolerate (5)
 - Rip (4)
 - Put upon (6)
 - False (5)
 - Search thoroughly (4)
 - Cooking fat (4)
 - Pleasant (4)
 - Currency (4)

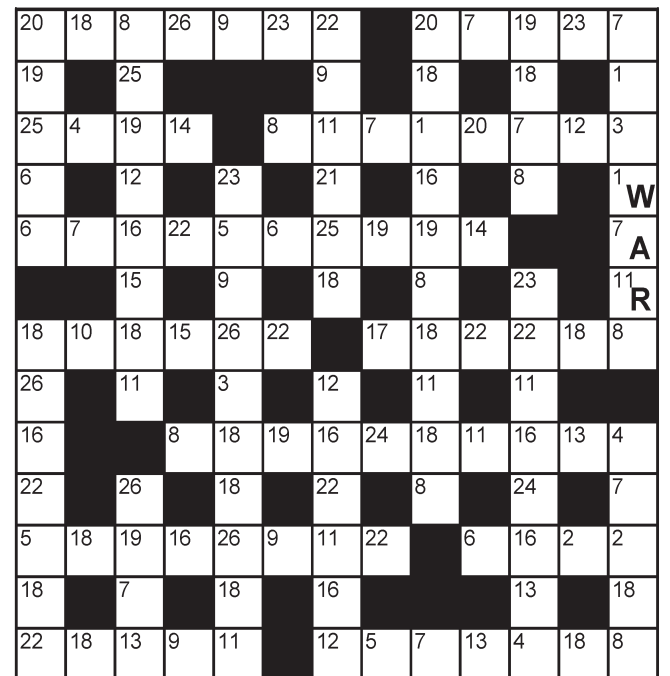
SUDOKU

Fill the grid so every row, column and 3x3 box contains the numbers 1-9



DECODER

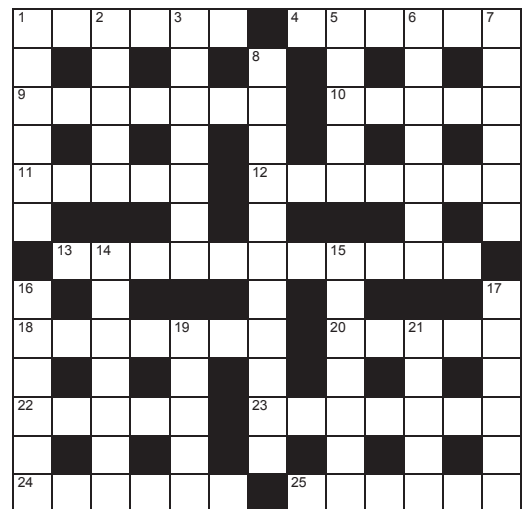
Each number below represents a different letter. Find the correct letter for each number by working out the word from the letters given. To keep track, cross the letters off on the grid below.



A	B	C	D	E	F	G	H	I	J	K	L	M	N	O	P	Q	R	S	T	U	V	W	X	Y	Z
1	2	3	4	5	6	7	8	9	10	11	12	13													
W						A					R														
14	15	16	17	18	19	20	21	22	23	24	25	26													

CRYPTIC CROSSWORD

- Across**
- Divide the cult in two? (6)
 - Allow to be lean (6)
 - Gets Tau a rat maybe or a lizard from NZ (7)
 - Mr Spearman? (5)
 - Diamond I'm out to get as extra (3,2)
 - Managing the marathon (7)
 - Where to look for chickens? (6,5)
 - Shin, leg & tongue (7)
 - What's in the ship "Escargot" (5)
 - Had input into 18's development to a degree (5)
 - Clive? He drove around in this (7)
 - The most senior of the Bakersfield establishment (6)
 - Pictures of playground equipment (6)
- Down**
- Had nothing to do with robbin' – or did he as we speak? (6)
 - Draws back the turf (5)
 - The char, Nellie, worked in the house (7)
 - Material used in any longline (5)
 - Drag out fingerboard for burning (7)
 - Menagerie Ian will come out of? (6)
 - Miss by a whisker? (6,5)
 - Got into gear but otherwise in use (7)
 - It's served at the local? Oh! (7)



- Hand grenade cad ejected inside ten years (6)
- Nonbelievers, Bernie goes out for books (6)
- Inventive designs encouraged initially as thought process (5)
- Ran cadre possibly (5)

SOLUTIONS

SUDOKU

W225

5	6	1	7	2	8	3	8	3	9	4
4	9	7	3	6	1	8	5	2		
3	8	2	9	4	5	7	6	1		
2	5	3	6	9	7	1	4	8		
8	1	6	5	3	4	2	7	9		
7	4	9	8	1	2	6	3	5		
9	7	5	1	8	3	4	2	6		
6	2	8	4	7	9	5	1	3		
1	3	4	2	5	6	9	8	7		

W226

1	3								7
2		4							
7			8	3	4				
		9	8						
		6				2			
						7	1		
		2	9	4				6	
						1		5	
5									9

CROSSWORD

Across: 1. Fedora, 2. Euro, 3. Lard, 4. Nice, 5. Bogus, 6. Comp, 7. Tear, 8. Impose, 9. Flaccid, 10. Abide, 11. Exam, 12. Novelty, 13. Stem, 14. Irksome, 15. Supply, 16. Dated, 17. Afro, 18. Mere, 19. Superb, 20. Daemon, 21. Adieu, 22. Mar, 23. Cylinder, 24. Gigolo, 25. Impacable, 26. Blame, 27. Abrasively, 28. Enthroned, 29. Flood, 30. Astir, 31. Repent, 32. Masked, 33. Fee, 34. Fedora.

Down: 1. Eian, 2. Oath, 3. Oath, 4. Engaged, 5. Narrow shave, 6. Sward, 7. Charnel, 8. Nylon, 9. Add on, 10. Running, 11. Yellow pages, 12. English, 13. Bisection, 14. Enable, 15. Tuatara, 16. Lance, 17. Decade, 18. Decade, 19. Ideas, 20. Alcohol, 21. Raced.

CRYPTIC

Across: 1. Batmen, 2. Sward, 3. Charnel, 4. Nylon, 5. Add on, 6. Running, 7. Vehicle, 8. Eldes, 9. Slides, 10. Impacable, 11. Running, 12. Yellow pages, 13. English, 14. Add on, 15. Running, 16. Vehicle, 17. Eldes, 18. Slides, 19. Impacable, 20. Blame, 21. Abrasively, 22. Enthroned, 23. Flood, 24. Astir, 25. Repent, 26. Masked, 27. Fee, 28. Fedora.

Down: 1. Batmen, 2. Sward, 3. Charnel, 4. Nylon, 5. Add on, 6. Running, 7. Vehicle, 8. Eldes, 9. Slides, 10. Impacable, 11. Running, 12. Yellow pages, 13. English, 14. Add on, 15. Running, 16. Vehicle, 17. Eldes, 18. Slides, 19. Impacable, 20. Blame, 21. Abrasively, 22. Enthroned, 23. Flood, 24. Astir, 25. Repent, 26. Masked, 27. Fee, 28. Fedora.

DECODER

W	Z	K	G	H	F	A	D	O	X	R	C	N
Y	M	L	J	E	B	T	O	T	S	V	U	P
Q	A	S	Z	T	O	T	S	V	U	P		

WHANGAMATA SPORTS BAR

LIVE ENTERTAINMENT!

DENNIS MARSH
BRENDAN DUGAN

TWO BENNY AWARD WINNERS

SUNDAY, 20 OCT, 4PM

Tickets \$20 available at the venue or phone 865 6915

LIVE BAND
LOOSE CHANGE

Labour Weekend
SATURDAY, 26 OCT, FROM 8.30PM – free entry