

PARADISE COAST

Whangamatā NEWS

ISSUE 130 - 22 NOVEMBER, 2024



FREE COPY
PLEASE TAKE ONE!

AB Sevens Bind Team Cultures P12 & 13

Photos by Mark James



FOLLOW US

BY LOCALS, FOR LOCALS, ABOUT LOCALS.

WE WELCOME YOUR CONTRIBUTIONS!

EMAIL WHANGAMATANEWS@GMAIL.COM • FACEBOOK @WHANGANNEWS

Taken home by bach owners and visitors to everywhere

SEE ALL OUR EDITIONS LIVE AT WWW.WHANGAMATANEWS.NZ

EDITORIAL & MEDIA SALES:
JENNIE BLACK - 021 0232 1661

INDEPENDENTLY OWNED

DELIVERED TO WAIHI, WHIRITOA, WHANGAMATĀ, ONEMANA, HIKUAI, PAUANUI & TAIRUA



Time for action

George Williams would like to see a reduction in the use of inflammatory language around climate change, while at the same time attacking the science that much of this climate change is due to excessive use of fossil fuels.

Many young people can easily see through much of the climate denial playbook, and this includes the idea that because some people have exaggerated the extent of sea level rises then we can ignore the thousands of studies that climate scientists publish every year. Bodies

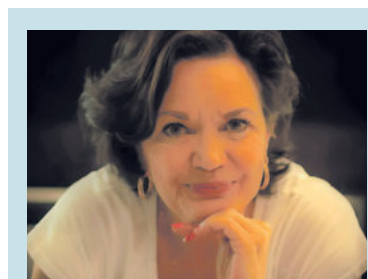
such as the National Academies of Sciences continue to warn that global warming will lead to more moisture in the atmosphere and rain events such as we saw in Spain recently will happen increasingly frequently. Young people are anxious because they can see that not enough is being done to protect the planet and they will be the generation that suffers the consequences. Perhaps it is time to do something about it rather than worrying about inflammatory language.

John Lipscombe

Welcome to the second November 2024 edition of Whangamatā News

– a magazine By Locals, For Locals, About Locals

Whangamatā News		www.WhangamataNews.nz	
EDITOR & SALES DIRECTOR Jennie Black Phone 021 0232 1661 WhangamataNews@gmail.com	PUBLISHING Printed by Beacon Media Group. Published by Whangamatā News 2021 Ltd	All content featured in Whangamatā NEWS Limited is subject to copyright in its entirety and may not be reproduced in any form without permission from the Publisher. Any material supplied for publication is at the submitter's risk. All information is believed to be true by the Publisher at the time of printing. Views expressed in Whangamatā NEWS Limited are not necessarily those of the Publisher.	
SPORTS REPORTER & PHOTOGRAPHER Mark James Phone 021 668 469			
ART DIRECTOR Anna Gledhill WhangamataNewsArt@gmail.com			



For advertising queries contact Jennie Black

Editorial/Sales Director
Phone 021 0232 1661
jennieablack@gmail.com

We welcome your letters, articles, photos, news tips and advertising enquiries

- We ask that letters and articles be no more than 250 words, although exceptions can be made.
- Photos should be high resolution and in focus.
- Include your name, no noms de plumes.

For editorial or photographic matters, phone Jennie on 021 0232 1661 or email WhangamataNews@gmail.com

HON SCOTT SIMPSON
MP for Coromandel

Hauraki Gulf/ Tīkapa Moana Marine Protection Bill

The year is coming to an end, but the coalition Government is still busy working to progress our final policies for 2024.

Locals will be particularly interested in the Hauraki Gulf/Tīkapa Moana Marine Protection Bill, which Conservation Minister Tama Potaka confirmed that Cabinet has agreed to pass.

The Bill sees the creation of 12 new high protection areas, 5 new seafloor protection areas and two extensions to existing marine reserves in the Hauraki Gulf.

The Hauraki Gulf is a natural and economic treasure for our region. It's enjoyed not only by locals, but also people who come here to spend a day out fishing and those

who consume its produce. A recent assessment by the NZ Institute of Economic Research put the economic value of the Gulf at \$100 billion.

Unfortunately, the health of the Gulf has declined consistently for decades and more protections are needed to ensure the right tools are in place to help revitalise it now and into the future.

In my view, it strikes the right balance between protecting the Gulf and leaving plenty of space for boaties to enjoy a day out fishing. It's a huge environmental achievement which has been decades in the making.

– Authorised by Scott Simpson MP,
614 Pollen St, Thames

Scott Simpson
MP for Coromandel

Contact me anytime
0800 550 330 • scottsimpson.co.nz
mpcoromandel@parliament.govt.nz
f scottsimpsonmp

National

Authorised by Scott Simpson, Parliament Buildings, Wellington.

For your design needs

- Adverts
- Signs
- Posters
- Flyers

- Magazines
- Business cards
- Gift vouchers and more...

Contact Anna Gledhill
aljgledhill@gmail.com or 021 653 148

Designer for Whangamatā News & the Repco Beach Hop 24 programme

Aerobics Vortex
4 colours available
~~\$229~~ \$149

Made in Portugal

Tango's

Whitianga 07 866 4465 | Whangamatā 07 865 8088
WWW.TANGOSSHOES.NZ

AfterPay & Zip welcome

"Take life and just get on with it!"

Great words from our favourite Whangamatā lady of poise and longevity, Hilda Simmons.

Her close family invited Whangamatā News to the official cake cutting at 107 years at Moana House to celebrate another huge milestone for Hilda.

She was born in Morrinsville on November 15, 1917. A special day indeed. Her parents moved to Whangamatā in 1948, buying a small home, initially, on Ocean Road for just 45 pounds!

Hilda had the best of care living with

her son, John, and daughter-in-law, Marie, in Ocean Road for 8 years, but the past 9 months in Moana House.

She is as bright as a button, and never fails to amaze me how her recall is sharp and her brain crisp. John tells us that Hilda's Mum lived to 102 years and her grandmother 100 years, and neither elderly ladies took any medications.

Hilda's husband was in the Bomber Command in WWII and lost his hearing through the noise of the aeroplanes and was sent home early, where the pair married. There

was no job for him, consequently he joined the forestry north of Whangamatā because he was deaf.

Last year she told Whangamatā News "I don't want to live to 107 years, it's much too old!"

Well congratulations, Hilda, we always look forward to your birthday and the cake was just so delicious...

- Jennie Black,
photos by Mark James

THANK YOU

I would like to congratulate the staff at Moana House for the magnificent effort and kindness given to my dear friend Hilda Simmons on her 107th birthday last week.

It was celebrated with wonderful enthusiasm including the staff group with dance and traditional food you provided.

Thank you for your love and care of a very special lady.

- Jan Emerson





**Why be fearful of Friday 13th?
We've got it covered...**

BOLD NOT BLACK

Shopping Promotion

Support our local businesses in Whangamatā between **Friday, 15 November** and **Friday, 13 December, 2024** and you could **win cash!**

Simple as – each time you shop, scan the QR code and go into the draw.

WIN

1st Prize:
\$500

2nd Prize:
\$250

3rd Prize:
\$150



*The small print...
proof of purchase will be required to collect the prizes.*



Tyre specials

CHALLENGE Whangamata
www.challenge.net.nz
Cnr Port Rd & Ocean Rd, Whangamata

NEUTON BATTERY SPECIALS



Automotive..... from \$155

Commercial ... from \$229

Marine..... from \$250



**New tyres,
repairs and
alignments.**

**Hundreds of
tyres in stock.**



PHONE SIMON 07 865 7698



Car tyres / Wheel alignment

4WD tyres / Tyre repair

Wheel balance / Small implement tyres

Batteries – car & marine

Thank you from Harbour Care



A big shout-out to our sponsors and supporters for the help and support given to this year's project.

The community response was exceptional and the volunteers on the day managed to collect over 350kg+ of trash over a period of two hours.

The fact that this level of trash even exists within our harbour and estuaries is of real concern to the community, we will therefore continue on with this annual project in the hope of encouraging

more public awareness of the issue.

Your acknowledgement of Whangamata Harbour Care is much appreciated, it goes a long way to supporting projects such as Spring Clean, Predator Control, Backyard Trapping, Harbourside Restoration, Conservation and Education.

Once again thank you for your kind support.

- Kerry Gibb,
Whangamata Harbourcare Inc

Garden club outing

The Whangamata garden club recently journeyed to Tauranga for their annual trip. Tauranga? one would say. We all know Tauranga. But do you?

The group of 29 ladies had a wonderful week viewing beautiful gardens and garden art, enjoying delicious dinners and going to places they had never heard of.

Highlights of the week were High Tea at The Elms, Melbourne cup

night at Rain Bar & Restaurant in Papamoa and a 'White and Gold' night at the White House in Te Puna.

Much to our delight one of our 'girls', Jill Stabler, won best dressed at Rain And at the White House everyone entered into the spirit of the night and three ladies excelled themselves taking out the titles.

Best dressed were Kay Savage and Evonne Bartlett with Mani Murphy runner-up.





Baker Glass & Glazing Ltd

"Craftsmanship with care"

- Glass Repairs
- Shower Glass
- Splashbacks

- Balustrades
- Retro-fit Double Glazing
- Insurance Quotes

Member AMN
Masterglaziers network
Proudly supported
by Metro Glass




Contact 021 514 497 | glass@bakerjoinery.co.nz



FLOORINGXTRA.CO.NZ

FLOORING TO SUIT YOUR STYLE

CARPET • VINYL • TIMBER • LAMINATE • RUGS

Phone or email us! We're measuring & laying! View samples instore!



Whangamata | 636 Port Road | 07 865 8562 | whangamata@flooringxtra.co.nz




Business After 5

Whangamata Rugby Club, Aickin Road Sports Centre

Thursday 28 November 2024



Celebrating Murray Cleland's illustrious career in real estate

Members Minutes as usual, light snacks provided and the bar will be open




Proudly sponsored by [Harcourts Whangamata](https://www.harcourts.co.nz)

It's finish lines – not finish times

Whangamatā News caught up with two incredible Whangamatā local women who have just returned from completing the New York Marathon held on 3 November.

An incredible feat indeed, a whopping 42.2km journey and, with competitors numbering more than 55,500 people of all ages and abilities, it is the biggest marathon in the world.

Vicar Rosie Dell and new friend

Alison Shannon, had previously completed the Rotorua Blue Lakes a year ago, Hamilton Gardens and the Whangamatā Half Marathon.

Rosie had been training with a group called 'slow coach', they were taking a group to the New York marathon and Rosie thought "I'm never going to get that opportunity again, its fallen into my lap, so I said yes!"

Alison also completed the Rotorua

Blue Lakes 13.6km and she hadn't done any exercise of this scale and said "I thought what a fantastic opportunity to go and its a great goal for me, and a chance to travel to a place like New York."

I asked the pair, did they feel safe "Yes, there were police every intersection, snipers, helicopters and police even into the dark of night",

Rosie went on to reiterate "it's about inclusivity not your finish time, its about taking part, we want to encourage people to get involved, this isn't an elitist thing, everyone can have a go, there is a big movement worldwide for that ethos".

They came home with marathoner shirts, finisher jackets and their team slow coach sweatshirts. They crossed six boroughs, Staten Island, Brooklyn, Queens, The Bronx, Harlem and Manhattan. They told us how you see the different character of each neighbourhood, crowds were deep and shouting support and quite deafening.

The ladies were in a section starting a bit later at 11.30am, which allowed hand cyclists and the Achilles Programme groups (who guide people with visual impairment with tethers), they finished at 8.15 pm, quite cold first thing and then at its Autumn warmest 21° Celsius, and dropped mid-afternoon. There were



lots of water stations, Gatorade and, yes, champagne afterwards!

Rosie said "we knew we could do it physically with our long training, but it takes a lot of mental determination to keep going."

Whangamatā News has a huge admiration for them, the tenacity, sweat, strength and the determination to succeed in an event bursting with inclusivity.

- Jennie Black



Join Us

AT THE WHANGAMATA CLUB

NORTHERN TOUR

ITALY VS ALL BLACKS

SUNDAY 24 NOV
KICK OFF 09:10AM

DOORS OPEN 8AM
BREAKFAST AVAILABLE

LIVE ON THE BIG SCREEN

Quiz Night

at the Whangamata Club

Quiz, Laugh, Win – Repeat
Every Fortnight at the Whanga Club!

6PM THURSDAY

Happy Hour from 5pm – 8pm
Special Quiz Platters
Weekly Prizes and Giveaways
'Spin the Wheel'

Thursday 28 November

Whangamata Club
Presents

Passion

SATURDAY 30 NOVEMBER
7PM

OPEN
DAILY FROM
11AM

BISTRO

Monday – Friday from 3pm
Saturday & Sunday from 12pm

DINNER MENU

From 5pm daily

RESTAURANT

Friday to Sunday from 5:30pm

404 PORT ROAD
FACEBOOK.COM/THEWHANGACLUB
WWW.WHANGAMATACLUB.CO.NZ
P. 07 865 8705

WAS Prize Giving – a celebration

It was a night of celebration, reflection, and recognition at the annual Whangamata Area School year 11-13 prize giving.

The achievements of the most senior students in the school were celebrated in a range of areas from

academic progress and achievement to sporting and cultural success.

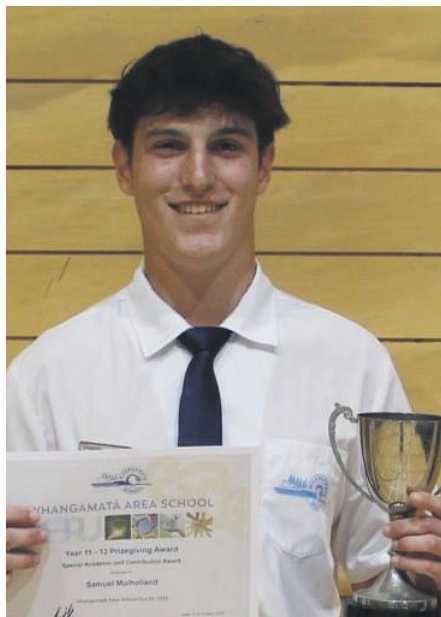
There were emotional addresses from our 2024 head students Emily Brickwood and Hunter Ussher who both spoke of the uniqueness of an area school education, and the

range of opportunities they have been able to enjoy.

While many students were awarded for their efforts throughout the year, the supreme award for the evening went to Samuel Mulholland, who was named Dux for 2024. The year

13s were farewelled with a stirring haka to finish the evening.

We wish all our leavers every success as they move onto to the next chapter of their lives.



Samuel Mulholland, 2024 Dux.

The major award winners on the night were:

2024 Dux – Eastern Coromandel Community Services Trust Scholarship: Samuel Mulholland

Academic Excellence in Year 12: Lexi Meyer

Academic Excellence in Year 11: Harrison Biddle

Most Improved NCEA Student: Alana Littlewood

Blues Sports Award: Harrison Biddle in recognition of selection in the New Zealand Junior Surfing Team

Dufty Cup for the Most Outstanding Sporting Achievements of the Year: Harrison Biddle

Casey Cup for Overall Sportsperson of the Year: Hunter Ussher

Dianne Bluett Memorial Trophy for Determination, Motivation and Balance: Emily Brickwood

Murray Family Tall Totara Trophy for Conscience, Competence and Compassion: Aja Allen

Drewery Wray Gordon Cup for Significant Contribution to the Whangamata Area School Community: Charlotte Lima

University Scholarship recipients: Nathan Azurlay University of Otago; Emily Brickwood University of Otago; Jake Flannagan University of Waikato; Ben Harriss University of Waikato.



Lexi Meyer, Academic Excellence in Year 12.



Harrison Biddle, Academic Excellence, Blues Sports Award and Dufty Cup.



Hunter Ussher, Casey Cup.



Aja Allen, Murray Family Tall Totara Trophy.



Charlotte Lima, Drewery Wray Gordon Cup.

December 5th

INTERNATIONAL

Volunteer

DAY

GREETINGS-DAY.COM

International Volunteer Day takes place every year on 5 December.

It's an opportunity to celebrate and thank people all around the world who dedicate their precious time and efforts to voluntary service. It's about celebrating our more than 16 million volunteers engaging in local humanitarian action for global good.

Whangamatā News believes in the 'power of kindness' and we sincerely thank all our volunteers in Whangamatā and in our piece of paradise for everything they do!

Whangamatā NEWS

Money, money, money down the drain

We remain of the view that council is acting outside its legislative authority and must immediately repeal the 3500 flood warning letters.

During the week the council provided us yet another expert report. Our reading of this report written by HAL is the purpose of the modelling is to be used as a tool to show council how various stormwater design options could mitigate surface flooding. HAL stated the flood levels are not accurate or reliable but are useful to test changes to pipes and overland flow paths. The HAL report references at least another dozen reports. At the time of print we are still waiting for these.

Since Gabrielle last year council has delivered an unfinished Williamson Pond with sludge and weeds now growing, a false claim experts stated it had to be a wetland, ongoing unravelling of dozens of expert reports and now 3500 letters in our mailboxes wrongly devaluing our properties.

Council is not honouring our significance and engagement policy or its LGOIMA obligations. Council withheld the HAL report for over a year saying it was 'too contentious for ratepayers to see'. Now we find out the HAL report was peer reviewed 4 years ago before Hale and Gabrielle. People attending



From Left Rob Boston and Ian Holyoake

councils pop in sessions were told pipes won't fix the stormwater problems.

Paralysis by reports. Money down the drain. This makes our significance and engagement policy even more important. As does transparency. What we know is council has allowed more development than our stormwater system can manage. By failing to follow the Opus recommendations

in 2003 we now have 20 years of deficiencies in our pipes that apparently can't be fixed.

We don't accept council's position. It is not appropriate to use a model of a 1%AEP event and claim it can't be solved when the building code only requires councils to manage a 2%AEP. If our stormwater systems can't manage a 2%AEP, we need to know why. Development should not have been approved

unless the reserve contributions were applied to improving the stormwater systems to cope with the extra runoff generated by each development.

Stormwater improvements must be targeted and must mitigate flooding of properties with known flood risk. Council claimed it did not possess the addresses that flooded in the Tasman Tempest in 2017, yet the HAL report has identified 71 of them. These properties will already have warnings on LIM's as council has proof of flooding. Why are they still waiting for improvement solutions and why hasn't the modelling shown us how to solve the flooding? Why should another 3430 properties be tagged?

Its likely ratepayers could end up as the insurer in the next flood. Why would insurers pay out when council hasn't made the required improvements.

It is difficult for us to comprehend why so much money is being poured down the drain on 4 years of modelling when council already knows which properties flood.

We have set the public meeting dates for 2pm 15 December and 19 January, venue to be advised. Bring your story when you pick up your maps.

- Whangamata Ratepayers Stormwater Action Group

THE ONLY WEBER® SPECIALIST DEALER ON THE COROMANDEL PENINSULA



100% HOME

WHANGAMATĀ

605 PORT RD., WHANGAMATA, WAIKATO. PHONE 07 865 9458. *TERMS & CONDITIONS APPLY



Groms Day

Whangamata Board Riders added another junior initiative on the 10th of November with the first junior club event being held for several years. Groms from up and down the Coromandel Peninsula took part with over 40 participants enjoying the day. The event used a round-robin format to encourage having fun with most participants being first timers.

There were some fantastic performances throughout the day with perfect sized waves for the youngsters.

The event is a precursor to the Club Champs which is expected to take place in the next month subject to swell. The event also adds to the Junior Surfing programme which commenced last week and was well attended by a new crop of youngsters eager to give surfing a go.

Thanks so much to all the groms and families that made the day possible as well as the volunteers for helping out all day.

- Ben Kennings



RESULTS	
Under 14 Girls	Under 14 Boys
1st Bella Biddle	1st Lochie Moffat
2nd Vivi Myer	2nd = Zak Woodhouse
3rd Mila Kivell	2nd = Jett Kennings
	3rd Reed Parry
Under 12 Girls	Under 12 Boys
1st Charlotte Oswald	1st Dacey Woodyard
2nd Megan Luke	2nd Sando Millar Dal Bosco
3rd Raya Moffat	3rd Rico Falconer
4th Jessie Sullivan	4th Jay Parry
Under 10 Girls	Under 10 Boys
1st = Harper Luke	1st Fergus Woodyard
1st = Isla Keogh	2nd George Woodyard
2nd Indiaca Caple	3rd Ace Kennings
4th Molly McKillop	4th Jay Sullivan



\$1 WINGS WEDNESDAY

from 4:30pm until sold out

FULL SIZE BUFFALO WINGS!!

\$1 PER WING!!

Dine in only

conditions apply

Pasta Thursday

ANY HAUS PASTA & EITHER A PINT OF TAP BEER OR GLASS OF HAUS WINE

Only \$25

Conditions apply

FRIDAY SHOUT

\$10 PINTS
\$10 PIZZAS
\$10 HOUSE WINE
\$10 COCKTAIL

Every Friday 2:30pm - 5:30pm

Pizzas are available for dine in or takeaway

SHELLFISH SATURDAY

Grab 1kg of NZ greenlipped mussels in a Thai green curry sauce & a pint of tap beer or glass of house wine

ONLY \$25

conditions apply

GIVE A SCHNIT SUNDAY

Grab a chicken OR pork schnitzel served with fries, slaw & gravy matched with a pint of tap beer OR glass of haus wine

ONLY \$20

conditions apply

Follow us on Facebook & Instagram to keep up to date with all our events & deals @crafthauswhanga

CRAFT HAUS
Gastropub Est. 2022

711 Port Road, Whangamata
@crafthauswhanga - www.crafthauswhanga.co.nz
07 865 6300

New markets coming to Whangamata

Founded over 10 years ago, The Little Big Markets have become a valued fixture in Mount Maunganui, creating a vibrant hub that brings together local businesses, artisans, and families in a vibrant open-air setting.

Known for our curated selection of quality vendors, live music, and bustling atmosphere, the markets have grown into a staple for both locals and tourists. Over the years, we've built strong relationships with vendors who travel from across the region to join us in the Mount.

Recognising the value our markets bring to local businesses, tourism, and the social fabric of a community,

we saw an opportunity to expand into Whangamatā. Our goal is to bring that same sense of connection to Whangamatā, providing a space where locals and visitors can gather, explore unique products, and soak up the coastal vibe.

By hosting a market here, we aim to support local businesses, showcase talented artisans, and create a welcoming gathering place that strengthens the community spirit and celebrates the unique characteristics of Whangamatā.

Our next Whangamatā market is on Sunday, 24 November, more dates can be found on littlebigmarkets.co.nz.



Jowett Cars visiting Whangamata



70-year-old cars will be spotted around Whangamatā on Saturday 23rd and Sunday 24 November, when the Jowett Car Club holds their weekend away.

Jowett Cars were made in Bradford, England in 1910, over one hundred years ago and continued until 1953. The vehicles that will be remembered most in New Zealand are the Javelin saloon, Jupiter sports car and the little two-cylinder Bradford trucks and vans, all of the 48-53 era. All models had the trademark horizontally opposed engine.

The Jowett popularity was most prominent in 1951 and cars attending this weekend are

from this era and are over 70 years old.

The weekend will consist of a visit to the attractions in Paeroa and Waihi, a Dinner, be on display at the Sunday market and a visit to a local car collection before heading home on Sunday afternoon.

Cars can be seen at the Blake Court Motel on Saturday 4-5pm or at the Sunday Market, Williamson Park 9.30 to 10.30am

For further information about Jowett cars go to the Jowett Car Club website: jowettnz.net or call 021 827 148 or 021 056 1733.

Blackout Sale.

20-60% off selected Sleepyhead.

Now \$2,959

60% off.

Swisstek Select Queen Bed



From \$3,531

60% off.

Sanctuary Midnight Queen Mattress



Now \$4,409

55% off.

Swisstek Elite Queen Bed



Whangamata

419 Port Road
07 865 9027

Waihi

94 Seddon Street
07 863 8787

Locally owned & operated

Free local delivery

We will take away your old bed

NEW ZEALAND MADE

*Offer valid to 03.12.24 or while stocks last. Discount offers apply to selected beds and bedding only, prices as marked. Offers exclude Everyday Dream prices, run outs, clearance stock (unless otherwise stated) and not to be used in conjunction with any other offer. See in-store for details. We reserve the right to correct errors and misprints and to change product specifications. All products are advertised in good faith and will be available, except in circumstances beyond our control. Product ranges vary between stores and some products are available in selected stores only.

Mayors taskforce for jobs



Meat at the Beach emerged with a Bronze Award at the 2024 Dunningham Sausage Competition for their 100% Pure Beef Sausages—a remarkable achievement with Tyrese (centre) mastering the award-winning sausage-making skills from Steve (right).

Mayor Len Salt met with employers last week in Whangamatā who have taken on young MTFJ job-seekers. Two of these have now begun apprenticeships, one as a butcher and one as a builder.

“Their dedication to providing mentorship and opportunity not only helps our job-seekers, but also enriches our wider community,” says Mayor Len. “Together, we’re building a future rooted in mutual support and shared success.”

MTFJ is a movement of mayors around Aotearoa who advocate

for a bottom-up approach to employment solutions to deliver the Community Employment Programme (CEP) along with broader initiatives. In particular, CEP is a nationwide partnership between Local Government New Zealand (LGNZ) and the Ministry of Social Development (MSD) that’s delivering great outcomes in our rural and provincial communities. It’s championed by mayors who are working together towards the vision of all young people 16-25 engaged in employment, education, or training in their communities.

Sea spurge warning

Keep an eye out on our beaches this summer for signs of the invasive weed sea spurge.

Infestations of the toxic species have been found in Northland and our Council wants to prevent its arrival here in the Coromandel

Sea spurge looks like a small shrub, usually up to half a metre tall.

Other features include:

- Multiple stems, often reddish at the base
- Distinctive, spiky, tightly packed blue-green leaves about 4-22mm long and 1-16mm wide
- Greenish flowers on the end of the stems

Sea spurge can quickly take over our dunes, push out our native

plants and destroy shorebird habitat. It is also toxic – the sap can burn skin and potentially cause temporary blindness.

The weed, believed to have arrived on ocean currents from Australia, is usually on dunes or among washed-up debris on beaches. If you come across it, do not handle it as it can spread seeds and the toxic sap can cause injury if the stems are broken or cut.

Instead, take photos of the site and plant, including close ups of the leaves and flowers, record your location using GPS or Google if possible and report your sighting to the Ministry of Primary Industry on 0800 80 99 66 or online at report.mpi.govt.nz/pest.

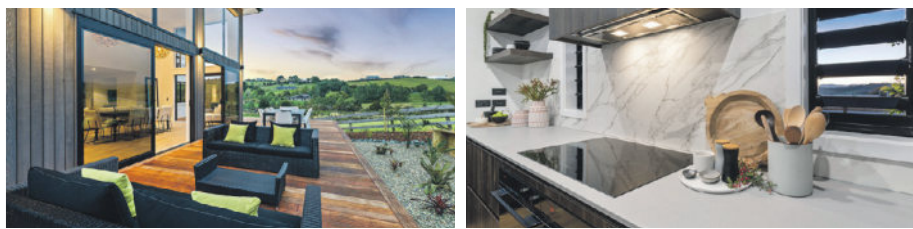


Whatever the site, we'll help you create the perfect home.

Jennian

HOMES

614 Port Rd, Whangamatā E: coromandel@jennian.co.nz P: 07 865 6767




Baker Joinery Ltd

"Craftsmanship with care"

- Kitchens
- Joinery
- Wardrobe Solutions
- Laundry
- Bathrooms
- Pre-Hung Doors

For top-notch craftsmanship & expertise in joinery & cabinetry
contact 07 863 8962 | info@bakerjoinery.co.nz
 Or pop into our Show Room 46 Johnston Street, Waihi

SHOW ROOM OPEN SATURDAYS




Whangamatā SERVICE CENTRE

Full Mechanical Repairs, Lubrications and Services, WOFs, Tyres, Tune ups, Batteries, Wheel alignments, Diagnostics.

Scan Tool.

AA Breakdown services
 First Assistance Breakdown services

P. 07 865 9435 • 201 Aickin Road, Whangamatā
 M. 027 608 5770 • E. wgmssc@extra.co.nz



fairview
 EXCEPTIONAL WINDOWS & DOORS

WHANGAMATĀ
 07 865 8919
www.fairviewwhangamata.nz

Love your view

Our Coromandel

News from Thames-Coromandel District Council



22 November 2024

Whangamatā stormwater project

Our drop-in information sessions for property owners to find out more about how our new stormwater flood modelling affects their section have finished. Thank you to all those who attended.

If you own a property in Whangamatā and received an information letter in mid-October but couldn't make our drop-in sessions, please get in touch to talk to a member of our team by putting in a Request For Service (RFS) either by:

Email – customer.services@tcdc.govt.nz

Online – tcdc.govt.nz/rfs

Phone – 07 868 0200

Our Council has modelled stormwater flooding in the township in order to understand where infrastructure work to alleviate the issue needs to be carried out.

To access the stormwater flood model maps, visit our website: tcdc.govt.nz/whangamatstormwater

Whangamatā Stormwater Flood Model Map

tcdc.govt.nz/whangamatstormwater

The flood maps can be reviewed to take into account any property-specific information. You can request a review of the flooding risk that has been identified on your property. Gather all your relevant property information, contact us by one of the means above, and we'll be in touch to review your situation.

Still have questions? Visit tcdc.govt.nz/whangamatstormwater

PORT ROAD TOILET UPGRADE

The public toilet facilities next to the Council offices on Port Road are due an upgrade. Whangamatā is becoming increasingly busy and in the peak periods there is a need for more public conveniences. The new facility will consist of four unisex pans, two accessible facilities (including one family facility) as well as a urinal room. The new toilets will be located in the same area as the existing ones but with a new and improved layout by the end of the financial year, June 2025.



WINNERS CROWNED IN HAURAKI COROMANDEL BUSINESS AWARDS

Local businesses did well in the business awards, with the Waterworks on The 309 Rd taking the supreme prize, while Whangamatā's EPL Construction and Dive Zone Whitianga were named joint winners of the Community Contribution Award.



Sheridan Fathers, Michelle Bathurst and Bruce Connell from EPL Construction.

Judges Mike Green, Sue Loder, and Ray Lewis said they were blown away by the passion, commitment, and drive shown by the finalists and how embedded each business was in the community.

Judges said EPL Construction demonstrated extraordinary commitment to community wellbeing, playing critical roles in events such as Cyclone Gabrielle and continuing to give a substantial amount of time, money, and supplies to core Whangamatā groups such as surf lifesaving, the rescue helicopter, rugby club, and the RSA. EPL also helped their community without hesitation by sharing knowledge to improve local systems, support schools, and help Council discussions to enhance infrastructure planning.

See more at tcdc.govt.nz/HCBA2024



Whangamatā Community Board UPDATE

A word from our Board Chair, Dave Ryan –



“There's a lot happening in our area, and the Board is excited to see several infrastructure projects underway or nearing completion. From upgrades to public toilets to the new dump station on Lindsay Road and ongoing stormwater flood modelling – Whangamatā is really benefiting from Council's hard work.

As we head into the holiday season, please check our website for updates on summer rules like alcohol ban areas and designated off-lead zones for dogs. Stay informed and safe this summer.”

dave.ryan@council.tcdc.govt.nz

The Board's next meeting is on Tuesday 26 November, at 10am at the Council board room at 620 Port Rd, Whangamatā. Agendas are at tcdc.govt.nz/meetings where you can also find links to recordings of meetings.

NEW WHANGAMATĀ DUMP STATION

The new dump station at 118 Lindsay Rd, designed to the New Zealand Motor Caravan Association Dump Station Guide Standards, will be open before the Christmas rush. Once the new dump station is active, the current dump station on Martyn Rd will be decommissioned.



Mayors Taskforce for Jobs (MTFJ)



Kathleen Makiri, Rudy Lopes, Brain Walker, Mayor Len Salt, Simone Hughes, Gary Smith, Tyrese Ratu, Steve Braithwaite, and Helen Flynn.

Mayor Len Salt met earlier this month with employers in Whangamatā who have taken on young MTFJ jobseekers.

Two of these have now begun apprenticeships, one as a butcher and one as a builder.

“Their dedication to providing mentorship and opportunity not only helps our jobseekers, but also enriches our wider community,” says Mayor Len. “Together, we're building a future rooted in mutual support and shared success.”

Find out more at tcdc.govt.nz/MTFJ



Lead the way.

Dogs should be kept on lead in all shared spaces except designated off-lead areas.

tcdc.govt.nz/leadtheway

[@ThamesCoromandelDistrictCouncil](https://www.facebook.com/ThamesCoromandelDistrictCouncil)

[coromandel_tcdc](https://www.instagram.com/coromandel_tcdc)

Get our free eNewsletters!
www.tcdc.govt.nz/subscribe

tcdc.govt.nz

customer.services@tcdc.govt.nz
Private Bag, 515 Mackay St, Thames
Phone: 07 868 0200

Tomasi Cama, an extraordinary story

With the visit to Whangamatā last week by the All Black Sevens team, and their mission to set off to Dubai on the first leg of this world title for sevens rugby, the spotlight will fall on head coach Tomasi Cama (named after his famous father, legendary Fijian player).

Cama was born in Suva, with his family from the island of Koro in the Lomaiviti group in Fiji. Up until the age of 12 he lived in the village of Sinuvaca with his grandparents (his father's side), where life was simple - they lived off the land growing fruit and vegetables, amongst close family and friends, and playing with cousins.

His grandparents were the most influential people in his life, with his grandmother being a straight shooter - she'd give us a smack if she thought we needed to be straightened up! Grandad was more on the caring side.

In the village they'd often say "We don't have much, but we have everything."

"I learned from my grandparents to be grateful for everything we had, although that wasn't much until I came here to New Zealand.

Growing up, church had a massive impact. Every evening we had



devotional prayer, then Sunday school at 10.00 am. And you had to attend unless you were sick or away. If you didn't show up, you were punished at school on Monday.

"As a kid, I wanted to be like my dad- just play rugby." So when Tomasi showed some talent his father took him under his wing, showing him what he needed to do if he wanted to come along with his rugby. He could play for any team that asked him under one condition- he had to be well

prepared. Tomasi first got noticed when still living in the village. There was a big tournament for the men and a rather scared 16 year old ended up playing against his dad in his first tournament. He then played at provincial level for the under 20's and under 21's when 17 yrs old.

At 19-years-old he came with his father to a tournament in Wellington, and ended up playing rugby for Manawatu. It was here that he was noticed by Gordon Tietjens, and was asked if he wanted to play

for New Zealand. "That was huge to make the team, and then be part of it for years and enjoy the overseas travel and cultures. I was so grateful for all these opportunities."

Every time he lined up to play against Fiji was a special occasion, and when he plays he sees himself as a New Zealander.

After a hugely successful playing career, Tomasi made the shift to coaching. It was one thing doing what you know, but going into coaching is more complicated.

The big thing was to understand how people learn, and to become better at communicating my ideas to the players. From previous coaches (Rennie and Titch) he learned the importance of hard work, and looking after your health and fitness.

"We're obviously from different backgrounds, and it's about how we bring all our cultures alive within our team culture. It's a family away from our own family, eh?"

Good luck to Tomasi Cama and his team as they set out to make their own legend.

- Mark James,
Whangamatā News sports reporter



All Black Sevens visit Opoutere

It was a very special day for our kura at Opoutere School when the All Black Sevens gave them a surprise visit! There was bull rush on the field, signing in the classrooms and opening with a Mihi whakatau (Welcome first). AB's spoke and sang a waiata to the children. Such amazing singing! The Opoutere students all got to ask them some questions from each class. Tane Mahuta (Opoutere Kapa Haka group) performed four items. And even more wonderful, the Sevens presented the school with two signed playing jerseys!

- Jennie Black



CoroVets

Companion & Production Animal Services

Is Your Pet Ready for Summer Holidays?

Make sure they are up to date with their Vaccinations and Flea and Worm treatments.



Waihi Clinic:
10 Mueller St, Waihi

Whangamata Clinic:
215 Aickin Road, Whangamata

Tairua Clinic:
1 Wharf Road, Tairua

0800 267 683
info@corovets.co.nz
www.corovets.co.nz

All Black Sevens a hit!

The awesome AB Sevens team came to Whangamatā and boy were they impressive, not only with their approach to training and fitness, but with their interactions in the community as well.

Russell Choat (President Whanga Rugby) commented on how successful the visit was saying "it was so great to see another dimension of rugby, which is a lot

quicker. The two training sessions on Thursday were very entertaining and the local community turned up in good numbers to see these talented athletes.

The management of the team loved the experience and our community and are keen to come back in the near future."

Observing and photographing the

training session was certainly an eye opener. From the gentle warm up through to the high intensity game condition plays, it was competitive throughout.

What amazed me the most was the speed of the plays, and the pure physicality of these young men. And all of the data on every player is GPS tracked, used for real time analysis. Coach Cama has these

guys humming for sure and they look every bit ready for the season kick off in Dubai.

As Russell said "All in all it was a great experience and another feather in the hat for our great little town."

More photos FB @whangamataneews

- Story and photos Mark James, Whangamatā News Sports Reporter





Power and performance

Limited numbers
SPRING SPECIAL

SAVE \$1000

Q CARD
24 MONTHS INTEREST FREE*



LONG TERM FINANCE



SAVE \$750

TS142T
42" Deck, Hydrostatic Transmission, 25hp Husqvarna Series V-Twin Engine

\$6,240

\$6,990 RRP



TS142TXD
42" cut, V-Twin Kawasaki engine, pedal operated hydrostatic transmission, auto locking differential.

\$6,990

\$7,990 RRP

Offers valid while stocks last.

*24 months interest free is available on Long Term Finance (LTF) for in-store purchases only until 31/12/2024. Min spend \$3,490. Lending criteria, \$50 annual Account Fee, fees Ts&Cs apply. \$55 Establishment Fee applies to your first LTF transaction, \$35 Advance Fee applies to subsequent LTF transactions. Min payments of 3% of the monthly closing balance or \$10 (whichever is greater) are required throughout interest free period. Paying only the minimum monthly payments will not fully repay the loan before the end of the interest free period. Q Mastercard or Q Card Standard Interest Rate (28.95% p.a.) applies at the end of LTF Interest Free Period. Rates and fees subject to change. Columbus Financial Services Limited and Consumer Finance Limited reserve the right to amend, suspend or terminate the offer and these T&Cs at any time without notice. Valid 01/09/2024 - 31/12/2024.



Shaun Prescott, Sales Manager
021 285 4870 / 07 864 7801
1 Hikuai Settlement Road, Hikuai
www.prescottsgarages.co.nz



5 YEAR DOMESTIC WARRANTY#
Terms and Conditions apply, see HUSQVARNA.COM for details.

We sell and service Husqvarna's huge range of product. We also demonstrate and deliver.

Visit husqvarna.com today

All aflutter with butterflies

Have you taken a stroll through the Waihi Butterfly Garden in Waihi? Oh my goodness, what a treat! A delight of wonder and a little person's dream.

Whangamatā News found this gorgeous pocket of creation in Baker Street, Waihi and tucked down by the Squash Club... you'll see the sign.

The Butterfly Garden is a combined project between Habitat Enhancement and Landcare Partnership Waihi and Waihi and Herb Society.

A calm sunny day is the perfect time to meander along the Mill Stream Walkway and catch Monarch butterflies chasing around the oasis.

beautiful gardens, walkways, a fairy house (of course) a fairy tea set all ready for the magical to enjoy, teacups and quirky to delight me, thankfully Whangamatā News took the camera! If you stroll further you will come to the biggest bamboo grove, like a cave of excitement, just follow your nose to the sun!

To my delight I found the most

- Jennie Black



Curtains and Blinds and More



Whangamatā and surrounds for:

- Curtains, Sheers, and Linings
- Sun-screen, Light-filter, & Blockout Roller Blinds
- Wood, PVC, and Aluminium Venetian Blinds
- Honeycomb Blinds | Roman Blinds
- Wood and PVC Shutters
- Motorisation and Automation

Locally owned and operated providing a complete in-home service from consultation to installation

Contact Louize or Gavin on

027 4777 916

or email info@curtainsandblinds.co.nz

CARAVAN FOR SALE

Jayco 28 Foot 2002



Need room for family this summer?
Holiday workers need accommodation?
AFFORDABLE TINY HOME!

Totally renovated, new carpet, vinyls, repainted interior, shower, toilet, double bed, oven, microwave, it really is chic! All the extras!
New 5 year electrical warrant.

View Chartwell Avenue, Whangamatā by appointment
Phone 021 0232 1661







This little fish



This little fish went to a foreign fish market, this little fish was ground into cat food, and this little fish is on the brink of collapse. A tragic ending is on the horizon for our humble baitfish.

Disturbing reports along the Coromandel and Whangamata coastline paint a grim picture: baitfish workups are becoming few and far between.

Sue Sinclair, Zone 3 Delegate & NZSFC Board Member is deeply concerned for our Coromandel region. "Within our lifetimes the frequent workups we'd see off the beach have disappeared. Baitfish aren't just bait, they're a valuable food source for an entire ecosystem. Without them what will our marine life eat?"

Just because these small yet mighty fish are at the bottom of the food chain, doesn't mean they are less important. In fact, it makes them more crucial. Officials have decided not to review the commercial catch limits of baitfish species on the east coast between Cape Reinga and Wellington this year. But, ignoring depletion will not make the lack of baitfish disappear.



To make matters worse, there's no certainty or science that supports whether recent catch levels for baitfish are sustainable in the long term. Baitfish are exported for as little as \$1.60 per kilo so there's few economic incentives for quota owners to cough up the dollars to fund a stock assessment.

The cherry on top? More than 10 million kilos of blue and jack mackerel were commercially harvested from the northeast coast last year.

It's ludicrous that such a large fishery operates with so little available, reliable data. A recent

NIWA investigation into the causes of mushy-flesh snapper found that the Hauraki Gulf has experienced a significant decline in phytoplankton productivity - tiny particles which baitfish consume - due to "recent weather patterns".

Decades of overfishing and recent poor productivity mean baitfish populations are on the path of depletion. Blaming the climate is just an excuse for inaction. While we can't change the weather patterns, we can control the amount of baitfish taken from our waters, and sold overseas for pittance. If climate is the main reason for decreased food production and an ecosystem under stress, then now is the perfect time for the fisheries Minister to take a precautionary approach.

LegaSea and The New Zealand Sport Fishing Council will continue to put pressure on the Minister to conduct a stock review and lower commercial catch limits for baitfish stocks on North Island's east coast. But we need your support. By supporting LegaSea & the NZSFC, you are supporting our efforts for increased abundance of baitfish.

Because without baitfish in our inshore waters, we can kiss goodbye to enjoying our favourite kai moana and a marine environment bursting with abundance.



Join us for Whangamata
Lunch en Blanc
Saturday 15 February 2025
12-4pm
Location - well that is a well kept secret, until the day




The idea all started with a simple desire to meet friends and share each others company, back in 1988 in Paris
All you need to do is gather your friends, put the date in your diary and scan the QR code to register

Numbers are strictly limited, \$40 per person
BYO Picnic Lunch & Beverages
Supporting Whangamata Surf Life Saving Club



HELP US TO HELP YOU. BECOME A MEMBER. www.whangamata.org.nz

JOIN US FOR A

CHRISTMAS MARKET

Arts and Crafts
Christmas Gifts,
Quilters De-stash
Cafe on site

NOVEMBER 30, 2024
FROM 10 AM TO 2PM

Whangamata Memorial Hall,
Port Road, Whangamata

Hosted by Whangamata
Patch & Quilt



Carols in the Park wants singers

**of all age groups to sing Christmas
carols at Onemana on 23 December
& Williamson Park on 24 December**

First practice at Baptist Church 4pm,
Sunday 24 November followed by
practices 4pm on 1 and 15 December.

Also wanted:

Fairies and elves for the Santa Parade
float and to help Santa distribute lollies at
Williamson Park on 24 December.

**Contact Sandie Moss
027 472 7772**

Christmas cheer from the Whangamata Lions



As 2024 comes to a close the Whangamata Lions do what they do best, supporting their community and visitors to our beautiful town.

The Whangamata Real Estate Christmas Parade is being held on Friday the 13th of December, starting at 5pm from Lincoln Road and finishing at Williamson Park, at the Christmas fair.

The Lions are taking on marshalling duties. You'll see us in our blue shirts and high-vis vests. Give us a wave!

Let's not forget the Whangamata Lions Christmas Tree Grotto. This will be held at the RSA on

Thursday, Friday and Saturday, 19, 20 and 21 December from 5pm to 7pm. Gold coin entry appreciated.

If you would like to be involved in the setting up of this wonderful occasion, please email office@nzpbs.co.nz.

Last, but not least, we will be selling our Christmas Trees at a new location this year. They will be available from 10am on Saturday 14 December at 114 Tamaki Road, (street behind the RSA). Don't leave it too late to get your Christmas Tree shining this year!

Merry Christmas and best wishes for a wonderful 2025.

- Your Whangamata Lions

PROPERTIES FOR SALE BY LINDSAY



210 CHARTWELL AVENUE
3 BED | 2 BATH | GARAGE
WORKSHOP | SHED



401 OTAHU ROAD
3 BED | 2 BATH | GARAGING
214M TO THE WATER (APPROX)



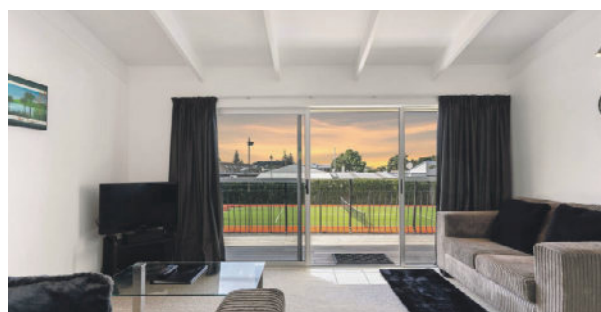
140B SHARYN PLACE
3 BED | 1 BATH
COVERED CARPORT | NOW \$897,000



229 CHARTWELL AVENUE
3 BED | 1 BATH | GARAGING
CABINS AND MORE



143 LORRAINE PLACE
4 BED | 2 BATH | OFFICE
GARAGING | 989m²



UNIT 18/415 PORT ROAD
2 BED | 1 BATH | 2 CAR | \$460,000
(PLUS GST IF ANY)

Local resident, totally reliable, more than reasonable rates.

Lindsay Turnbull | 0274 238 093 | lindsay.turnbull@realty.co.nz | atrealty.co.nz/lindsayturnbull





Whangamata Real Estate

LICENSED REAA 2008

07 865 8499 328 Ocean Road, Whangamata whangamatarealestate.co.nz



FOODBANK COLLECTION

Sunday 1 December 10am – 12pm

WHANGAMATA – ONEMANA – OPOUTERE

Our team will be driving all the streets with the help of our emergency services collecting non-perishable food items. You can also drop off any items at our Ocean Road office

Help us stock our local foodbank prior to Christmas!

WHANGAMATA CHRISTMAS PARADE & FAIR



**Friday 13 December
5.30pm – 8pm**

Join us on Port Road for the parade.

Get those creative imaginations buzzing and register a float, you still have time.

Collect a registration form from our office at 328 Ocean Road, Whanga Books or the Information Centre.

But the fun doesn't end there. After the Parade keep the excitement going at Williamson Park, with entertainment, games, delicious food, markets and activities for the whole family.

So, mark your calendars and joins us for some fun.



Squash business house

Four teams competed over the last four weeks with finals on 6 November. There were some excellent games that were entertaining to watch with some very close matches.

The draw was managed by Les Fleming with Patsy Fleming record and timekeeper. Toasted

sandwiches and bar facilities by Barb was well received.

The winners were Chris Goulding, Jason Berry, Connor Mullin and Matt Rayner (pictured receiving their sports towels and socks). Captain Bryan Hastings was away on the final night.



Local business a winner in golf tournament

The prize table at a golf tournament is very important to the competitors. They are usually very well scrutinised by the players and comparisons are often drawn. Which is why the Bayleys Paradise Coast Golf Classic decided to do things a little differently.

Firstly, they connected with Te Arai Links and secured a wonderful major prize, then Trade Me donated a Platinum Marketing package. Over \$5,500 worth of prizes drawn randomly from all entries.

Then, they went shopping. Rather than buy another putter or golf bag, the organisers decided to support local companies. "Our budget for prizes was \$10,000" said Patrick Kerr, Chair of Enterprise Whangamata, "...so we went shopping and every business we spoke to gave us an amazing deal. It's what our organisation is all about: giving back to our members



- to local business".

Included on this years prize table is the exclusive Coromandel Chocolate range including their amazing Bon Bon Truffles. Also vouchers from Smoky Pallet, Hello Friday, Craft Haus, Saskia and Co and a \$300 Coromandel Ocean Adventure prize for best gross.

"The combination of Tairua, Pauanui and Whangamatā prizes connects the Paradise Coast brand and helps lay the platform for the tournament to keep growing".

The Bayleys Paradise Coast Golf Classic: Pauanui, Tairua and Whangamatā from Friday, 29 November to Sunday, 1 December.



100 Casement Road

870m²

Exceptional Building, Long Term Tenant

Discover a unique investment opportunity in the heart of Whangamata! This building was constructed in 2000 and is leased by the well-established Whangamata Sports Bar providing a reliable return and potential for growth. Nestled in a prime town centre location, this property is just a stone's throw away from the vibrant main street Whangamata is renowned for. Building area of 480 sqm, land area of 870 sqm with a Freehold title. The vendor is retiring and needs this property sold.

Don't miss out on this chance to secure a valuable asset in a sought-after location. Contact Chris today for more information and to arrange a viewing.

Chris

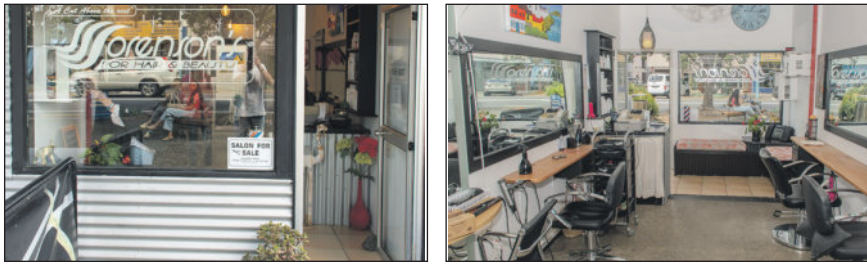
Christopher Brown
027 257 6602



Paradise Coast Realty Limited
Licensed Agent REAA 2008
This document has been prepared to assist solely in the marketing of this property. While all care has been taken to ensure the information provided herein is correct.

CLASSIFIEDS

BUSINESS FOR SALE



BUSINESS FOR SALE

"Time for a new chapter for Cindi"

After 26 years, Sorenson's Hair is selling, and Cindi is moving to Auckland to be with family. The centrally located salon is fully equipped with 4 chairs, 2 basins and very chic decor. Reasonably priced.

Don't wait ... contact to view! Cindi 0274 583 296 or 07 865 8117



**709 PORT ROAD,
WHANGAMATA
PHONE 07 865 8117**

PUBLIC NOTICE



**WHANGAMATĀ COMMUNITY
SWIMMINGPOOL**

CLOSER TO REOPENING EVERY DAY

Every day we're getting closer to reopening our much-loved community facility. Thank you for your support while we have been working on refurbishment. We apologise for the inconvenience caused.

PROUDLY SUPPORTED BY
Whangamata Real Estate

whangapool.co.nz

Recycling at Info Centre

Good news for drinks and liquid carton recycling in Whangamatā... A collection point is now installed in our Information Centre for 7 day drop off access.

Please cut open flatten and wipe clean first. We will empty often and forward to a recycling centre where it is made into construction wallboard in Hamilton.

Also, a big thank you to the Whangamata Sunday market crew for their generous donation of \$300 for our e-waste transportation costs to assist the Whangamatā resource recovery trust in our weekly service.



Sports results

MAH JONG

15 November: We had 41 players. Judy, bless her, stood down so we had 40 players with full tables.

Judy had organised a special day with only 3 and 4 point hands in the first half with exchange of the flowers from the discards. The second half we continued with exchanging the flowers but could not look at our hand sheets and do all hands. This was fun although slowed us down a little bit looking for exchange for flowers. The second winner of the table got a bar of chocolate.

The overall winners were:
1st with 46 pts Jill Thomson and Heather Dansbry Scott
2nd with 44 pts Irene Burns
3rd with 40 pts Denise Wallace

Lucky number today was 12 and out of 4 with this number Linda Hopkins won.

TABLE TENNIS

14 November: Played at the Whangamata Club, Roger Wolfe was our winner with 11 points, Brenda Smith was 2nd with 8

points and Tony Rowe, Barbara Hoy and Wayne Broome all came 3rd equal with 7 points. Lots of fun and hard fought games.

TWILIGHT CROQUET

11 November: Twilight enjoyed a lovely spring night and some very close games. Bridge Buddies v Patrollers (9-8 and 5-7), Dare Devils v Cornerstone (9-10 and 6-9) Rumlbers v Quizzers (6-6 and 7-10) and Rebus v Bits & Pieces (11-11 and 7-8).

Anyone wishing to try their hand at croquet this season - as a casual stand in for teams that find themselves short for various reasons - please contact Filly on 027 412 8353. It really is fun.

WHANGAMATA RSA 500 CARD CLUB

6 November: The winner on the day was Jacqui Grey. Monique Thomas won the chocolate bar. Robyne Curd won the raffle.

13 November: The winner on the day was Linda Harris. Michael Paris won the chocolate bar. Graeme Allen won the raffle.

Send your team / club event results to whangamatanews@gmail.co.nz

Whangamatā Tides 2024

NOVEMBER 2024											
☾ New Moon: 2 nd ● Full Moon: 16 th											
Date		High tide	Height (m)	High tide	Height (m)	Low tide	Height (m)	Low tide	Height (m)	Sun rise	Sun set
		AM		PM		AM		PM			
22	Fri	0:22	1.7	12:54	1.8	6:23	0.3	19:05	0.4	05:51	20:12
23	Sat	1:14	1.7	13:45	1.8	7:13	0.4	19:58	0.5	05:51	20:13
24	Sun	2:07	1.6	14:36	1.7	8:06	0.5	20:51	0.5	05:50	20:14
25	Mon	3:02	1.6	15:27	1.7	9:01	0.5	21:43	0.5	05:50	20:15
26	Tue	3:58	1.5	16:17	1.6	9:56	0.6	22:35	0.5	05:49	20:16
27	Wed	4:53	1.6	17:05	1.6	10:51	0.6	23:25	0.5	05:49	20:17
28	Thu	5:45	1.6	17:52	1.6	11:42	0.6			05:49	20:18
29	Fri	6:34	1.6	18:37	1.7	0:11	0.5	12:29	0.6	05:48	20:19
30	Sat	7:19	1.7	19:21	1.7	0:55	0.4	13:14	0.5	05:48	20:20

DECEMBER 2024											
☾ New Moon: 1 st & 31 st ● Full Moon: 15 th											
Date		High tide	Height (m)	High tide	Height (m)	Low tide	Height (m)	Low tide	Height (m)	Sun rise	Sun set
		AM		PM		AM		PM			
1	Sun	8:02	1.7	20:04	1.7	1:36	0.4	13:57	0.5	05:48	20:21
2	Mon	8:44	1.8	20:47	1.7	2:17	0.3	14:40	0.5	05:47	20:22
3	Tue	9:25	1.8	21:30	1.7	2:57	0.3	15:23	0.5	05:47	20:23
4	Wed	10:07	1.8	22:14	1.7	3:38	0.3	16:08	0.4	05:47	20:24
5	Thu	10:50	1.8	22:59	1.7	4:21	0.3	16:53	0.4	05:47	20:25
6	Fri	11:34	1.8	23:46	1.7	5:05	0.3	17:40	0.4	05:47	20:26
7	Sat			12:21	1.8	5:51	0.3	18:29	0.4	05:47	20:27
8	Sun	0:35	1.7	13:10	1.8	6:40	0.3	19:20	0.4	05:47	20:27
9	Mon	1:28	1.7	14:02	1.8	7:32	0.4	20:14	0.3	05:47	20:28
10	Tue	2:25	1.7	14:56	1.8	8:29	0.4	21:10	0.3	05:47	20:29
11	Wed	3:26	1.7	15:52	1.8	9:29	0.4	22:07	0.3	05:47	20:30
12	Thu	4:29	1.7	16:50	1.8	10:31	0.4	23:06	0.2	05:47	20:31
13	Fri	5:32	1.8	17:48	1.9	11:33	0.4			05:47	20:31
14	Sat	6:32	1.9	18:46	1.9	0:04	0.2	12:33	0.4	05:47	20:32
15	Sun	7:29	1.9	19:43	1.9	1:01	0.2	13:31	0.3	05:48	20:33
16	Mon	8:23	1.9	20:38	1.9	1:55	0.1	14:26	0.3	05:48	20:33
17	Tue	9:15	2.0	21:31	1.8	2:46	0.1	15:20	0.3	05:48	20:34
18	Wed	10:04	2.0	22:21	1.8	3:36	0.2	16:11	0.3	05:49	20:35

Only the BEST TRADIES will do! Use Locals... For Locals... Support Locals!

ASIAN FOOD



A&A Asian Store
Shopping made easy

17 ROSEMONT ROAD, WAIHI (opp. Farm Source)

- Japanese • Korean • Filipino • Vietnamese
- Malaysian • Thai

Ramen & Buldak noodles, corn dogs, dumplings, fish cakes, frozen meals, sweets, drinks and so much more...

FREE DELIVERY TO WHANGAMATA
Tuesday - Sunday 9am to 5pm • Phone 021 0256 107



SMALL ENGINE REPAIRS

ANTS REPAIRS

Whangamata-based small engine repairs & maintenance

- Chainsaws • Lawnmowers
- Ride ons • Weeders

121 Sharyn Pl • 021 0244 2791
ants.repairs.nz@gmail.com

SCAFFOLDING



SCAFFOLDING | SHRINK WRAP
TEMPORARY FENCING

027 611 6822

bradley@activesite.co.nz

www.activesite.co.nz

211 Peacockes Rd, Hamilton



LANDSCAPING

Beach Contractors
& Landscape Supplies

LANDSCAPING SUPPLIES:

Bark, mulch, compost and topsoil	Sand, lime chip, river stones and pebbles	Cement, builder's mix and a range of metals
----------------------------------	---	---

Delivery service available

Whangamata Yard
2546 Waihi Whangamata Rd
M. 027 261 1262

Waihi Beach Yard
691 Waihi Beach Rd
P. 07 863 5340

LAND DEVELOPMENT

Birch
LAND DEVELOPMENT CONSULTANTS

Subdivisions
Boundary Markings
Land Use Consents Topographical Surveys
Building Setout and Certifications

Contact us
0508 4 BIRCH
tairua@birch.nz
244 Main Road, Tairua
www.birch.nz

EARTHWORKS

Blackhill
EARTHWORKS

- Bobcat & excavator
- Tight access work
- Site works
- Topsoiling
- Driveways
- Hole drilling
- Concrete prep
- Cartage

Shay 021 742 966 | www.blackhillearthworks.co.nz
info@blackhillearthworks.co.nz

PAINTER & DECORATOR

BOOF BOLAND
PAINTER & DECORATOR

M: 0274 367 254
E: jenboof@outlook.com

IT SUPPORT

Boot it.

FIBRE INTERNET
now available to order from Boot I.T.

We are the Coromandel's only local Fibre Internet Provider, and the ONLY provider that offers 7 days per week support.

Call us on 0800 242 266 to find out more.

CONCRETE

BROWN MORE CONSTRUCTION
CONCRETE CONTRACTORS

Any Concrete Requirements: Slabs, driveways, patios, paths, etc
All types of concrete - colour - finish
Council Permits for Vehicle Crossings
Excavation to finished product • Saw cutting & drilling

We take pride in doing a quality job at a competitive rate

REX: 027 285 5489
P. 07 863 3364 • office@brownmoreconstruction.co.nz
www.brownmoreconstruction.co.nz

PAINTER & DECORATOR

Gavin Johnson
PAINTER & DECORATOR

Interior/Exterior Painting
Wallpapering
Cedar Cleaning and Restoration Service

0224 552 363
brushstrokeswhangamata@gmail.com

DIGGER & CARTAGE

COAST DIGGER & CARTAGE

- Digger & Tip Truck Hire
- Driveways
- Building Digouts
- Site Works
- Concrete removal
- Track work
- Hole Drilling
- Tree Felling & Removal

Murray Clarke 027 2010 209
muzzclarke66@hotmail.com

FENCING

RURAL FENCING • RESIDENTIAL FENCING
POST AND RAIL • RETAINING WALLS
POLE SHED BUILDINGS
ORCHARD BUILDS & MAINTENANCE

coastline
FENCING LTD

BLAIN TEMPELMAYER 027 784 6538
coastlinefencing7@gmail.com

PAINTER

Coastline Property Painters

Protecting your investment
Interior ■ Exterior ■ Roofs

Communication is everything
Updates & photos as your job progresses

Call Richard Upton: 0274 884 881 / www.coastlinepropertypainters.com

OUTDOOR COVER

Covered.

- Louvres
- Privacy Panels
- Awnings
- Sails

LOUVRESYSTEMS

info@covered.co.nz 07 865 6207 or 027 497 1236
www.covered.co.nz 300 Casement Rd. Whangamata

Use Only the Best Services in our Community!

Use Locals... For Locals... Support Locals!

CURTAINS / BLINDS



Specialising in:

- Curtains
- Roman Blinds
- Cushions
- Duvet Covers
- Roller Blinds
- Shutters

croft design

306 CASEMENT ROAD, WHANGAMATA
M. 0274 481 957 | E. beth@croftdesign.co.nz

CURTAINS / BLINDS

Curtains and Blinds and More
Whangamatā

LOCALLY OWNED AND OPERATED

- Curtains
- Venetian Blinds
- Roller Blinds
- Romans Blinds
- Shutters
- Honeycomb Blinds

100% Mobile Service
We come to you, Free Measure and Quote

Call Louize or Gavin
on 027 4777 916
or email info@curtainsandblinds.co.nz

FRAMING



- Picture framing
- Framed mirrors
- Art installation
- Pick up & delivery

Ade Cunningham
M. 0274 929 695 or P. 07 575 9149
info@framesnz.co.nz • www.framesnz.co.nz
118 Brook Pl, Whangamata

ELECTRICIAN

GREG HENSTOCK ELECTRICIAN LTD

Registered Electrician
One Man Band

WHANGAMATA
0272 580 366



HANDYMAN

HANDYMAN

30 yrs experience, specialising in:

- Bathroom, deck & building repairs
- Gib fixing & plastering
- Interior /exterior painting

Please ring Rex on 021 997 428

BUILDING & LANDSCAPING

HBL HANSEN BUILDERZ
BUILDING & LANDSCAPING

COMMITTED TO EXCELLENCE
Contact us to discuss your project & a free estimate today



ADRIAN 0274 263 895 | hansen.builderz@gmail.com | HBLHomesnz
Residential | Commercial | Alterations | Additions

ARCHITECTURAL BUILDERS

HOME & Lifestyle

- Architectural Builders
- Interior & Colour Design Services
- Project Management

For trusted expertise with your building project
Katrina Jackson 027 273 0685 | Leigh Goodman 027 4475 423
info@homeandlifestyle.co.nz

BUILDING WASHING

HOUSE WASHING

Exterior house or commercial building wash, roof wash, fences, driveway, patios – soft-wash for best moss and lichen clean and treatment, exterior window cleaning, or general water blasting, 100m of hose so access is no problem
Prompt local service with 20 years' experience

Ph 0800 747 787 email atlasgroup@xtra.co.nz
or dial Andy direct on 027 313 4386

CLEANING



we'll take care of it

- Carpet Cleaning
- Pest Control
- Flood & Fire Restoration
- Stain Removal
- Upholstery Cleaning



07 863 8358 or 0800 225 552
whangamata@jae.co.nz

50 YEARS

AUTOMOTIVE & BOATS



BOAT TRAILERS, CARS, CLASSIC & HOT RODS

ONLY Repco STOCKIST IN TOWN! ONLY HONDA AGENT IN TOWN!

Aickin Road, Whangamata (next to Bunnings)
P. 865 9073 | E. office@jcdcustoms.co.nz
Mon-Fri from 8am

TRAVEL BROKER



Kay Gregan
TAANZ BONDED
Travel Broker &
CLIA Accredited
Cruise Specialist

THE TRAVEL BROKERS
a member of helloworld TRAVEL LIMITED

AWARD-WINNING TAANZ BONDED TRAVEL BROKER
Travel Broker & CLIA Accredited Cruise Specialist
Whangamata 07 865 9568 | M: 027 337 6222
Kay.Gregan@thetravelbrokers.co.nz
thetravelbrokers.co.nz/kaygregan

BUILDER

Keith the Builder LBP

Need something done?
For maintenance, decking, fencing, repairs, interior work and all enquiries



PHONE FOR FREE QUOTE
Keith phone 0272 262 039

ELECTRICAL

For All Your Electrical Needs



Now Open In A Second Location
Introducing Laser Electrical Waihi

WAIHI 07 863 7746 | WHANGAMATA 07 865 9309
waihi@laserelectrical.co.nz | whangamata@laserelectrical.co.nz
40B Kenny Street | 100 Lindsay Road

KITCHENS

McBeth Rd Orchard Joinery
Affordable joinery

Kitchens new or upgraded
Laundries & bathrooms
Wardrobes & storage units
Free estimates

Tony & Nicky Ball - 027 229 2255
Whangamata

BUTCHER

MEAT AT THE BEACH

- Specialty Cuts • NZ Home Grown Meat only
- In-Store made Sausages • Home of Whanga Bacon, Whanga Black Pudding & Ham on the Bone!

Get in to order your Christmas Ham

601 PORT ROAD, WHANGAMATA P. 07 865 7241
MON-FRI 8.30AM-5PM • SAT 8.30AM-3PM

Only the BEST TRADIES will do! Use Locals... For Locals... Support Locals!

BUILDER

MJC BUILDERS

Building with pride

- FENCING
- DECKS
- PERGOLAS
- ROOFING
- ALTERATIONS
- BUILDING REPAIRS
- CONCRETE DRIVEWAYS
- FULL LANDSCAPING



MIKE CUNNINGHAM M. 021 0677 555
E. mjc.builder.whangamata@gmail.com

TREE SPECIALIST



QUALIFIED ARBORIST

30 years experience in all aspects of tree work

- Pruning
- Felling
- Storm damage
- Hedge trimming
- Confined space dismantling
- Debris chipped
- Free quotes and more

Professional and reliable service – fully insured

Phone Greg Nicholson on 07 865 6769 or 021 133 0937
email: nicholsontreeservices@hotmail.com

PODIATRY

Pedicare Services

Professional Foot Care

Alison Walkington
Registered Nurse

Home visits by appointment



Mobile 027 663 2320 or
email alison.c.walkington@gmail.com

ARTWORK

PET PORTRAITS
& ANIMAL ART

by Donna

- animalartbydonnanz
- animalartbydonna
- 027 455 0608
- donnaredbeach@msn.com



PHOTOGRAPHER

Pete Stretch PHOTOGRAPHY

Family portraits • Weddings • Corporate

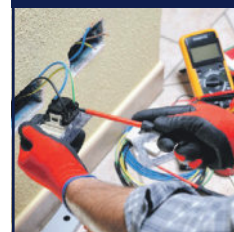
027 458 1179

peterstretchphotography@gmail.com

20% off all family group sessions
until 30th September 2024

ELECTRICIAN

PITCHER ELECTRICAL



YOUR TRUSTED
MASTER ELECTRICIAN
working in Whangamata,
Opoutere, Onemana and
Whiritoa

**RESIDENTIAL AND
COMMERCIAL SERVICES**

TONY PITCHER 0274 589 573

WINDOW CLEANING

Your ecofriendly window cleaning service.

Mike Horton M 021 501 324
info@purenclean.co.nz www.purenclean.co.nz

HEAT PUMPS



We Sell and Service all Major Brands

Your heat pump specialist
On site marine & commercial refrigeration

Call today for a hassle-free quote

027 933 8599

www.reefrefrigeration.co.nz

ROOFING

RIKKI ROOFING
we aim for the roof shout

- ▶ Residential re roofs & new roofs
- ▶ Spouting
- ▶ Cladding
- ▶ Maintenance & re screws

Rikki Daysh, Owner/Operator
022 408 8424
rikkisroofing@gmail.com

PLUMBER

Russell CHOAT
GAS & Plumbing
Whangamata

FOR ALL YOUR GAS-FITTING, PLUMBING,
DRAINAGE & ROOFING REQUIREMENTS
Registered craftsman & member
of Master Plumbers

M. 0274 714 869 E. office@choatsplumbing.co.nz

ELECTRICIAN / DOG GROOMER

Rusty Sparks
EVERYTHING
ELECTRICAL
Residential, Commercial,
Data, Alarms
021 800 017
admin@rustysparks.nz

**PIMPED PUPS
GROOM ROOM**
021 850 017
WHANGAMATA

WINDSCREEN REPAIRS

secureglass | windscreen repairs

MONDAYS:
RSA Carpark
Whangamata

TUESDAYS:
Fresh Choice
Carpark
Waihi

André Gillbanks
Phone 021 617 664

Chip Repairs
Windscreen Replacements
Insurance Claims Arranged

ARBORIST & FIREWOOD

SHORT BACK 'N' SIDES LTD
Arboricultural Contractors

TREE PROBLEMS?
Dismantle, pruning, removal, stump grinding. BIG or SMALL – we do them ALL!
0274 390 367
www.shortbacknsides.co.nz

FIREWOOD
Available all year round. Smoking chunks or dust, kindling, bagged wood. Delivery available or pick up on Fridays from 15 Dean Cres, Waihi. Gold Card discounts. Also 100s of native and exotic milled slab timber, garden mulch, smoking wood.
0274 390 367 or our firewood hotline 022 043 1862

BUILDER

SKF
RESIDENTIAL
SERVICES
LBP Builder / Renovation Specialist
07 865 6555 / 027 238 1659
skfrs@xtra.co.nz

Use Only the Best Services in our Community!

Use Locals... For Locals... Support Locals!

BINS

Skip Bins, Wheelie Bins, Front Load Bins

Contact us today! *We can help!*



0800 4 MY BIN - www.smartbins.co.nz

Proudly 100% Kiwi owned

BOARDING KENNEL / CATTERY



SPOT X Quality care and facilities in a rural setting

Office hours: 9am-12 noon and 3-5pm daily
INSPECTION WELCOME
Ph 07 865 8242 or 027 624 3890
Annette Gillatt
4km south of Whangamata on the main road

BOARDING KENNELS AND CATTERY

DRIVING LESSONS




Helping young people to drive safely and intelligently.

Thames Driver Training

Book online at thamesdrivertraining.co.nz
Gavin Buchanan - Thames Driver Training
027 268 6381

REFRIGERATION & AIR CON



TIDELINE REFRIGERATION
WHANGAMATA

- * HEAT PUMPS
- * REFRIGERATION
- * AIR CONDITIONING
- * VENTILATION

SERVICING IN THE COROMANDEL AREA
0272121994 - 0277251820
TIDELINEREFRIGERATION@GMAIL.COM
WWW.TIDELINEREFRIGERATION.COM

PAINTER



TOTAL PAINTING SOLUTIONS

CALL LEE ON 0275 656 336
Lee.tpms@gmail.com

30 Years of Interior & Exterior Painting
Delivering High-Quality Service with Exceptional Results

ARBORIST



- Professional experienced and insured arborist
- All tree work including removal / pruning
- Hedge trimming and property maintenance
- Quality firewood and smoker wood

Heath van Leeuwen 0210 838 9922
email Heathsvan@gmail.com

TREE SPECIALIST



- Tree felling & pruning
- Hedge trimming
- Stump grinding
- Fully insured
- Qualified arborist

TREECARE WHANGAMATA LTD
Contact Ben 021 827 355
trecarewhangamata@gmail.com

LAWYERS

USSHER LAWYERS

- SINCE 2007 -

We can help with all of your general legal needs

- Conveyancing if you are buying or selling property
- Sale and purchase of business assets • Commercial leasing
- Relationship property • Trusts • Wills • Enduring powers of attorney

www.ussherlawyers.co.nz | Phone 07 865 8824
We've moved - now at 123 Lindsay Rd, Whangamata

WARDROBES



Steve Parkinson
Central, East & South
021 0733 100
steve@wardrobesdirect.co.nz

ALSO SERVICING WHANGAMATA
www.wardrobesdirect.co.nz

Showroom and office:
175 Marua Rd
Mt Wellington

LAUNDRY

WHANGA LAUNDROMAT



The only locally owned & operated laundromat in town!

OPEN 24 HOURS - 7 DAYS A WEEK
CASEMENT RD, WHANGAMATA (OPPOSITE WAITOMO FUEL)

SCAFFOLDING



- Mobile scaffolding
- Roof edge protection
- Construction scaffold

Servicing Whangamata and surrounding areas

Please ring 022 076 0160 or
email whangamatascaffolding@gmail.com
102 Lindsay Road, Whangamata Est 2014

TYRE & BATTERY SERVICES



WHANGAMATA TYRE & BATTERY

KUMHOTYRES 7

Car tyres / Wheel alignment
4WD tyres / Tyre repair
Wheel balance
Small implement tyres
Batteries - car & marine

Phone Simon 865 7698

CHALLENGE Cnr Port & Ocean Rd, Whangamata
www.challenge.net.nz

WINDOW & DOOR SERVICES



WHANGAMATA WINDOW & DOOR SERVICES

Bryce Hall
M. 027 282 2057
Ph. 865 9714

Reglaze // Repairs // Maintenance
Retro Fit Double Glaze

whangamatawindowdoorservices@extra.co.nz

HOME SERVICES



YourLocal
NZ's Trusted Home Services

Avi@yourlocal.nz • www.yourlocal.nz • 022 534 5478

We specialise in

- Exterior house wash, windows, driveways, patios, decks, fences & roofs - Commercial, residential, rural, new builds & painters prep - Pests treatment (fumigation)
- Rodents & wasps - Chimney sweeping - Roof treatments

BUSINESS FRANCHISE FOR SALE

We cover Coromandel, Thames, Waihi, Waihi Beach, Whitianga, Whangamata

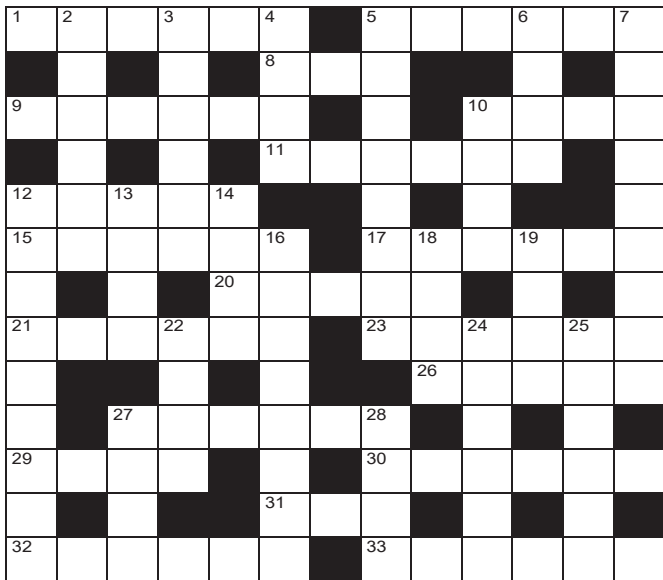
CLOTHING

YUKEYS
3620

Clothing Alterations and Repairs
LADIES - MEN - CHILDRENSWEAR

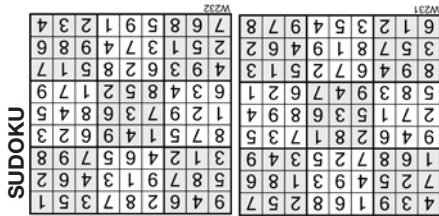
Open Tuesday to Friday 8.30am to 1.30pm
Saturday 9am to 12pm
105 Aickin Road (just off Port Road)
Whangamata
M. 021 0289 3968

QUICK CROSSWORD

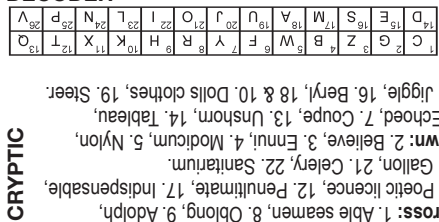


- Across**
- Facet (6)
 - Without skin pigment (6)
 - Marry (3)
 - Like lime or caustic soda (6)
 - Highest point (4)
 - Channel for liquid (6)
 - Police weapon (5)
 - Disconnect (6)
 - Admit formally to a post (6)
 - Wet thoroughly (5)
 - Musical item (6)
 - Truthful and sincere (6)
 - Boldness (5)
 - Boost (6)
 - Smile radiantly (4)
 - Faze (6)
 - Travel over snow (3)
 - A way out (6)
 - Pandemonium (6)
- Down**
- Muslim sovereign (6)
 - Tooth surface (6)
 - Foolish person (4)
 - Reprimand (8)
 - Restless desire (4)
 - Exaggerate (9)
 - Matured (4)
 - Record player (9)
 - Junk email (4)
 - Impolite (4)
 - Lacking sense (8)
 - Lighting gas (4)
 - Exploiter (4)
 - Edge of hat (4)
 - Tidily (6)
 - Slender and elegant (6)
 - Reasonable (4)
 - Prudish (4)

SOLUTIONS

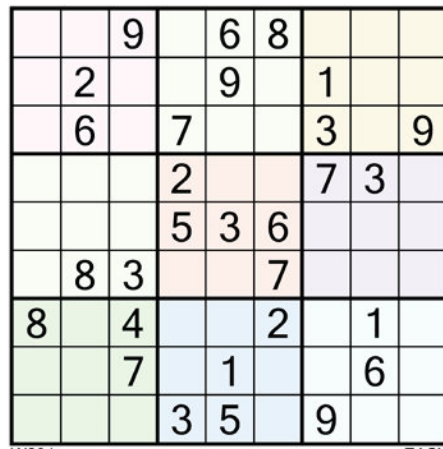


DECODER

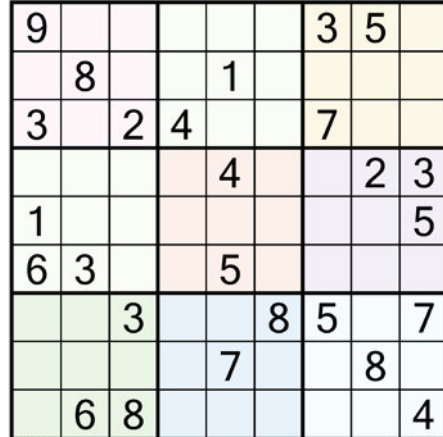


SUDOKU

Fill the grid so every row, column and 3x3 box contains the numbers 1-9



W231 EASY

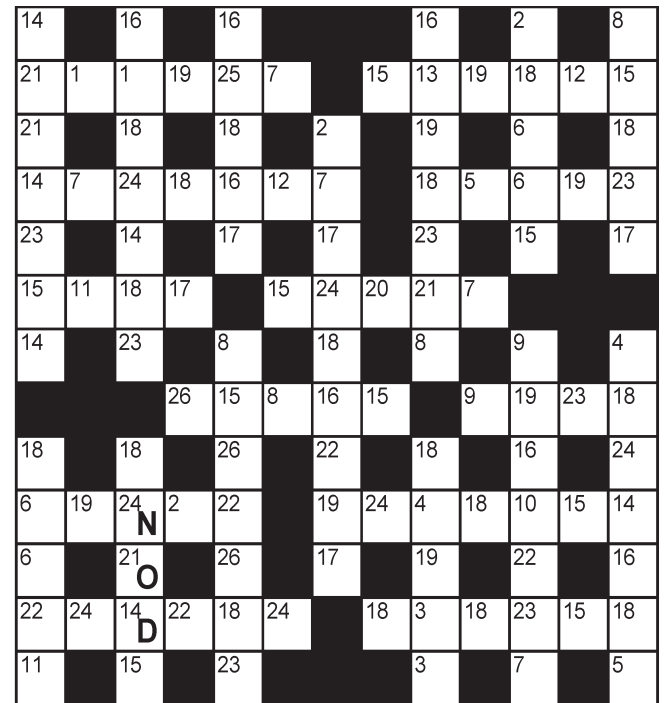


W232 HARDER

All puzzles © The Puzzle Company

DECODER

Each number below represents a different letter. Find the correct letter for each number by working out the word from the letters given. To keep track, cross the letters off on the grid below.

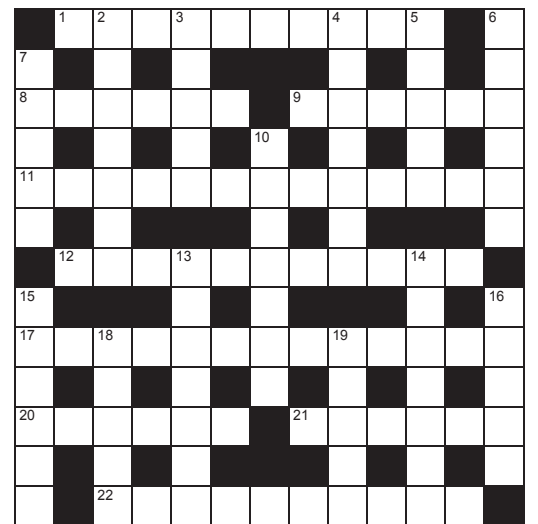


A	B	C	D	E	F	G	H	I	J	K	L	M	N	O	P	Q	R	S	T	U	V	W	X	Y	Z
1	2	3	4	5	6	7	8	9	10	11	12	13													
14	15	16	17	18	19	20	21	22	23	24	25	26													
D								O					N												

CRYPTIC CROSSWORD

- Across**
- Jack can be, by the sound of it (4,6)
 - Plays bongo with student with form (6)
 - Shipload is out – out for the man (6)
 - One Celtic epic may give you the right to take liberties (6,7)
 - Mutilate pen as almost there (11)
 - Vital but unable to be despatched? (13)
 - The measurement of Portugal longitudinally (6)
 - Vegetable garden stick (6)
 - Breakfast brand found in the asylum (10)

- Down**
- No crap perceivable perhaps but know it's the truth (7)
 - The tedium of a godforsaken nuisance (5)
 - A bit of Geronimo Di cumulated in collection (7)
 - Stocking material made from polyvinyl once treated (5)
 - Rang co-ed he corrupted (6)
 - A sports' car plate (5)
 - See 18
 - Sheep is no item for nourishment unfortunately if left in natural state (7)
 - A colourful scene created by gold on furniture (7)
 - Move up and down in the Irish jig Glenda choreographed (6)



- 16.** Latino goes off intolerably with another girl (5)
18 & 10. They are normally found on the barbie (5,7)
19. Manoeuvre the cattle (5)

SMOKY PALLET

FREEHOUSE

\$20 PIZZA & JUG

With live Music

EVERY FRIDAY 4PM-6PM

@Smokypalletwhanga
 @Smokypallet